

FOR LEASE

OAKLAND INDUSTRIAL PARK AKA AFFORDABLE WAREHOUSES

1900-2261 NW 29TH STREET, OAKLAND PARK, FL 33311

1907-1911 NW 29TH STREET



SPACE HIGHLIGHTS

- 5,000 SF
- 970 SF of air-conditioned offices
- Can modify office to suit
- 4,030 SF of warehouse
- 2 front 10' x 12' grade level overhead doors
- 2 rear 10' x 12' grade level overhead doors
- Kitchenette
- LED lighting
- 2 private restrooms
- 16' clear ceiling in warehouse



ANGIE WEAVER

Lauderdale Lakes and Lauderdale Manager
Direct: 954.485.9200 | Cell: 917.645.2339
angie@levyrai.com

HALEY PRESSER

Property Manager / Sales Associate
Direct: 954.485.9200 | Cell: 954.254.5396
Haley@levyrai.com

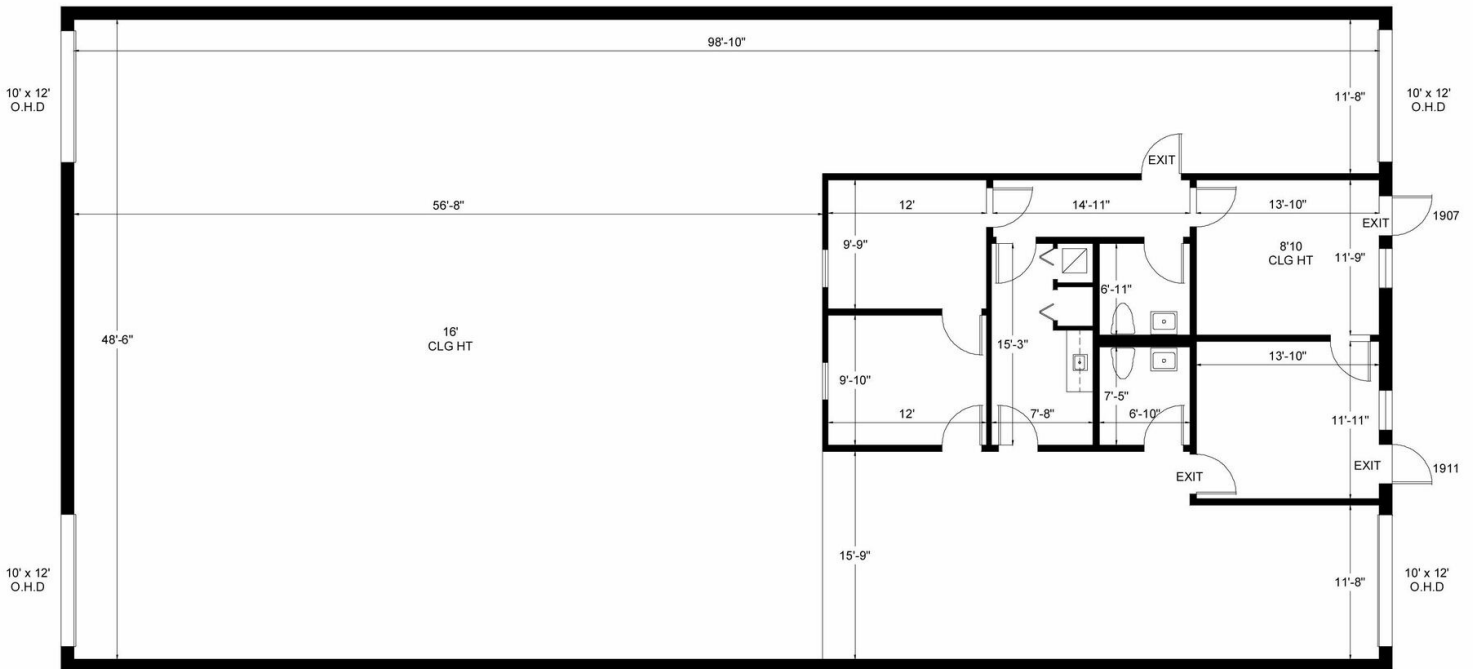


OAKLAND INDUSTRIAL PARK AKA AFFORDABLE WAREHOUSES

1900-2261 NW 29TH STREET, OAKLAND PARK, FL 33311

1907-1911 NW 29TH STREET FLOOR PLAN

1907-1911 NW 29TH ST | OAKLAND PARK, FL 33311



Office - 970 sq.ft.
Warehouse - 4,030 sq.ft.

5,000 Rentable Sq. Ft.
www.LevyRealtyAdvisors.com

ANGIE WEAVER

Lauderdale Lakes and Lauderhill Manager
Direct: 954.485.9200 | Cell: 917.645.2339
angie@levyrai.com

HALEY PRESSER

Property Manager / Sales Associate
Direct: 954.485.9200 | Cell: 954.254.5396
Haley@levyrai.com

