



LAKWOOD PLAZA MARKETPLACE

NWC SPRING ST. & PALO VERDE AVE

2,040 - 42,342 SF

GROCER | FITNESS | MEDICAL | RETAIL | RESTAURANT AVAILABLE

Please Contact

JASON GORDON

310.451.8171 X222
JGORDON@EPSTEEN.COM

BRE LIC: 01139740

VIC MONTALBO

310.451.8171 X230
VMONTALBO@EPSTEEN.COM

BRE LIC: 00927723

JACK AUSTIN

310.451.8171 X221
JAUSTIN@EPSTEEN.COM

BRE LIC: 02217375



PROPERTY DETAILS

- Established community center completely restored
- Highly visible shop spaces available
- Signalized intersection
- Easy street access
- Prominent pylon and monument signage throughout
- Office and Medical influence immediate

● Join:    

DEMOGRAPHICS

Population



Daytime Population



Avg. Household Income



	Population	Daytime Population	Avg. Household Income
1 MILE	19,415	5,159	\$174,634
2 MILE	66,435	19,708	\$175,408
3 MILE	170,376	75,058	\$164,268

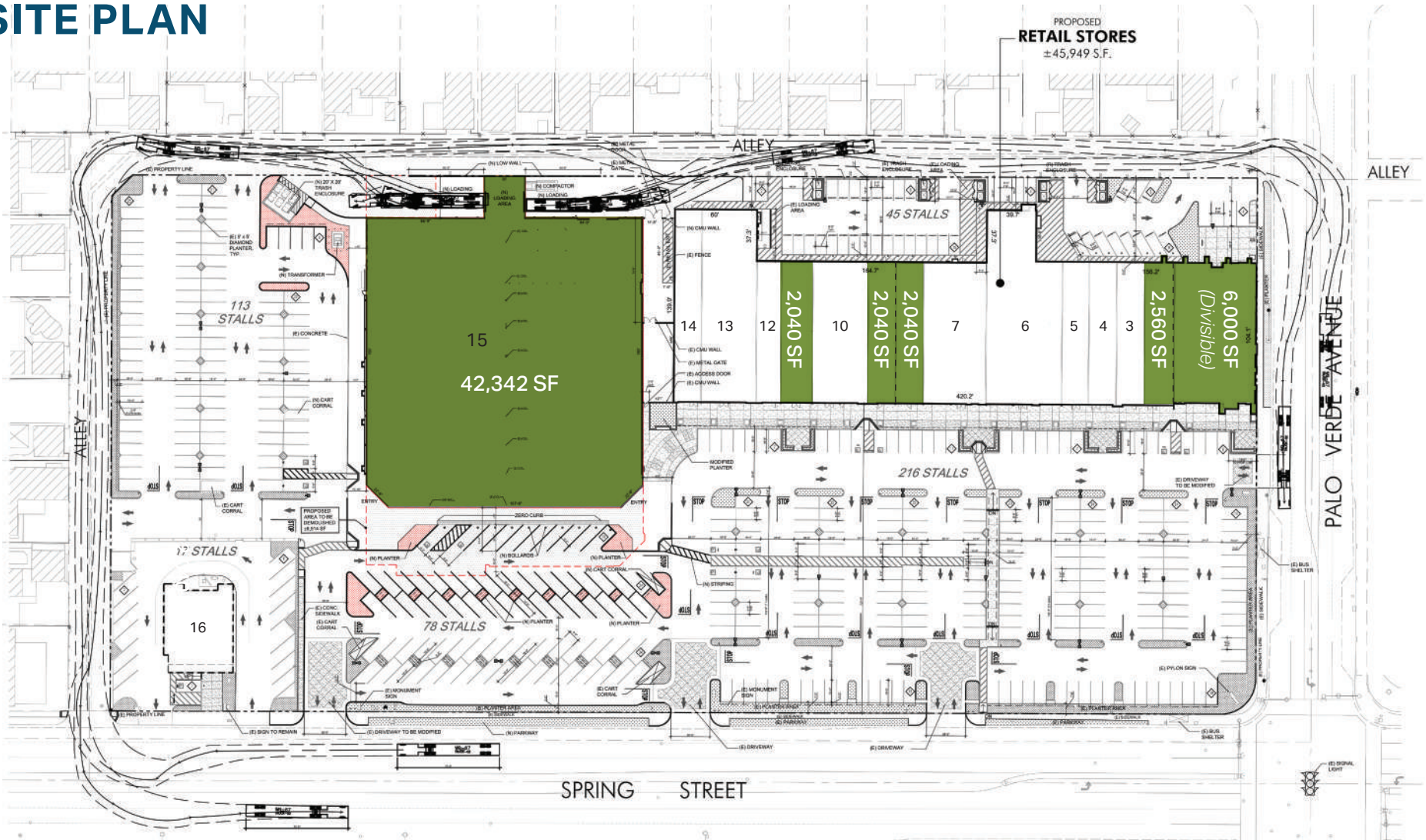
TRAFFIC COUNTS

SPRING ST	31,447 CPD
PALOS VERDES AVE	17,853 CPD

 **WALK SCORE**
78



SITE PLAN



- | | |
|--------------------------------|--|
| 1. Available 6,000 SF | 10. Grounds Coffee & Bakery 4,080 SF |
| 2. Available 2,560 SF | 11. Available 2,040 SF <i>Restaurant Ready Space</i> |
| 3. Subway 1,520 SF | 12. Bamboo Nails 2,040 SF |
| 4-5. Pacific Dental 2,040 SF | 13. Vitamin City 6,400 SF |
| 6. Anytime Fitness 6,509SF | 14. H&R Block 2,000 SF |
| 7. Petco Unleashed 4,640 SF | 15. Available (Amazon Fresh) 42,342 SF |
| 8. Available 2,040 SF | 16. John's Hamburger 1,738 SF |
| 9. Available 2,040 SF | |

SHOPPING CENTER GLA:

90,029 SF

**Note: Total GLA Doesn't Include Outdoor Dining Patio*

2-MILE RETAIL AERIAL



This information is deemed reliable, but not guaranteed. All information should be independently verified for its accuracy and completeness before relying upon it.