

# For lease

## Pre-Built Medical Office Space



### Property specifications

Available size	13,190 SF
Possession	Immediate
Rental rate	Upon request
Building features	<ul style="list-style-type: none"><li>• Pre-built medical office space</li><li>• Space includes large reception &amp; waiting area, 15 exam rooms, physician offices, multiple ADA bathrooms, and a conference room</li><li>• Property offers monument building signage and great visibility</li><li>• Abundant parking</li></ul>
Location	<ul style="list-style-type: none"><li>• Prime location in Woodbury medical/office park</li><li>• Easily accessible from the Long Island Expressway, Northern State Pkwy and Route 135</li><li>• Close proximity to major hospitals</li><li>• Close proximity to Syosset LIRR Station</li></ul>

### 205 Froehlich Farm Blvd Woodbury, NY

---

#### Ray Ruiz

Managing Director

+1 631 962 2890

[ray.ruiz@jll.com](mailto:ray.ruiz@jll.com)

#### John A. Nielsen

Vice President

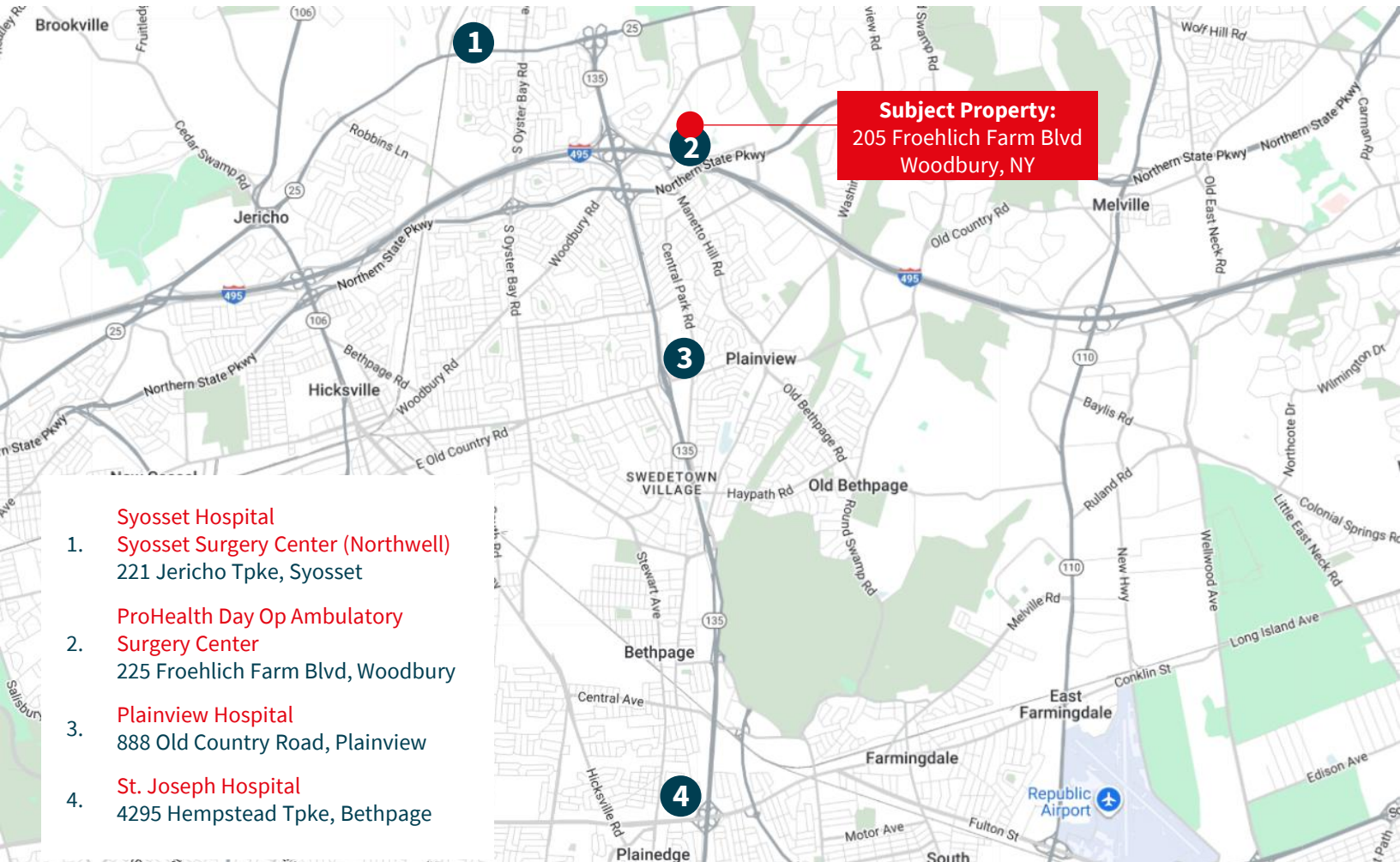
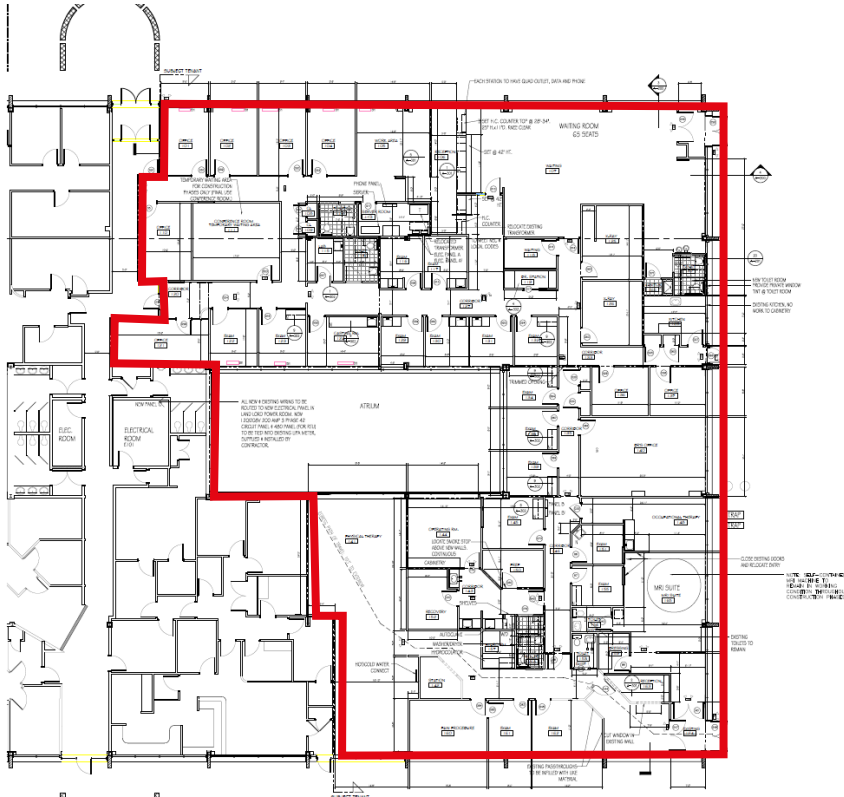
+1 631 962 7382

[johna.nielsen@jll.com](mailto:johna.nielsen@jll.com)

---

# Floor plan

13,190 SF



**Subject Property:**  
205 Froehlich Farm Blvd  
Woodbury, NY

- 1. **Syosset Hospital**  
**Syosset Surgery Center (Northwell)**  
221 Jericho Tpke, Syosset
- 2. **ProHealth Day Op Ambulatory**  
**Surgery Center**  
225 Froehlich Farm Blvd, Woodbury
- 3. **Plainview Hospital**  
888 Old Country Road, Plainview
- 4. **St. Joseph Hospital**  
4295 Hempstead Tpke, Bethpage