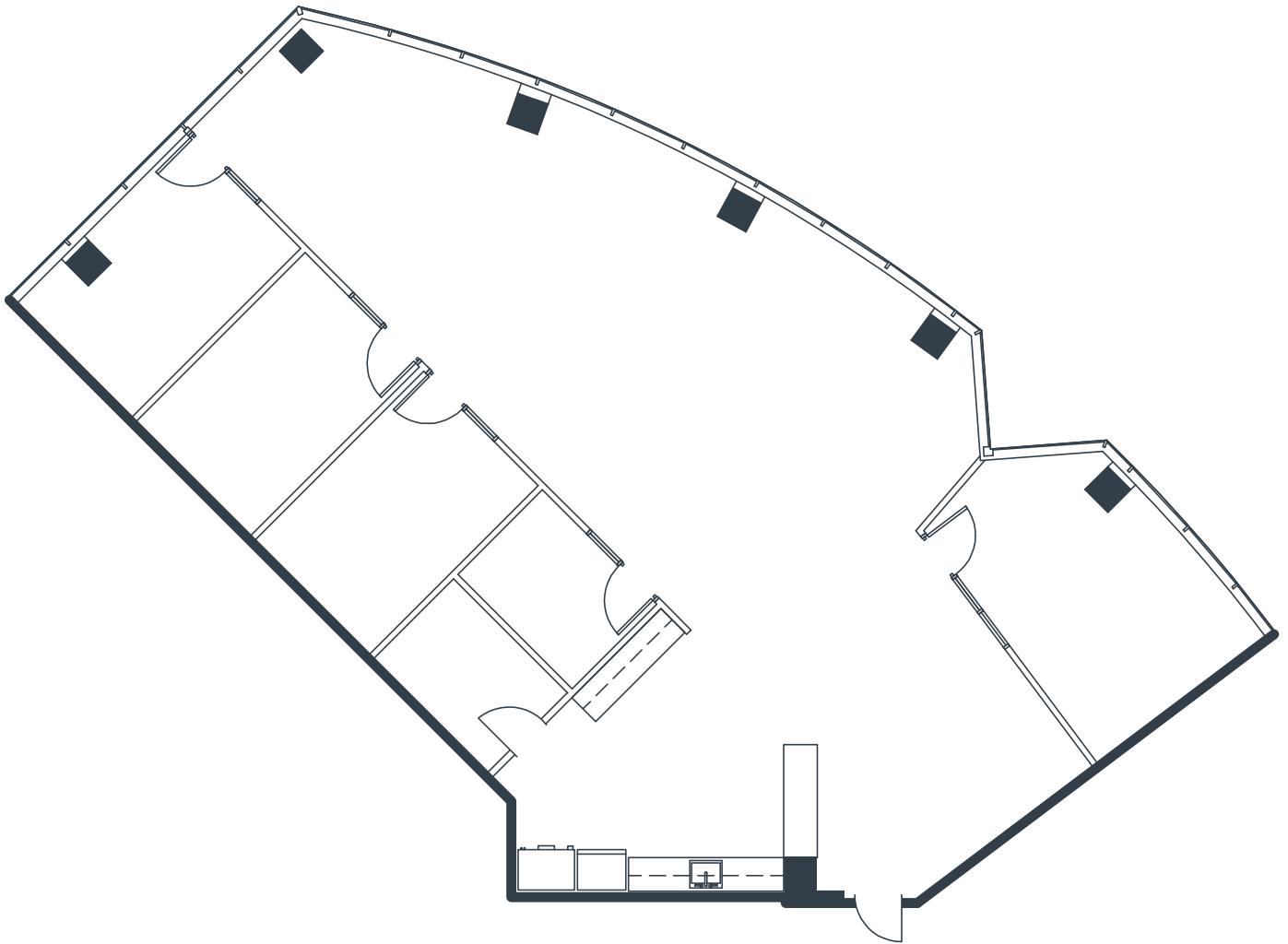


# CENTURY CENTRE

2601 Main Street, Suite 660  
Irvine, CA

2,839 Square Feet  
Call for Pricing  
Full Service Gross



## NOTES

- Reception
- Window Office
- 3 Interior Offices
- Conference Room
- Kitchen
- Server Room
- Large Open Work Area
- Part of a Professionally Managed Business Park

Created by Olen Commercial Realty Corp., 2022.  
Information is not to be published or copied without  
written approval. Square footage and floor plans are  
estimates and should be separately verified. All rates,  
terms, floor plans, and building facts are subject to  
change without notice.

ea 03.27.2026

## MARIA MEYER

Senior Leasing Director  
949.719.7215  
mmeyer@olen.com



Seven Corporate Plaza  
Newport Beach, CA  
949.644.6536  
www.olen.com