

# 7,500 SF

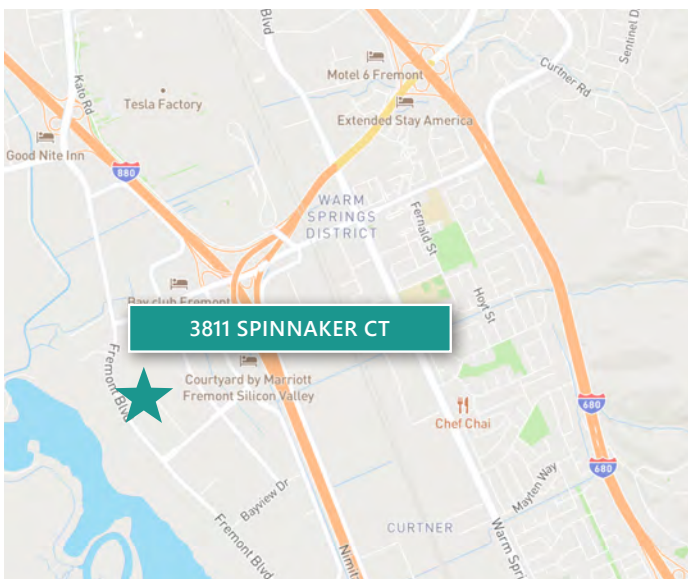
Class A R&D Space For Lease



## Prologis Park Bayside



3811 Spinnaker Ct  
Fremont, CA 94538 USA



### FACILITY

- 1,520 SF Office
- 17' Clear Height
- Mix of Office/Lab/Warehouse
- Corner Unit
- Two Docks and One Grade Level Loading
- Available Q2 2024
- 200 Amps @ 277/480V

### LOCATION

- Located in the desirable Bayside area of Fremont
- Easy access to I-880, I-680 & Hwy 237
- Minutes from the new Warm Springs BART Station

### ADVANTAGES & AMENITIES

- Great park amenities - Bay Club Fitness Center, Hotels, Restaurants, walking/biking trails and more
- Expansion opportunities within the 1.3M SF park

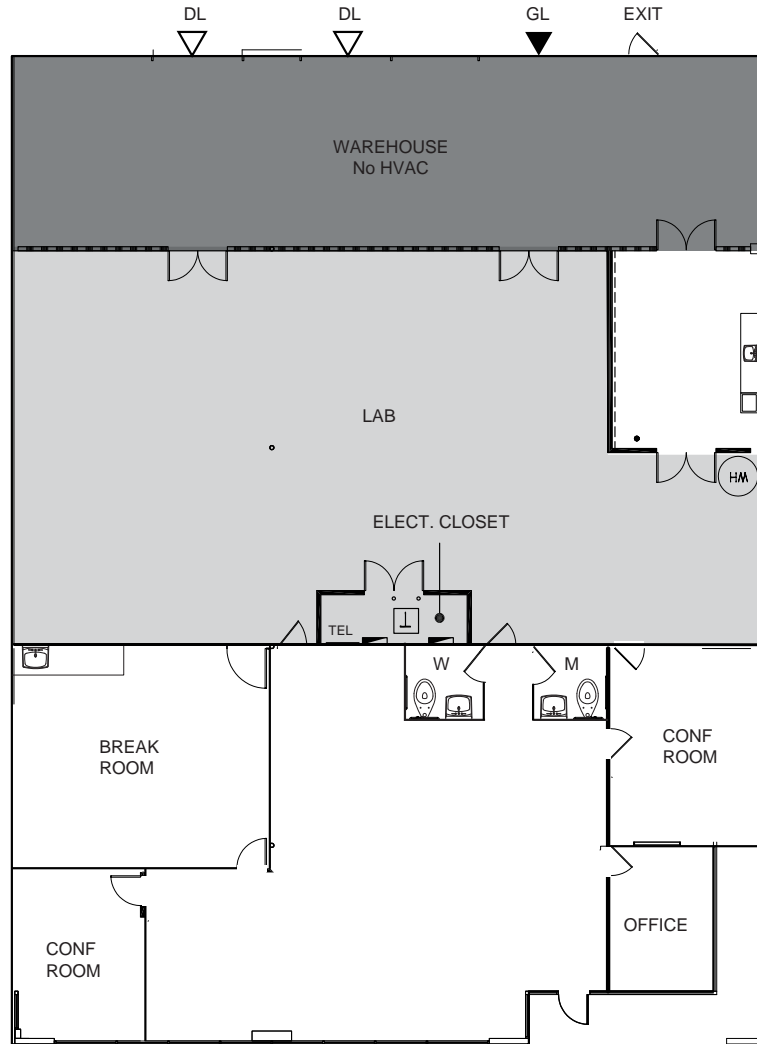
Your single-source service for efficient move-in and operations: [prologisessentials.com](https://www.prologisessentials.com)

# 7,500 SF

Class A R&D Space For Lease



## Prologis Park Bayside



- ▼ GRADE LEVEL DOOR
  - ▽ DOCK HIGH DOOR
  - CONCRETE/OPEN CEILING
  - CONCRETE/DROP CEILING
- NOT TO SCALE

## CBRE

**Thomas Taylor**  
thomas.taylor@cbre.com  
ph +1 408 453 7417  
Lic. 00944083  
225 W Santa Clara St  
12th Floor  
San Jose, CA 95113 USA

**Sherman Chan**  
sherman.chan@cbre.com  
ph +1 408 453 7488  
Lic. 01046769  
225 W Santa Clara St  
12th Floor  
San Jose, CA 95113 USA

**Vince Machado**  
vince.machado@cbre.com  
ph +1 408 453 7411  
Lic. 01317553  
225 W Santa Clara St  
12th Floor  
San Jose, CA 95113 USA

**Matthew Taylor**  
matthew.taylor@cbre.com  
ph +1 408 453 7469  
Lic. 01897355  
225 W Santa Clara St  
12th Floor  
San Jose, CA 95113 USA

**Prologis**  
Kari Paige  
kpaige@prologis.com  
ph +1 510 661 4075  
680 N. McCarthy Blvd  
Suite 100  
Milpitas, CA 95035 USA

© 2024 CBRE, Inc. All rights reserved. This information has been obtained from sources believed reliable but has not been verified for accuracy or completeness. CBRE, Inc. makes no guarantee, representation or warranty and accepts no responsibility or liability as to the accuracy, completeness, or reliability of the information contained herein. You should conduct a careful, independent investigation of the property and verify all information. Any reliance on this information is solely at your own risk. CBRE and the CBRE logo are service marks of CBRE, Inc. All other marks displayed on this document are the property of their respective owners, and the use of such marks does not imply any affiliation with or endorsement of CBRE. Photos herein are the property of their respective owners. Use of these images without the express written consent of the owner is prohibited.

No warranty or representation, expressed or implied, is made as to the accuracy of the information contained herein, and same is submitted subject to error and omissions.

# 7,500 SF

Class A R&D Space For Lease



## Prologis Park Bayside



## CBRE

**Thomas Taylor**  
thomas.taylor@cbre.com  
ph +1 408 453 7417  
Lic. 00944083  
225 W Santa Clara St  
12th Floor  
San Jose, CA 95113 USA

**Sherman Chan**  
sherman.chan@cbre.com  
ph +1 408 453 7488  
Lic. 01046769  
225 W Santa Clara St  
12th Floor  
San Jose, CA 95113 USA

**Vince Machado**  
vince.machado@cbre.com  
ph +1 408 453 7411  
Lic. 01317553  
225 W Santa Clara St  
12th Floor  
San Jose, CA 95113 USA

**Matthew Taylor**  
matthew.taylor@cbre.com  
ph +1 408 453 7469  
Lic. 01897355  
225 W Santa Clara St  
12th Floor  
San Jose, CA 95113 USA

**Prologis**  
Kari Paige  
kpaige@prologis.com  
ph +1 510 661 4075  
680 N. McCarthy Blvd  
Suite 100  
Milpitas, CA 95035 USA

© 2024 CBRE, Inc. All rights reserved. This information has been obtained from sources believed reliable but has not been verified for accuracy or completeness. CBRE, Inc. makes no guarantee, representation or warranty and accepts no responsibility or liability as to the accuracy, completeness, or reliability of the information contained herein. You should conduct a careful, independent investigation of the property and verify all information. Any reliance on this information is solely at your own risk. CBRE and the CBRE logo are service marks of CBRE, Inc. All other marks displayed on this document are the property of their respective owners, and the use of such marks does not imply any affiliation with or endorsement of CBRE. Photos herein are the property of their respective owners. Use of these images without the express written consent of the owner is prohibited.

No warranty or representation, expressed or implied, is made as to the accuracy of the information contained herein, and same is submitted subject to error and omissions.

# 7,500 SF

## Class A R&D Space For Lease



### Prologis Park Bayside - Amenities, BART and more



## CBRE

Thomas Taylor  
thomas.taylor@cbre.com  
ph +1 408 453 7417  
Lic. 00944083  
225 W Santa Clara St  
12th Floor  
San Jose, CA 95113 USA

Sherman Chan  
sherman.chan@cbre.com  
ph +1 408 453 7488  
Lic. 01046769  
225 W Santa Clara St  
12th Floor  
San Jose, CA 95113 USA

Vince Machado  
vince.machado@cbre.com  
ph +1 408 453 7411  
Lic. 01317553  
225 W Santa Clara St  
12th Floor  
San Jose, CA 95113 USA

Matthew Taylor  
matthew.taylor@cbre.com  
ph +1 408 453 7469  
Lic. 01897355  
225 W Santa Clara St  
12th Floor  
San Jose, CA 95113 USA

Prologis  
Kari Paige  
kpaige@prologis.com  
ph +1 510 661 4075  
680 N. McCarthy Blvd  
Suite 100  
Milpitas, CA 95035 USA

© 2024 CBRE, Inc. All rights reserved. This information has been obtained from sources believed reliable but has not been verified for accuracy or completeness. CBRE, Inc. makes no guarantee, representation or warranty and accepts no responsibility or liability as to the accuracy, completeness, or reliability of the information contained herein. You should conduct a careful, independent investigation of the property and verify all information. Any reliance on this information is solely at your own risk. CBRE and the CBRE logo are service marks of CBRE, Inc. All other marks displayed on this document are the property of their respective owners, and the use of such marks does not imply any affiliation with or endorsement of CBRE. Photos herein are the property of their respective owners. Use of these images without the express written consent of the owner is prohibited.

No warranty or representation, expressed or implied, is made as to the accuracy of the information contained herein, and same is submitted subject to error and omissions.

# GO BEYOND THE BUILDING

**Prologis Essentials** is the single source for warehouse solutions to keep facilities running at a high level of efficiency. Our offerings are easy and convenient to procure and implement, providing support for move-in, moving forward, and growing any business.

## MATERIAL HANDLING

- A. Racking & Shelving
  - I. Layout and Design
  - II. New and Used Material
  - III. Permitting Services
  - IV. Buybacks and Liquidations
- B. Forklifts
  - I. Electric and Propane
  - II. New, Used, and Refurbished
  - III. Rentals
  - IV. Service



## ENERGY

- A. Solar
- B. LED Lighting
- C. EV Charging
- D. Generators



## AUTOMATION/ ADVANCED SOLUTIONS

- A. Conveyor and Sortation
- B. Locus Robotics
- C. VLMs, Shuttles, Carousels, AS/RS
- D. Pick Modules/Mezzanine



## SMART BUILDING

- A. Fiber Backbone
- B. Network and Cabling
- C. Internet Service
- D. Access Points
- E. Security Cameras and Monitoring Services
- F. Badge Access and Control
- G. Barcode Scanning



## PRODUCTS AND SERVICES

- A. Moving and Relocation Services
- B. HVLS Fans
- C. Office Furniture
- D. In-Plant Modular Offices
- E. Yard Ramps
- F. Janitorial Service
- G. Pest Control



**John Kenley**  
Essentials Solutions Manager  
jkenley@prologis.com  
415-733-9402

 **PROLOGIS<sup>®</sup>**  
ESSENTIALS  
[www.prologisessentials.com](http://www.prologisessentials.com)