



Sublease Available

1730 Rhode Island Avenue, NW

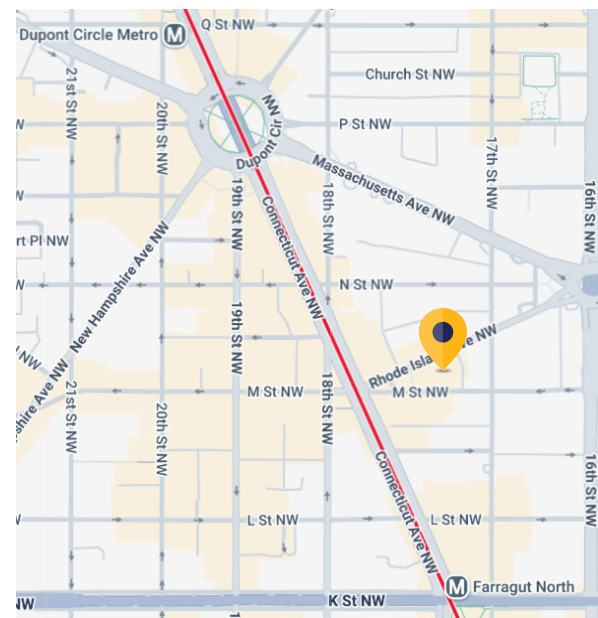
Washington, DC 20036

Overview

Premises:	8th Floor: 1,750 rentable square feet
Rental Rate:	\$35.00/SF, Full Service
Availability:	Immediate
Term:	Through August 31, 2030
Parking:	Yes, in Building Garage
Submarket:	CBD

Space Features & Building Amenities

- 2 offices and the rest open
- Built out as classroom space
- Furniture can be available
- Exposed ceilings
- Building Amenities: Fitness Center and Conference Center



For More Information

Cresa

1800 M Street, NW
 Suite 300N
 Washington, DC 20036
cresa.com/washingtondc



Josh Freedenberg
 301.538.0939
jfreedenberg@cresa.com

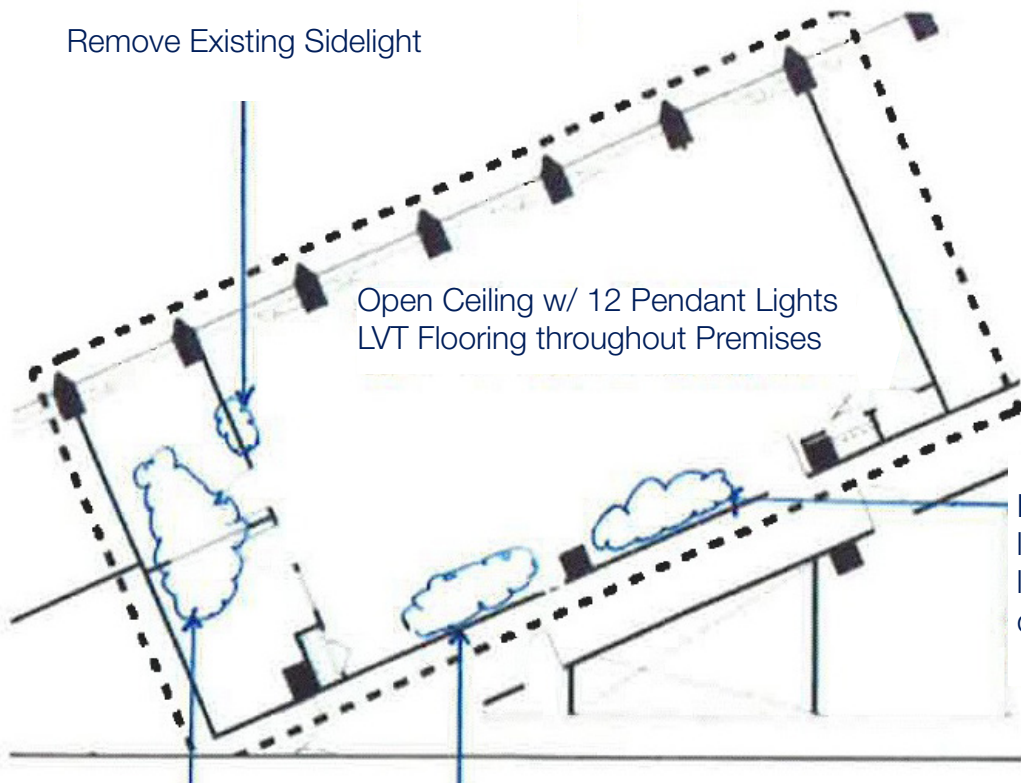
Sublease Available



1730 Rhode Island Avenue, NW

Washington, DC 20036

Floor Plan



For More Information

Cresa
1800 M Street, NW
Suite 300N
Washington, DC 20036
cresa.com/washingtondc



Josh Freedenberg
301.538.0939
jfreenberg@cresa.com