

SUNPORT COMMERCE CENTER III

404 SUNPORT LANE, ORLANDO, FL 32809



CONVENIENT ACCESS
TO SR 528 AND FLORIDA'S TURNPIKE

33,000 SF AVAILABLE
SUITE 150

SPACE HIGHLIGHTS

ASKING RATE
\$12.50/SF NNN

OPEX*
\$3.07 PSF

MONTHLY RATE
\$42,817.50

WAREHOUSE SIZE
25,352 SF

OFFICE SIZE
7,648 SF

CLEAR HEIGHT
24'

FIRE SUPPRESSION
CLASS IV

ZONING
IND-4

PARKING RATIO
2.00/1,000

LOADING DOORS
(10) DOCK DOORS
(2) PIT LEVELERS
(2) DRIVE-INS

YEAR BUILT
2004

AVAILABILITY
SEPTEMBER 2026

**Denotes Estimated Operating Expenses for 2026*

CONTACT INFORMATION

TAYLOR ZAMBITO
Senior Director
+1 407 541 4409
taylor.zambito@cushwake.com

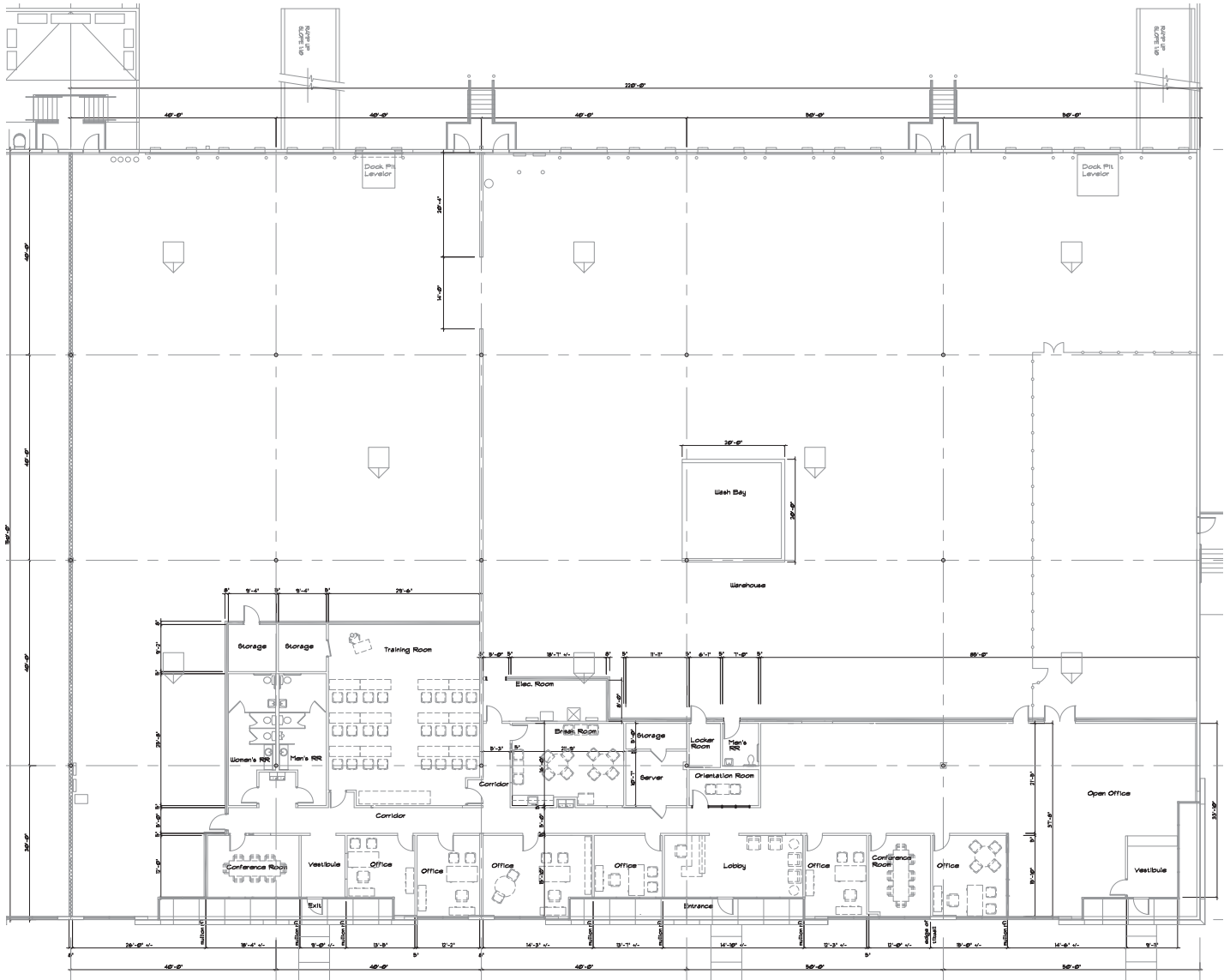
RYAN HUBBARD
Director
+1 407 541 4390
ryan.hubbard@cushwake.com



©2026 Cushman & Wakefield. All rights reserved. The information contained in this communication is strictly confidential. This information has been obtained from sources believed to be reliable but has not been verified. No warranty or representation, express or implied, is made as to the condition of the property (or properties) referenced herein or as to the accuracy or completeness of the information contained herein, and same is submitted subject to errors, omissions, change of price, rental or other conditions, withdrawal without notice, and to any special listing conditions imposed by the property owner(s). Any projections, opinions or estimates are subject to uncertainty and do not signify current or future property performance.

FLOOR PLAN

SUITE 150



CONTACT INFORMATION

TAYLOR ZAMBITO
Senior Director
+1 407 541 4409
taylor.zambito@cushwake.com

RYAN HUBBARD
Director
+1 407 541 4390
ryan.hubbard@cushwake.com

