

**FOR  
LEASE**

Available:  
2,045 - 4,395 SF

## PROPERTY OVERVIEW

The Williams Mullen Center is a 207,000 SF high rise office building in a premier location on the southeastern edge of Richmond's Central Business District at the corner of 10th and Canal Streets. The center is home to one of the region's most prominent law firms and also includes several other professional corporations. The property is an easy walk from hotels, shops, residential buildings, restaurants, the James River Park System and Canal Walk.

## DEMOGRAPHICS

	1 MILE	3 MILES	5 MILES
<b>Households:</b>	20,064	133,391	260,892
<b>Population:</b>	10,303	57,617	111,403
<b>Avg HH Income:</b>	\$65,145	\$69,441	\$73,562

## PROPERTY HIGHLIGHTS

- Restaurant space - 2,350 SF restaurant space (can be expanded to 4,395 SF)
- 2,045 SF seeking full-service restaurants, fitness, and service users
- Adjacent to Chopt Creative Salad, and Potbelly Sandwich Shop, Starbucks, and Chick-fil-A (coming soon)
- Residential buildings within walking distance (1,218 units total)
- Street and garage parking available
- Great location, direct access on/off I-195 and I-95

FOR FURTHER INFORMATION, PLEASE CONTACT:

**LORETTA CATALDI** • [loretta.cataldi@divaris.com](mailto:loretta.cataldi@divaris.com) • 804.335.0232

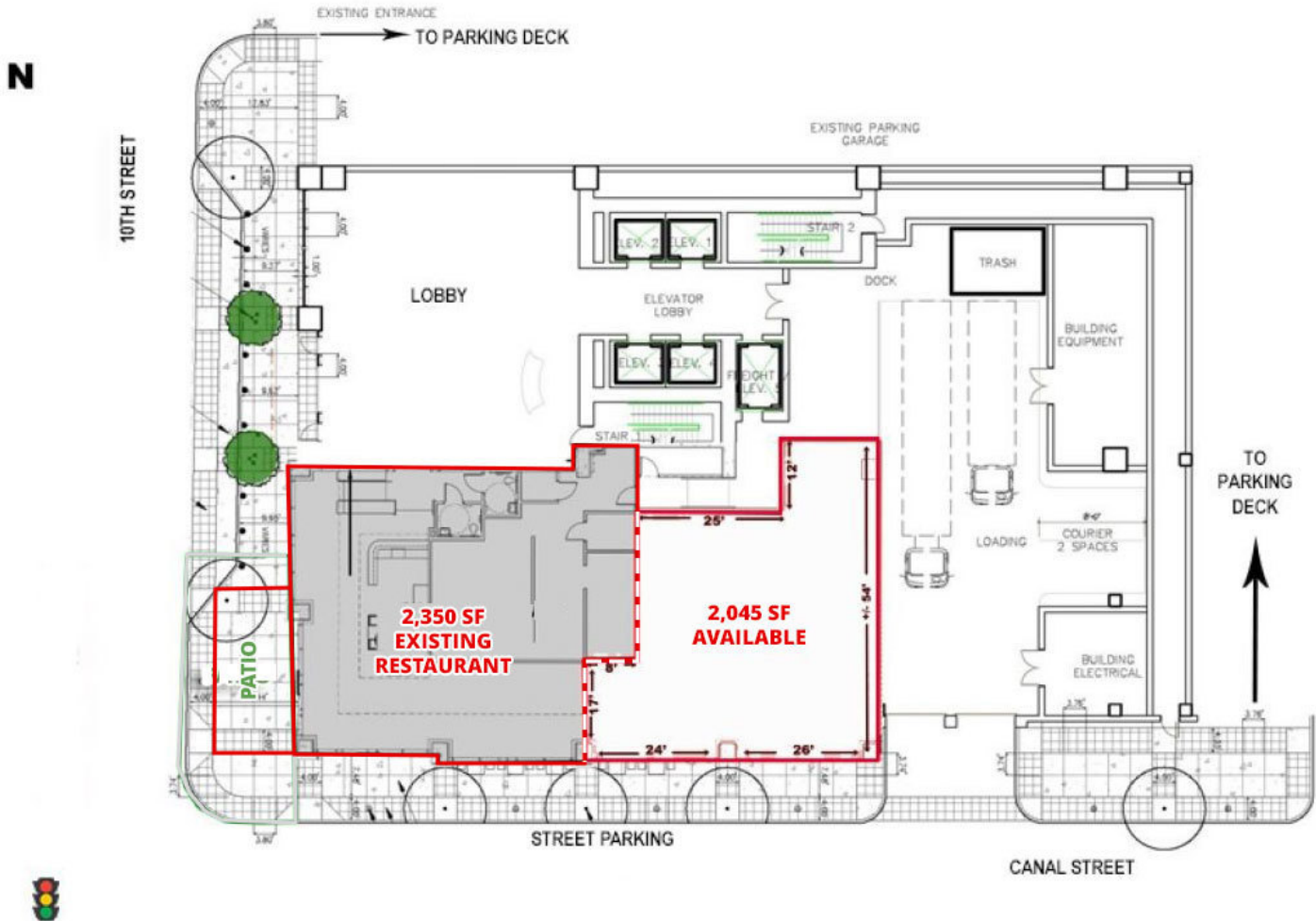
**SARA GOODALL** • [sgoodall@divaris.com](mailto:sgoodall@divaris.com) • 804.977.2110



# WILLIAMS MULLEN

200 SOUTH 10TH STREET , RICHMOND, VA 23219

SPACE PLAN



FOR FURTHER INFORMATION, PLEASE CONTACT:

**LORETTA CATALDI** • [loretta.cataldi@divaris.com](mailto:loretta.cataldi@divaris.com) • 804.335.0232  
**SARA GOODALL** • [sgoodall@divaris.com](mailto:sgoodall@divaris.com) • 804.977.2110



200 South 10th Street | Suite 1010 | Richmond, VA 23219 | [www.divaris.com](http://www.divaris.com)

# WILLIAMS MULLEN

200 SOUTH 10TH STREET , RICHMOND, VA 23219

CBD AREA



FOR FURTHER INFORMATION, PLEASE CONTACT:  
LORETTA CATALDI • loretta.cataldi@divaris.com • 804.335.0232  
SARA GOODALL • sgoodall@divaris.com • 804.977.2110



200 South 10th Street | Suite 1010 | Richmond, VA 23219 | www.divaris.com

# WILLIAMS MULLEN

200 SOUTH 10TH STREET , RICHMOND, VA 23219

## LOCAL AREA



### RESTAURANTS

- 1 Capital Ale House
- 2 The Tobacco Company
- 3 Capitol Waffle Shop
- 4 Sefton Coffee Company
- 5 Dunkin Donuts
- 6 521 Biscuits & Waffles
- 7 Chopt Creative Salad Co
- 8 La Grotta Ristorante
- 9 Penny Lane Pub
- 10 Perly's
- 11 Tarrants Cafe
- 12 Spice of India
- 13 Hotel Greene
- 14 Potbelly
- 15 Gather & Hem Bar
- 16 Starbucks
- 17 Fall Line Kitchen & Bar
- 18 Delta Hotel
- 19 Pit and Peel
- 20 Rueger's
- 21 Sam Millers
- 22 Marriot Hotel
- 23 Charlotte's Southern Deli & Tapas
- 24 Casa Del Barco
- 25 Sine Irish Pub
- 26 The Hard Shell

### OFFICE/GOVT BUILDINGS

- 1 VA State Capitol
- 2 GRCC
- 3 US Court of Appeals
- 4 VA Dept of Social Services
- 5 Procurement Govt office
- 6 VA Executive Mansion
- 7 MCV Campus (VCU)
- 8 VCU Hospital
- 9 VCU Dept of Pediatrics
- 10 Library of VA
- 11 USDC Eastern District of VA
- 13 State Corporation Commission
- 14 The Federal Reserve
- 15 Supreme Court of VA
- 16 Main Street Station
- 17 McGuire Woods
- 18 Towne Bank
- 19 IRS
- 20 Dominion
- 21 Dominion Energy Center
- 22 CoStar
- 23 Altria Center for Research & Tech.

200 SOUTH  
10TH STREET

FOR FURTHER INFORMATION, PLEASE CONTACT:

LORETTA CATALDI • [loretta.cataldi@divaris.com](mailto:loretta.cataldi@divaris.com) • 804.335.0232

SARA GOODALL • [sgoodall@divaris.com](mailto:sgoodall@divaris.com) • 804.977.2110

