

BUILDING CODE SUMMARY:
 MUNICIPAL ADDRESS:
 UNIT #210, 151 SKYVIEW BAY NE,
 CALGARY AB
 LEGAL DESCRIPTION:
 LOT 5, BLOCK 38, PLAN 1712392
 CURRENT ZONING: DIRECT CONTROL -
 44DC2020
 MAJOR OCCUPANCY: GROUP D
 PROPOSED OCCUPANCY: GROUP D -
 MEDICAL OFFICE
 TYPE OF CONSTRUCTION:
 NON-RESIDENTIAL CONSTRUCTION
 3.3.2.81 GROUP D, UP TO 3 STOREYS
 (SPRINKLERED / FIRE ALARM PROVIDED)
 OCCUPANT LOAD:
 295 PERSONS
 NUMBER OF WATER CLOSETS 3.7.2.2A
 MIN NUMBER OF WATER CLOSETS
 1 MALE, 1 FEMALES UP TO A MAX OF 50
 OCCUPANTS
 PROVIDED: 3 WASHROOMS TOTAL, 1
 BARRIER FREE
 MINIMUM NUMBER OF EXITS: 3.4.2.1
 3 EXITS
 MAX TRAVEL DISTANCE: 3.4.2.4 (2)
 40M

GENERAL NOTES:
 1. DO NOT SCALE DRAWINGS
 2. ALL DIMENSIONS ARE TO FACE OF STUD
 3. ALL INTERIOR PARTITIONS HEIGHTS ARE
 AT 10'-0". ALL JOINTS ARE TO BE TAPED,
 SANDED AND PRIMED, UNLESS
 OTHERWISE NOTED
 4. FIRE RATED WALLS TO USE OF
 STRUCTURE CALK PERIMETER OF
 SUBSTRATES FOR A SMOKE / ACOUSTIC
 SEAL S1C 51
 5. ALL INTERIOR DOORS ARE 7'-0" HEIGHT
 AND SIZE AS NOTED ON THE PLANS AND
 DOOR SCHEDULE
 6. GO TO PROVIDE PLYWOOD BACKING FOR
 WALL MOUNTED EQUIPMENT AND
 MILLWORK I.E. (GRAB BARS, WALL
 MOUNTED SINKS, CHANGE TABLES ECT.)
 7. GO TO SITE VERIFY ALL SITE
 DIMENSIONS
 8. GO TO SCAN & CONFIRM ALL CORING
 FOR PLUMBING AND COORDINATE WITH
 THE LANDLORD PRIOR TO DRILLING OR
 CORING ON SITE
 9. GENERAL CONTRACTOR TO COMPLY
 WITH THE CURRENT ALBERTA BUILDING
 CODE AND TO ALL RELATED
 DOCUMENTS, BY-LAWS, RULES AND
 REGULATIONS

SYMBOL LEGEND:

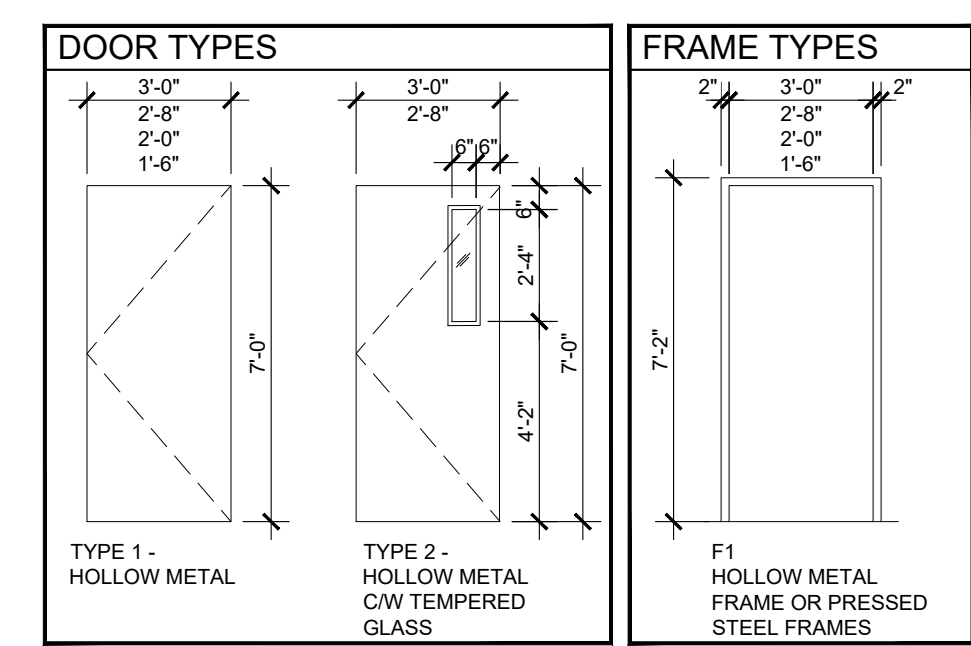
- EXISTING WALLS
- NEW PARTITION WALL
- NEW PLUMBING WALL
- FIRE RATED PARTITION WALL
- 2X4 T-BAR
- DOOR NUMBER
- GLAZING TAG
- CEILING HEIGHT TAG
- PARTITION TYPE
- ROOM NAME
- ROOM NUMBER

PARTITION TYPES:

- (P1)** NON RATED INTERIOR PARTITION
 - 1/2" GYPSUM WALL BOARD
 - 3 1/2" STEEL STUD @ 24" O.C
 - 1/2" GYPSUM WALL BOARD
- (P2)** NON RATED FURRING WALL
 - 3 1/2" STEEL STUD @ 24" O.C
 - 1/2" GYPSUM WALL BOARD
- (P3)** NON RATED FURRING CHANNEL
 - 1 1/2" STEEL FURRING CHANNELS
 - 1/2" GYPSUM WALL BOARD
- (P4)** 1 HR FIRE RATED PARTITION
 - 5/8" TYPE X GYP. WALL BOARD
 - 2X4 WOOD STUDS @ 16" O.C
 - 5/8" TYPE X GYP. WALL BOARD

ELECTRICAL LEGEND:

- 1. LIGHT SWITCHES/CONTROLS TO BE MOUNTED AT 48" AFF TO CENTER OF CONTROL
- 2. GO TO APPLY FOR ELECTRICAL PERMITS
- 3. REFER TO ELECTRICAL DRAWINGS
- NEW EXIT SIGN W/ EMERGENCY LIGHTS & BACKUP BATTERY
- NEW DIRECTIONAL EXIT SIGN
- EXISTING EMERGENCY LIGHT & BACKUP BATTERY
- EXISTING ELECTRICAL PANEL
- NEW SMOKE/ CARBON MONOXIDE DETECTOR
- NEW FIRE EXTINGUISHER
- EXISTING REMOTE LIGHTING HEAD



LEGEND

HM	HOLLOW METAL
TG	TEMPERED GLASS
PT	PAINT
PSF	PRESSED STEEL FRAME

HARDWARE

GROUP #	FUNCTION:
GROUP 1	SATIN NICKEL PASSAGE FUNCTION (1 PASSAGE LEVER SET, 1 1/2 PAIR BUTT HINGES, 1 DOOR STOP, NEOPRENE SOUND GASKET IF REQUIRED)
GROUP 2	SATIN NICKEL ENTRY DOOR FUNCTION (1 LOCKSET CW LEVERS, 1 1/2 PAIR BUTT HINGES, 1 DOOR STOP, NEOPRENE SOUND GASKET IF REQUIRED)
GROUP 3	SATIN NICKEL PRIVACY DOOR FUNCTION (1 LOCKSET CW LEVERS, 1 1/2 PAIR BUTT HINGES, 1 DOOR STOP)

DOOR SCHEDULE

DOOR NO.	DESCRIPTION	DOORS	FRAME	HARDWARE	FIRE RATED	COMMENTS
D101A	2 36"x84"x1 3/4"	HM PT	TG PSF PT	F1 2	-	
D101B	2 36"x84"x1 3/4"	HM PT	TG PSF PT	F1 1	-	
D102A	2 32"x84"x1 3/4"	HM PT	TG PSF PT	F1 1	-	
D102B	2 32"x84"x1 3/4"	HM PT	TG PSF PT	F1 1	-	
D103A	1 32"x84"x1 3/4"	HM PT	-	PSF PT	F1 3	
D103B	1 32"x84"x1 3/4"	HM PT	-	PSF PT	F1 1	
D104	2 32"x84"x1 3/4"	HM PT	TG PSF PT	F1 2	-	
D105	1 32"x84"x1 3/4"	HM PT	-	PSF PT	F1 3	
D106	2 32"x84"x1 3/4"	HM PT	TG PSF PT	F1 1	-	
D107	2 32"x84"x1 3/4"	HM PT	TG PSF PT	F1 2	-	
D108	1 24"x84"x1 3/4"	HM PT	-	PSF PT	F1 2	
D109	1 24"x84"x1 3/4"	HM PT	-	PSF PT	F1 1	45 MIN MOP ROOM - NEOPRENE GASKET REQUIRED
D110	1 32"x84"x1 3/4"	HM PT	-	PSF PT	F1 1	
D111	1 32"x84"x1 3/4"	HM PT	-	PSF PT	F1 1	
D112	1 32"x84"x1 3/4"	HM PT	-	PSF PT	F1 1	
D113A	1 32"x84"x1 3/4"	HM PT	-	PSF PT	F1 1	
D113B	1 18"x84"x1 3/4"	HM PT	-	PSF PT	F1 1	
D114	1 32"x84"x1 3/4"	HM PT	-	PSF PT	F1 1	
D115	1 32"x84"x1 3/4"	HM PT	-	PSF PT	F1 1	
D116	1 32"x84"x1 3/4"	HM PT	-	PSF PT	F1 1	
D117	1 32"x84"x1 3/4"	HM PT	-	PSF PT	F1 1	
D119	1 32"x84"x1 3/4"	HM PT	-	PSF PT	F1 2	
D120	1 32"x84"x1 3/4"	HM PT	-	PSF PT	F1 3	
D121	1 32"x84"x1 3/4"	HM PT	-	PSF PT	F1 2	
D122	1 32"x84"x1 3/4"	HM PT	-	PSF PT	F1 2	
D123	1 36"x84"x1 3/4"	HM PT	-	PSF PT	F1 3	ACCESSIBLE DOOR, PROVIDE A DOOR CLOSER

LOGO:

 Residential / Commercial / Interior Design and Build
 PH: (587)899-5988, (403)477-0011
 Address: 220, 6424 36 ST NE
 Email: info@outlandishdesigninc.com

GENERAL NOTES:
 THIS DRAWING SHALL BE READ IN CONJUNCTION WITH STRUCTURAL, MECHANICAL, ELECTRICAL AND/OR ANY OTHER CONSULTANT DRAWINGS THAT MAY BE APPLICABLE.
 THIS DRAWING IS EXCLUSIVE PROPERTY OF THE OUTLANDISH DESIGN INC. THE INFORMATION, PLANS, DESIGNS, NOTES & ARRANGEMENTS SHOWN ON THIS DRAWING ARE CONFIDENTIAL & MAY NOT BE REPRODUCED IN WHOLE OR IN PART WITHOUT WRITTEN PERMISSION FROM OUTLANDISH DESIGN INC.
 THIS DRAWING MUST NOT BE SCALED.

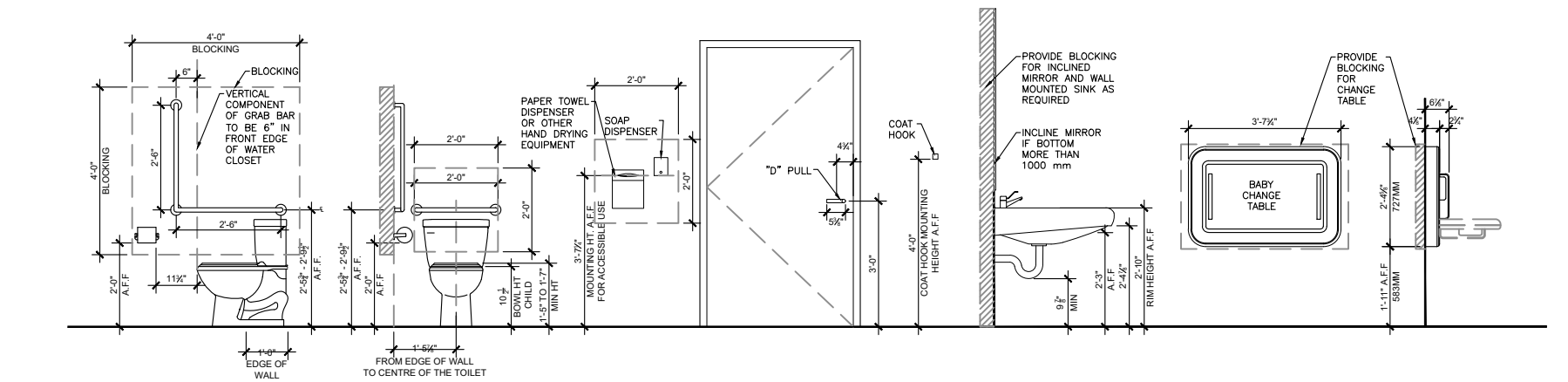
THE GENERAL CONTRACTOR SHALL VERIFY ALL DIMENSIONS, DATUM, AND LEVELS PRIOR TO THE COMMENCEMENT OF WORK. ALL ERRORS AND OMISSIONS SHALL BE REPORTED IMMEDIATELY TO OUTLANDISH DESIGN INC.

REVISION HISTORY:

NO.	DD	MM	YY	DESCRIPTION	BY
02	31	05	24	ISSUED FOR BUILDING PERMIT	
01	29	04	24	ISSUED FOR DEVELOPMENT PERMIT	SS
NO.	DD	MM	YY	ISSUED FOR	

1 PROPOSED FLOOR PLAN
 A1.00 3/16" = 1'-0"

2 PROPOSED RCP
 A1.00 3/16" = 1'-0"



3 MOUNTING HEIGHTS
 A1.00 3/16" = 1'-0"

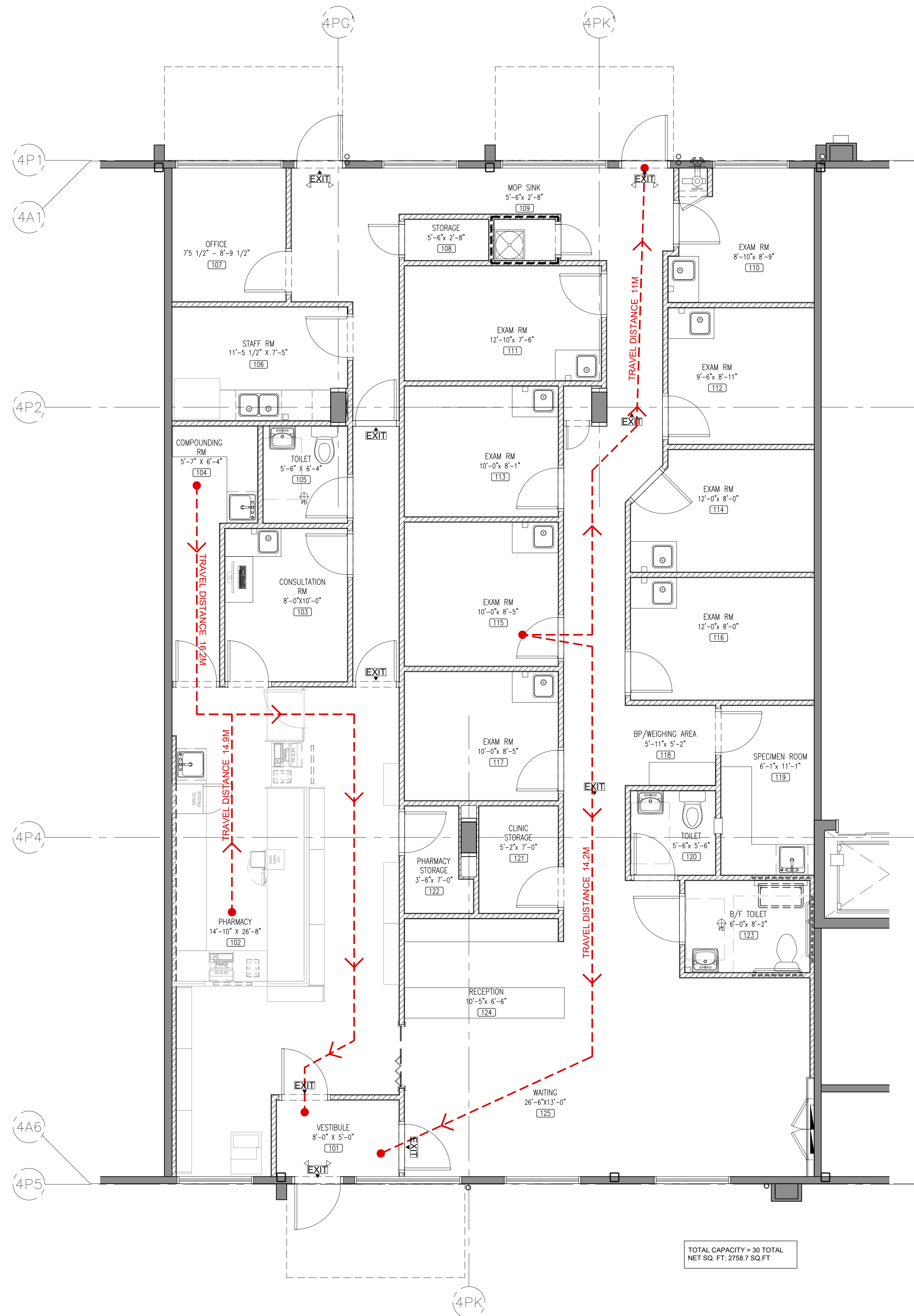
DATE:	FEB. 29, 2024	DRAWN BY:	SS	CHECKED BY:	XH, TS
ISSUE NO.:	01	SCALE:	3/16"=1'-0"	PROJECT NUMBER:	202409

LEGAL ADDRESS:
 LOT 5, BLOCK 38, PLAN 1712392

PROJECT NAME:
SKYVIEW PHARMA & MEDICAL
 #2103, 151 SKYVIEW BAY NE, CALGARY AB

DRAWING TITLE:
PROPOSED FLOORPLAN & RCP

SHEET NUMBER:
A1.00



BUILDING CODE SUMMARY:
 MUNICIPAL ADDRESS:
 UNIT #2103, 151 SKYVIEW BAY NE,
 CALGARY AB
 LEGAL DESCRIPTION:
 LOT 5, BLOCK 38, PLAN 1712392
 CURRENT ZONING: DIRECT CONTROL -
 44DC2020
 MAJOR OCCUPANCY: GROUP D
 PROPOSED OCCUPANCY: GROUP D -
 MEDICAL OFFICE
 TYPE OF CONSTRUCTION:
 NON COMBUSTIBLE CONSTRUCTION
 3.2.2.81 GROUP D, UP TO 3 STOREYS,
 (SPRINKLERED / FIRE ALARM PROVIDED)
 OCCUPANT LOAD:
 20 PEOPLE, 10 STAFF
 TOTAL OCCUPANT LOAD: 30 TOTAL
 NUMBER OF WATER CLOSETS 3.7.2.2A
 MIN NUMBER OF WATER CLOSETS
 1 MALE, 1 FEMALES UP TO A MAX OF 50
 OCCUPANTS
 PROVIDED: 3 WASHROOMS TOTAL, 1
 BARRIER FREE
 MINIMUM NUMBER OF EXITS: 3.4.2.1
 3 EXITS
 MAX TRAVEL DISTANCE: 3.4.2.4 (2)
 40M

GENERAL NOTES:
 1. DO NOT SCALE DRAWINGS
 2. ALL DIMENSIONS ARE TO FACE OF STUD
 3. ALL INTERIOR PARTITIONS HEIGHTS ARE
 AT 10'-0". ALL JOINTS ARE TO BE TAPED,
 SANDED AND PRIMED, UNLESS
 OTHERWISE NOTED
 4. FIRE RATED WALLS TO UIS OF
 STRUCTURE CAULK PERIMETER OF
 GYPSUM BOARD TO ALL BUILDING
 SUBSTRATES FOR A SMOKE / ACOUSTIC
 SEAL STC 51
 5. FIRE CAULK ALL PENETRATIONS IN
 WALLS AND CEILING WITH SPEC SEAL LC
 ENDOTHERMIC FIRESTOP SEALANT
 CANULC-S115 OR EQUIVALENT
 6. GC TO PROVIDE PLYWOOD BACKING FOR
 WALL MOUNTED EQUIPMENT AND
 MILLWORK I.E. (GRAB BARS, WALL
 MOUNTED SINKS, CHANGE TABLES ECT.)
 7. GC TO SITE VERIFY ALL SITE
 DIMENSIONS
 8. GC TO SCAN & CONFIRM ALL CORING
 FOR PLUMBING AND COORDINATE WITH
 THE LANDLORD PRIOR TO DRILLING OR
 CORING ON SITE
 9. GENERAL CONTRACTOR TO COMPLY
 WITH THE CURRENT ALBERTA BUILDING
 CODE AND TO ALL RELATED
 DOCUMENTS, BY-LAWS, RULES AND
 REGULATIONS

SYMBOL LEGEND:

- EXISTING WALLS
- NEW PARTITION WALL
- NEW PLUMBING WALL
- FIRE RATED PARTITION WALL
- 2X4 T-BAR
- DOOR NUMBER
- GLAZING TAG
- CEILING HEIGHT TAG
- PARTITION TYPE
- ROOM NAME & ROOM NUMBER

ELECTRICAL LEGEND:

1. LIGHT SWITCHES/CONTROLS TO BE MOUNTED AT 48" AFF TO CENTER OF CONTROL
2. GC TO APPLY FOR ELECTRICAL PERMITS
3. REFER TO ELECTRICAL DRAWINGS

- NEW EXIT SIGN W/ EMERGENCY LIGHTS & BACKUP BATTERY
- NEW DIRECTIONAL EXIT SIGN
- EXISTING EMERGENCY LIGHT & BACKUP BATTERY
- EXISTING ELECTRICAL PANEL
- NEW SMOKE/ CARBON MONOXIDE DETECTOR
- NEW FIRE EXTINGUISHER
- EXISTING REMOTE LIGHTING HEAD

LOGO:

 Residential /Commercial /Interior Design and Build
 PH: (587)899-5988, (403)477-0011
 Address: 220, 6424 36 ST NE
 Email: info@outlandishdesigninc.com

GENERAL NOTES:
 THIS DRAWING SHALL BE READ IN CONJUNCTION WITH STRUCTURAL, MECHANICAL, ELECTRICAL AND/OR ANY OTHER CONSULTANT DRAWINGS THAT MAY BE APPLICABLE.
 THIS DRAWING IS EXCLUSIVE PROPERTY OF THE OUTLANDISH DESIGN INC. THE INFORMATION, PLANS, DESIGNS, NOTES & ARRANGEMENTS SHOWN ON THIS DRAWING ARE CONFIDENTIAL & MAY NOT BE REPRODUCED IN WHOLE OR IN PART WITHOUT WRITTEN PERMISSION FROM OUTLANDISH DESIGN INC.
 THIS DRAWING MUST NOT BE SCALED.
 THE GENERAL CONTRACTOR SHALL VERIFY ALL DIMENSIONS, DATUM, AND LEVELS PRIOR TO THE COMMENCEMENT OF WORK. ALL ERRORS AND OMISSIONS SHALL BE REPORTED IMMEDIATELY TO OUTLANDISH DESIGN INC.

REVISION HISTORY:

NO.	DD	MM	YY	DESCRIPTION	BY
02	31	05	24	ISSUED FOR BUILDING PERMIT	
01	29	04	24	ISSUED FOR DEVELOPMENT PERMIT	SS
	NO.	DD	MM	YY	ISSUED FOR

DATE: FEB. 29, 2024
 ISSUE NO: 01
 SCALE: 3/16"=1'-0"
 LEGAL ADDRESS: LOT 5, BLOCK 38, PLAN 1712392
 PROJECT NAME: SKYVIEW PHARMA & MEDICAL

DRAWN BY: SS
 CHECKED BY: XM, TS
 PROJECT NUMBER: 202409

PROJECT NAME:
SKYVIEW PHARMA & MEDICAL
 #2103, 151 SKYVIEW BAY NE, CALGARY AB

DRAWING TITLE:
PROPOSED TRAVEL DISTANCE

SHEET NUMBER:
A1.01

NORTH
 1 TRAVEL DISTANCE PLAN
 A1.01 / 3/16" = 1'-0"

TOTAL CAPACITY = 30 TOTAL
 NET SQ. FT. 2758.7 SQ. FT.