

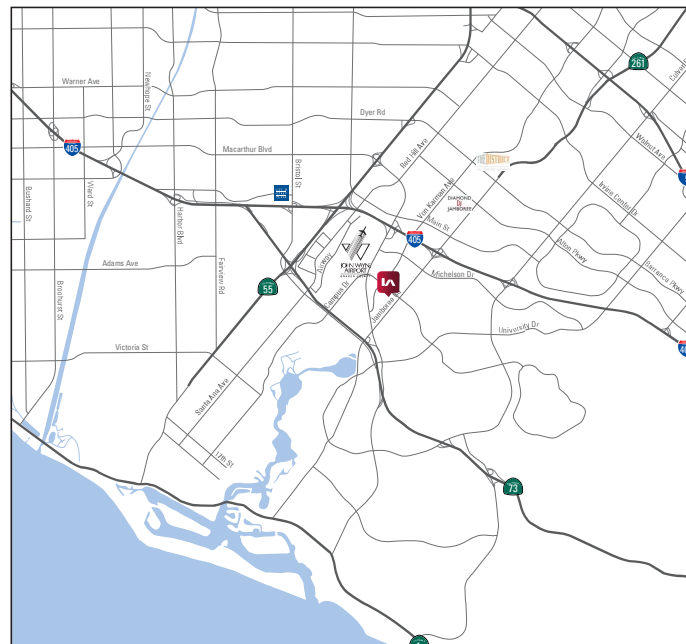
AVAILABLE FOR LEASE - ±2,500 SF GROUND FLOOR OFFICE SUITE

5100 BIRCH STREET, SUITE 100, NEWPORT BEACH, CA 92660



PROPERTY FEATURES

- » ±2,500 SF Ground Floor Office Suite
- » Parking: ±4:1,000 SF
- » Reception, 8 Private Offices, Open Area and Kitchen
- » In-Suite restrooms
- » Refurbishments Complete
- » Prime location across from the Harbor Justice Center
- » Minutes from John Wayne Airport
- » Excellent Access to Newport (55),
San Diego (405), and Corona Del Mar (73) Freeways



CONTACT US

DAVID BOLT
949.231.8309
dbolt@lee-associates.com
DRE #: 01169899

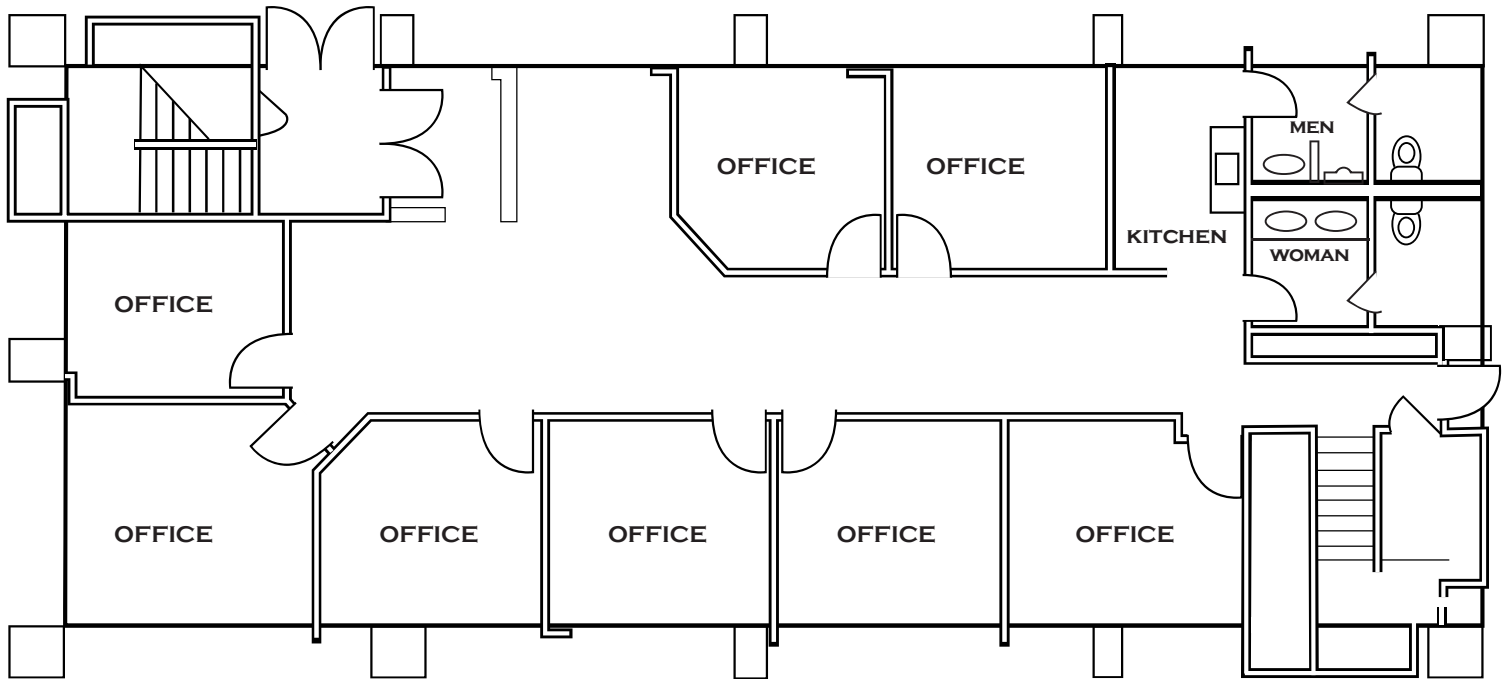
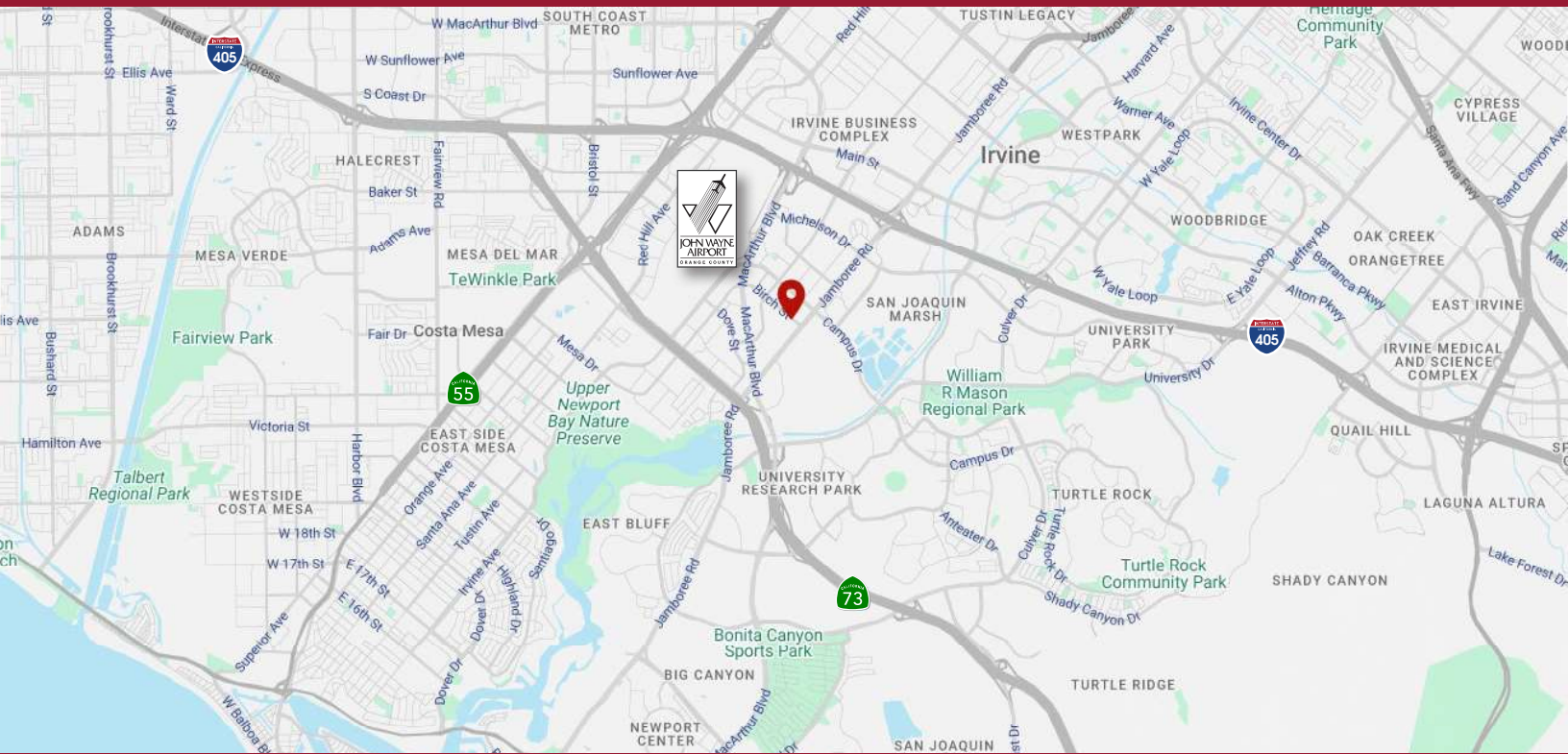
NICK DUMKE
916.380.9920
ndumke@lee-associates.com
DRE #: DRE 02248932

MADDIE ZACHER
949.244.3721
mzacher@lee-associates.com
DRE: 02385200

 **LEE &
ASSOCIATES**
COMMERCIAL REAL ESTATE SERVICES
NEWPORT BEACH

AVAILABLE FOR LEASE - ±2,500 SF GROUND FLOOR OFFICE SUITE

5100 BIRCH STREET, SUITE 100, NEWPORT BEACH, CA 92660



CONTACT US

DAVID BOLT
949.231.8309
dbolt@lee-associates.com
DRE #: 01169899

NICK DUMKE
916.380.9920
ndumke@lee-associates.com
DRE #: DRE 02248932

MADDIE ZACHER
949.244.3721
mzacher@lee-associates.com
DRE: 02385200

LEE & ASSOCIATES
COMMERCIAL REAL ESTATE SERVICES
NEWPORT BEACH

AVAILABLE FOR LEASE - ±2,500 SF GROUND FLOOR OFFICE SUITE

5100 BIRCH STREET, SUITE 100, NEWPORT BEACH, CA 92660



CONTACT US

DAVID BOLT
949.231.8309
dbolt@lee-associates.com
DRE #: 01169899

NICK DUMKE
916.380.9920
ndumke@lee-associates.com
DRE #: DRE 02248932

MADDIE ZACHER
949.244.3721
mzacher@lee-associates.com
DRE: 02385200

 **LEE & ASSOCIATES**
COMMERCIAL REAL ESTATE SERVICES
NEWPORT BEACH