

OFFICE SPACE
FOR LEASE

5885 Central Ave

5885 CENTRAL AVENUE • ST PETERSBURG, FL • 33710



COMPETITIVE LEASE RATES

PROPERTY OVERVIEW

Square Footage Available	5,500 sf
Property Type	Office
Property Size	9,832 sf
Class / Year Built	B / 2002
Parking	5.8/1,000

PROPERTY FEATURES

- + Spacious suite featuring large reception & conference room, 5-6 private offices, 3 bathrooms (one w/ADA shower), breakroom, large open area ideal for workstations
- + High visibility with monument and building signage available

LOCATION

- + Centrally located just west of the intersection of 58th St with easy access from both Central Ave and 1st Ave N
- + Convenient access to Downtown St. Petersburg, beaches and I-275
- + Less than 4 miles from St Petersburg General Hospital and numerous medical, retail, restaurants and banking nearby
- + 10 miles from St Pete/Clearwater International Airport



Judy Healey, RPA
(813) 299-5883 mobile
jhealey@ciminelli.com



OFFICE SPACE FOR LEASE

5885 Central Ave

5885 CENTRAL AVENUE • ST PETERSBURG, FL • 33710



2025 DEMOGRAPHIC INFORMATION

RADIUS	1 MILE	3 MILE	5 MILE
Population	12,521	104,575	263,846
Total Households	5,557	48,080	123,370
Median Age	47	47.9	47.6
Median HH Income	\$78,266	\$71,398	\$69,322

Source: CoStar Group/US Census Bureau

DRIVE TIMES

I-275	3.7 mi	8 minutes
St Pete Beach	3.6 mi	9 minutes
Downtown St Petersburg	4.7 mil	12 minutes
St Pete-Clearwater International Airport	10.8 mi	18 minutes



Judy Healey, RPA
(813) 299-5883 mobile
jhealey@ciminelli.com

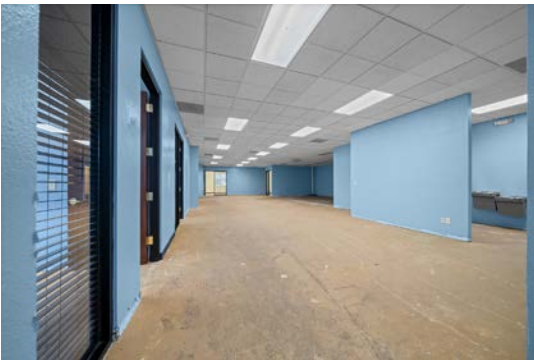
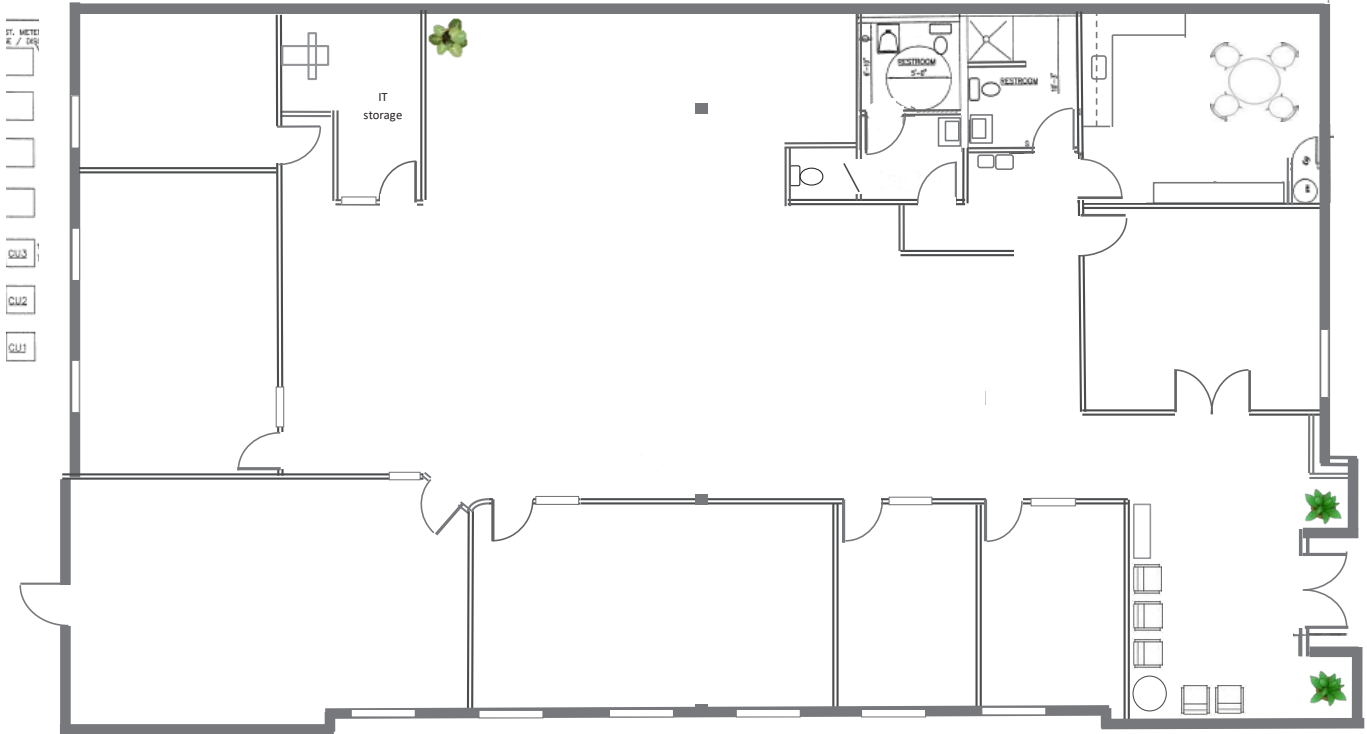


OFFICE SPACE
FOR LEASE

5885 Central Ave

5885 CENTRAL AVENUE • ST PETERSBURG, FL • 33710

FLOOR PLAN SUITE A - 5,500 SF



Judy Healey, RPA
(813) 299-5883 mobile
jhealey@ciminelli.com

