



Licensed Real Estate Broker

335 First Avenue,
New York, NY 10003

RETAIL SPACE



Sunny I. Zachi
Director
Alpha Properties NYC
Sunny@AlphaNYC.com
(917) 553-6587

Tal Grafi
President
Grafi Realty
GrafiRealty@gmail.com
516-225-5414

The Opportunity:

Exceptional ground-floor retail space featuring expansive glass frontage on a high-visibility corner. Approx. 76 ft x 17 ft (see floor plan) with a large, usable basement—ideal for most dry uses.

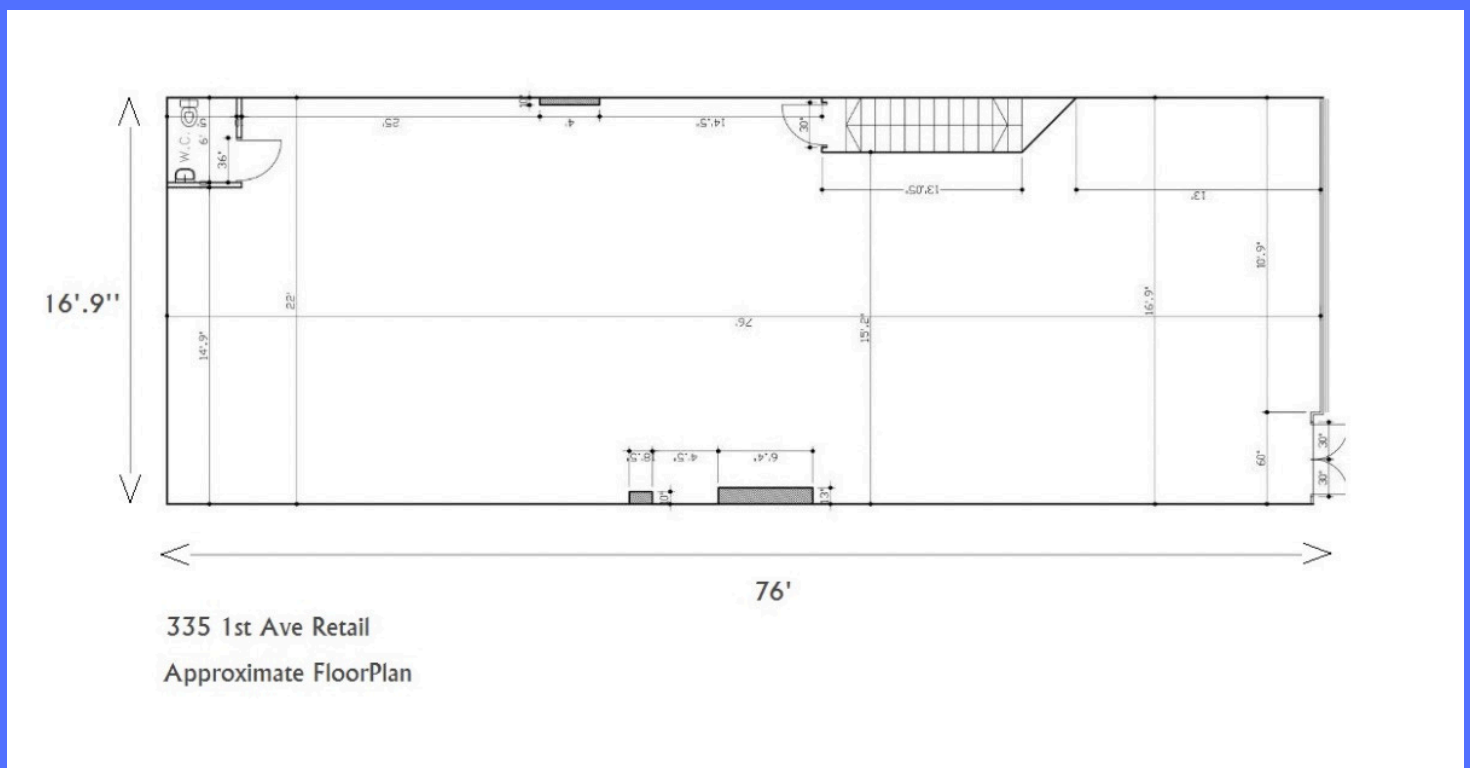
The unit can be delivered as-is with existing built-in offices, or as a vanilla box, offering full flexibility for a variety of layouts and business types.

Perfect For:

Medical office – Spa – Nail salon – Pet grooming – Boutique retail or other service oriented uses

The Location:

Nestled in the heart of Manhattan's East Village, this property enjoys outstanding foot traffic and neighborhood visibility. Steps from Stuyvesant Town and Union Square, surrounded by dense residential towers, medical offices, cafés, and boutique retailers – attracting both local residents and commuter clientele.



Prime East Village Retail Space

335 First Avenue | Corner of East 20th Street

Asking Rent: \$13,750 / month

Size: 1650 SF Ground + 800 SF Basement



While we strive to provide accurate information about properties available for sale, rent, or financing, it's important to note that despite our efforts, errors, omissions or changes in price, rental terms, or other conditions may occur. Properties may be subject to prior rental, sale, financing or withdrawal without prior notice. We do not make any warranties or representations regarding the condition of the property or any potential hazards it may contain. Additionally, the renderings depicted in our offering materials may not be specifically approved for the referenced development site. Any buildable square footage mentioned should be verified by the purchaser's own architect and/or zoning attorney. Your understanding and due diligence in evaluating the property are greatly appreciated.

80 8th Avenue, Suite 1216, New York, NY 10011

P: 212.674.1645 F: 212.674.2032 www.AlphaNYC.com