



St. Georges House, Bromley Road, Kent
£25,000 per annum



St. Georges House, 2 Bromley Road

Kent

Second floor, 1,776 sq ft commercial space in central Beckenham with private terrace, air conditioning, kitchen, accessible bathroom, and great natural light. New lease available immediately.

- Versatile second floor commercial space
- Central Beckenham location with good transport links
- Approx. 1,776 sq ft (165 sqm)
- Additional private terrace of approx. 441 sq ft
- Suitable for a variety of uses (subject to consents)
- Attractive period building
- Excellent natural light throughout
- Flexible internal layout
- Accessible bathroom facilities

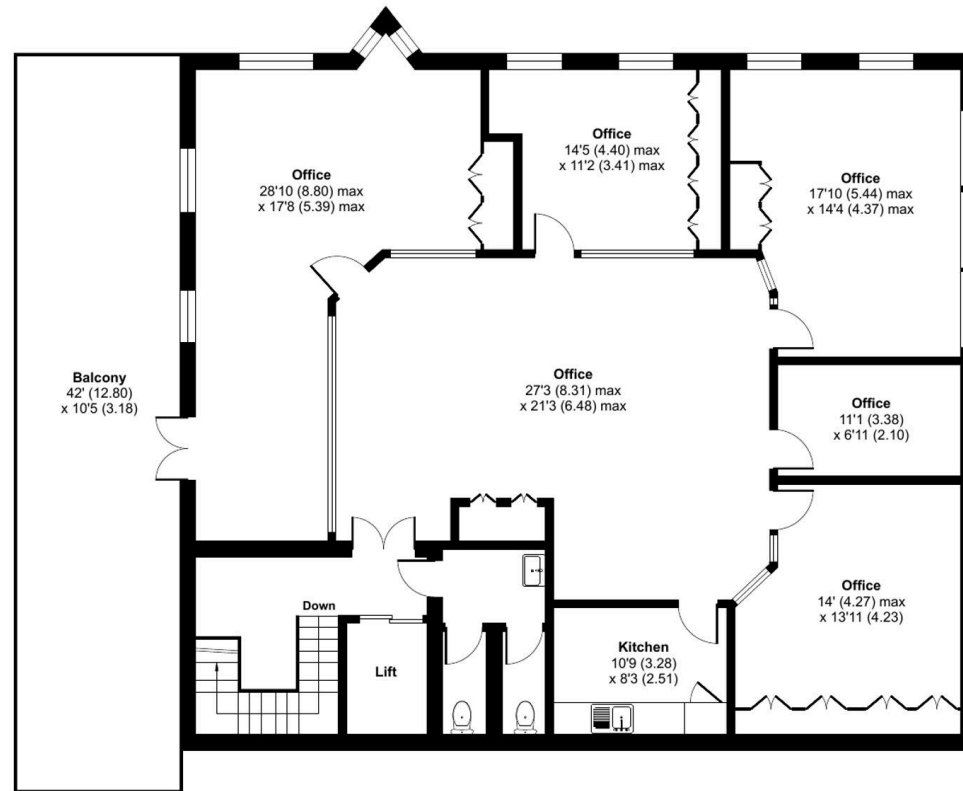


Bromley Road, Beckenham, BR3

Approximate Area = 1776 sq ft / 165 sq m

Balcony = 441 sq ft / 41 sq m

For identification only - Not to scale



SECOND FLOOR