

The background features a dark blue field with a complex geometric pattern. A prominent white line forms a large, stylized 'L' shape that divides the space. This white line is surrounded by thick, gold-colored borders that create a series of nested, stepped geometric shapes, including triangles and rectangles, reminiscent of a stylized architectural element or a modern logo. The overall aesthetic is clean, modern, and architectural.

BRINDLEY PLACE
Birmingham

CONTENTS

6

Community

12

Location

18

Opportunity

THE PLACE



**4,800 - 5,000 sq ft forward
thinking offices to let**





10,000 KINDRED SPIRITS





For over 20 years, Brindleyplace has been Birmingham's byword for best-in-business.

Home to an impressive array of blue chip and professional services occupiers, it has developed a well-deserved reputation through its managed environment – the only one in Birmingham – the quality of its buildings, and continuing investment.

With ongoing development across Birmingham, there has never been a better time to be a part of the Brindleyplace community.

Become part of our community

We all like our colleagues, but what we like more is meeting new people. The range of on-site events and activities at Brindleyplace – from live music at the Water’s Edge, to visits from street food vans and yoga classes – bring together individuals from the estate’s huge range of occupiers to mix, mingle and meet each other.





Left > Right
/ The Gentleman's Barbers / Yoga Class
/ All Bar One / Pizza Express / Street Food /
/ Ethos - Florist / Bandstand



/ Events at Brindleyplace are as well-known (and we think much loved) as the estate itself. Open to the public all year round, it is the perfect destination for large-scale outdoor entertainment.





Left > Right
Film Festival,
Family festival and
Food Festival

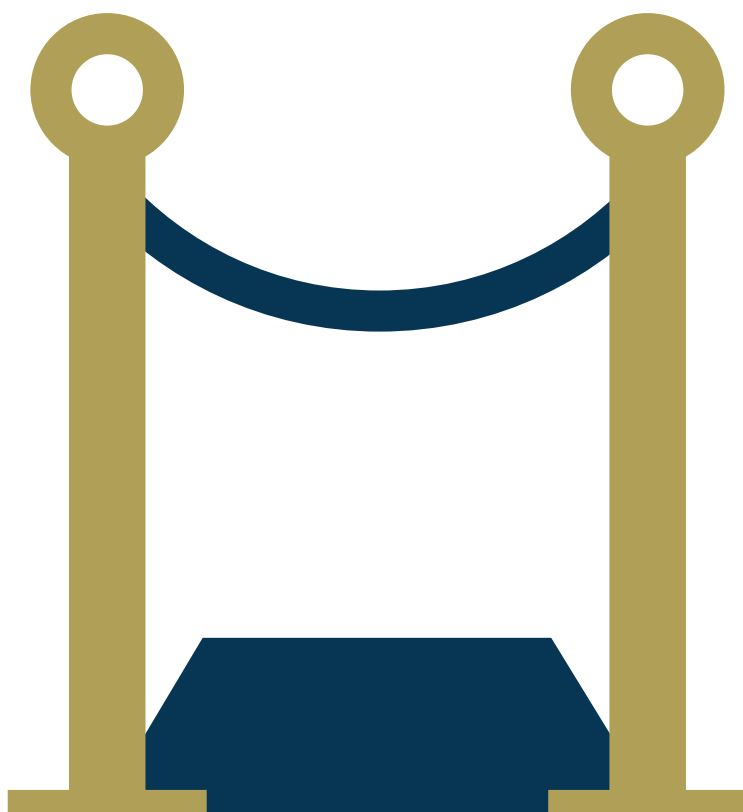


Firm favourites & new fixtures

There's always something going on at Brindleyplace with a full calendar of events taking place all year round. From family-friendly days and live music, to markets and film screenings, all of our events are completely free to attend.

Take to the canals and cheer on the teams battling it out at the renowned Dragonboat Race, held in June. A firm fixture in the city's events calendar, the race is now part of the Brindleyplace Family Festival, offering fun for all ages in Central Square.

The Brindleyplace Film Festival in July plays host to the biggest blockbusters on our outdoor screen, or why not add our Food Festival in September to your diary, where you can indulge in a host of tasty treats.



A woman with long blonde hair, wearing a red and blue patterned top, is smiling and looking towards the right. She is holding a glass of beer. In the foreground, several other glasses of beer are being held up, suggesting a toast or social gathering. The background is blurred, showing other people and a blue and white striped banner. The overall atmosphere is warm and social.

WORK AND PLAY

Isn't it a pain when you finish work and have nowhere to go for a quick drink before your train?

At Brindleyplace, we combine the best of Grade A offices that meet the requirements of modern occupiers, with an enviable selection of bars and restaurants at The Water's Edge.

And of course there's an on-site barbers, Ethos florist, gym and convenience store for those who need a quick trim, fancy something floral, squeeze in a quick lunchtime workout, or just need to grab a paper!





1 Brindleyplace

- Birmingham 2022

2 Brindleyplace

- Lloyds Banking Group

3 Brindleyplace

- Avison Young
- Landmark

4 Brindleyplace

- Deloitte
- Marsh & McLennan Companies
- PageGroup
- Unity Trust Bank

5 Brindleyplace

- Deutsche Bank
- Places Birmingham

6 Brindleyplace

- WeWork

7, 8 Brindleyplace

- RBS

10 Brindleyplace

- Available

Oozells Building (9)

- Free Radio
- Odgers Berndtson/ Berwick Partners

11 Brindleyplace

- Aston Carter
- Colliers International LLP
- Friend LLP
- Global Radio
- Hettle Andrews & Associates Ltd
- MSO Workspace Ltd
- Robert Walters





Restaurants

1. Bank
2. Café Rouge
3. Carluccio's
4. Cielo
5. Coast to Coast
6. Gourmet Burger Kitchen
7. handmade burger Co.
8. Maribel
9. Piccolino
10. Pizza Express
11. Recess
12. Siamais
13. Vietnamese Street Kitchen
14. wagamama
15. Zizzi

Leisure

16. Bannatyne Health Club
17. Crescent Theatre
18. IKON Gallery
19. The National SEALIFE Centre

Cafés + Bars

20. All Bar One
21. Be At One
22. Caffè Nero
23. Costa Coffee
24. EAT
25. NUVO
26. Pitcher & Piano
27. Slug & Lettuce
28. The Alchemist
29. Yorks at Ikon

Retail

30. Baguette du Monde
31. Boots
32. Ethos - Florist
33. Ikon Shop
34. Places Birmingham
35. Sainsbury's Local
36. SPAR
37. SUBWAY
38. The Gentlemen Barbers

Accommodation

39. Hilton Garden Inn
40. Saco Apartments

/ Location is key & Brindleyplace
is perfectly situated to take full
advantage of Birmingham's
current period of burgeoning
development, with so much all
within a short walk...



1 min

1. SEALIFE



1 mins

2. IKON Gallery



3 mins

3. Crescent Theatre



3 mins

**4. Arena Birmingham
/ LEGOLAND
Discovery Centre**



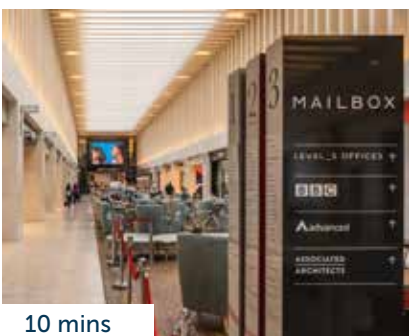
3 mins

5. The ICC



9 mins

6. The Cube



10 mins

7. Mailbox



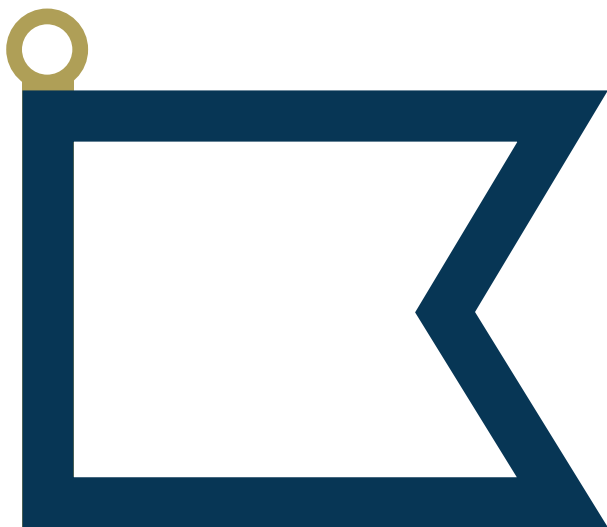
15 mins

8. Grand Central



15 mins

9. Bullring



STYLE WITH PURPOSE



Reception Area CGI



Brindleyplace continues to receive significant investment with £3 million committed to the refurbishment and improvement of 3 and 4 Brindleyplace.

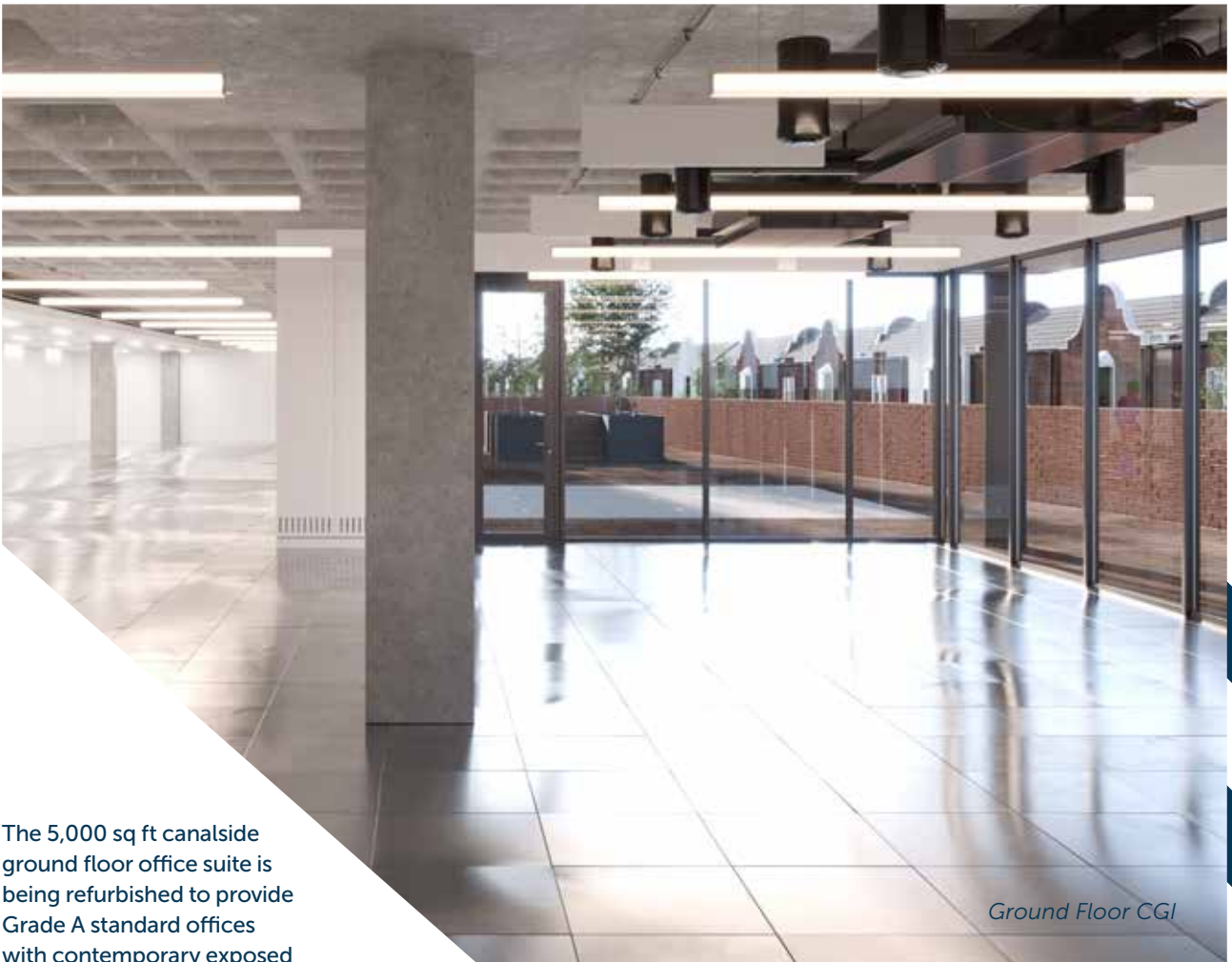
Building users at 4 Brindleyplace will see upgrades to its entrance and reception space, with a new and repositioned desk and visitor seating as well as improvements to finishes.



Canalside Terrace CGI



Office CGI



Ground Floor CGI

The 5,000 sq ft canalside ground floor office suite is being refurbished to provide Grade A standard offices with contemporary exposed services, suspended LED light fittings and raised floors, and access to a private canalside terrace.

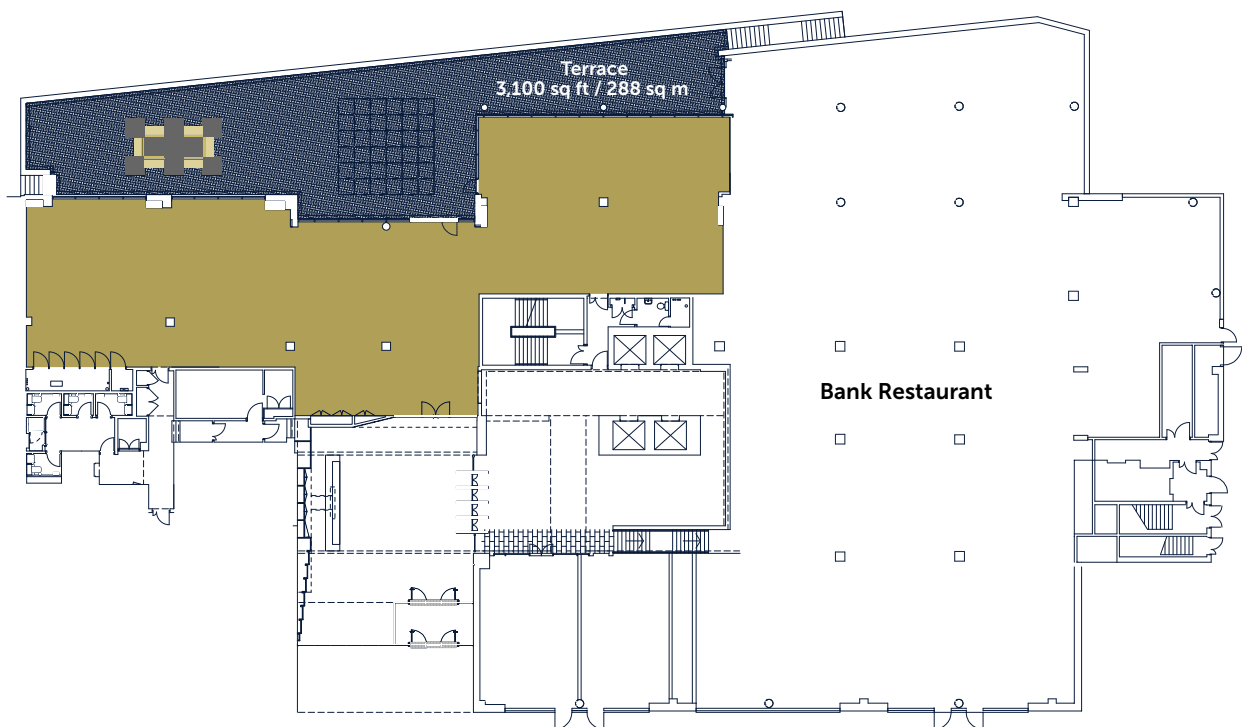


Office CGI



GROUND FLOOR

4,939 sq ft / 458.8 sq m

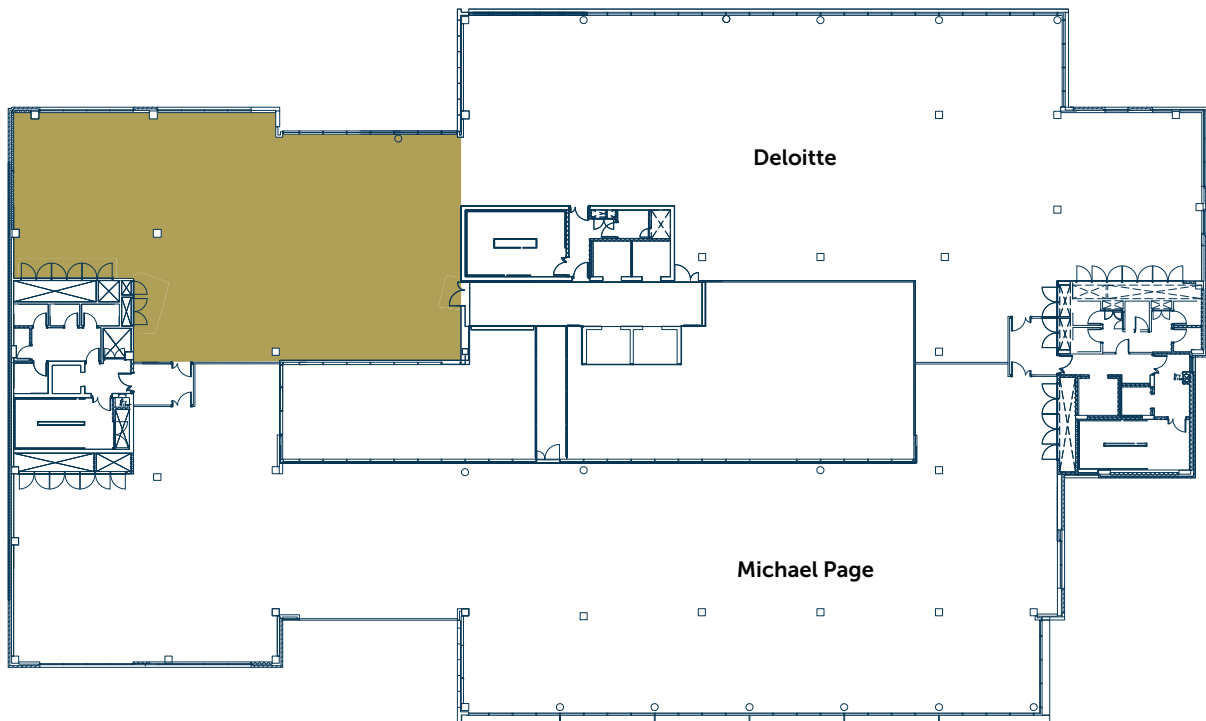


Specification

- Featured manned reception
- Full height atrium
- Open plan floorplate
- Three passenger lifts and additional goods lift
- LED luminaires
- EPC rating C
- Secure basement car parking available, with an option for further spaces in the Canalside Car Park

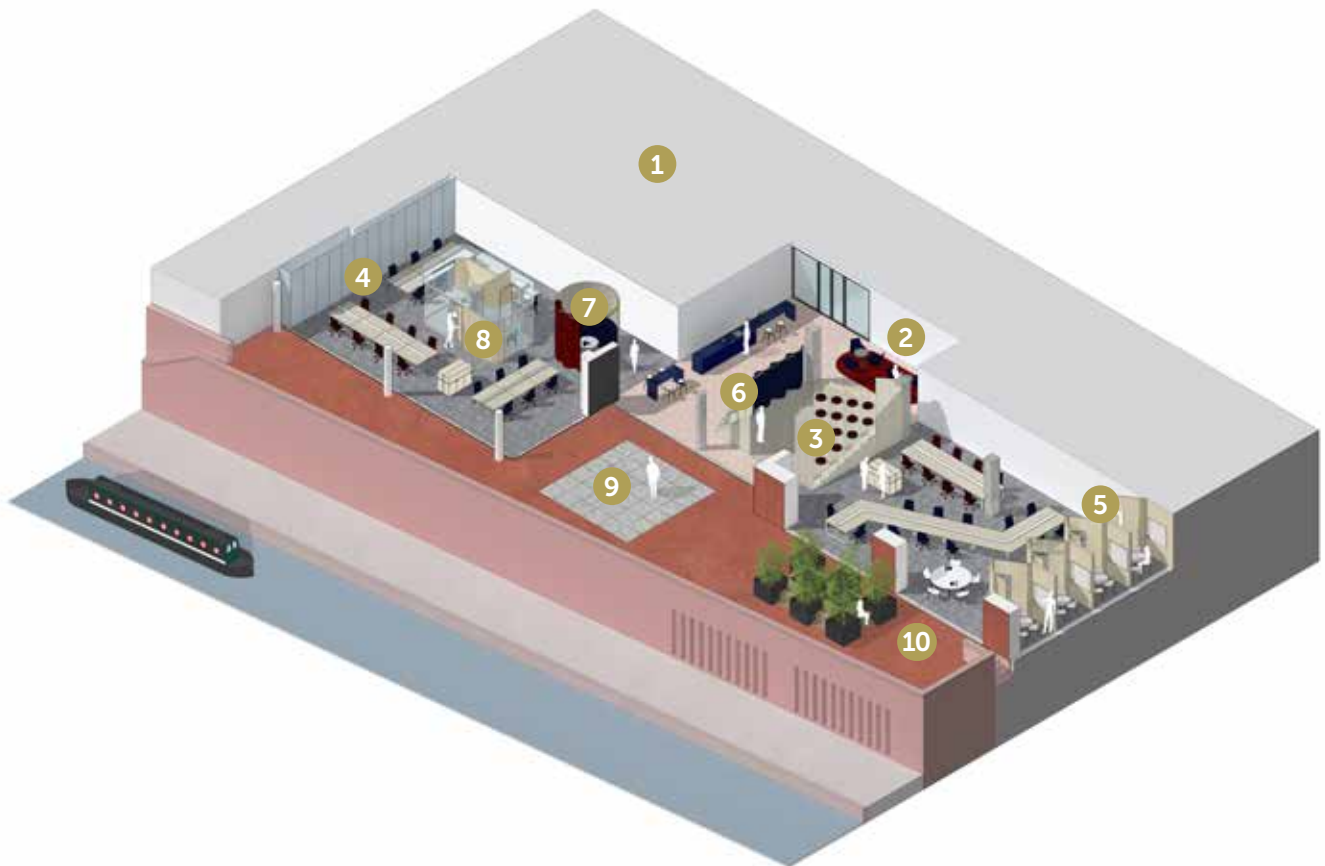
4TH FLOOR

4,796 sq ft / 445.5 sq m



- Comprehensive building management system to enable reduced running costs
- Male, female and disabled WCs and shower facilities on each floor
- Four pipe fan coil air-conditioning
- Raised access floors
- DDA compliant

GROUND FLOOR SPACEPLAN - 1:10



49 workstations

- | | |
|-----------------------|---------------------|
| 1. Building Reception | 6. Break Space |
| 2. Client Lounge | 7. Meeting Suite |
| 3. Ideas Forum | 8. Executive Suite |
| 4. Workstations | 9. Canal Terrace |
| 5. Workbooths | 10. Terrace Seating |

GROUND FLOOR SPACEPLAN - 1:8



61 workstations

- | | |
|-----------------------|---------------------|
| 1. Building Reception | 7. Workbooth |
| 2. Office Reception | 8. Printing Booth |
| 3. Client Lounge | 9. Executive Suite |
| 4. Break Space | 10. Canal Terrace |
| 5. Meeting Suite | 11. Terrace Seating |
| 6. Workstations | |

BRINDLEY PERKS

The place for offers

Our new scheme replaces our previous loyalty card as we go completely digital.

Access exclusive offers and discounts from across the estate straight from your phone. Signing up takes less than 5 minutes – simply register your details on our website [Brindleyplace.com](#).

[com/perks](#) to browse the incredible deals available. Select the deal you'd like, click 'redeem' and present to the cashier with your bill.

It's that easy.



Portal

The place to communicate

Never to be knowingly outdone, the team at Brindleyplace have developed a new tenants' portal, designed to create greater levels of connectivity and communication.

that enables the landlord and estate management to communicate directly with the tenants...and the tenants to communicate with each other, expanding Brindleyplace's sense of community.

The Tenant Portal is a handy smartphone app



GOT OUR NUMBER?

For office enquiries contact:

AVISON
YOUNG

savills

Charles Toogood

charles.toogood@avisonyoung.com
+ 44 (0) 121 609 8448

George Jennings

george.jennings@avisonyoung.com
+ 44 (0) 121 609 8458

Ben Thacker

ben.thacker@savills.com
+44 (0) 121 200 4561

Jonathan Ottewell

jottewell@savills.com
+44 (0) 121 634 8419

Misrepresentation Act: Avison Young and Savills for themselves and for the vendors or lessors of this property, whose agents give notice that: a) all particulars are set out as general outline only for the guidance of intending purchasers or lessees, and do not comprise part of an offer or contract; b) all descriptions, dimensions, references to condition and necessary permissions for use and occupation, and other details are given in good faith and are believed to be correct but any intending purchasers or tenants should not rely on them as statements or representations of fact but must satisfy themselves by inspection or otherwise as to the correctness of each of them. c) no person in the employment of Avison Young and Savills has any authority to make any representation of warranty whatsoever in relation to this property, December 2019.

Designed and produced by Core. 0121 232 5000 / core-marketing.co.uk



4BRINDLEYPLACE.CO.UK