

220 W 19 Street Chelsea | NYC



220 West 19th Street Chelsea | NYC

220 West 19th Street is a boutique, 12-story office building in the heart of Chelsea. Built in 1910, it is owned and occupied by Red Circle, the parent company of Diesel. Known as the Diesel HQ for North American operations, it has also housed other renowned fashion brands like Maison Margiela.

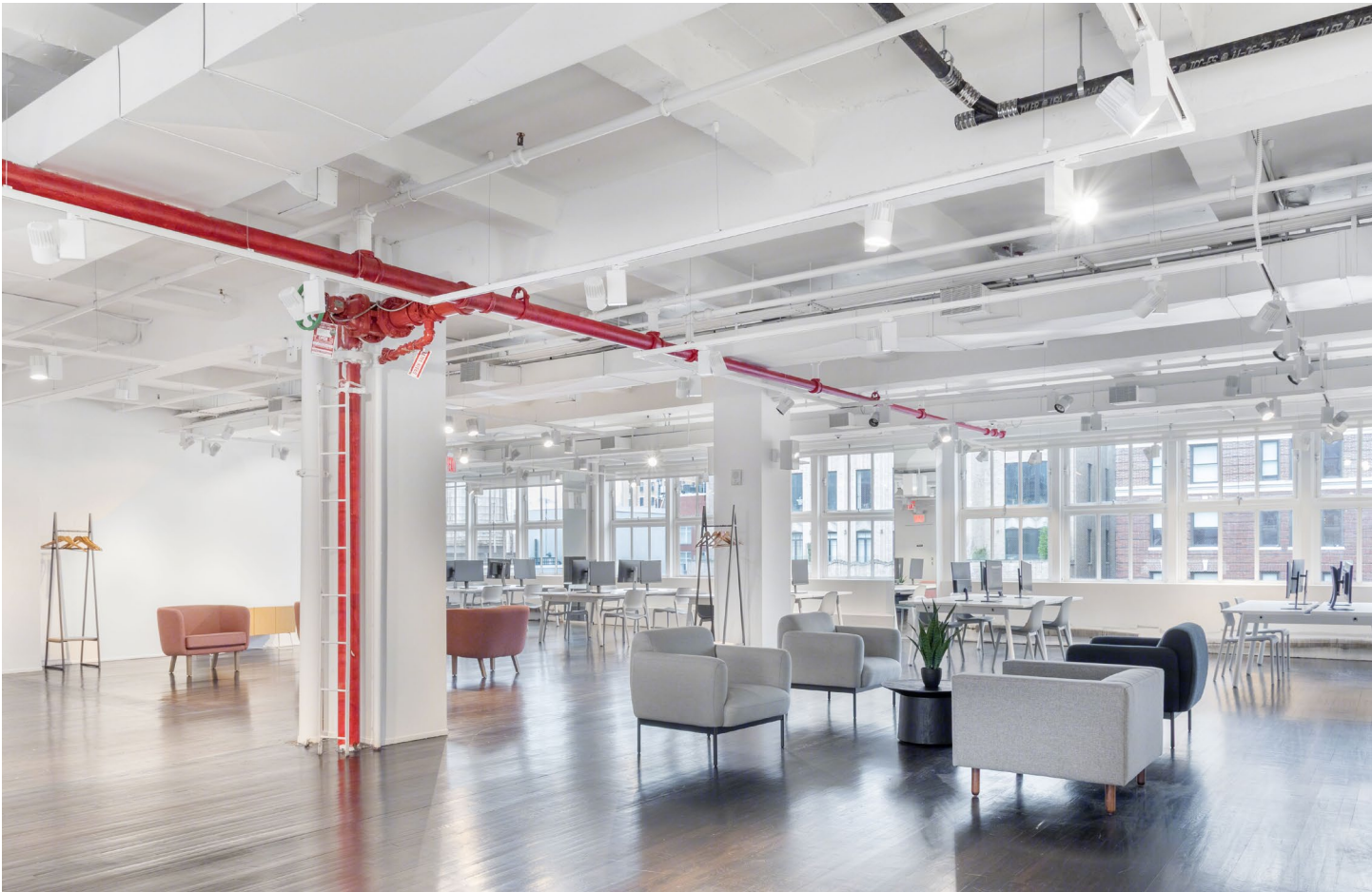
The well-maintained building recently underwent capital improvements to the façade, lobby, turnstiles, and elevator system. It offers quick access to attractions like the Highline, Chelsea Market, and Union Square Park, as well as amenities such as fitness centers, fine dining, shopping, cafés, and nightlife.

Easily accessible, the property is walking distance from 9 major subway lines (**1 2 3 A C E F M** and **L**), the PATH, and is surrounded by Citi Bike stations, ensuring an easy commute to and from all areas of Manhattan.

Building Highlights

- Owner occupied
- Recent capital improvements include facade, lobby renovations, and elevator systems
- 24/7 attended lobby
- 12' slab-to-slab heights with large operable windows to allow plenty of natural light
- Crunch Fitness at the base offering tenant promotions





220 W 19 Street Chelsea | NYC

Current Availabilities

Entire 3rd Floor — **LEASED**

Entire 4th Floor — **LEASED**

Entire 10th Floor (divisible) 9,308 RSF*

Partial 11th Floor — **LEASED**

Partial 11th Floor 5,481 RSF*

*Contiguous Space totaling 14,789 RSF

Possession

Entire 10th Floor Immediate

Partial 11th Floor Immediate

Term

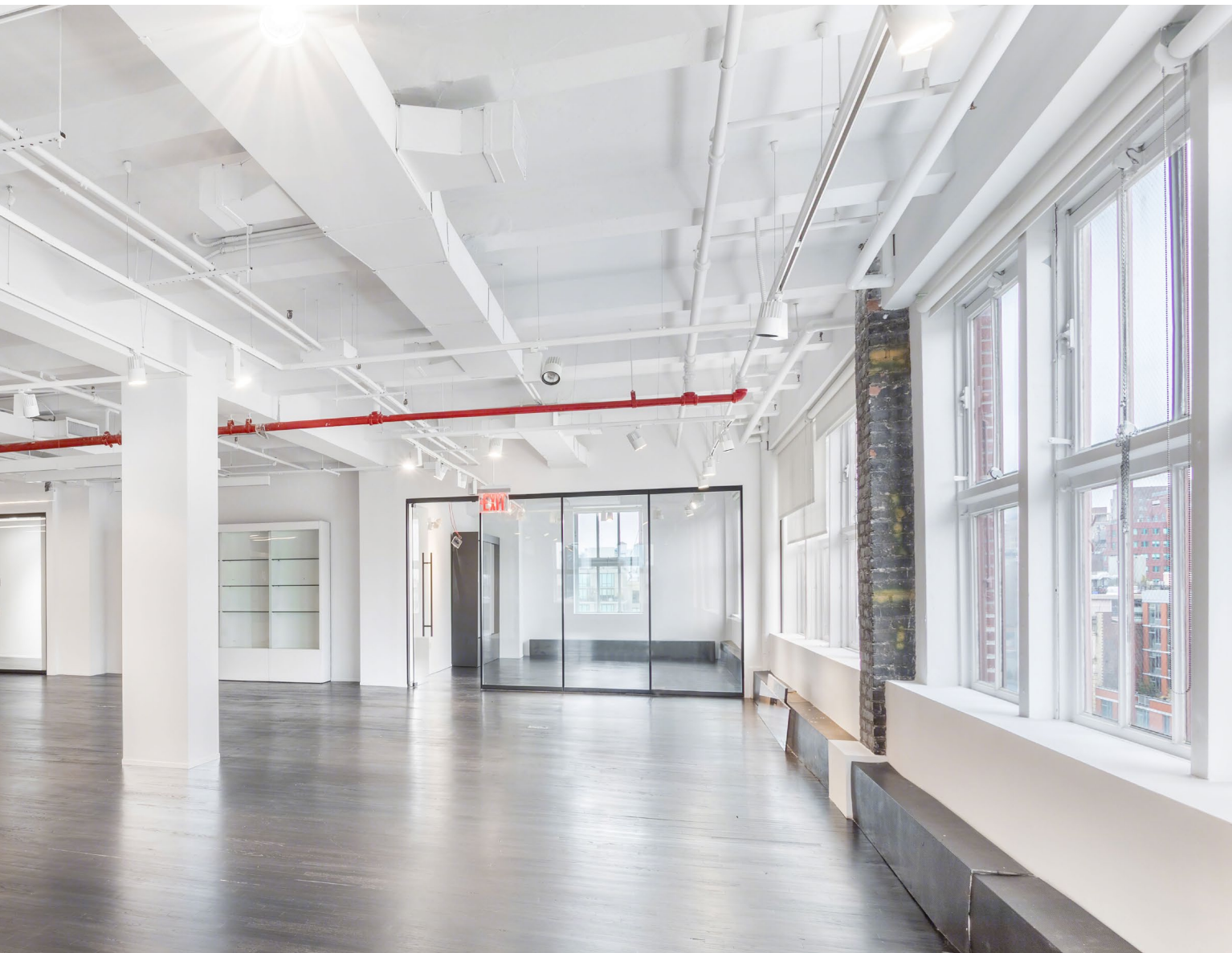
Entire 10th Floor Negotiable

Partial 11th Floor Negotiable

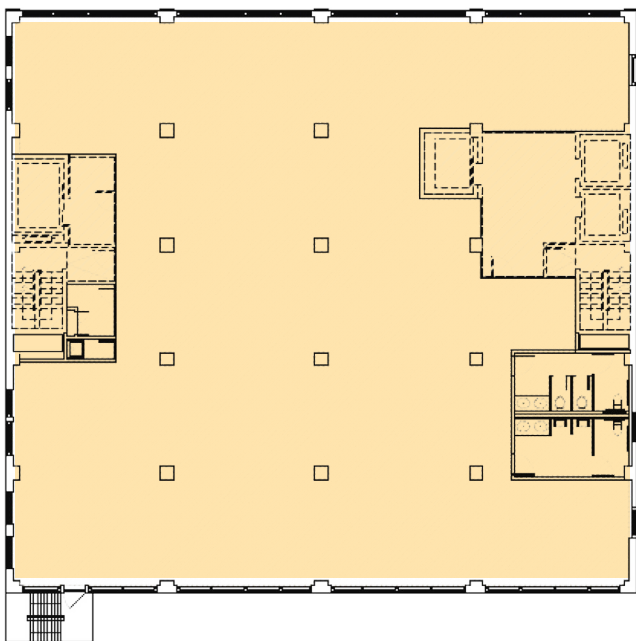
Entire 10th and Partial 11th Floors

- Floors feature existing showroom space
- Landlord will provide new building installation
- High ceilings, an abundance of natural light from oversized windows, along with panoramic views including Hudson Yards and Midtown
- Contiguous space totaling 14,789 RSF

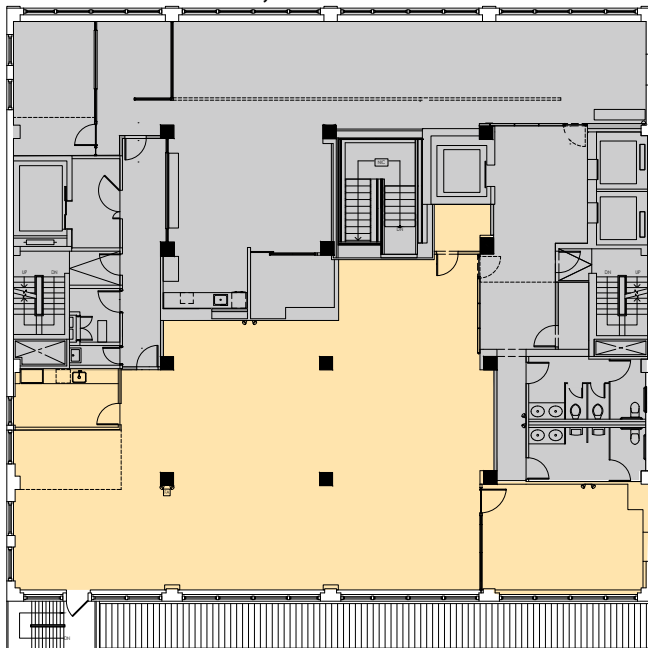


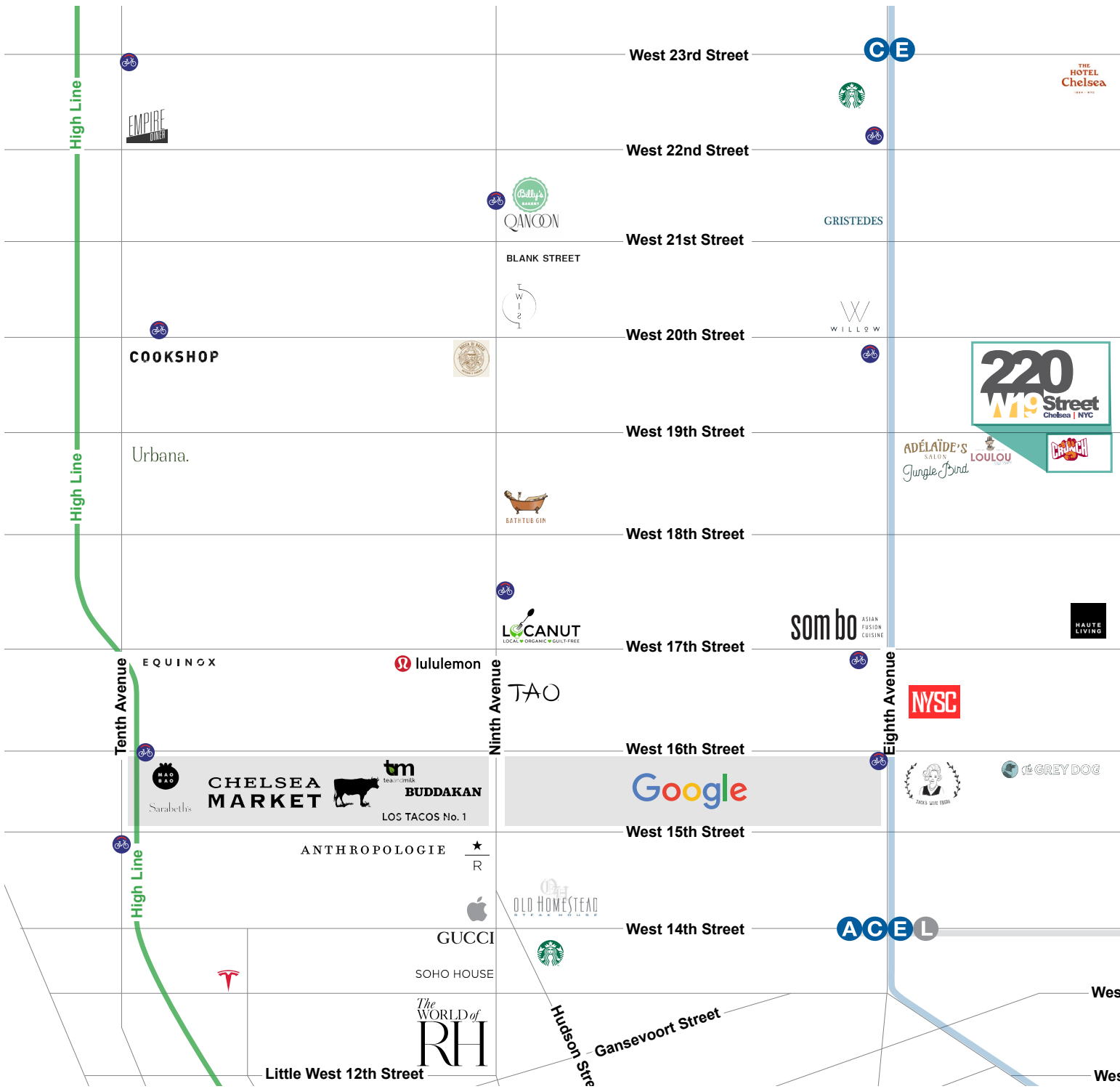


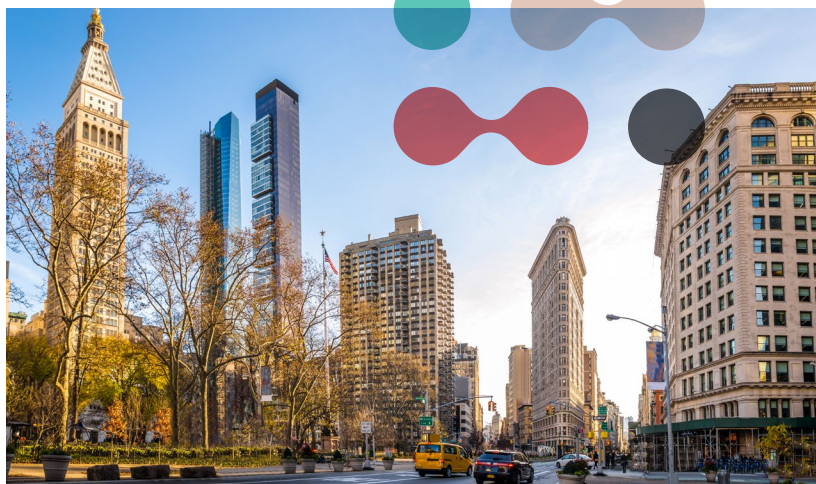
Entire 10th Floor (divisible) - 9,308 RSF



Partial 11th Floor - 5,481 RSF









For more information, please contact exclusive leasing agents:

Patrick Steffens
Senior Director
212 729 7945
patrick.steffens@avisonyoung.com

Thomas Usher
Associate
212 729 3974
thomas.usher@avisonyoung.com

Joel Wechsler
Senior Director
212 729 1906
joel.wechsler@avisonyoung.com

Michael Gottlieb
Principal
212 729 6809
michael.gottlieb@avisonyoung.com

