

FOR LEASE



Chuck McNulty

Broker

Mobile: (407) 619-4245

Chuck@mcnultygroupinc.com

Office Address:

2315 Lynx Lane

Suite # 6

Orlando, Florida 32804

www.mcnultygroupinc.com

7420 TPC Blvd Orlando, FL 32822

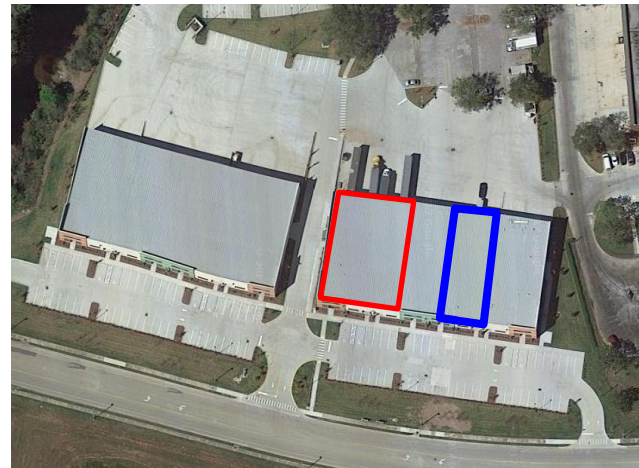
Suite 1- 3

Suite Size: **11,250 ±SF**
Office: **1,250 ±SF**
A/C Warehouse: **10,000 ±SF**
Doors: **(6) Dock High
(1) Grade Level**

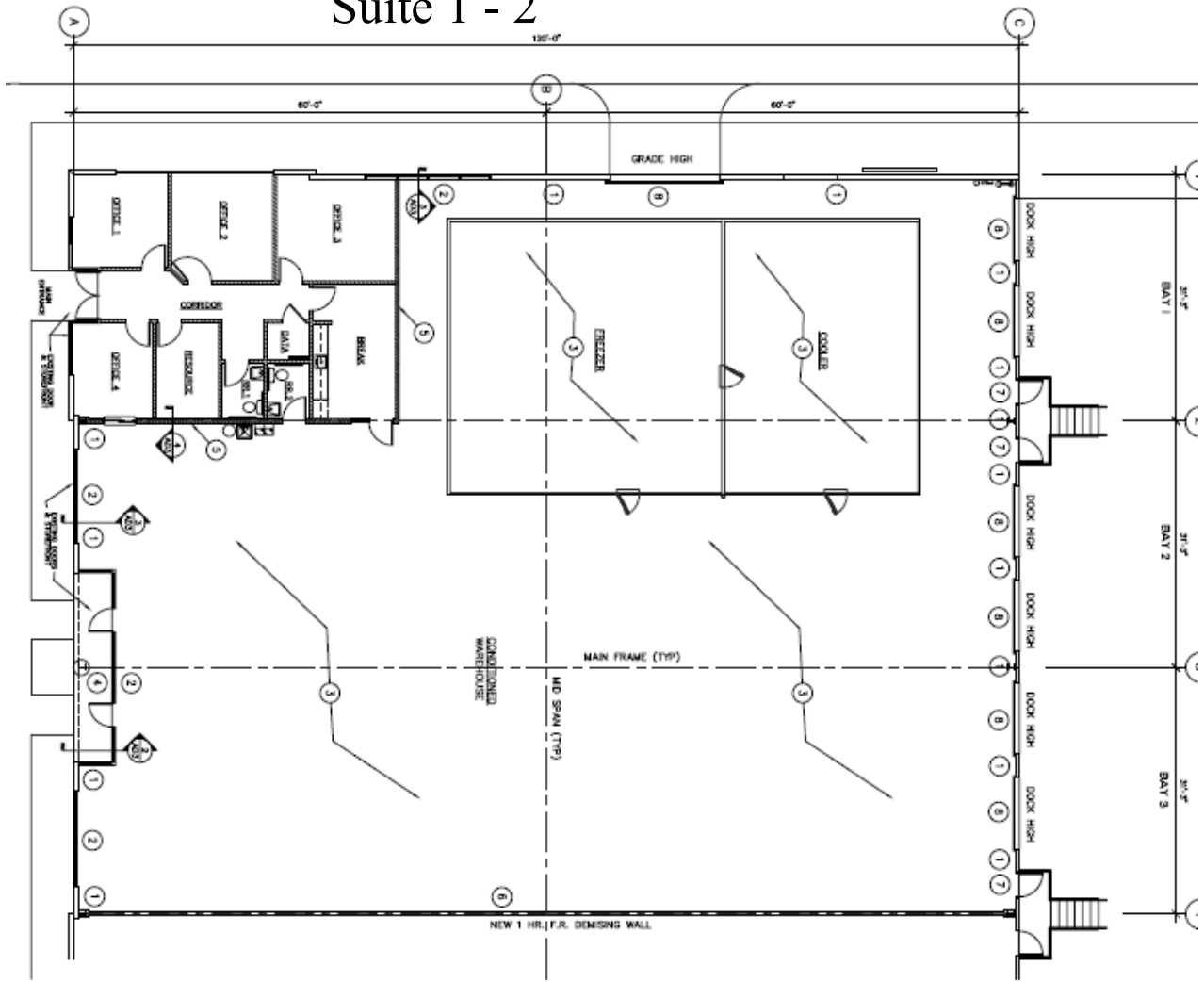
Suite 6 - 7

Suite Size: **7,500 ±SF**
Office: **1,300 ±SF**
A/C Warehouse: **6,200 ±SF**
Doors: **(2) Dock High
(1) Grade Level**

Ceiling Height: **22'-24'**
Orlando Zoning: **I-P**
Parking Ratio: **3 / 1,000 SF**
Power: **240A, 3 phase**
CAM: **\$6.04**



Suite 1 - 2



Suite 6 & 7

