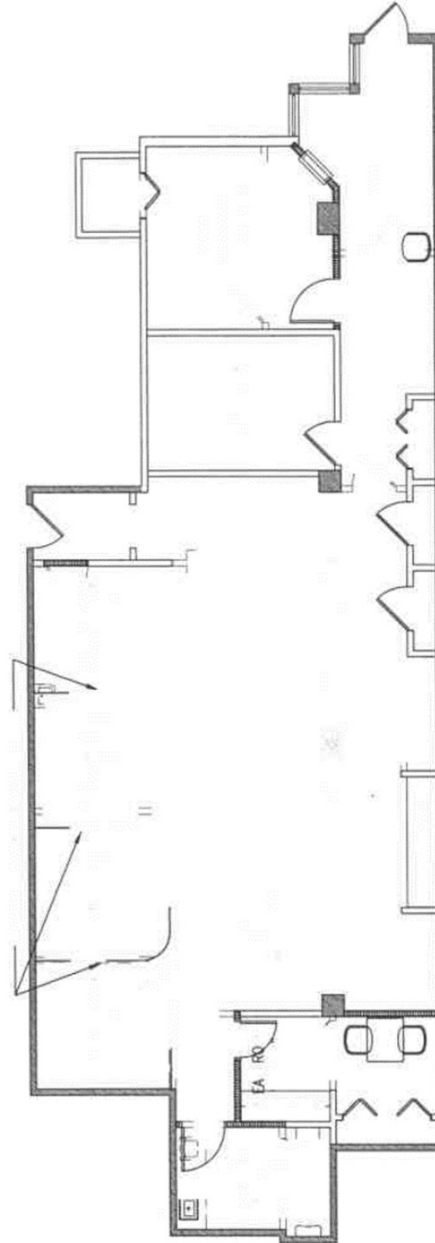


Tindecó Wharf
2809 Boston Street
Baltimore, MD 21224



RARELY AVAILABLE 1ST FLOOR @ TINDECO WHARF IN CANTON



A
V
A
I
L
A
B
L
E

F
O
R
S
U
B
L
E
A
S
E

FOR ADDITIONAL INFORMATION, CONTACT

DOUGLAS KAUFMAN

410.952.3290

dkaufman@agmcommercial.com

AGM Commercial Real Estate Advisors 921 E. Fort Avenue, Suite 230 Baltimore, MD 21230 www.agmcommercial.com

Although information contained herein is from sources deemed reliable, such information has not been verified and is submitted subject to errors, omissions, change of price, withdrawal or further change without notice. We include projections, opinion, assumptions or estimates for example only, and they may not represent current or future performance of the property. You, along with your tax and legal advisors, should conduct your own investigation of the property and transaction.