

# NOW LEASING!

## LAND TITLE BUILDING

100 SOUTH BROAD STREET | PHILADELPHIA, PA 19110

The Land Title Building comprises 365,000 square feet of office space on 22 floors. The building was designed by famed American architect Daniel Burnham and constructed in 1898 as one of the first high-rise office towers in Philadelphia. Today, 100 S Broad serves as an established Class B office building and home to businesses and organization of all sectors.



### AVAILABLE

<b>7TH:</b>	1,104	SF
<b>11TH:</b>	4,128	SF
<b>11TH:</b>	1,459	SF
<b>18TH:</b>	9,400	SF
<b>19TH:</b>	1,298	SF

### RENTAL RATE

\$25.50/SF

### BUILDING HIGHLIGHTS

- Central location, historic address and landmark property
- 24 hour security guard
- Onsite maintenance and management office
- Custom office space
- Steps from public transportation: Broad Street Line, Market-Frankford Line, bus routes, and parking.
- Onsite US Post Office
- Onsite deli serving breakfast and lunch

### NEIGHBORS

- The Union League of Philadelphia
- The Sporting Club at the Bellevue
- The Ritz-Carlton
- City Hall
- The Capital Grille



M.S. FOX REAL ESTATE GROUP

**215.568.8000**

Suite 1410, 1628 JFK Boulevard,  
Philadelphia, PA 19103

[www.msfoxrealestate.com](http://www.msfoxrealestate.com)

**Michael Fox** | 215.603.7789 | [mfox@msfoxre.com](mailto:mfox@msfoxre.com)

**Brett Fox** | 215.760.8488 | [bfox@msfoxre.com](mailto:bfox@msfoxre.com)

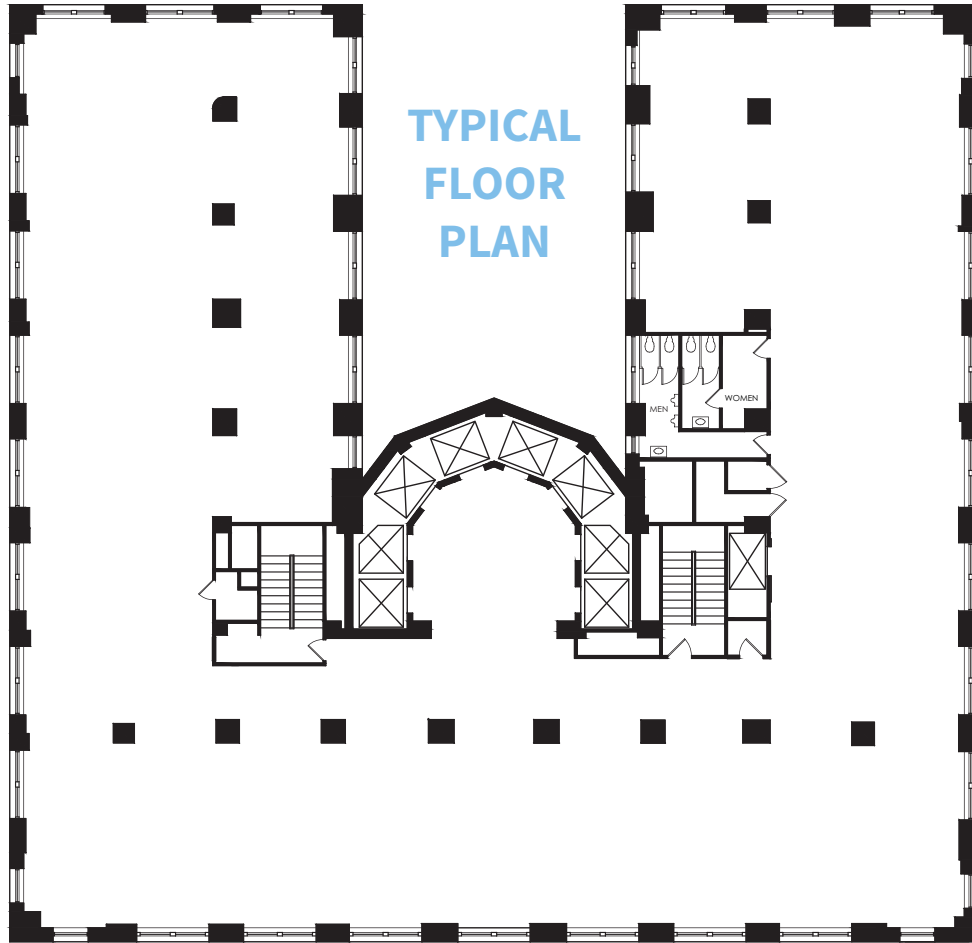
**Mitchell Fox** | 215.264.4751 | [mitchfox@msfoxre.com](mailto:mitchfox@msfoxre.com)

The information contained herein is from other sources believed to be reliable. No independent investigation of the property or the information contained herein has been made, and no representation is made as to the accuracy or completeness thereof. This information is subject to errors, omissions, prior sale or lease, or withdrawal without notice.

NOW LEASING!

# LAND TITLE BUILDING

100 SOUTH BROAD STREET | PHILADELPHIA, PA 19110



**215.568.8000**

Suite 1410, 1628 JFK Boulevard,  
Philadelphia, PA 19103

[www.msfoxrealestate.com](http://www.msfoxrealestate.com)

**Michael Fox** | 215.603.7789 | [mfox@msfoxre.com](mailto:mfox@msfoxre.com)

**Brett Fox** | 215.760.8488 | [bfox@msfoxre.com](mailto:bfox@msfoxre.com)

**Mitchell Fox** | 215.264.4751 | [mitchfox@msfoxre.com](mailto:mitchfox@msfoxre.com)

The information contained herein is from other sources believed to be reliable. No independent investigation of the property or the information contained herein has been made, and no representation is made as to the accuracy or completeness thereof. This information is subject to errors, omissions, prior sale or lease, or withdrawal without notice.