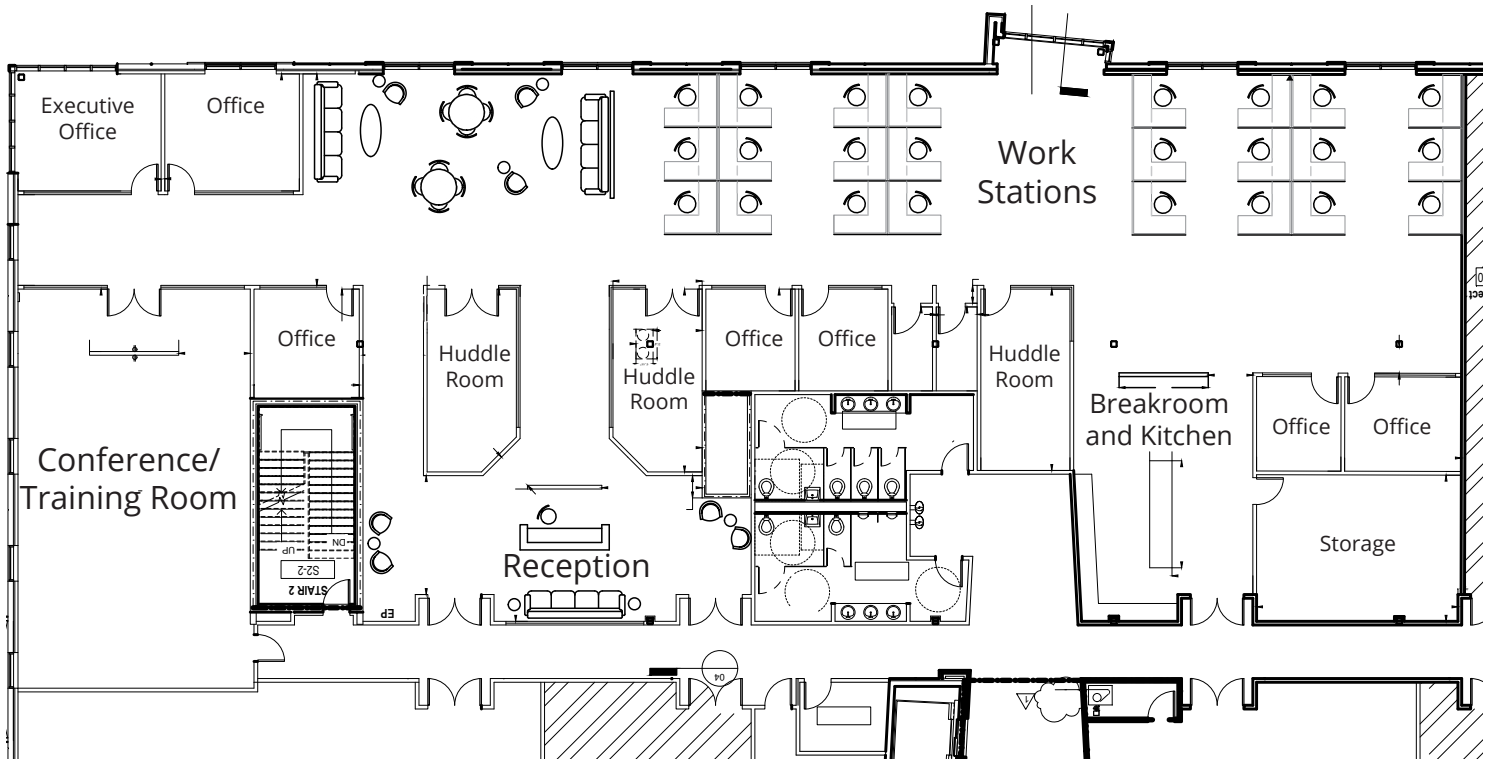


SUITE 230 - 10,433± SF



Lisa Bailey, SIOR, Principal
D 407 440 6645
C 407 595 9233
lisa.bailey@avisonyoung.com

Emily Zinaich, Senior Vice President
D 407 440 6641
C 407 230 8797
emily.zinaich@avisonyoung.com

135 W Central Blvd
Suite 700
Orlando, FL 32801

Office / Medical Space For Lease

529 E Crown Point Road
Ocoee, FL 34761

