

# LEASING NOW



## 9700 VILLAGE CENTER

GRANITE BAY  
CA 95746

OFFICE & EXECUTIVE SUITES  
BEAUTIFUL VIEWS IN QUIET GRANITE BAY

**High Speed Fiber Internet Available**



Jayna DeSoiza Byrnes | 916.638.3890 | [jayna@kcmre.com](mailto:jayna@kcmre.com)  
CA DRE #01941191

Brian Rabe | 916.601.0578 | [brabe@kcmre.com](mailto:brabe@kcmre.com)  
CA DRE #01743359

# 9700 VILLAGE CENTER

EXECUTIVE OFFICE SUITES | FOR LEASE

PROPERTY  
PHOTOS



## Highlights

- Medium and large private offices. Views available.
- Large glass windows
- Open conference room
- Large kitchenette/break room
- Quiet upscale neighborhood
- Large outdoor area overlooking private pond
- Five minutes to Roseville or Folsom
- Ten minutes to HWY 80

# 9700 VILLAGE CENTER

EXECUTIVE OFFICE SUITES | FOR LEASE

# SUITE PLAN 231-236



## LEASE RATE

Starting at  
\$900/month

Fiber high speed internet \$55/month.



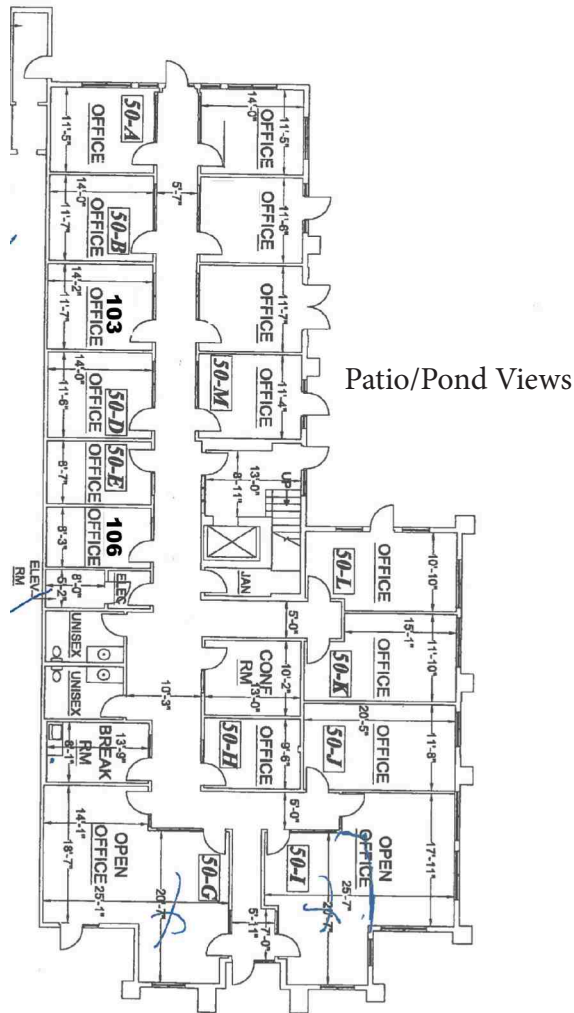
- Large private offices with windows
- Open lounge/conference area

- Large kitchenette/break room
- Brand new modern space plan

# 9700 VILLAGE CENTER

EXECUTIVE OFFICE SUITES | FOR LEASE

# EXECUTIVE SUITE PLAN



**LEASE RATE**

**Starting at  
\$800+/mo**

## Executive Suite Details & Highlights

- Move in ready executive offices
- Large common area conference room
- Large common area kitchenette / break room / newly remodeled restrooms

# 9700 VILLAGE CENTER LOCATION AERIAL

OFFICE SPACE | FOR LEASE

