

FOR LEASE

Seabreeze Plaza

30535-30725 U.S. Hwy 19 N, Palm Harbor, FL 34684



Property Highlights:

- **GLA:** 146,673 SF
- Anchored by a high volume Publix
- Located in one of the fastest growing counties in Florida
- Within commuter distance of Tampa & St. Petersburg
- Densely developed area with a variety of free standing retailers, small specialty centers, neighborhood & community centers & power centers
- **Join These Retailers:** Publix, Petco, Planet Fitness, and Vision Works
- **Traffic Counts:** U.S. Highway 19 - 75,937 ADT
Curlew Road - 33,000 ADT

	1 Mile	3 Mile	5 Mile
Total Population	13,008	100,020	201,429
Average HH Income	\$78,345	\$72,303	\$73,726



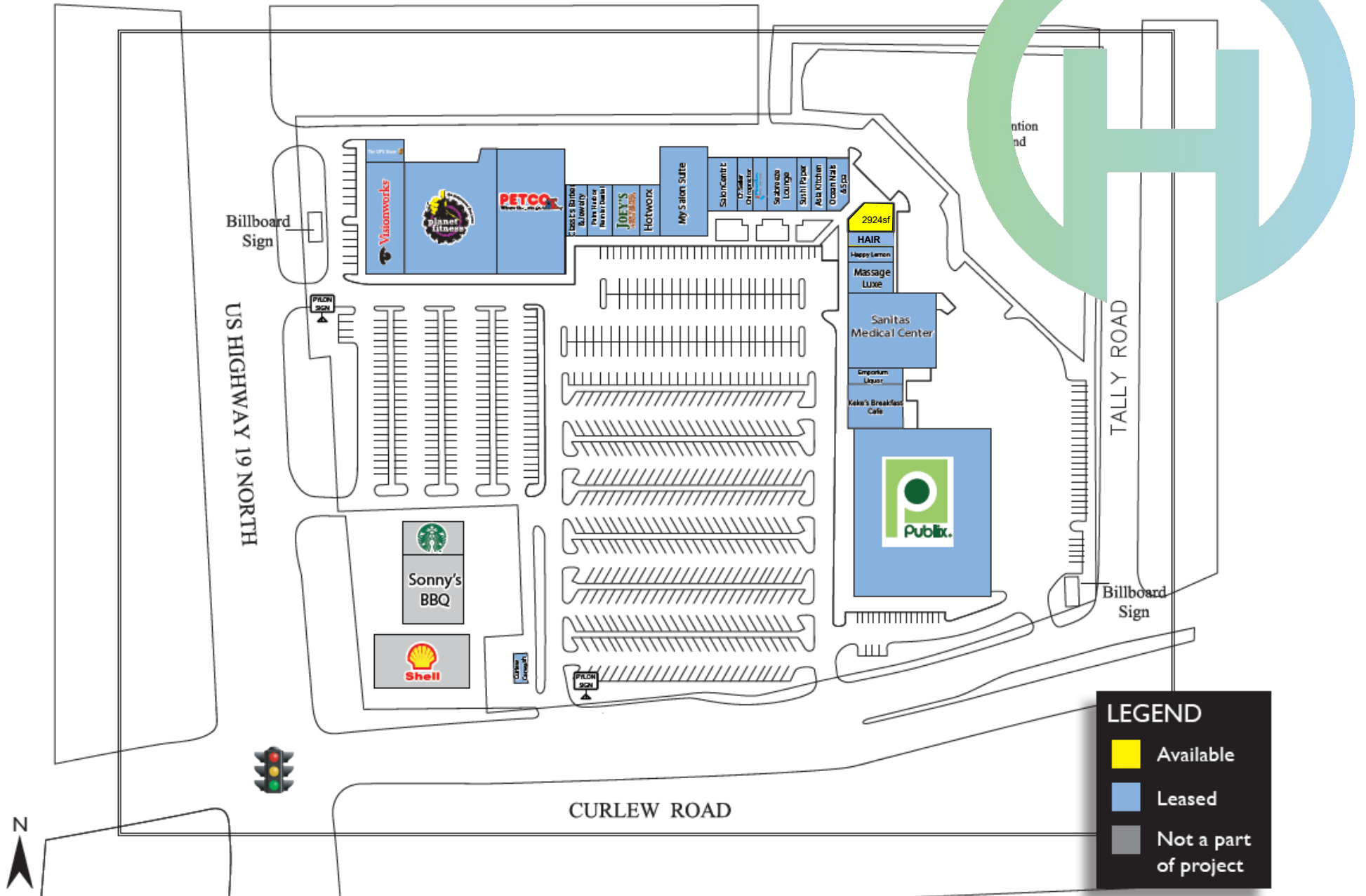
Justin Boudreau
D 813 413 6704
M 727 656 7914
justin@hybridcre.com

Sheila Suhar
D 813 498 1313
M 727 254 2005
sheila@hybridcre.com

119 North 11th Street, Suite 300B
Tampa, FL 33602
O 813 413 6700
hybridcre.com

Seabreeze Plaza

30535-30725 U.S. Hwy 19 N, Palm Harbor, FL 34684



Seabreeze Plaza

30535-30725 U.S. Hwy 19 N, Palm Harbor, FL 34684

Est. # of Customers Annually

 **317,000**

Est. # of Visits Annually

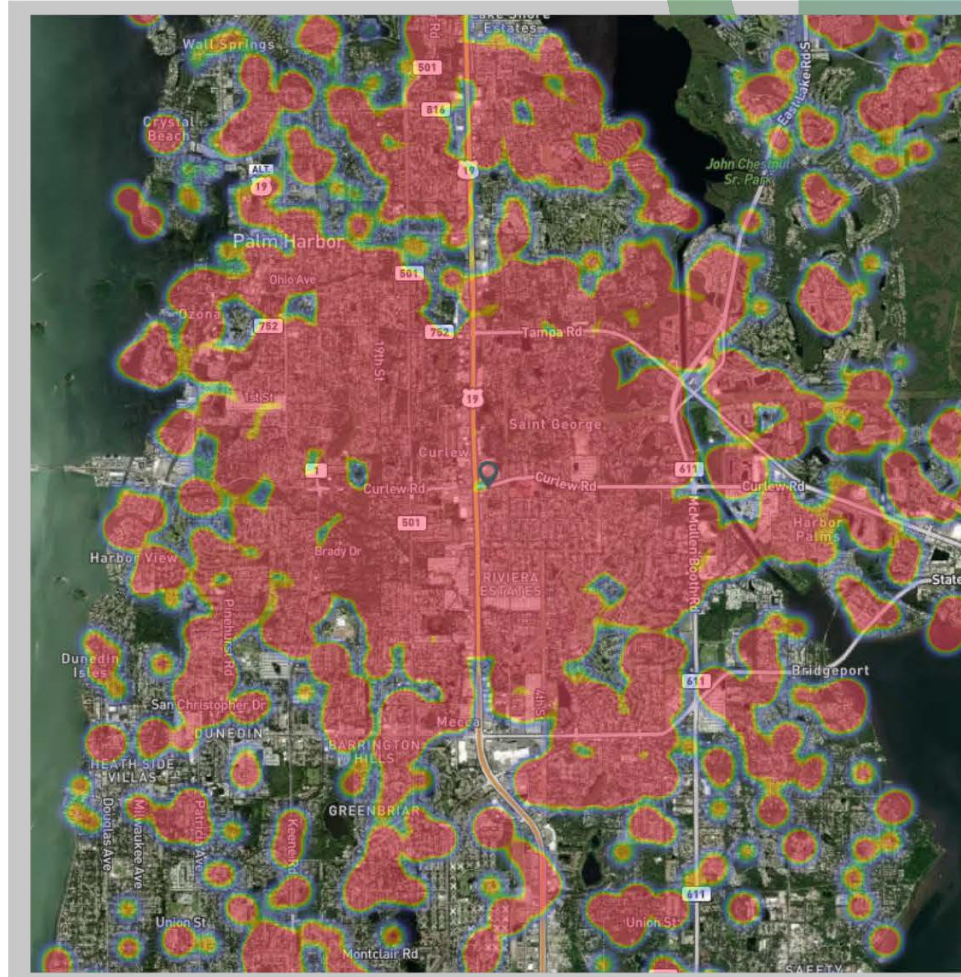
 **2.1 Million**

Avg. Length-of-Stay/ Visit

 **54 Min**

Avg. Visits / Customer

 **6.71**



Red, orange, and yellow colors represent the location of 60% of site visitors
Data provided by Placer Labs Inc. (www.placer.ai)

Seabreeze Plaza

30535-30725 U.S. Hwy 19 N, Palm Harbor, FL 34684

