

# BARRIO LOGAN WAREHOUSE FOR LEASE

1212 Cesar E Chavez Parkway | San Diego | CA | 92113



## HIGHLIGHTS

- ◆ ±6,000 SF Warehouse
- ◆ One ground level roll up door
- ◆ Three Phase Power
- ◆ 15 ft. Ceilings, 16 parking spaces
- ◆ 90% Warehouse
- ◆ Zoning: Barrio Logan Planned District—most industrial uses permitted
- ◆ Rate: \$1.75/ PSF + NNN (\$0.22)

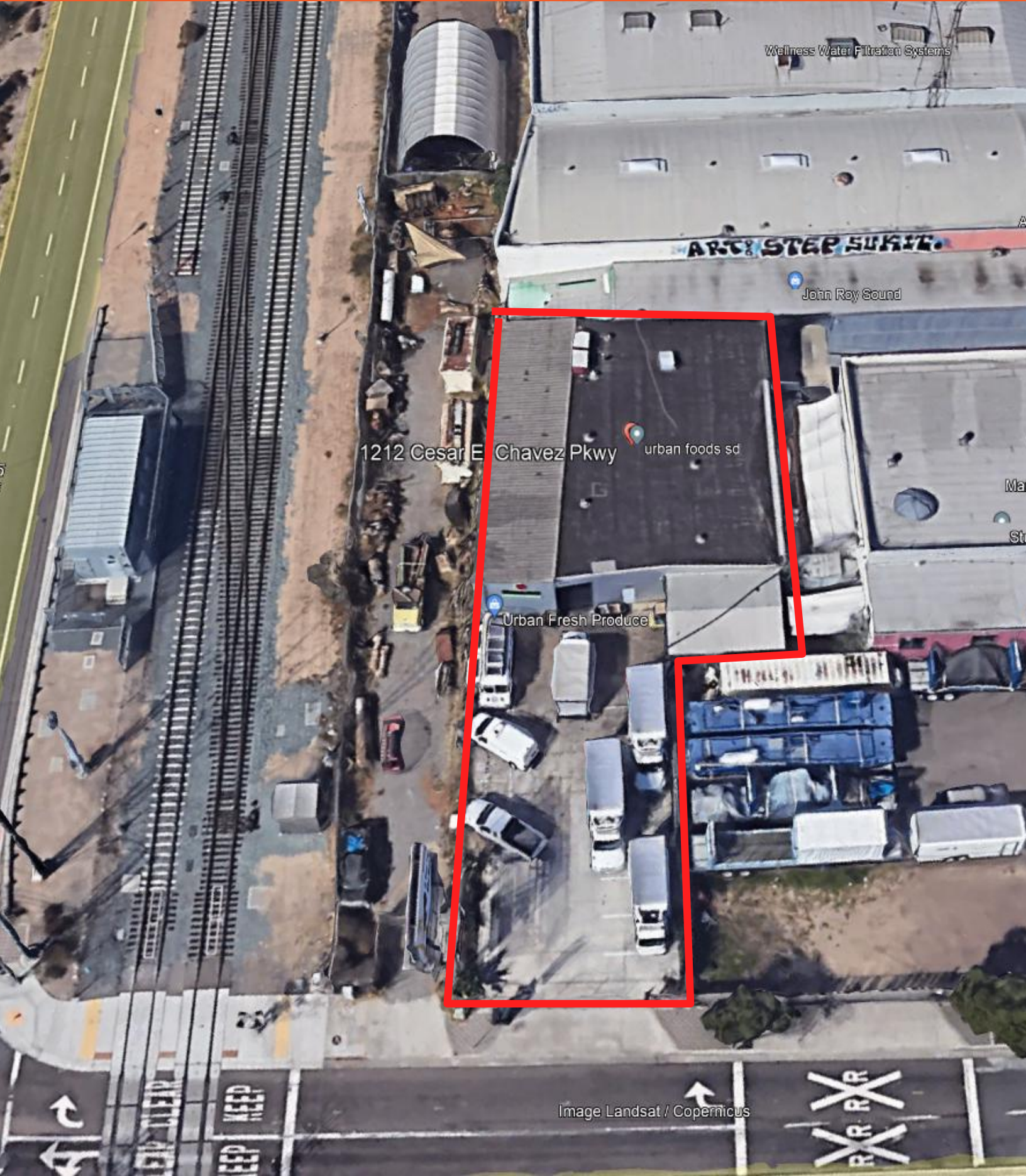


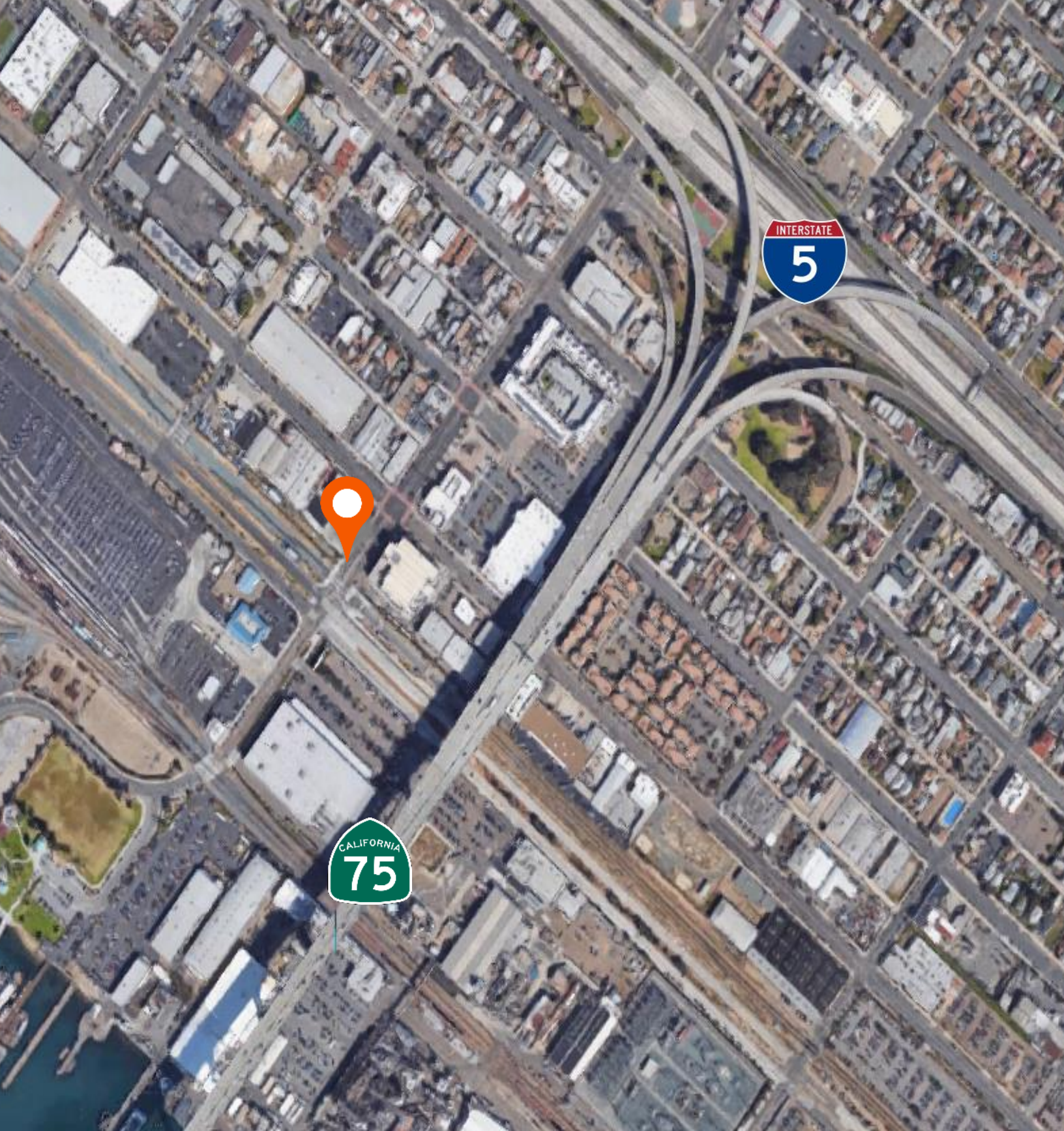
**Peter Wright**  
Lic #01846272  
619-243-8450

1495 Pacific Highway, Suite 450, San Diego, CA 92101 | (619) 243-8454  
[www.qfcre.com](http://www.qfcre.com)

The information contained herein has been obtained from sources considered to be reliable, but no guarantee of its accuracy is made by this company. In addition, no representation is made respecting zoning, condition of title, dimensions, or any matters of a legal or environmental nature. Such matters should be referred to legal counsel for determination. Terms and conditions are subject to change without prior notice .

# OVERVIEW





**Peter Wright**  
Lic #01846272  
619-243-8450  
pwright@qfcre.com

1495 Pacific Highway, Suite 450, San Diego, CA 92101 | (619) 243-8454  
[www.qfcre.com](http://www.qfcre.com)

The information contained herein has been obtained from sources considered to be reliable, but no guarantee of its accuracy is made by this company. In addition, no representation is made respecting zoning, condition of title, dimensions, or any matters of a legal or environmental nature. Such matters should be referred to legal counsel for determination. Terms and conditions are subject to change without prior notice. Subject to errors and omissions.