

— 644  
DALTON AVENUE  
KINGSTON, ONTARIO



**OFFICE FOR LEASE**



**ALEX ADAMS**

*Sales Representative*  
aadams@rtcr.com  
613-384-1997 ext 15



**VIOLET DERBYSHIRE**

*REALTOR®*  
violetderbyshire@gmail.com  
613-484-4993

# 644 DALTON AVENUE

## DETAILS

**ADDRESS:** 644 Dalton Avenue, Kingston, ON, K7M 8N7

**RENTABLE AREA:** 7,516 sf

**LEASE RATE:** \$19.50 psf Net

**ADDITIONAL RENT:** \$12.55 (2026 estimate)

**UTILITIES:** Separately metered and paid directly by the Tenant

**ELECTRICAL:** 600 Volt 225 Amp 3 phase

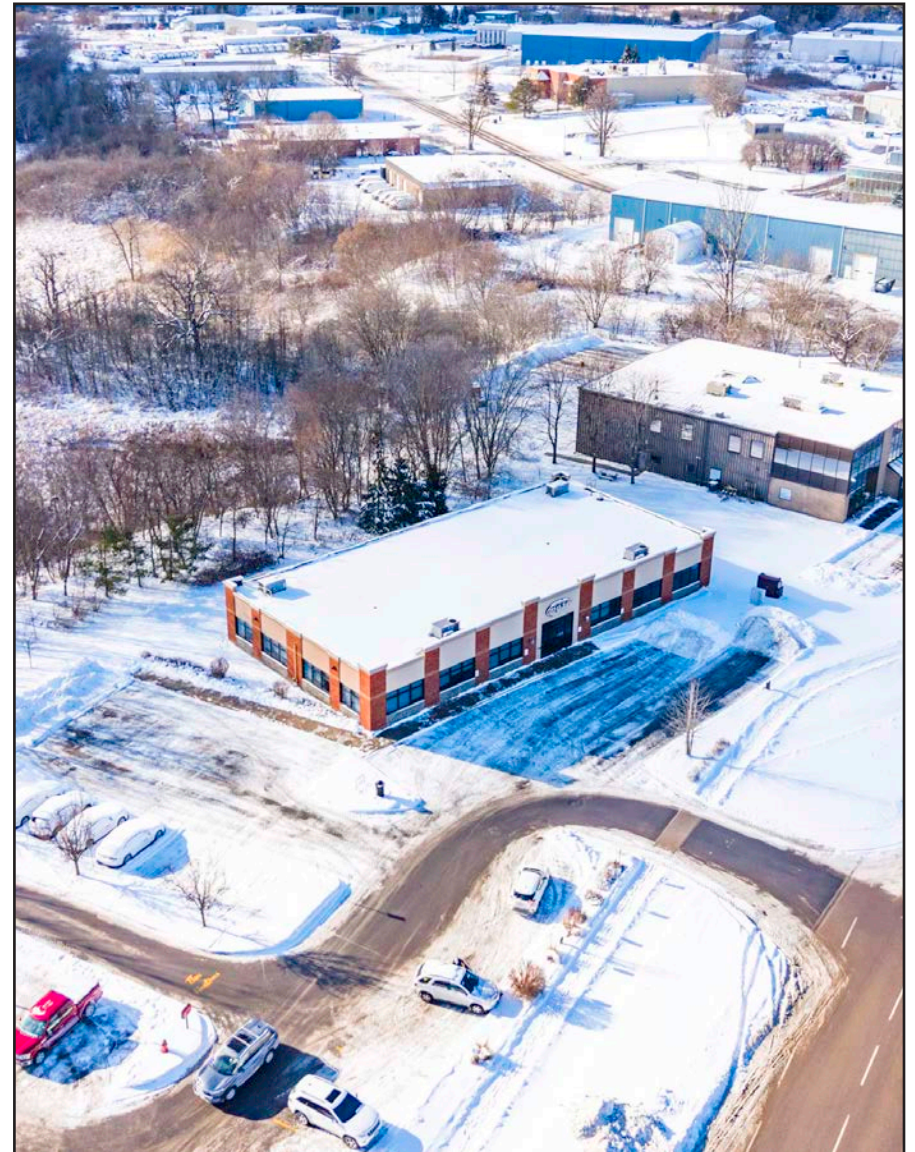
**HVAC:** Gas Forced Air

**ZONING:** M.389 Permitted uses include:  
Business/Professional Office  
Restaurant, Laboratories,  
Animal Hospitals

**PARKING:** Ample on site

**SIGNAGE:** Prominent location on building facade

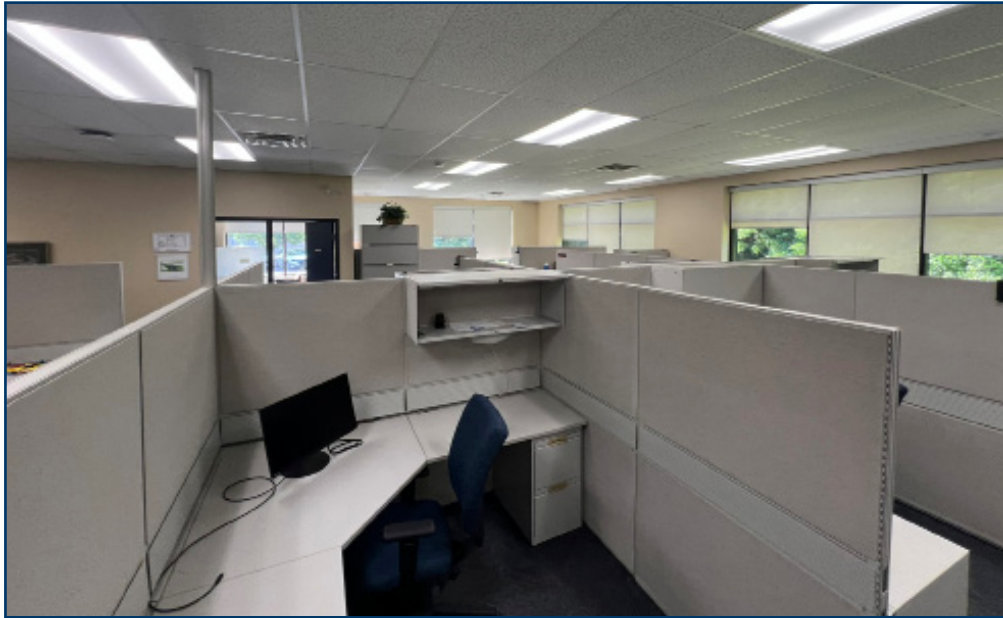
**POSSESSION:** Available May 1, 2026



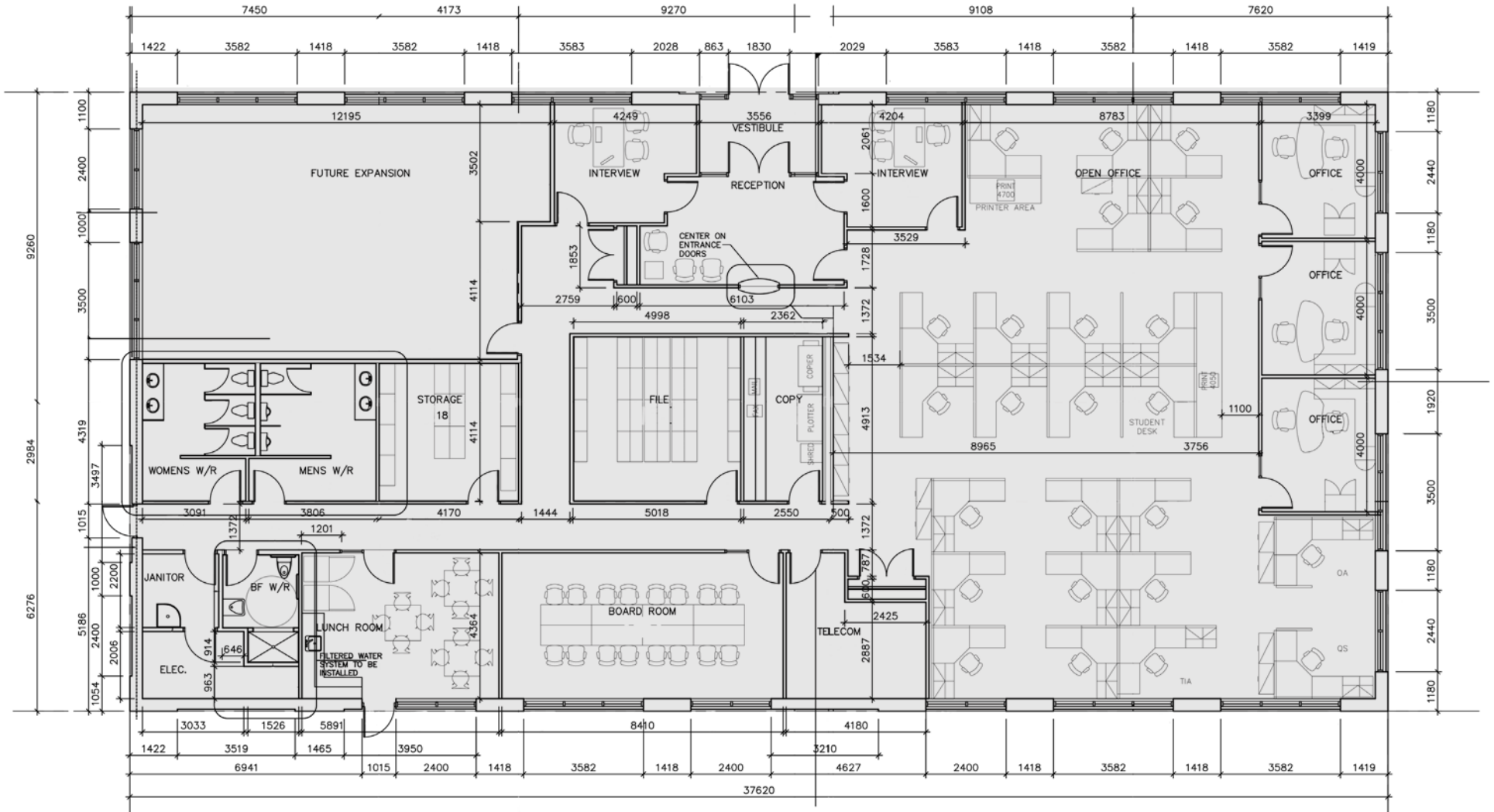
# 644 DALTON AVENUE



# 644 DALTON AVENUE



# 644 DALTON AVENUE



# 644 DALTON AVENUE

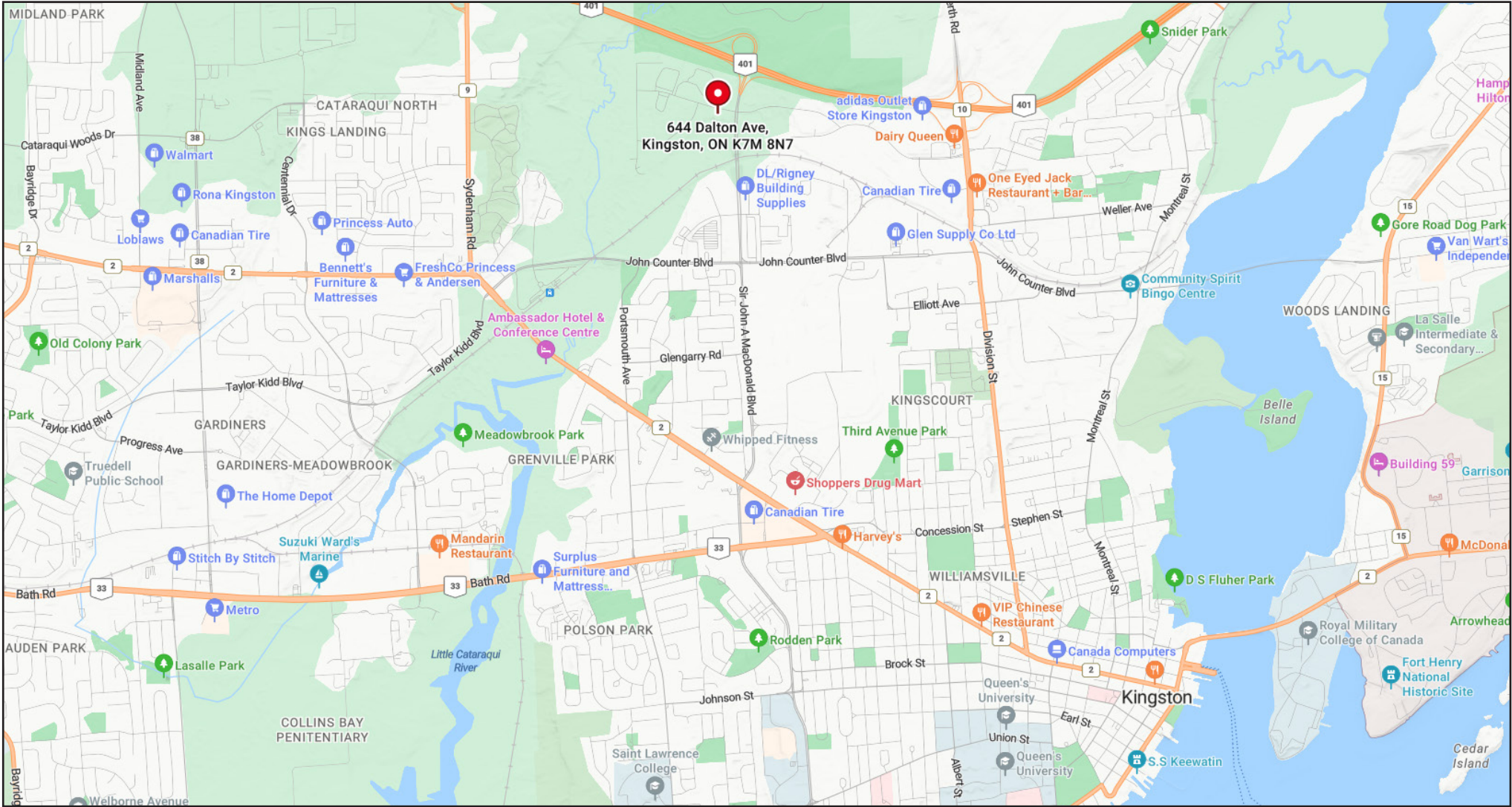


## CLYDE INDUSTRIAL PARK

- Clyde Industrial Park is located immediately south of Highway 401 and adjacent to Sir John A. Macdonald Boulevard.
- The business park accommodates manufacturing companies, logistics and warehousing, technology and innovation companies, construction and engineering firms, and bulk retail and wholesale supplies and distribution.
- Clyde Industrial Park's location provides a strategic advantage for businesses seeking to leverage transportation links, access regional economic opportunities, and benefit from the local infrastructure and resources.



# 644 DALTON AVENUE



CONTACT:



**ALEX ADAMS**

Sales Representative  
aadams@rtcr.com  
613-384-1997 ext 15



**VIOLET DERBYSHIRE**

REALTOR®  
violetderbyshire@gmail.com  
613-484-4993