

For Lease  
**±1,681-9,352 SF**  
Office Space



## Cypress Court

6360 NW 5<sup>th</sup> Way  
Fort Lauderdale, FL 33309

### Property Features

- Newly renovated common areas, including new finishes, flooring, and updated restrooms
- 24-hour keycard access
- Ample parking
- Excellent location in between the Florida Turnpike and I-95
- Easy access to Fort Lauderdale Executive Airport and Cypress Creek business district
- Close to plentiful retail, dining, and banking

### Key Highlights



Just west of I-95 and minutes to Florida's Turnpike



Recently upgraded common area finishes



Close to numerous conveniences and amenities

For more information:

**Lesley Sheinberg**, Managing Director  
[lsheinberg@mhcreal.com](mailto:lsheinberg@mhcreal.com)  
C: 561 254 7810 | O: 561 471 8000



# FOR LEASE: CYPRESS COURT, FORT LAUDERDALE

## ±1,681-9,352 SF Office Space Near I-95



### Available Space

Suite 200/201: 1,681-9,352 SF

Suite 202: 1,968 SF

Suite 310: 2,247 SF

### Rental Rate

\$17.75/SF NNN

\$14.00/SF CAM; Janitorial included; tenant pays electric

### Parking

Ample parking  
(5/1,000)



## FOR MORE INFORMATION:

Lesley Sheinberg, Managing Director

[lsheinberg@mhcreal.com](mailto:lsheinberg@mhcreal.com) | C: 561 254 7810 | O: 561 471 8000

NO WARRANTY OR REPRESENTATION, EXPRESS OR IMPLIED, IS MADE AS TO THE ACCURACY OF THE INFORMATION CONTAINED HEREIN, AND THE SAME IS SUBMITTED SUBJECT TO ERRORS, OMISSIONS, CHANGE OF PRICE, OR WITHDRAWAL WITHOUT NOTICE.



561 471 8000



1601 Forum Place, Suite 700  
West Palm Beach, FL 33401



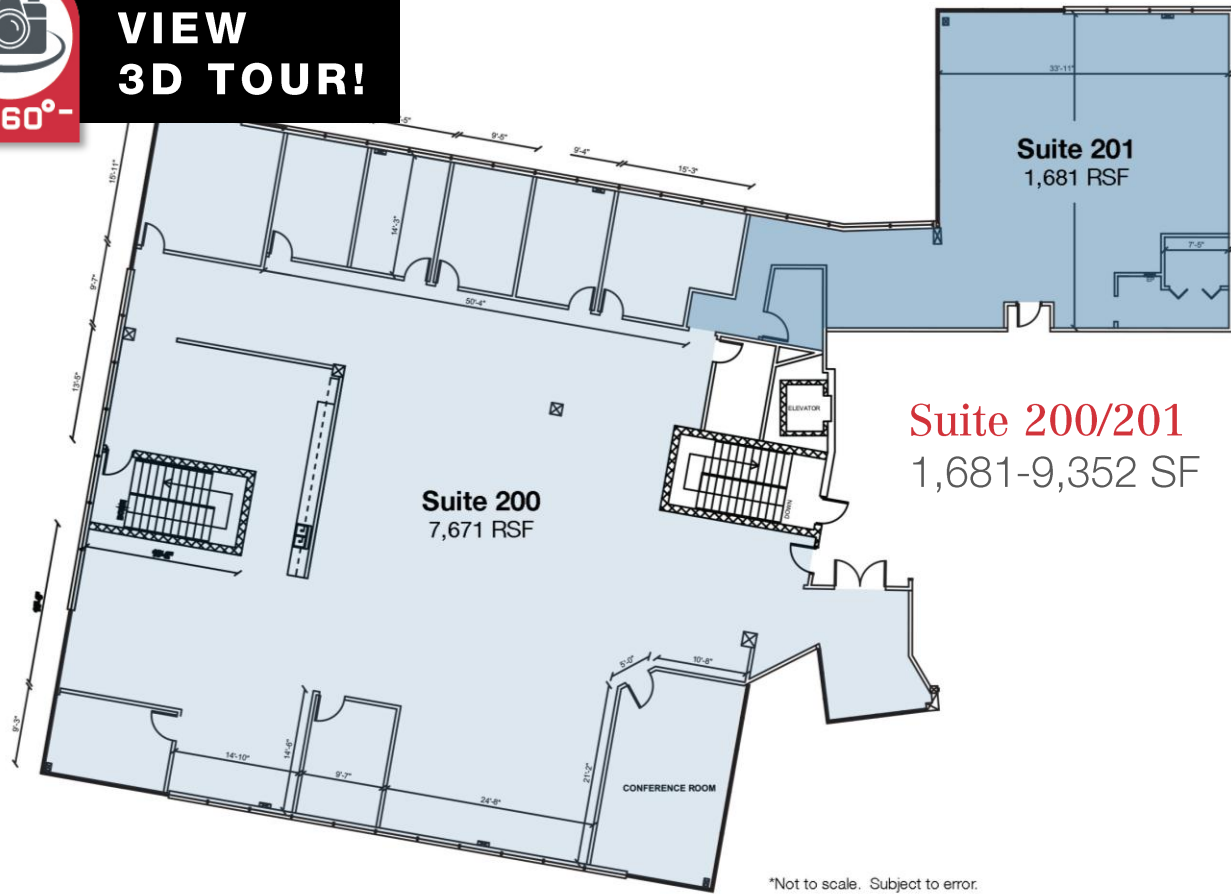
[www.mhcreal.com](http://www.mhcreal.com)

FOR LEASE: CYPRESS COURT, FORT LAUDERDALE

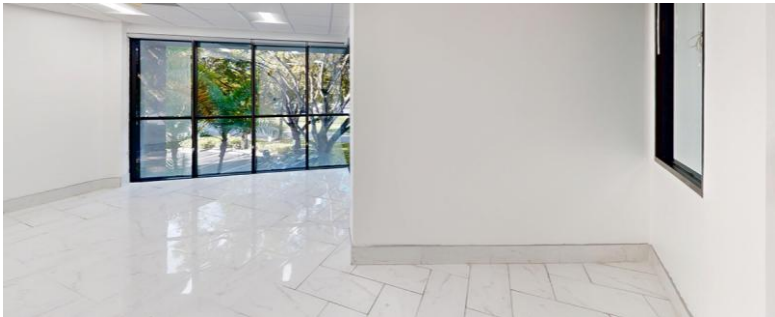
Flexible Office Space Available | Can Divide



VIEW  
3D TOUR!



Suite 200/201  
1,681-9,352 SF



FOR MORE INFORMATION:

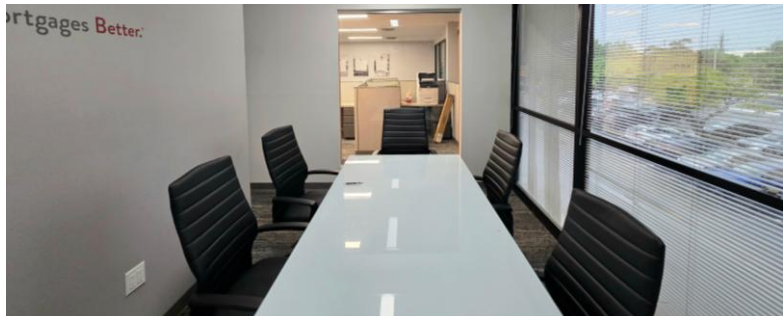
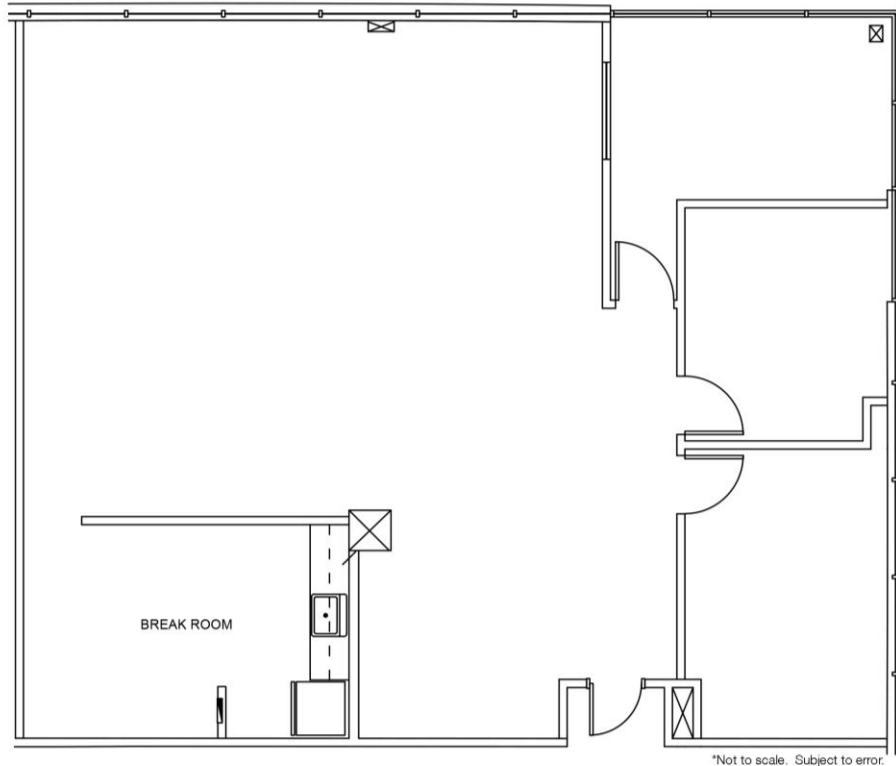
Lesley Sheinberg, Managing Director  
[lsheinberg@mhcreal.com](mailto:lsheinberg@mhcreal.com) | C: 561 254 7810 | O: 561 471 8000

**FOR LEASE: CYPRESS COURT, FORT LAUDERDALE**

**Move-In Ready Office Space Available**

**Suite 202**

1,968 SF



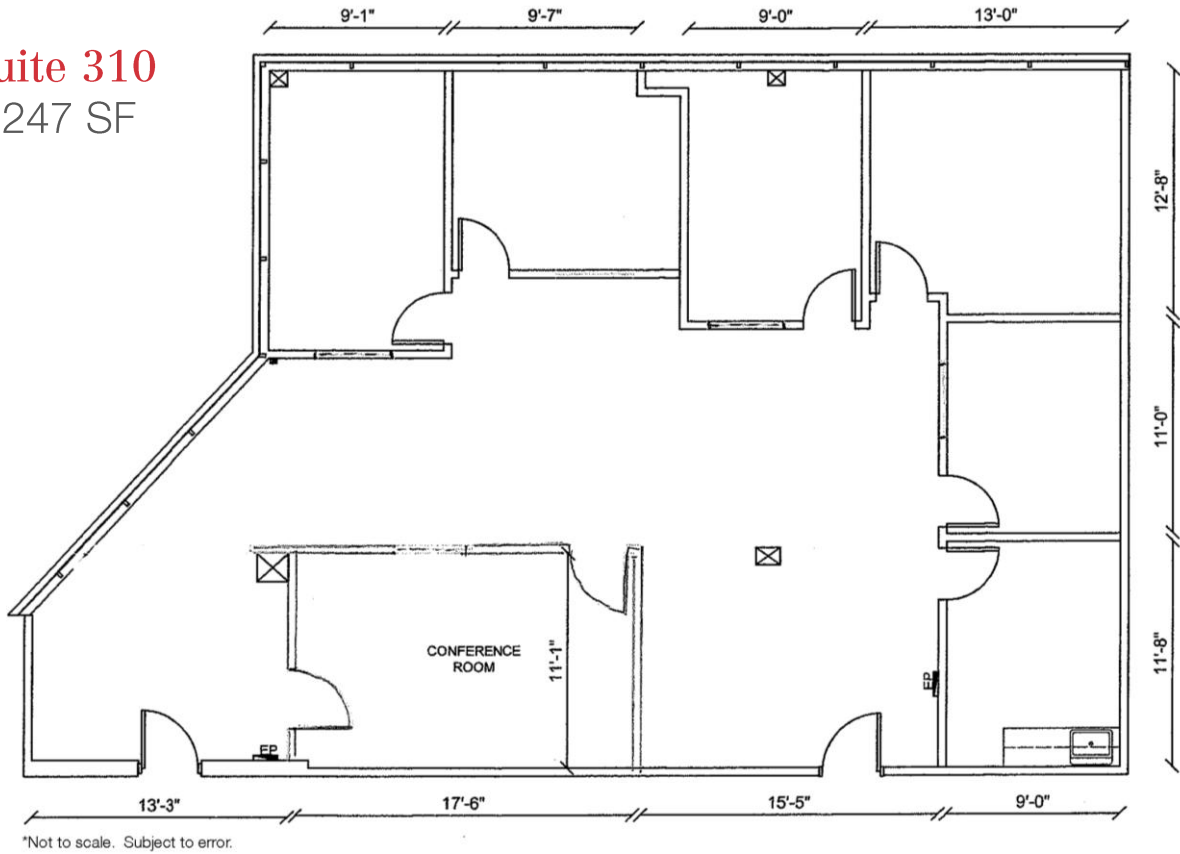
**FOR MORE INFORMATION:**

**Lesley Sheinberg**, Managing Director  
[lsheinberg@mhcreal.com](mailto:lsheinberg@mhcreal.com) | C: 561 254 7810 | O: 561 471 8000

FOR LEASE: CYPRESS COURT, FORT LAUDERDALE

Updated Office Space Available

Suite 310  
2,247 SF



 **561 471 8000**

Lesley Sheinberg, Managing Director  
[lsheinberg@mhcreal.com](mailto:lsheinberg@mhcreal.com) | C: 561 254 7810