

RIDDLE ASSOCIATES Inc.
Commercial Real Estate

OFFICE/WAREHOUSE CONDO FOR LEASE

801 Butler Street, Suite 9
Chesapeake, VA 23323



Property Details:

1,440 total square feet
Zoned M-1 (light industrial)
\$13.00 psf/ \$1,560 per month

First Floor

- Open Area (office/reception/etc.)
- Restroom
- Utility Closet
- Storage Closet
- Warehouse access w/ 10'x10' grade level garage door

Second Floor

- Kitchenette
- Office/storage room
- Mezzanine

EXCLUSIVELY OFFERED BY:

SHANNON A. STIDHAM | SStidham@riddleassociates.com | 757.256.7420

CALL TODAY TO SCHEDULE YOUR PRIVATE TOUR!

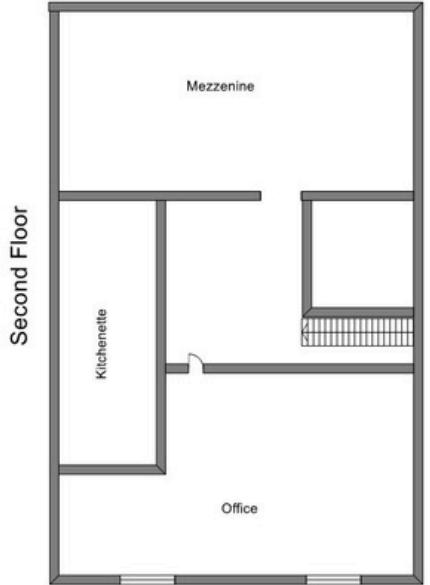
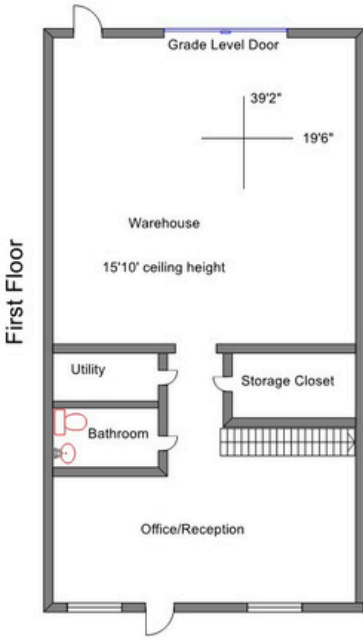
RIDDLE ASSOCIATES, INC.
Commercial Real Estate

“Real Estate Services Tailored to Your Needs”

The information presented in this marketing flyer is obtained from sources believed to be reliable, but is not warranted. This offer is subject to prior sale or lease, errors, omissions or withdrawal without notice.

530 Woodlake Circle • Suite 100 • Chesapeake, VA 23320 • www.riddleassociates.com

Floor Plan



RIDDLE ASSOCIATES, INC.

Commercial Real Estate

“Real Estate Services Tailored to Your Needs”

The information presented in this marketing flyer is obtained from sources believed to be reliable, but is not warranted. This offer is subject to prior sale or lease, errors, omissions or withdrawal without notice.

530 Woodlake Circle • Suite 100 • Chesapeake, VA 23320 • www.riddleassociates.com



RIDDLE ASSOCIATES, INC.

Commercial Real Estate

“Real Estate Services Tailored to Your Needs”

The information presented in this marketing flyer is obtained from sources believed to be reliable, but is not warranted. This offer is subject to prior sale or lease, errors, omissions or withdrawal without notice.

530 Woodlake Circle • Suite 100 • Chesapeake, VA 23320 • www.riddleassociates.com



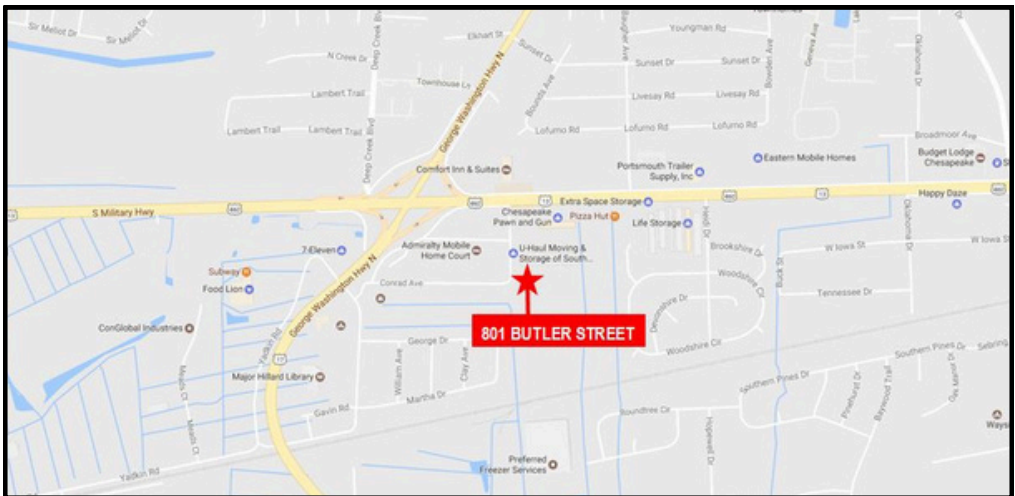
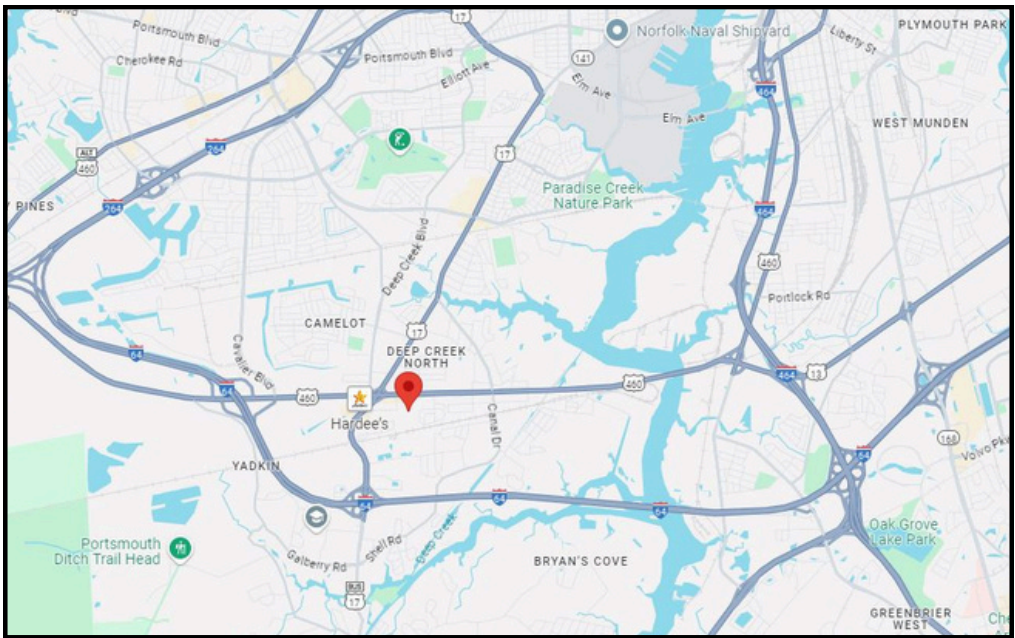
RIDDLE ASSOCIATES, INC.

Commercial Real Estate

“Real Estate Services Tailored to Your Needs”

The information presented in this marketing flyer is obtained from sources believed to be reliable, but is not warranted. This offer is subject to prior sale or lease, errors, omissions or withdrawal without notice.

530 Woodlake Circle • Suite 100 • Chesapeake, VA 23320 • www.riddleassociates.com



RIDDLE ASSOCIATES, INC.

Commercial Real Estate

“Real Estate Services Tailored to Your Needs”

The information presented in this marketing flyer is obtained from sources believed to be reliable, but is not warranted. This offer is subject to prior sale or lease, errors, omissions or withdrawal without notice.

530 Woodlake Circle • Suite 100 • Chesapeake, VA 23320 • www.riddleassociates.com