

SMITH | FRYER | WATTS

SMALL INDIVIDUAL PRIVATE OFFICE(S) AVAILABLE FOR LEASE



# BACCHUS OFFICE PARK

SHARED OFFICE SPACE FOR LEASE

**9070 IRVINE CENTER DRIVE, STE 105** | IRVINE SPECTRUM, CA

## CONTACT

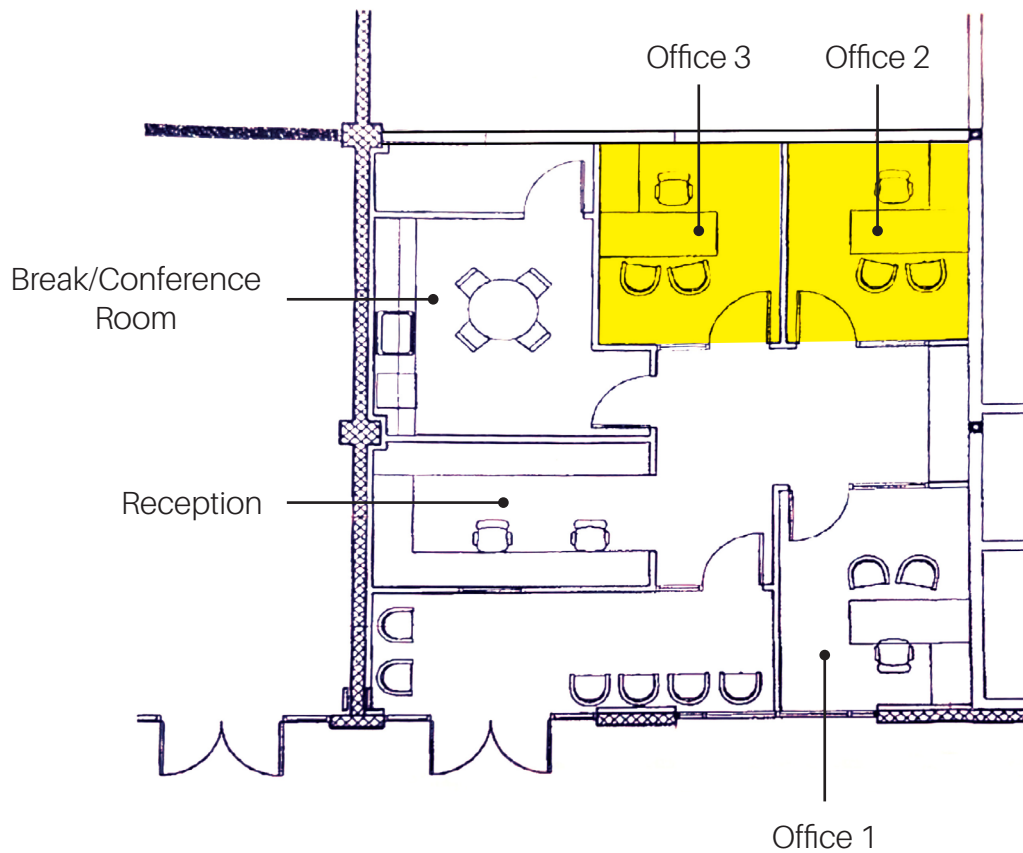
**DAVE SMITH**  
SENIOR VICE PRESIDENT  
LICENSE ID# **01195186**  
949.790.3134  
DSMITH@LEEIRVINE.COM

**MATT FRYER**  
SENIOR VICE PRESIDENT  
LICENSE ID# **01333079**  
949.790.3122  
MFRYER@LEEIRVINE.COM

**TRAVIS WATTS**  
SENIOR ASSOCIATE  
LICENSE ID# **01927498**  
949.790.3140  
TWATTS@LEEIRVINE.COM

# PROPERTY FEATURES

- Upscale Professional Co-Working Space
- Single/Multiple Offices and Workstations Available
- Shared Use of Conference Rooms, Reception, Kitchen, Restrooms, Etc.
- Month-to-Month or Longer Term
- Great Location w/ Immediate Access to All Major Freeways & Toll Roads
- Close to the Irvine Spectrum & Los Olivos Marketplace
- Call for Additional Details



# 9070 IRVINE CENTER DRIVE

IRVINE SPECTRUM, CALIFORNIA



**9070**  
IRVINE CENTER DRIVE  
IRVINE SPECTRUM, CA



 **LEE &  
ASSOCIATES**  
COMMERCIAL REAL ESTATE SERVICES  
SMITH | FRYER | WATTS

**DAVE SMITH**  
SENIOR VICE PRESIDENT  
LICENSE ID# 01195186  
949.790.3134  
DSMITH@LEEIRVINE.COM

**MATT FRYER**  
SENIOR VICE PRESIDENT  
LICENSE ID# 01333079  
949.790.3122  
MFRYER@LEEIRVINE.COM

**TRAVIS WATTS**  
SENIOR ASSOCIATE  
LICENSE ID# 01927498  
949.790.3140  
TWATTS@LEEIRVINE.COM