

FOR LEASE

Newly Renovated Office Space

2430 AMSLER STREET
TORRANCE, CA

ZACHARY CAINE
Associate Director
t 310-491-2089
zachary.caine@nmrk.com
CA RE Lic. #02062263

ERIC LASTITION
Executive Managing Director
t 310-491-2047
eric.lastition@nmrk.com
CA RE Lic. #01119647

GEOFF LUDWIG
Executive Managing Director
t 213-491-2077
geoff.ludwig@nmrk.com
CA RE Lic. #01232244

NEWMARK

2430 AMSLER STREET, TORRANCE, CA

Property Highlights

- Newly renovated office building with entire 2nd floor available
- Creative office space with open floor plan
- Newly striped on-site parking, plus abundant street parking
- Great Torrance location surrounded by restaurants and amenities within walking distance

Property Info



\$2.50/RSF, FSG

ASKING RATE



±3,527 SF

MAX CONTIGUOUS



Negotiable

TERM



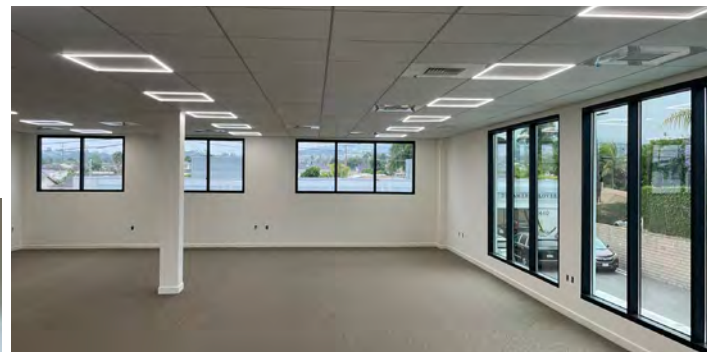
TBD

PARKING



2430 AMSLER STREET, TORRANCE, CA

Property Images



NEWMARK

2430 AMSLER STREET, TORRANCE, CA

Floor Plan

AVAILABILITY

SUITE 205 - 1,414 RSF

SUITE 206 - 2,113 RSF

CONTIGUOUS - 3,527 RSF

RENTAL RATE

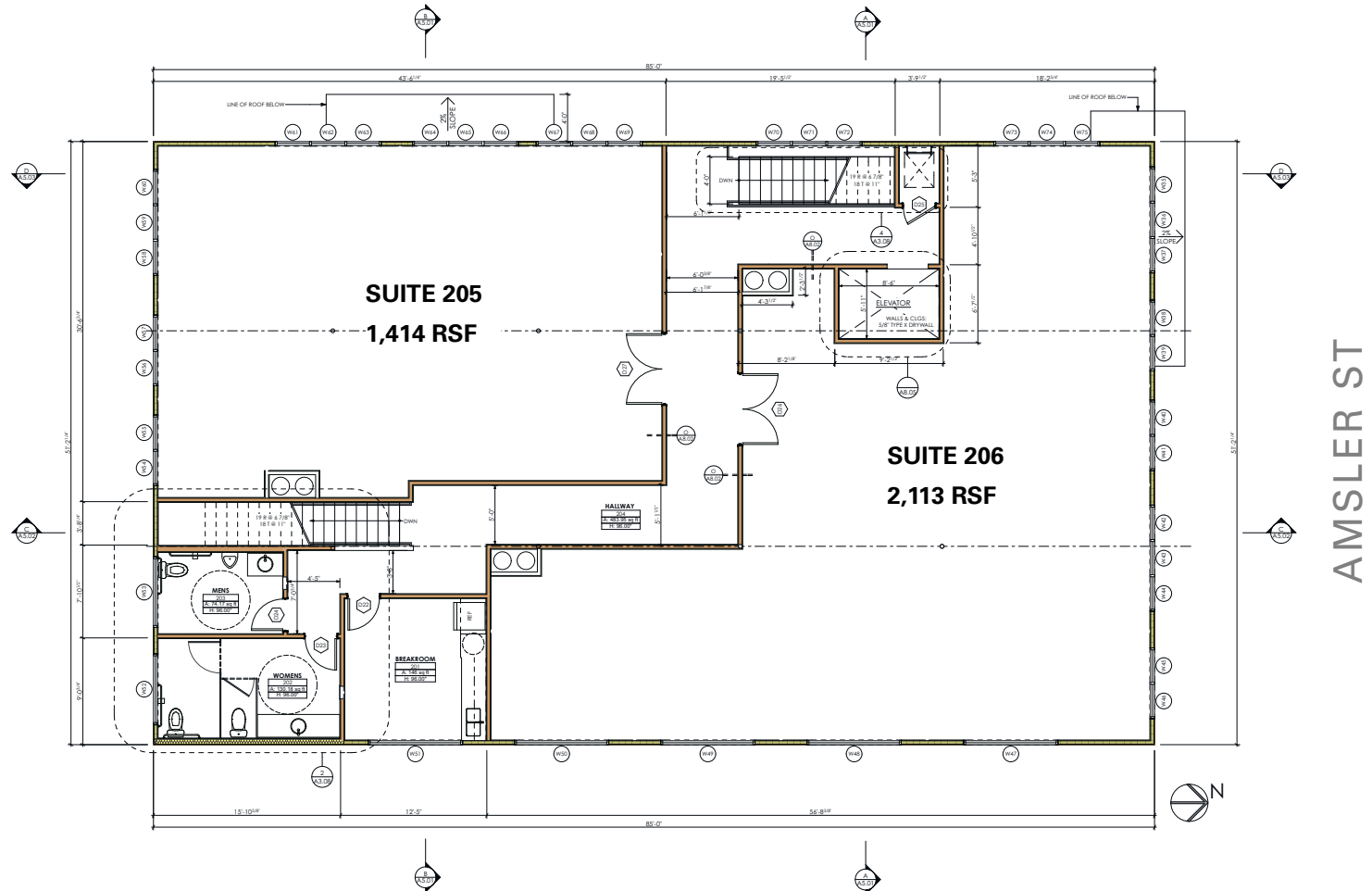
\$2.50 per Rentable SF,
Full Service Gross

LAYOUT

Bright, Open Space

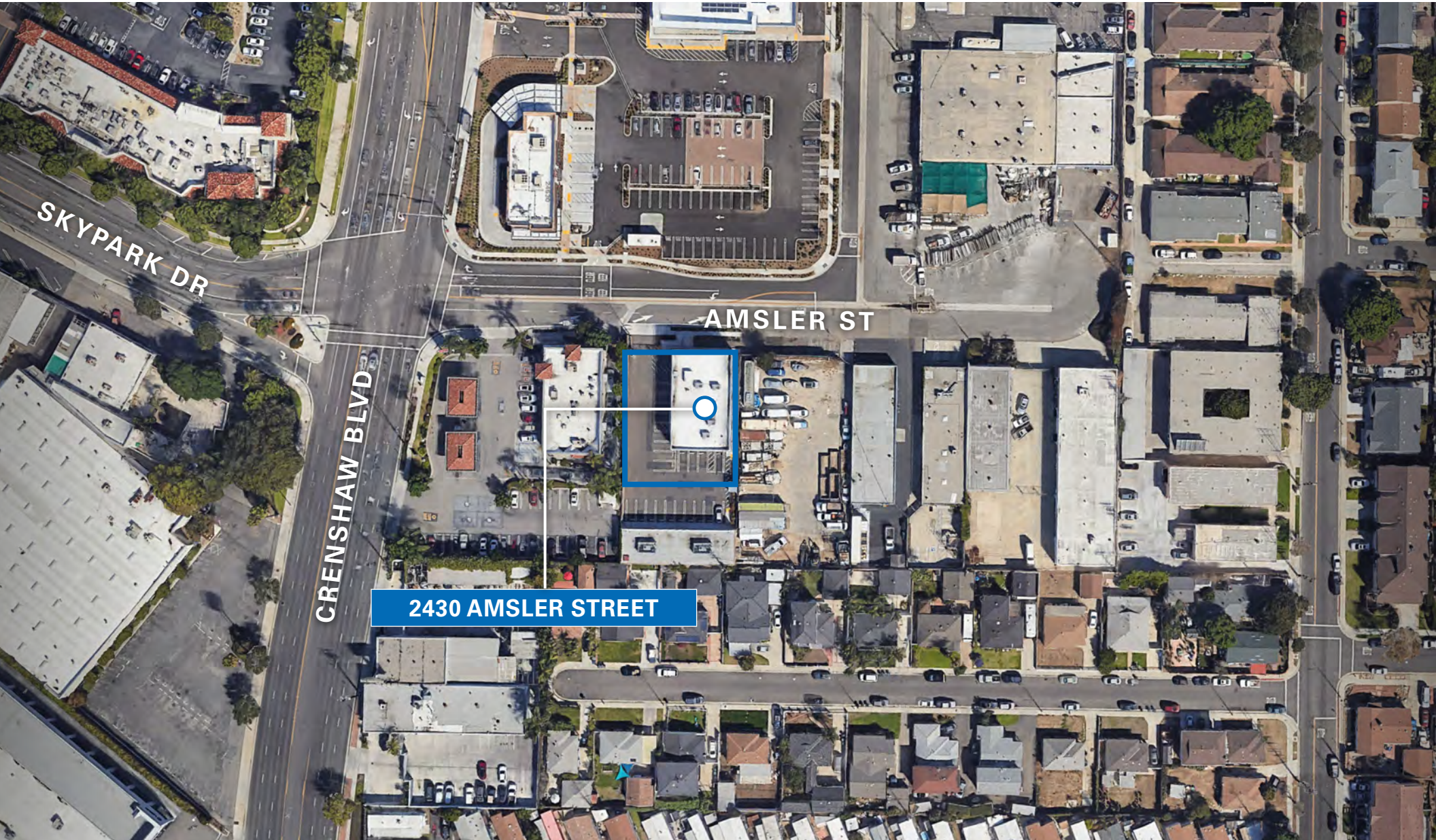
TERM

Negotiable



2430 AMSLER STREET, TORRANCE, CA

Subject Aerial



2430 AMSLER STREET



Mercedes-Benz

TORRANCE MEMORIAL
MEDICAL CENTER

LAND-ROVER

AutoNation Acura
South Bay

Zamperini Field

Pollo Loco

DCH
Toyota of
Torrance

Sams
CLUB

COSTCO
WHOLESALE

Jack
In the box

STAPLES

LOWE'S
Home Improvement Warehouse

BIG 5
SPORTING GOODS

VONS

PET SMART

Smart&Final

THE HOME
DEPOT

WING STOP

ISLANDS
Fine burgers & drinks

KOHL'S

HomeGoods

L&L
Hawaiian
Barbecue

MENDOCINO FARMS
sandwich market

Mini's
Cafe

4A
JAPANESE BBQ
Gyu-Kaku

jamba

Peets Coffee

CRENSHAW BLVD

CRENSHAW BLVD

BLAZE
ESTABLISHED 1985
PIZZA

california
PIZZA KITCHEN

SOUTH BAY
LEXUS

IN-N-OUT
BURGER

GEN
KOREAN BBQ HOUSE

TRADER
JOE'S

STONEFIRE
GRILL

McDonald's

Chick-fil-z

Sidocar

amc

Rubio's

2430 AMSLER STREET

BED BATH &
BEYOND

WHOLE
FOODS
MARKET

LOMITA BLVD

LOMITA BLVD

SKYPARK DR

PACIFIC COAST HWY

AMSLER ST

2430 AMSLER STREET, TORRANCE, CA



FOR MORE INFORMATION, PLEASE CONTACT:

ZACHARY CAINE

Associate Director
t 310-491-2089
zachary.caine@nmrk.com
CA RE Lic. #02062263

ERIC LASTITION

Executive Managing Director
t 310-491-2047
eric.lastition@nmrk.com
CA RE Lic. #01119647

GEOFF LUDWIG

Executive Managing Director
t 310-491-2077
geoff.ludwig@nmrk.com
CA RE Lic. #01232244

Corporate License #01355491

The information contained herein has been obtained from sources deemed reliable but has not been verified and no guarantee, warranty or representation, either express or implied, is made with respect to such information. Terms of sale or lease and availability are subject to change or withdrawal without notice.

NEWMARK

