



FOR LEASE

760 Lynnhaven Parkway Virginia Beach, VA

Ricky Anderson

Executive Vice President
+1 757 217 1892
ricky.anderson@colliers.com

150 West Main Street
Suite 1100
Norfolk, VA 23510
P: +1 757 490 3300



BUILDING FEATURES

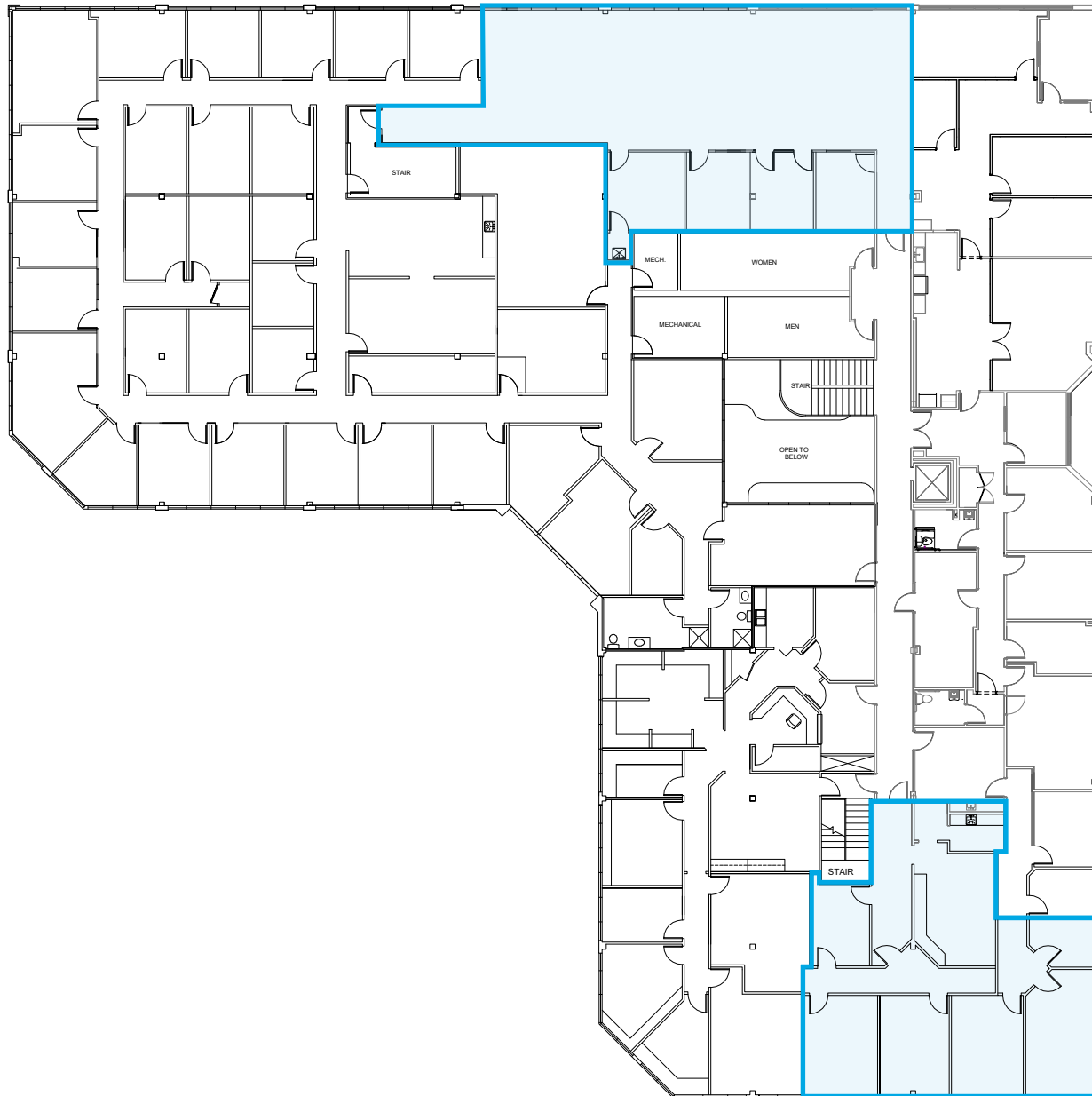
- Two story, ±38,907 RSF building
- Available Space:
 - Suite 203: ±2,615 RSF (available 6/1/26)
 - Suite 205: ±2,044 RSF
- Quality brick and glass construction
- Free and abundant parking
- Recently updated common areas
- Locally owned and professionally managed/maintained
- Centrally located in the Lynnhaven submarket of Virginia Beach
- Lease Rate: Negotiable



FLOOR PLAN

Second Floor

Suite 203
± 2,615 SF
(available 6/1/26)

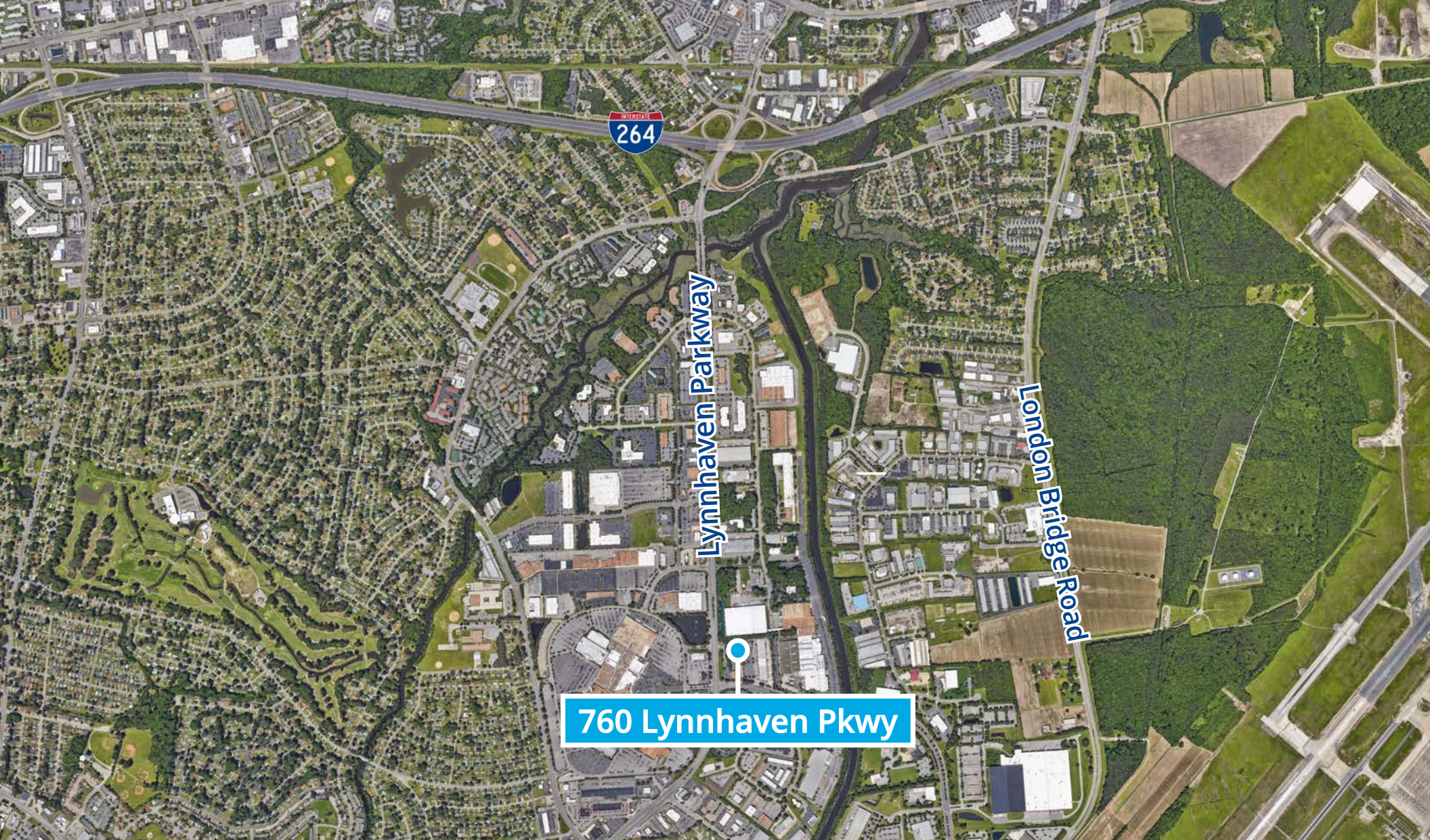


Suite 205
± 2,044 SF

760 Lynnhaven Parkway
Virginia Beach, VA

Lynnhaven Mall





Ricky Anderson

Executive Vice President

+1 757 217 1892

ricky.anderson@colliers.com

150 West Main Street

Suite 1100

Norfolk, VA 23510

P: +1 757 490 3300



This document has been prepared by Colliers International for advertising and general information only. Colliers International makes no guarantees, representations or warranties of any kind, expressed or implied, regarding the information including, but not limited to, warranties of content, accuracy and reliability. Any interested party should undertake their own inquiries as to the accuracy of the information. Colliers International excludes unequivocally all inferred or implied terms, conditions and warranties arising out of this document and excludes all liability for loss and damages arising there from. This publication is the copyrighted property of Colliers International and/or its licensor(s). ©2026. All rights reserved.