

Brittany Danahy, CCIM

302.227.0768

bdanahy@dsmre.com

# PLANTATIONS PROFESSIONAL

19405 PLANTATIONS ROAD, REHOBOTH BEACH, DE 19971

MEDICAL/GENERAL OFFICE SUITE FOR LEASE



18949 COASTAL HWY SUITE 304 \\\ REHOBOTH BEACH, DE 19971 \\\ \\\ DSMRE.COM

**PROPERTY DESCRIPTION**

**Last available office suite at Plantations Professional Park, Rehoboth Beach, DE!** Situated on the second floor, this versatile former Evolve Mortgage office space is comprised of 2,915 square feet. This gorgeously fit-out office space features a well-equipped breakroom/kitchen, a dedicated storage area and two restrooms, ensuring a seamless workflow for you and your team.

Situated on Plantations Road running parallel to Coastal Highway between Route 24 and Route 9, the Park offers ease of access and plenty of parking (85+ spaces). Plantations Professional Park has been well received with tenants such as Beebe Women's Health, Sylvan Learning Center, Black Diamond Financial, Coastal Gastroenterology & Wellness, Lifestance and more!

**PROPERTY DETAILS**

- **Available:** 2,915 SF (Suite 1-A: second floor)
- **Lease Rate:** \$23/SF
- **Lease Type:** NNN (\$3.75/SF Year 1)
- **Parking:** 85+ spaces

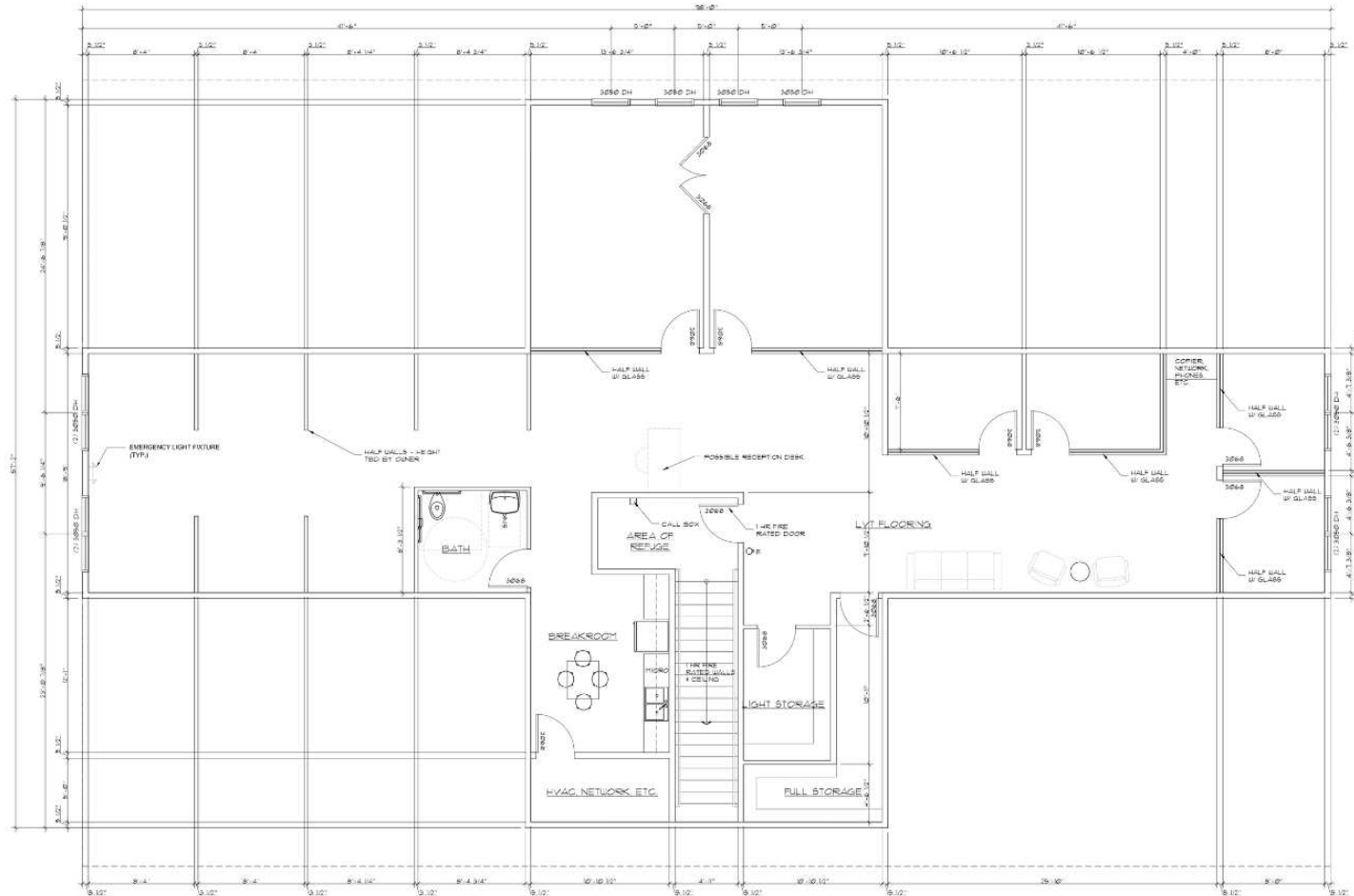
**PROPERTY HIGHLIGHTS**

- **Location:** Located parallel to Coastal Highway; easy access to Route 9/Route 24
- **Accessibility:** Easy access to local markets - Lewes, Georgetown, and Millsboro
- **Turnkey Office Space:** Suite features a professional, high-quality fit-out
- **Ideal Use:** Perfect for professional, medical, or financial services
- **Demographics:** Growing year-round population and an influx of professionals relocating to coastal Delaware fuel the demand for quality office spaces
- **Established Professional Park:** Join a diverse mix of well-regarded tenants, including Beebe Women's Health, Sylvan Learning Center, Black Diamond Financial, Coastal Gastroenterology & Wellness, Lifestance Thriving, and more



For More Information, Contact:

Brittany Danahy, CCIM  
bdanahy@dsmre.com  
302.227.0768 Office  
302.858.8843 Cell**DSM Commercial**  
Real Estate Services  
18949 Coastal Hwy Suite 304  
Rehoboth Beach, DE 19971  
dsmre.com



SECOND FLOOR PLAN  
SCALE: 1/4" = 1'-0"  
2,215 SF RENTABLE

For More Information, Contact:

Brittany Danahy, CCIM  
bdanahy@dsmre.com  
302.227.0768 Office  
302.858.8843 Cell

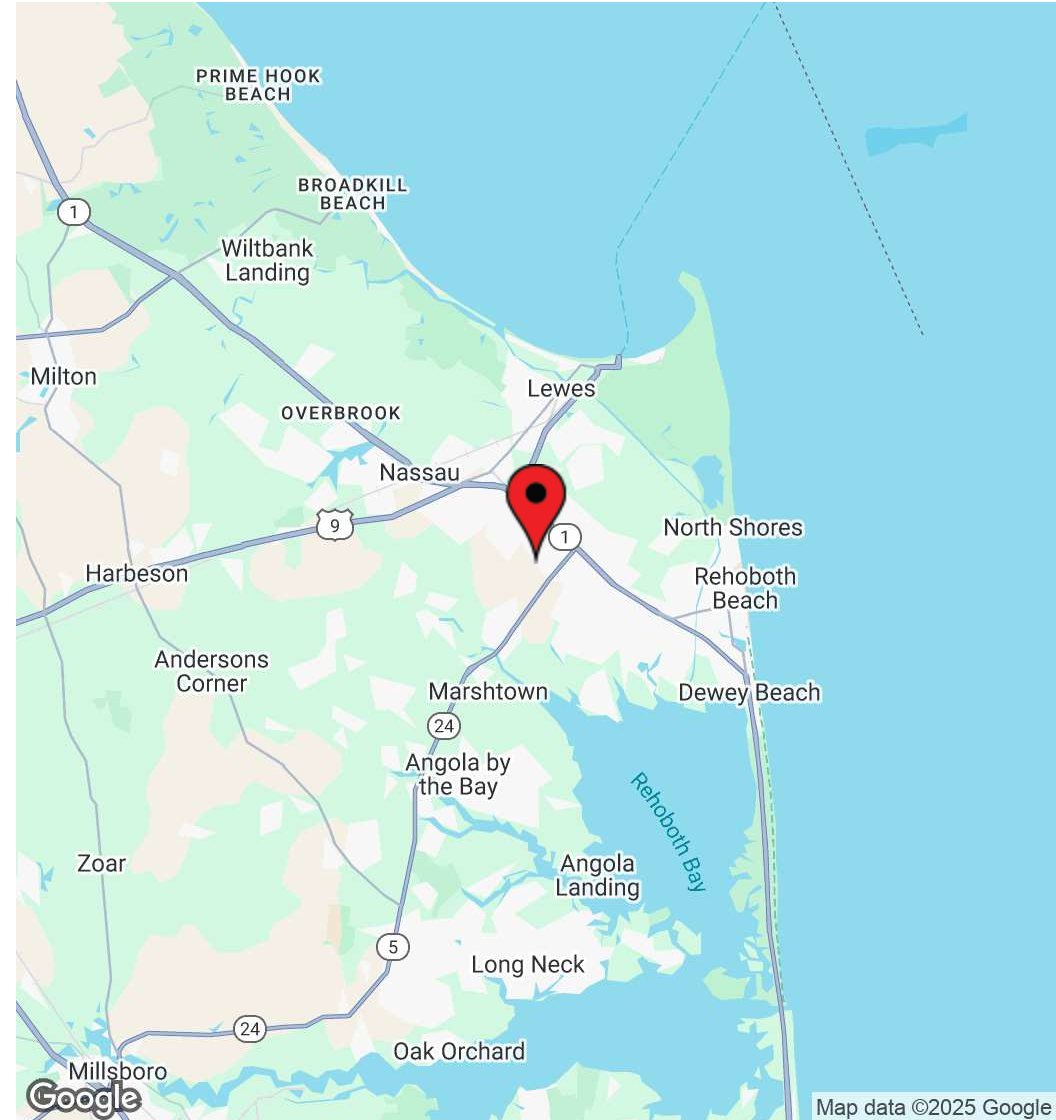
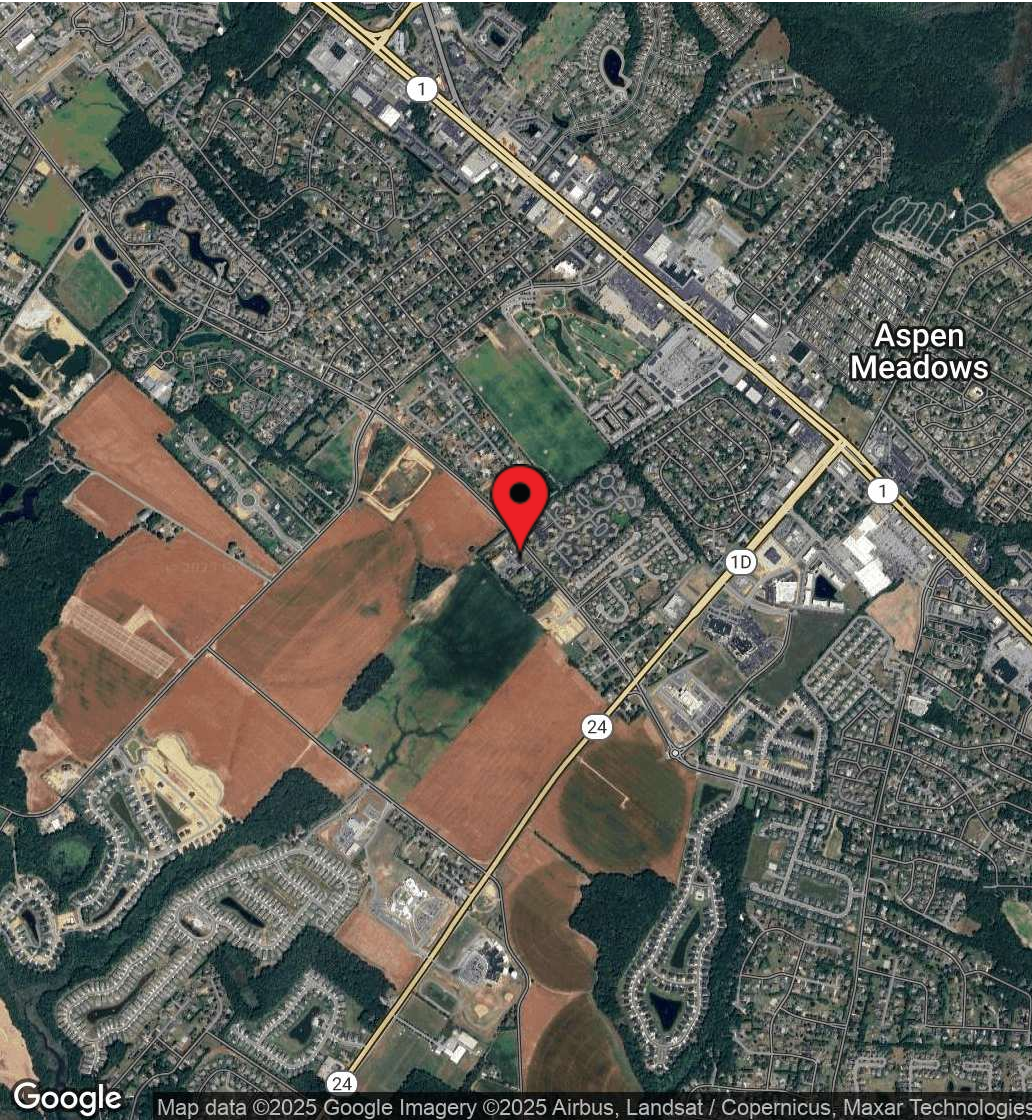
**DSM Commercial**  
Real Estate Services  
18949 Coastal Hwy Suite 304  
Rehoboth Beach, DE 19971  
dsmre.com



For More Information, Contact:

Brittany Danahy, CCIM  
bdanahy@dsmre.com  
302.227.0768 Office  
302.858.8843 Cell

**DSM Commercial**  
Real Estate Services  
18949 Coastal Hwy Suite 304  
Rehoboth Beach, DE 19971  
dsmre.com



For More Information, Contact:

Brittany Danahy, CCIM  
bdanahy@dsmre.com  
302.227.0768 Office  
302.858.8843 Cell

**DSM Commercial**  
Real Estate Services  
18949 Coastal Hwy Suite 304  
Rehoboth Beach, DE 19971  
dsmre.com

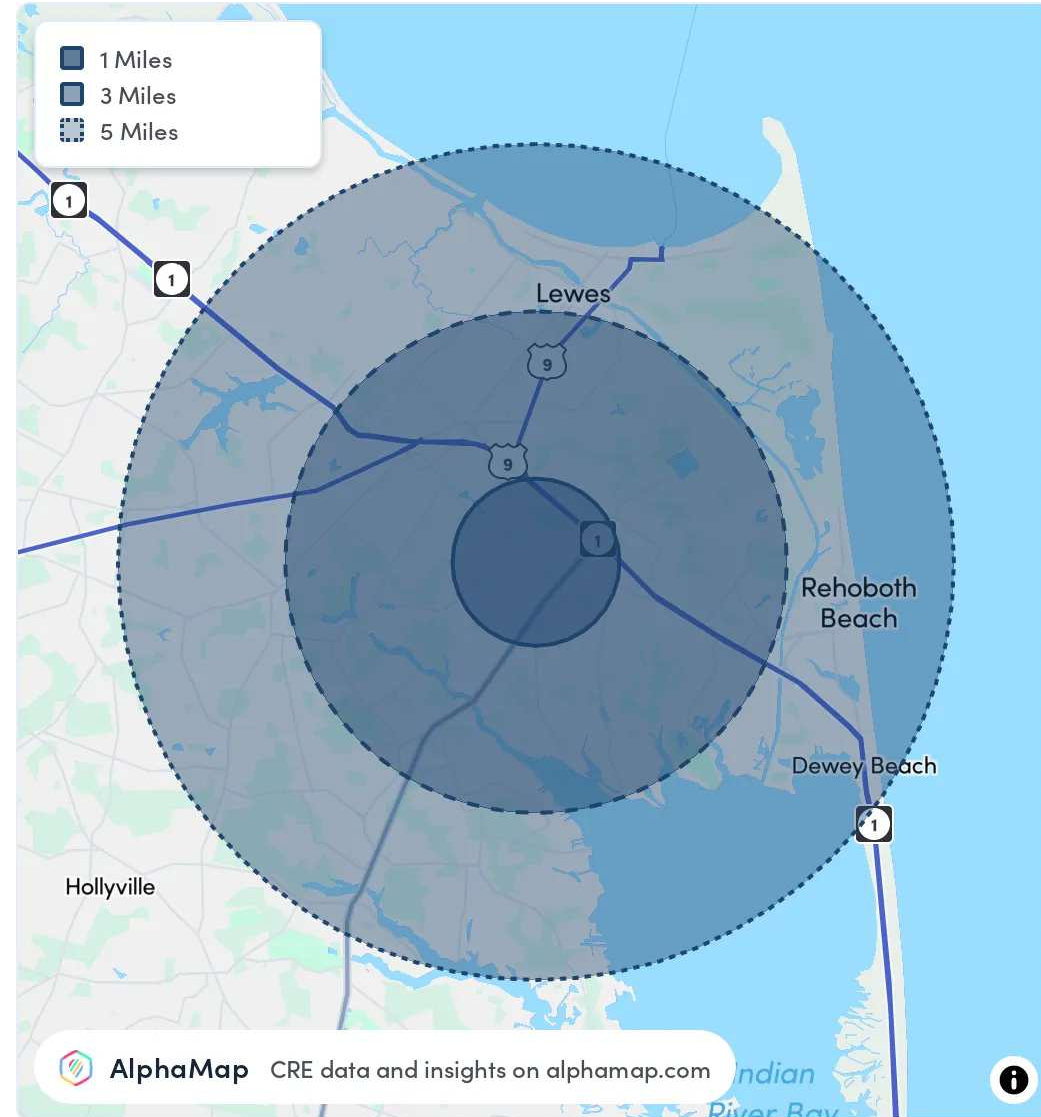


POPULATION	1 MILE	3 MILES	5 MILES
Total Population	3,779	28,688	47,963
Average Age	55	54	55
Average Age (Male)	53	53	54
Average Age (Female)	56	55	56

HOUSEHOLD & INCOME	1 MILE	3 MILES	5 MILES
Total Households	1,948	14,149	23,435
Persons per HH	1.9	2	2
Average HH Income	\$108,329	\$135,931	\$134,763
Average House Value	\$530,479	\$607,161	\$631,389
Per Capita Income	\$57,015	\$67,965	\$67,381

RACE	1 MILE	3 MILES	5 MILES
Population White	3,295	24,524	41,677
Population Black	77	894	1,424
Population American Indian	12	121	194
Population Asian	79	595	913
Population Pacific Islander	-	5	15
Population Other	92	766	1,088

Map and demographics data derived from AlphaMap



For More Information, Contact:

Brittany Danahy, CCIM  
bdanahy@dsmre.com  
302.227.0768 Office  
302.858.8843 Cell

**DSM Commercial**  
Real Estate Services  
18949 Coastal Hwy Suite 304  
Rehoboth Beach, DE 19971  
dsmre.com