

WARLAND

CYPRESS BUSINESS CENTER

6021 KATELLA AVE
SUITE 150
CYPRESS, CA

WARLAND



www.warlandcypress.com

FOR LEASE :: ±8,817 SF
FIRST FLOOR OFFICE SPACE

FEATURES:

- High Image 2-Story Building
- Dual Major Arterial Street Frontage
- 4.0:1 Parking
- Efficient Layout
- TI's to Suit
- Part of a Larger 63,235 SF Building
- Call to show

AMENITIES:

- 200-Acre Planned Development
- People-oriented environment
- Long-term Ownership with commitment to building quality
- Outstanding labor supply
- Expansion Flexibility
- Minutes to San Diego (405), Garden Grove (22) and San Gabriel (605) Freeways



Brian DeRevere

Lic. 00885755

T +1 714 371 9224

brian.derevere@cbre.com

Ryan Peterson

Lic. 01336025

T +1 714 371 9212

ryan.peterson@cbre.com

CBRE

Broker Lic. 00409987
18575 Jamboree Road #600
Irvine, CA 92612

© 2025 CBRE, Inc. This information has been obtained from sources believed reliable. We have not verified it and make no guarantee, warranty or representation about it. Any projections, opinions, assumptions or estimates used are for example only and do not represent the current or future performance of the property. You and your advisors should conduct a careful, independent investigation of the property to determine to your satisfaction the suitability of the property for your needs. N:\TEAM-REVERE\MARKETING-INDESIGN\WARLAND CYPRESS BUSINESS CENTER\6021 KATELLA AVE\BRO _ 6021 KATELLA AVE _ SUITE 150 _ V08AK.INDD

FOR LEASE :: ±8,817 SF

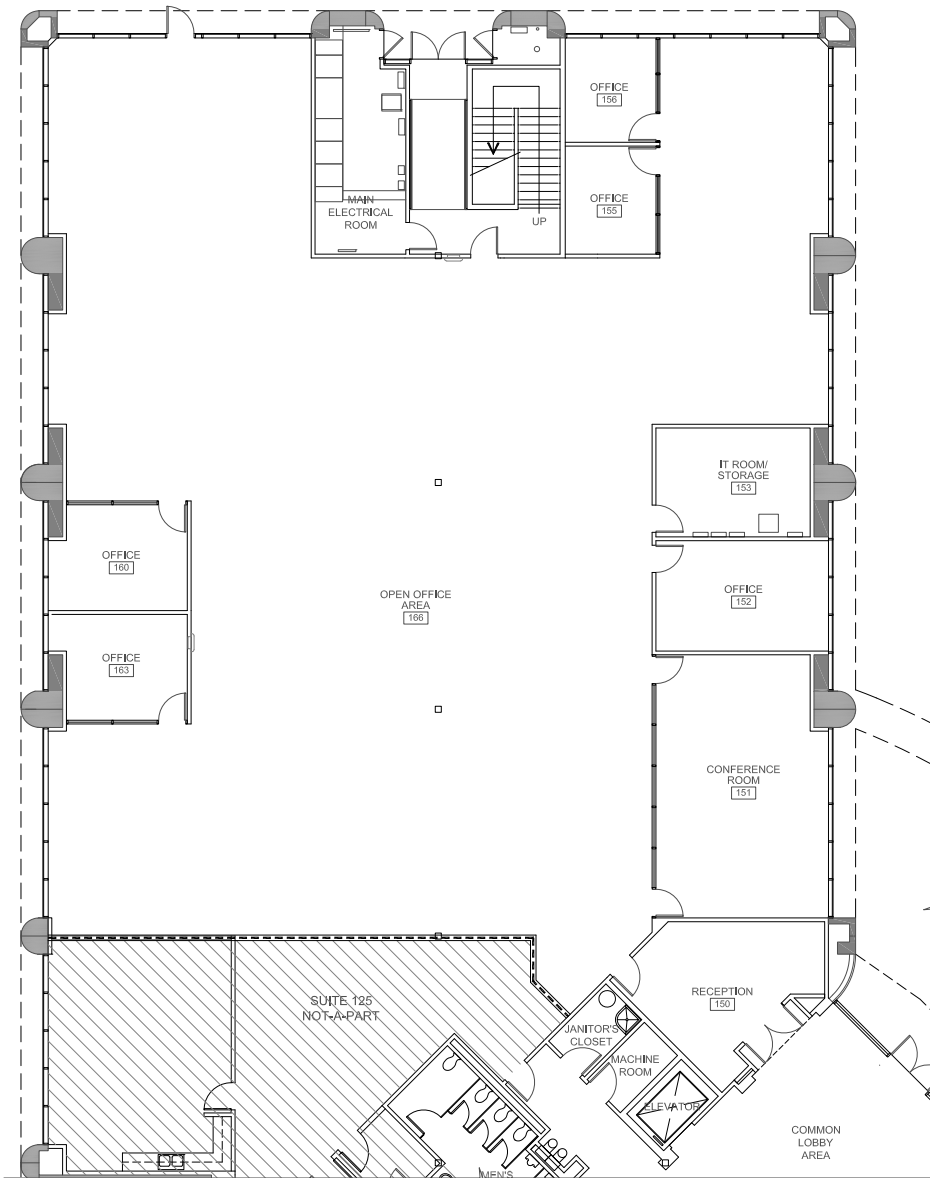
6021 KATELLA AVENUE, SUITE 150
CYPRESS, CALIFORNIA

WARLAND

CYPRESS BUSINESS CENTER

www.warlandcypress.com

FLOOR PLAN



CORPORATE NEIGHBORS:

United Health	Yamaha
Rolls Royce	Time Warner
Dream Trans	Shaw Carpet
DRS Technologies	Siemens
Mitsubishi Electric	TDK



Brian DeRevere

Lic. 00885755

T +1 714 371 9224

brian.derevere@cbre.com

Ryan Peterson

Lic. 01336025

T +1 714 371 9212

ryan.peterson@cbre.com

CBRE

Broker Lic. 00409987
18575 Jamboree Road #600
Irvine, CA 92612