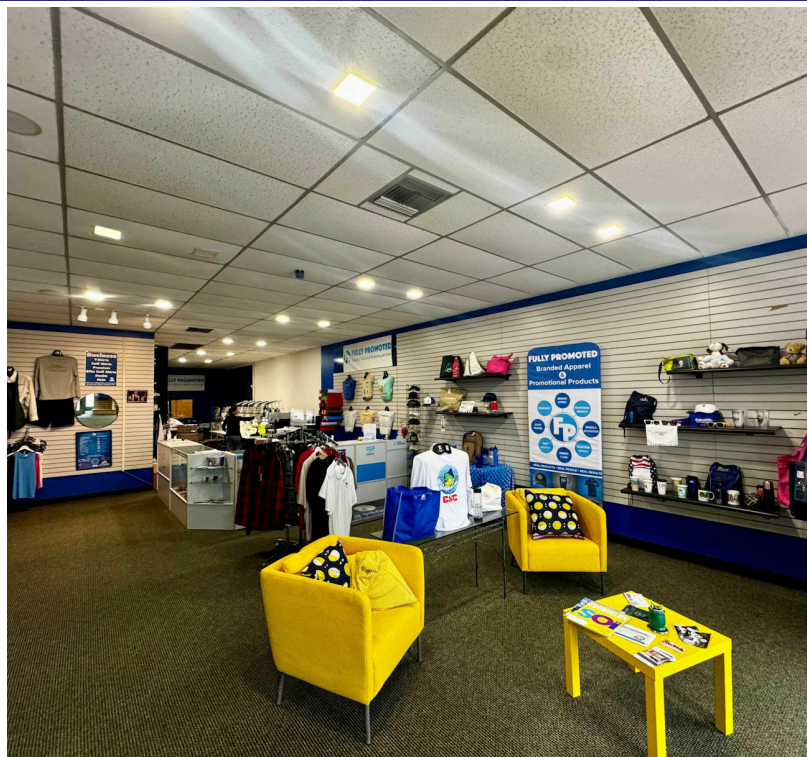


FOR LEASE

# 1501 PLAZA

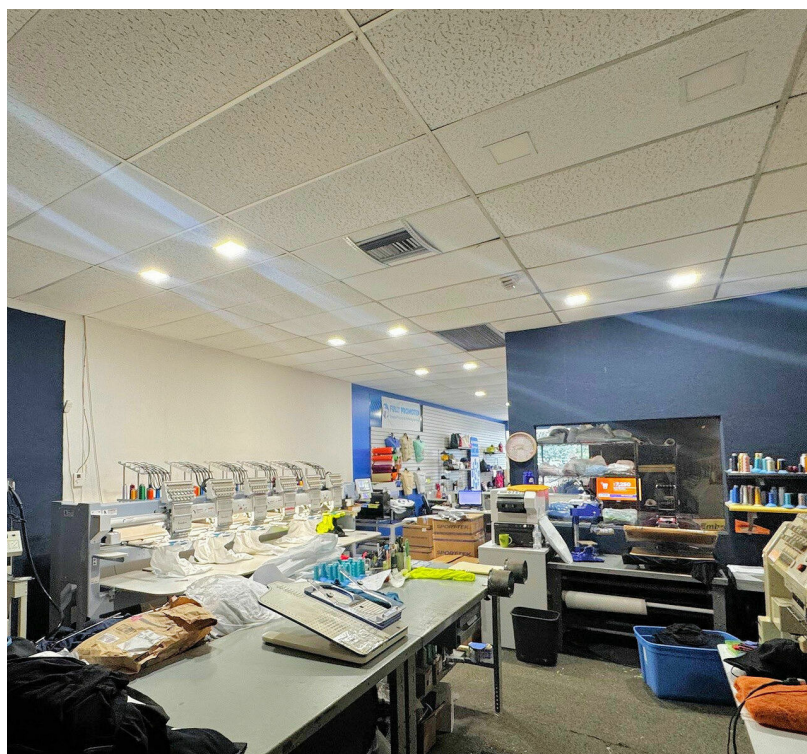
1501 EAST COMMERCIAL BLVD AKA JIMMY JOHNS PLAZA, FORT LAUDERDALE, FL 33334

1549 E COMMERCIAL BLVD



## SPACE HIGHLIGHTS

- 1,535 SF
- Position in-line
- Open Showroom in the front
- Separate section in the back
- Building and Pylon signage available
- CAM includes water and trash



## HALEY PRESSER

Property Manager / Sales Associate  
Direct: 954.485.9200 | Cell: 954.254.5396  
Haley@levyrai.com

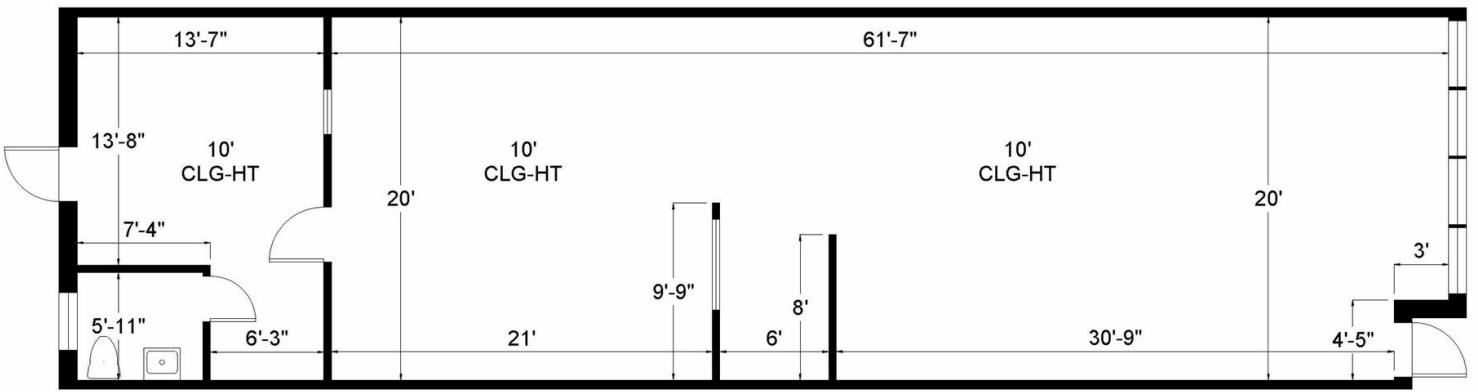


# 1501 PLAZA

1501 EAST COMMERCIAL BLVD AKA JIMMY JOHNS PLAZA, FORT LAUDERDALE, FL 33334

## 1549 E COMMERCIAL BLVD FLOOR PLAN

1549 E Commercial Blvd | Fort Lauderdale, FL 33308



1,535 Rentable Sq. Ft.  
[www.LevyRealtyAdvisors.com](http://www.LevyRealtyAdvisors.com)

**HALEY PRESSER**  
Property Manager / Sales Associate  
Direct: 954.485.9200 | Cell: 954.254.5396  
Haley@levyrai.com

