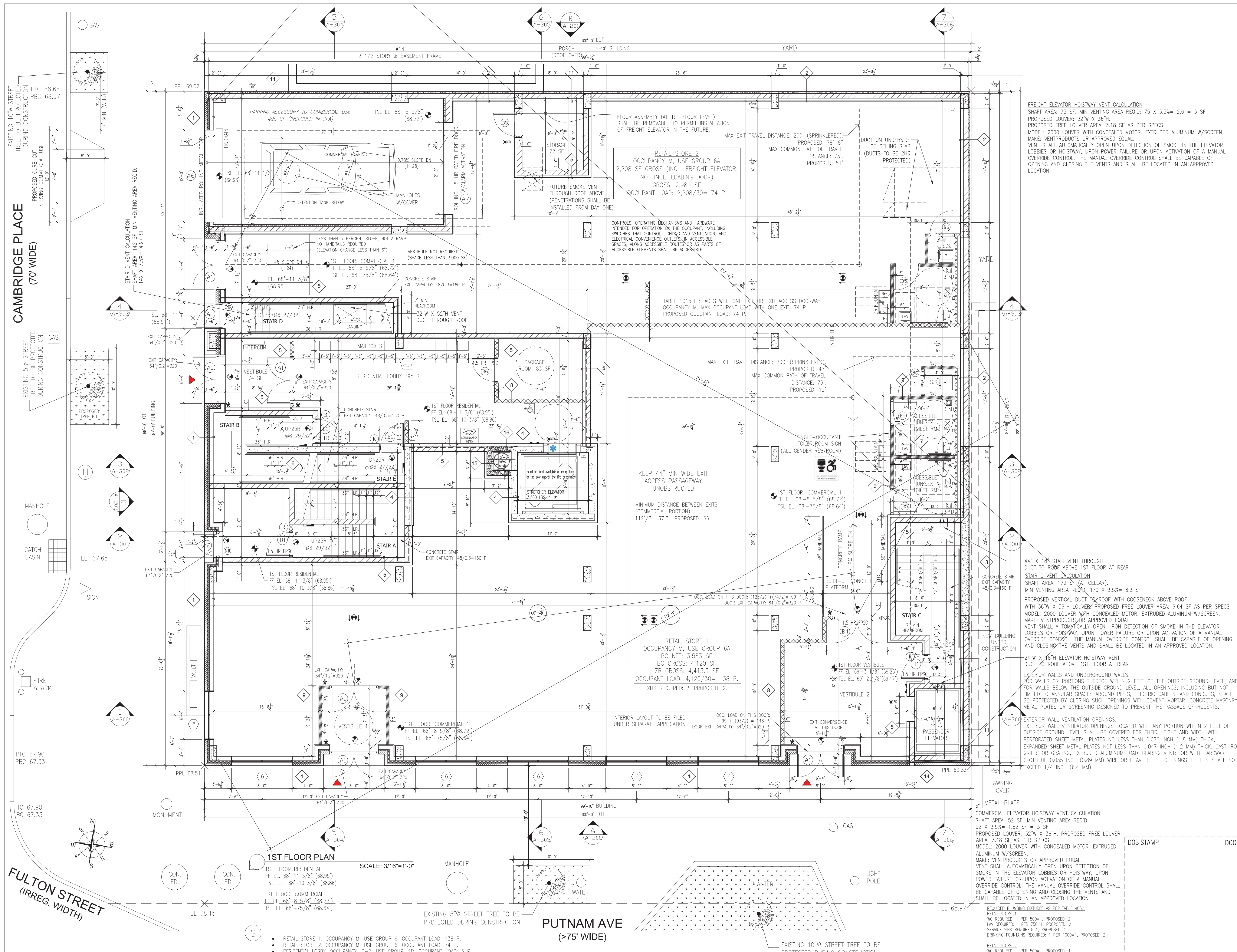


NEW 8-STORY & CELLAR MIXED USE BUILDING 1 PUTNAM AVENUE, BROOKLYN NY 11238

It is a violation of the law for any person, unless acting under the direction of a licensed architect, to alter an item in any way.

REVISIONS

#	Date	Description



**FREIGHT ELEVATOR HOISTWAY VENT CALCULATION**  
 SHAFT AREA: 75 SF. MIN VENTING AREA REQ'D: 75 X 3.5% = 2.6 = 3 SF  
 PROPOSED LOUVER: 32" W X 36" H  
 PROPOSED FREE LOUVER AREA: 3.18 SF AS PER SPECS  
 MODEL: 2000 LOUVER WITH CONCEALED MOTOR, EXTRUDED ALUMINUM W/SCREEN.  
 MAKE: VENTPRODUCTS OR APPROVED EQUAL.  
 VENT SHALL AUTOMATICALLY OPEN UPON DETECTION OF SMOKE IN THE ELEVATOR LOBBIES OR HOISTWAY, UPON POWER FAILURE OR UPON ACTIVATION OF A MANUAL OVERRIDE CONTROL. THE MANUAL OVERRIDE CONTROL SHALL BE CAPABLE OF OPENING AND CLOSING THE VENTS AND SHALL BE LOCATED IN AN APPROVED LOCATION.

**44" X 18" STAIR VENT THROUGH DUCT TO ROOF ABOVE 1ST FLOOR AT REAR STAIR C VENT CALCULATION**  
 SHAFT AREA: 179 SF (AT CELLAR).  
 MIN VENTING AREA REQ'D: 179 X 3.5% = 6.3 SF  
 PROPOSED VERTICAL DUCT TO ROOF WITH GOOSENECK ABOVE ROOF WITH 36" W X 56" H LOUVER. PROPOSED FREE LOUVER AREA: 6.64 SF AS PER SPECS.  
 MODEL: 2000 LOUVER WITH CONCEALED MOTOR, EXTRUDED ALUMINUM W/SCREEN.  
 MAKE: VENTPRODUCTS OR APPROVED EQUAL.  
 VENT SHALL AUTOMATICALLY OPEN UPON DETECTION OF SMOKE IN THE ELEVATOR LOBBIES OR HOISTWAY, UPON POWER FAILURE OR UPON ACTIVATION OF A MANUAL OVERRIDE CONTROL. THE MANUAL OVERRIDE CONTROL SHALL BE CAPABLE OF OPENING AND CLOSING THE VENTS AND SHALL BE LOCATED IN AN APPROVED LOCATION.

**24" W X 18" H ELEVATOR HOISTWAY VENT DUCT TO ROOF ABOVE 1ST FLOOR AT REAR**  
 EXTERIOR WALLS AND UNDERGROUND WALLS, FOR WALLS OR PORTIONS THEREOF WITHIN 2 FEET OF THE OUTSIDE GROUND LEVEL, AND FOR WALLS BELOW THE OUTSIDE GROUND LEVEL, ALL OPENINGS, INCLUDING BUT NOT LIMITED TO ANNULAR SPACES AROUND PIPES, ELECTRIC CABLES, AND CONDUITS, SHALL BE PROTECTED BY CLOSING SUCH OPENINGS WITH CEMENT MORTAR, CONCRETE MASONRY, METAL PLATES OR SCREENING DESIGNED TO PREVENT THE PASSAGE OF RODENTS.

**COMMERCIAL ELEVATOR HOISTWAY VENT CALCULATION**  
 SHAFT AREA: 52 SF. MIN VENTING AREA REQ'D: 52 X 3.5% = 1.82 SF = 3 SF  
 PROPOSED LOUVER: 32" W X 36" H. PROPOSED FREE LOUVER AREA: 3.18 SF AS PER SPECS  
 MODEL: 2000 LOUVER WITH CONCEALED MOTOR, EXTRUDED ALUMINUM W/SCREEN.  
 MAKE: VENTPRODUCTS OR APPROVED EQUAL.  
 VENT SHALL AUTOMATICALLY OPEN UPON DETECTION OF SMOKE IN THE ELEVATOR LOBBIES OR HOISTWAY, UPON POWER FAILURE OR UPON ACTIVATION OF A MANUAL OVERRIDE CONTROL. THE MANUAL OVERRIDE CONTROL SHALL BE CAPABLE OF OPENING AND CLOSING THE VENTS AND SHALL BE LOCATED IN AN APPROVED LOCATION.

- RETAIL STORE 1, OCCUPANCY M, USE GROUP 6, OCCUPANT LOAD: 138 P.
- RETAIL STORE 2, OCCUPANCY M, USE GROUP 6, OCCUPANT LOAD: 74 P.
- RESIDENTIAL LOBBY, OCCUPANCY: R-2, USE GROUP: 2B, OCCUPANT LOAD: 5 P.
- TOTAL OCCUPANT LOAD: 217 P.

**RSLN ARCHITECTURE PLLC**  
 6701 Bay Parkway, 3rd Floor  
 Brooklyn, NY 11204  
 Tel. 347 702 5454  
 Fax. 347 702 5455  
 RSLN@RSLNArchitecture.com

Architecture - Planning - Interior Design  
 PROJECT

NEW 8-STORY & CELLAR  
 MIXED USE BUILDING  
 1 PUTNAM AVENUE,  
 BROOKLYN NY 11238

DRAWING TITLE

1ST FLOOR PLAN

DOB JOB # B00696890-11

SEAL & SIGNATURE

DATE: \_\_\_\_\_  
 PROJECT NO: \_\_\_\_\_  
 DRAWING BY: \_\_\_\_\_  
 CHK BY: \_\_\_\_\_  
 DWG NO: \_\_\_\_\_  
**A-101.00**  
 CAD FILE NO: \_\_\_\_\_