




4th Floor West: 21,878 RSF

2nd Floor West: 22,099 RSF

 **JLL** SEE A BRIGHTER WAY

For Sublease

21,878 - 43,977 ± RSF Available

Maitland Lake

851 Trafalgar Ct



Maitland Lakes

Office Park



174,000 SF

Four Story Office Building



4.0/1,000 SF

Parking Ratio



Engineer

On-Site



Cafe

On-Site



Lake and Garden

Views



Second Floor

22,099 SF



Fourth Floor

21,878 SF



10/31/2027

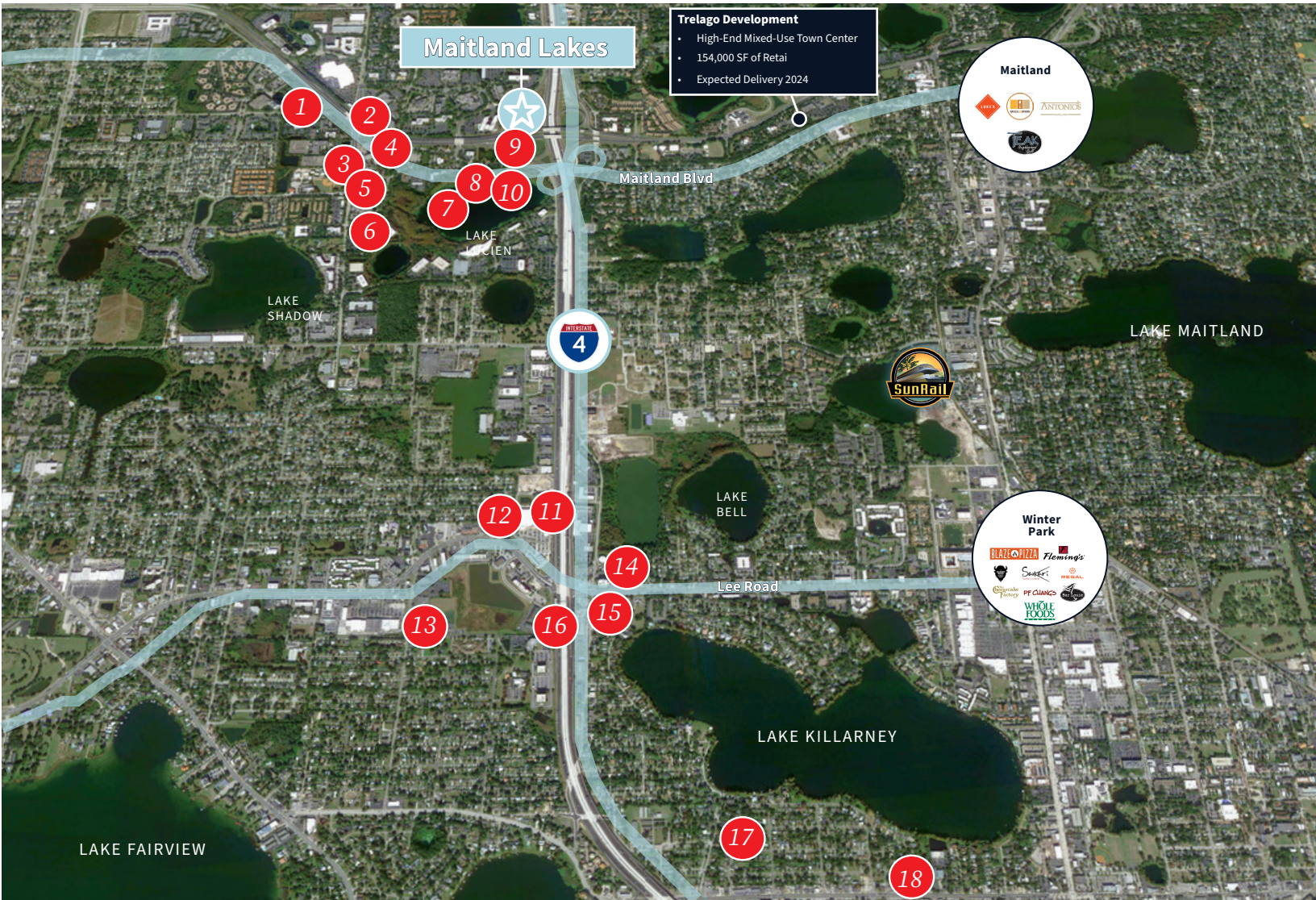
Sublease Exp. Date

Maitland Lakes offers access to suburban shopping, dining and service amenities. Area highlights include Genesis Health Club - Orlando Sportsplex, West Town Corners featuring a variety of retailers and restaurants, proximity to Lake Lilly Park and Park Avenue in downtown Winter Park.



Maitland

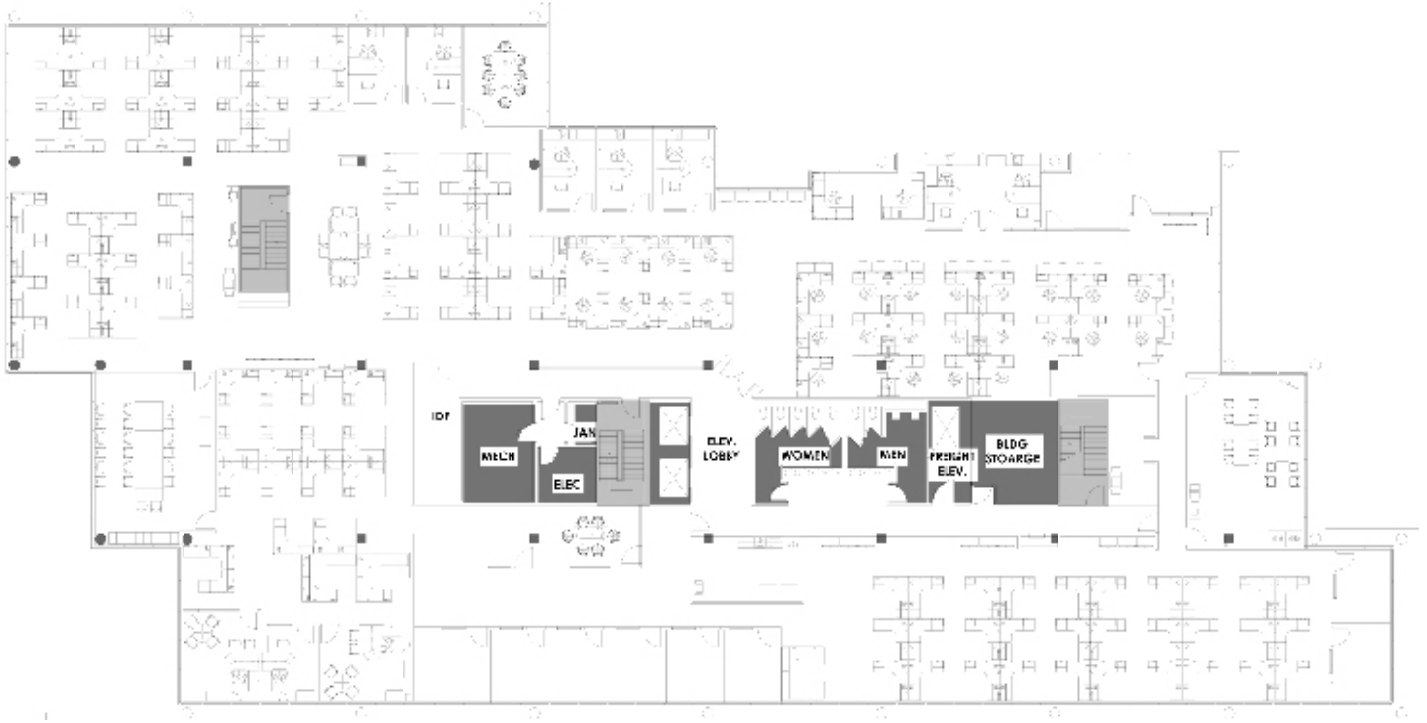
The City of Maitland is a premier suburban community of Orlando. Located conveniently off of I-4 and just 7 miles from downtown Orlando, Maitland offers the benefits of a larger metro with access to amenities. Employees benefit from easy access to area retail, restaurant and service amenities in addition to variety housing options in the surrounding area. The Maitland Lakes building offers easy access to several major roadways, providing easy access to the greater Orlando area.



1. Chick-Fil-A
2. Orlando Ice Den
3. Extended Stay America- Orlando- Maitland
4. Sam Snead's Oak Grill and Tavern
5. Courtyard by Marriott Orlando Altamonte
6. Curry Bowl Orlando
7. Homewood Suites by Hilton Orlando- Maitland
8. 7-Eleven
9. Sheraton Orlando North

10. Applebee's Grill
11. The Home Depot
12. Christner's Prime Steak & Lobster
13. Walmart
14. Starbucks
15. Denny's
16. Countryside Inn & Suites
17. Hunger Street Tacos
18. 4 Rivers Smokehouse

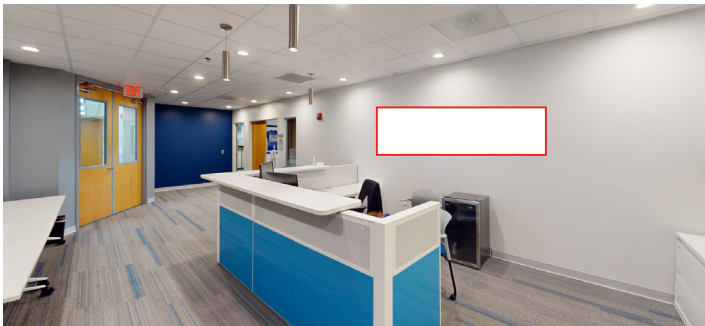
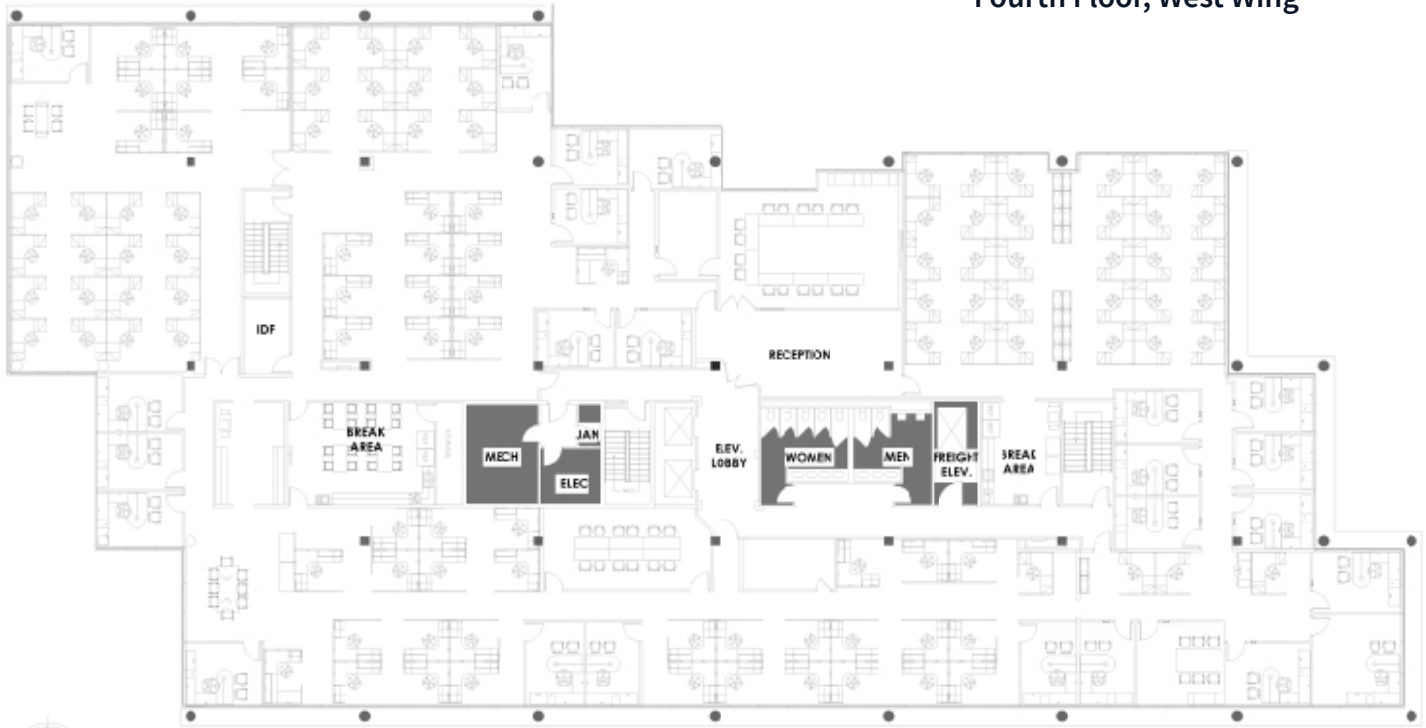
Second Floor, West Wing



- 22,099 RSF
- Sublease Exp. Date: 10/31/2027
- Open Work Stations Throughout
- 21 Private Offices
- 4 Conference Areas
- Private Restroom
- Kitchen

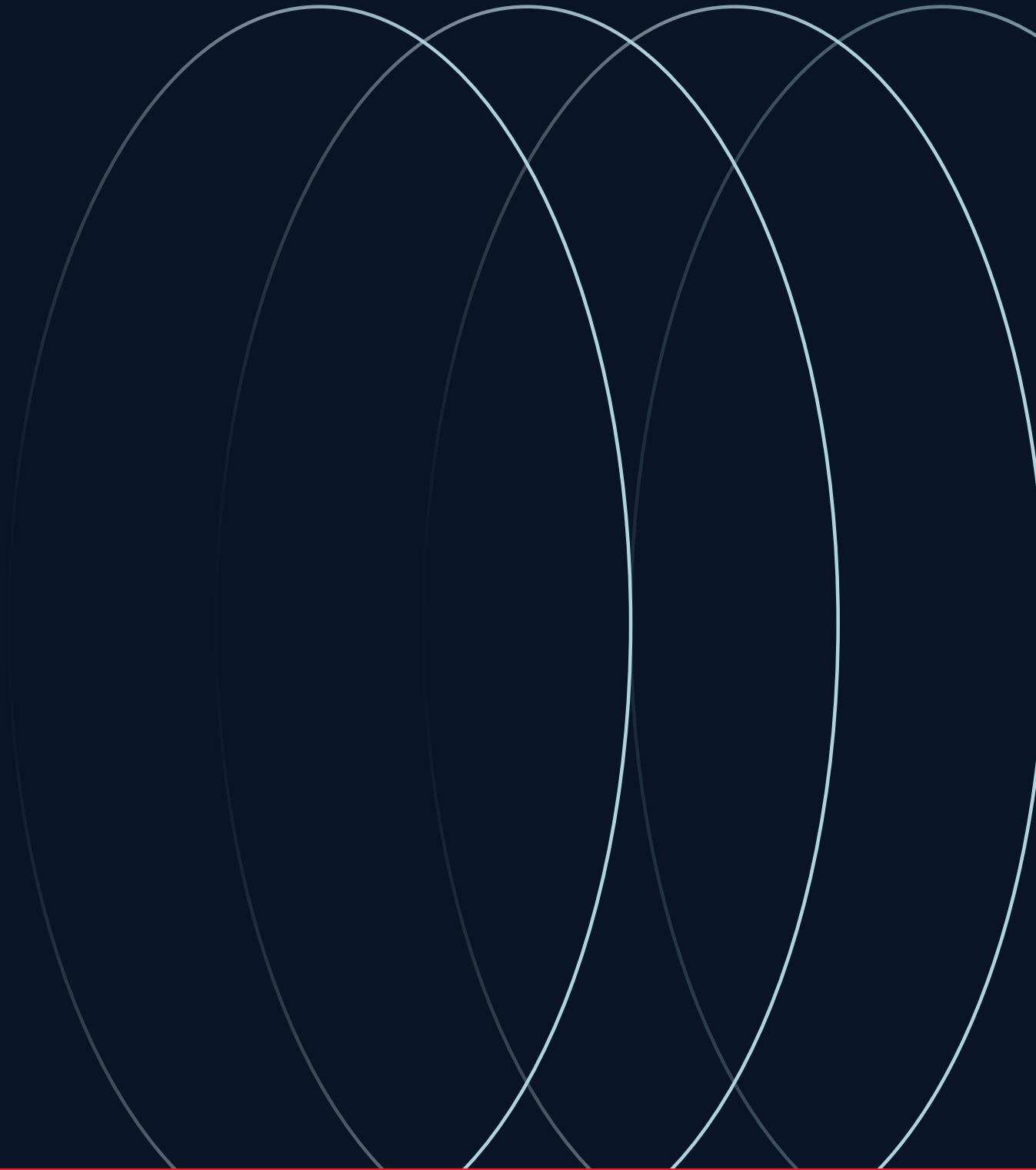


Fourth Floor, West Wing



- 21,878 RSF
- Sublease Exp. Date: 10/31/2027
- Open Work Stations Throughout
- 24 Private Offices
- 2 Large Conference Areas
- Private Restroom
- Pantry/ Break Area





Jamie Barati
Senior Vice President
407-930-1803
jamie.barati@jll.com

John Worrell
Senior Vice President
321-684-9240
john.worrell@jll.com