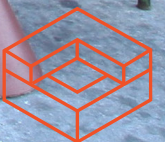


676 FLUSHING AVE

BED-STUY

BUSINESS ASSET SALE
& LEASE ASSIGNMENT

Winona's



676 FLUSHING AVE
BED-STUY

JUSTIN LOSH
(347) 388-4649
JUSTIN@COUNTRYNY.COM

OFFICE
250 MOORE ST, #302
BROOKLYN, NY 11206



PROPERTY DETAILS

 **\$7,102/mo + Key Fee**

 **2,150 SF**

 **4+5+5 Remaining**

FULLY OPERATIONAL
NO IN-PERSON INQUIRIES

RESTAURANT BUILT IN 2020

NEW MECHANICALS AND
UTILITY SERVICES

TWO BARS, EACH WITH
LIQUOR LICENSE

GAS COOKING HOOD
WITH ANSUL

BASEMENT WITH WALK-IN
COOLER AND PREP

INQUIRE FOR EQUIPMENT LIST
AND KEY MONEY PRICE

THREE SKYLIGHTS

TWO BATHROOMS, ONE ADA

VIRTUAL TOUR [HERE](#)

676 FLUSHING AVE
BED-STUY

JUSTIN LOSH
(347) 388-4649
JUSTIN@COUNTERNY.COM

OFFICE
250 MOORE ST, #302
BROOKLYN, NY 11206



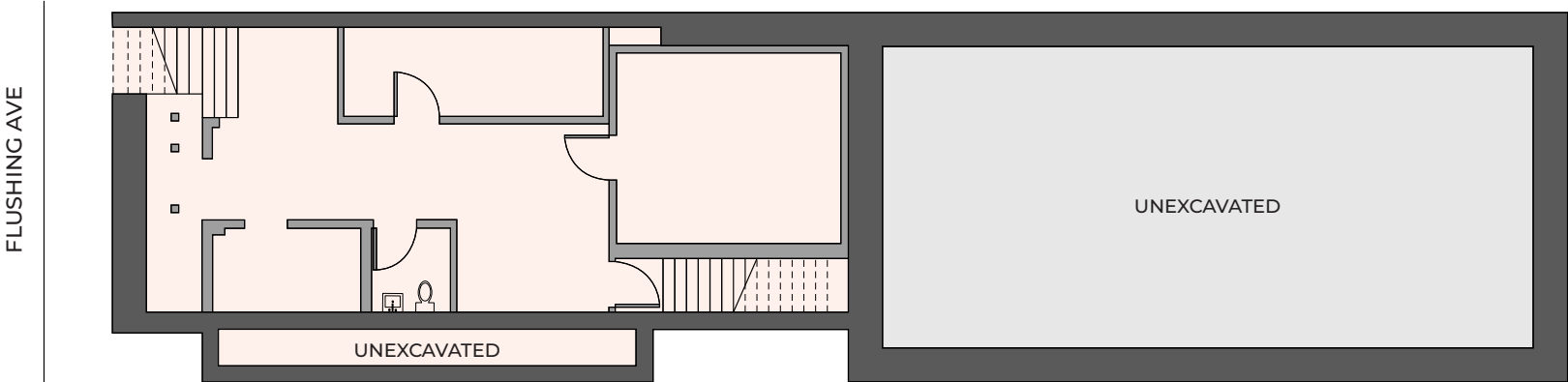
676 FLUSHING AVE
BED-STUY

JUSTIN LOSH
(347) 388-4649
JUSTIN@COUNTRYNY.COM

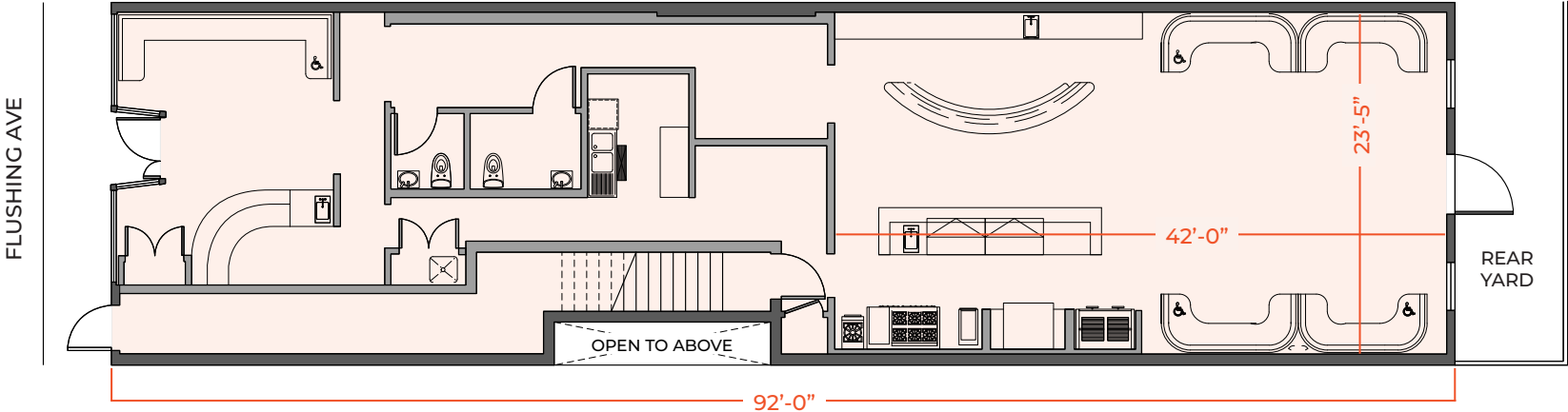
OFFICE
250 MOORE ST, #302
BROOKLYN, NY 11206



CELLAR PLAN



FIRST FLOOR PLAN



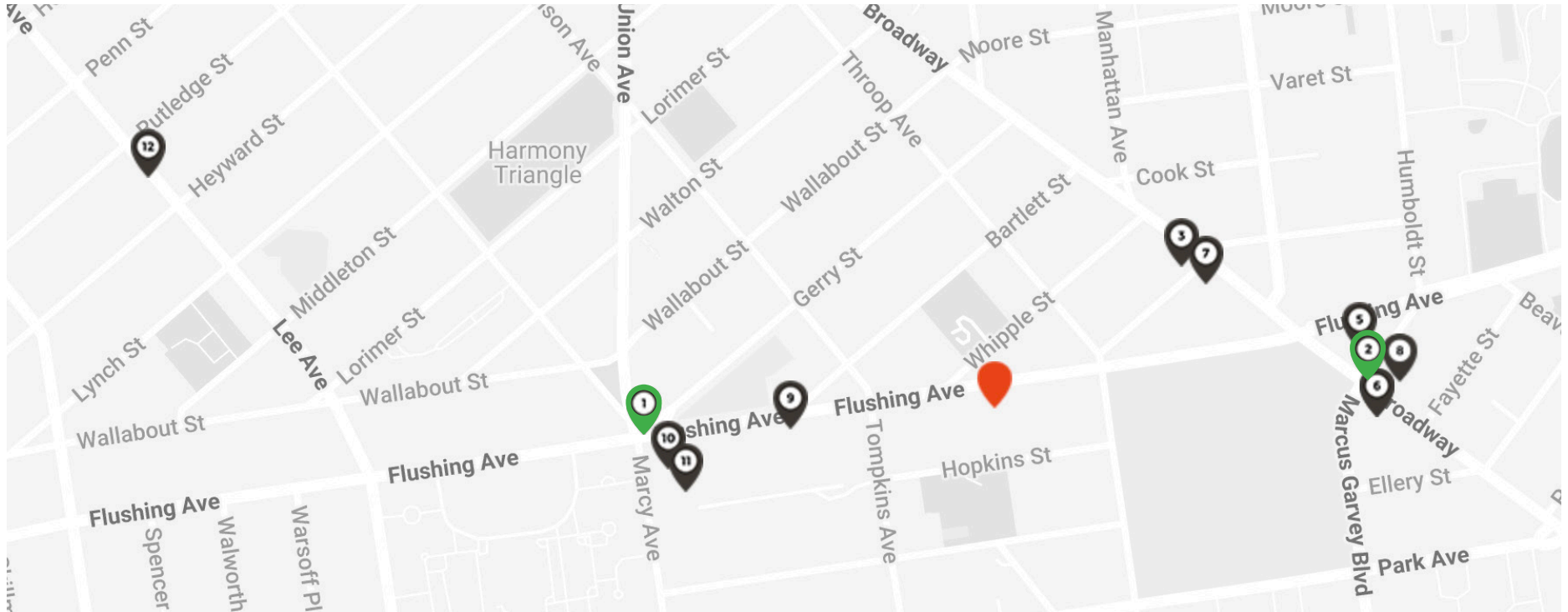
Disclaimer: Please note this floor plan is for marketing purposes and is only to be used as a guide. All efforts have been made to ensure its accuracy at time of print. Approximate measurements listed in this floor plan are reflective of the interior space dimensions only.

676 FLUSHING AVE

BED-STUY

JUSTIN LOSH
(347) 388-4649
JUSTIN@COUNTRYNY.COM

OFFICE
250 MOORE ST, #302
BROOKLYN, NY 11206



NEIGHBORS

- 1 - FLUSHING AVE G TRAIN
- 2 - FLUSHING AVE JMZ TRAIN
- 3 - MCDONALD'S
- 4 - STARBUCKS
- 5 - WALGREENS
- 6 - CHIPOTLE
- 7 - POPEYE'S
- 8 - PLANET FITNESS
- 9 - PFIZER BUILDING
- 10 - REVEL CHARGING STATION
- 11 - CIRCUS ACADEMY NY
- 12 - ONEG BAKERY

DEMOGRAPHICS

(1MI/3MI)
POPULATION - 172,387 / 1,128,972
AVERAGE AGE - 34.4 / 36.1
AVERAGE HH INCOME -
\$83,305 - \$99,174

TRANSPORT

JMZ TRAIN: FLUSHING AVE
AVERAGE DAILY RIDERS
WEEKDAY - 5,217
WEEKEND - 5,327