



**CLASS A OFFICE**  
FOR SUBLEASE

**6201 Greenleigh Ave**  
White Marsh/Middle River, MD

**LIVE | WORK | PLAY**  
**IN BALTIMORE COUNTY'S NEWEST DEVELOPMENT**

**Doug Brinkley**  
Managing Director  
+1 410 347 1140  
douglas.brinkley@cushwake.com

**Charlie Fenwick**  
Managing Director  
+1 410 953 6693  
charles.fenwick@cushwake.com

**Lizzy Sweeney**  
Senior Director  
+1 410 347 1149  
lizzy.sweeney@cushwake.com

**PLUG & PLAY**  
**POTENTIAL**

# OFFICE FOR SUBLEASE

6201 GREENLEIGH AVE | WHITE MARSH/MIDDLE RIVER, MD

Conference



Typical Workstation



Lobby



**17,282 SF OF NEWLY FINISHED SUBLEASE SPACE IN THE NEWLY DEVELOPED GREENLEIGH IN BALTIMORE CROSSROADS**

Sublease available through  
May 31, 2029

Extensive glass line with state-of-the-art workplace strategy components

New building construction & open ceiling concept throughout

“Plug and Play”: Haworth furniture systems can be made available

5/1,000 Square feet parking

Café

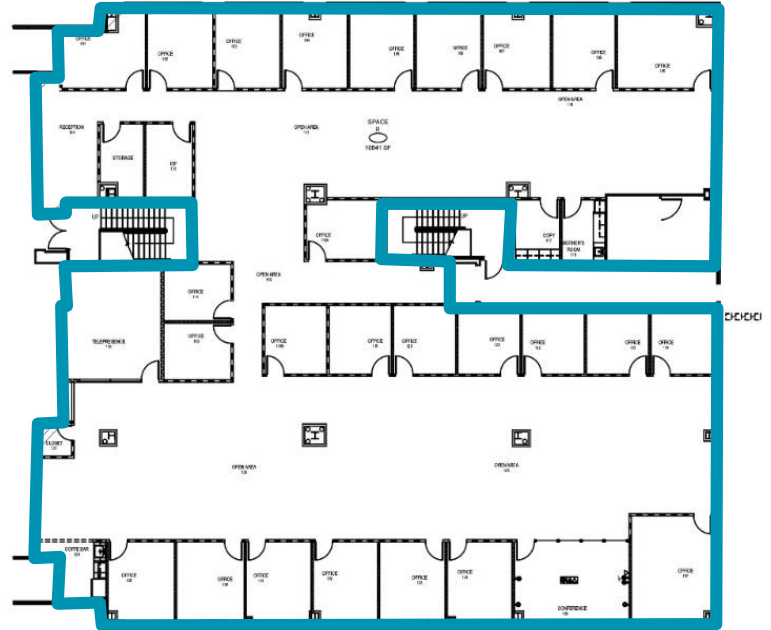
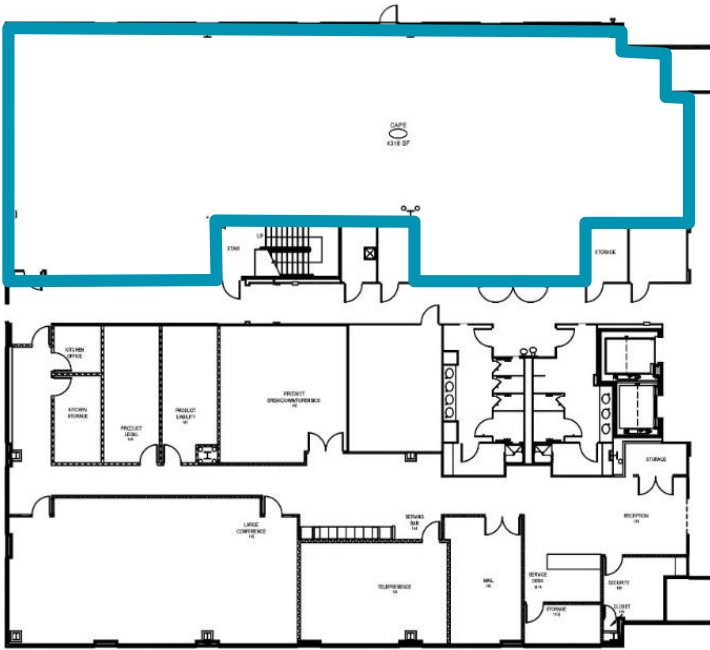


Conference/Training



1st Floor  
17,282 RSF Available

4,923 RSF



12,359 RSF

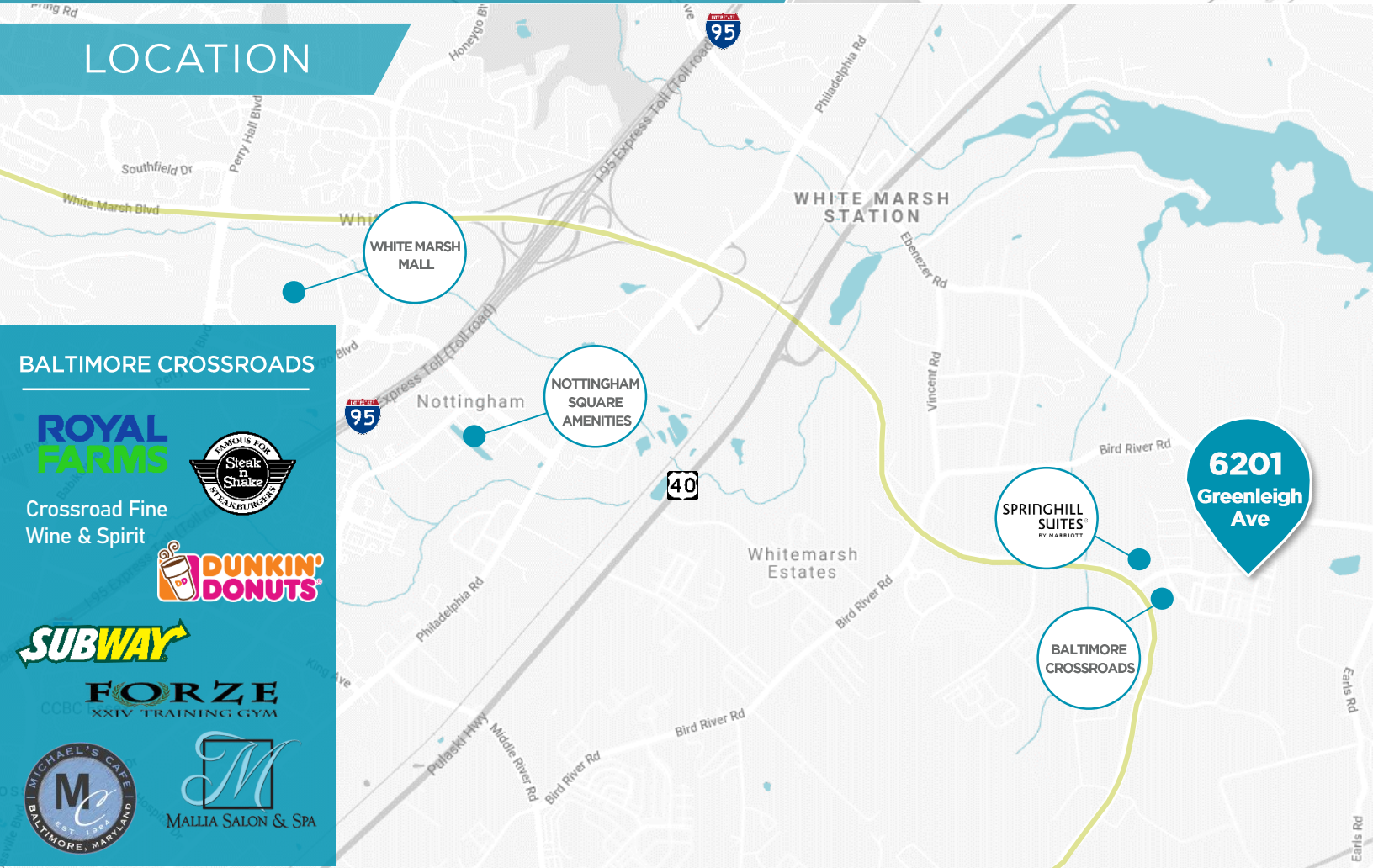
Outdoor Patio



Restroom



**LOCATION**



**BALTIMORE CROSSROADS**

**ROYAL FARMS**



Crossroad Fine Wine & Spirit



**FORZE**  
CCBC XXIV TRAINING GYM



**GREENLEIGH AT BALTIMORE CROSSROADS**

**RESIDENTIAL**

1,000 single-family & town homes  
1,000 luxury apartments

**RETAIL**

35,000 SF inline retail within walking distance

**HOSPITALITY**

SpringHill Suites by Marriott hosting 120 Rooms

**Doug Brinkley**  
Managing Director  
+1 410 347 1140  
douglas.brinkley@cushwake.com

**Charlie Fenwick**  
Managing Director  
+1 410 953 6693  
charles.fenwick@cushwake.com

**Lizzy Sweeney**  
Senior Director  
+1 410 347 1149  
lizzy.sweeney@cushwake.com