



INNOVATION  
PROPERTIES  
GROUP

2900 Main St

Alameda, CA

An aerial photograph of an industrial facility, the Sawtooth Building, located at 2900 Main St in Alameda, CA. The building is a long, white, multi-story structure with a sawtooth roof. A red rectangular box highlights a specific section of the building's facade. In the background, a large body of water (the Alameda Estuary) is visible, along with various industrial cranes and structures. The sky is blue with some clouds.

# Alameda Estuary Industrial Space

±9,812 SF Suite 102 & 104

2900 Main St. - Sawtooth Building

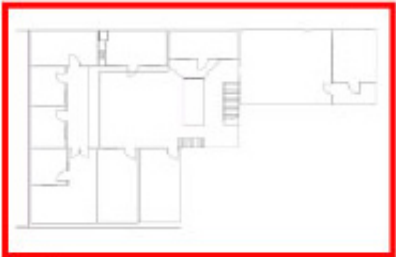
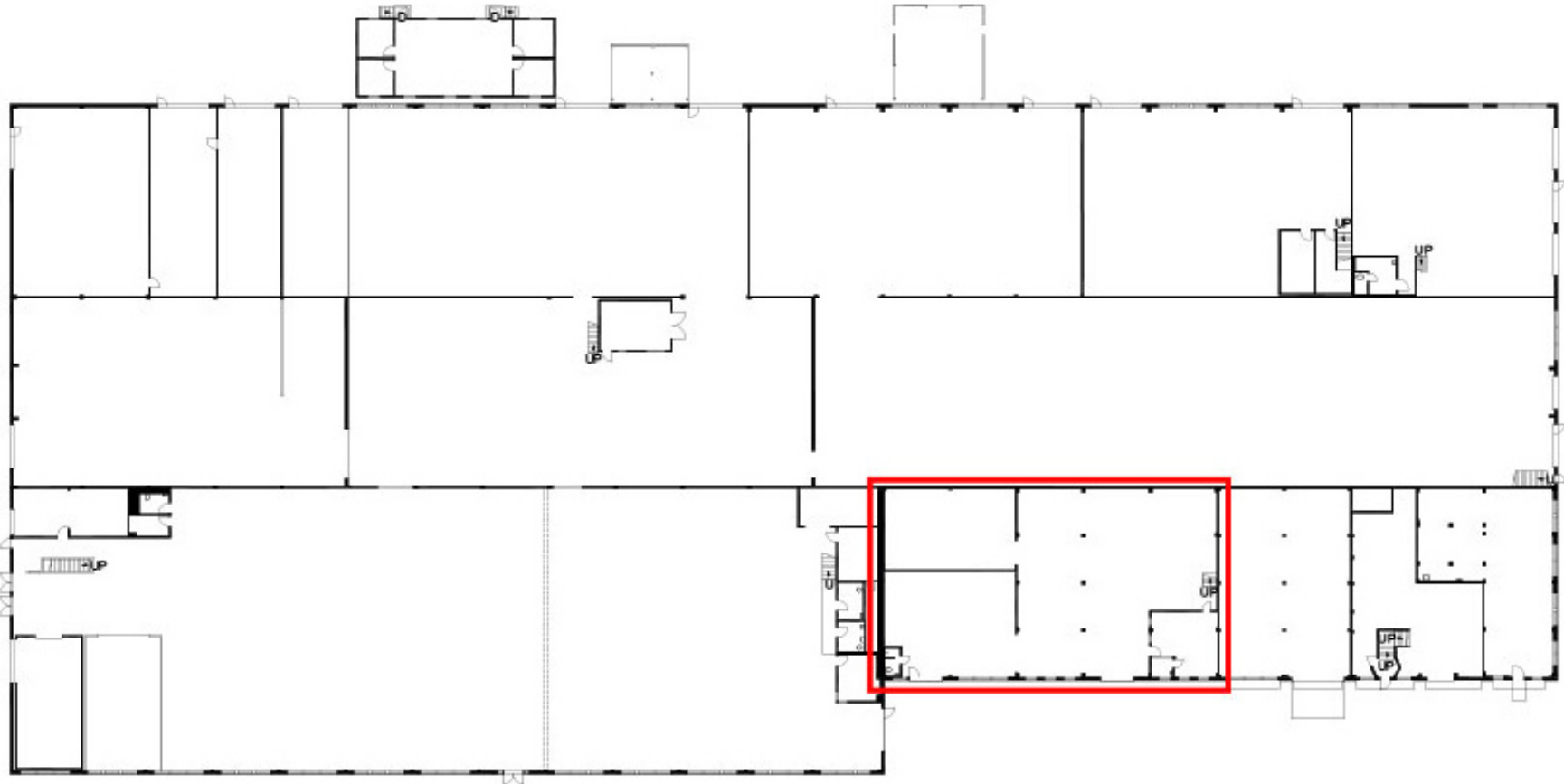


2900 Main St

## Lease Highlights:

- ±9,812 SF Total
- ±5,892 SF ground floor with 3 large areas
- ±3,920 SF Mezzanine with multiple rooms
- Ability to connect with adjacent space for a total of 19,619 SF
- 2 large rooms with 20' clear height
- Adjacent to Alameda Point
- Located next to water on Alameda Estuary
- Heavy power
- Two (2) grade level drive ins
- Private restrooms
- Ample parking
- 24/7 Security
- \$1.50/FT/month IG





2nd Floor

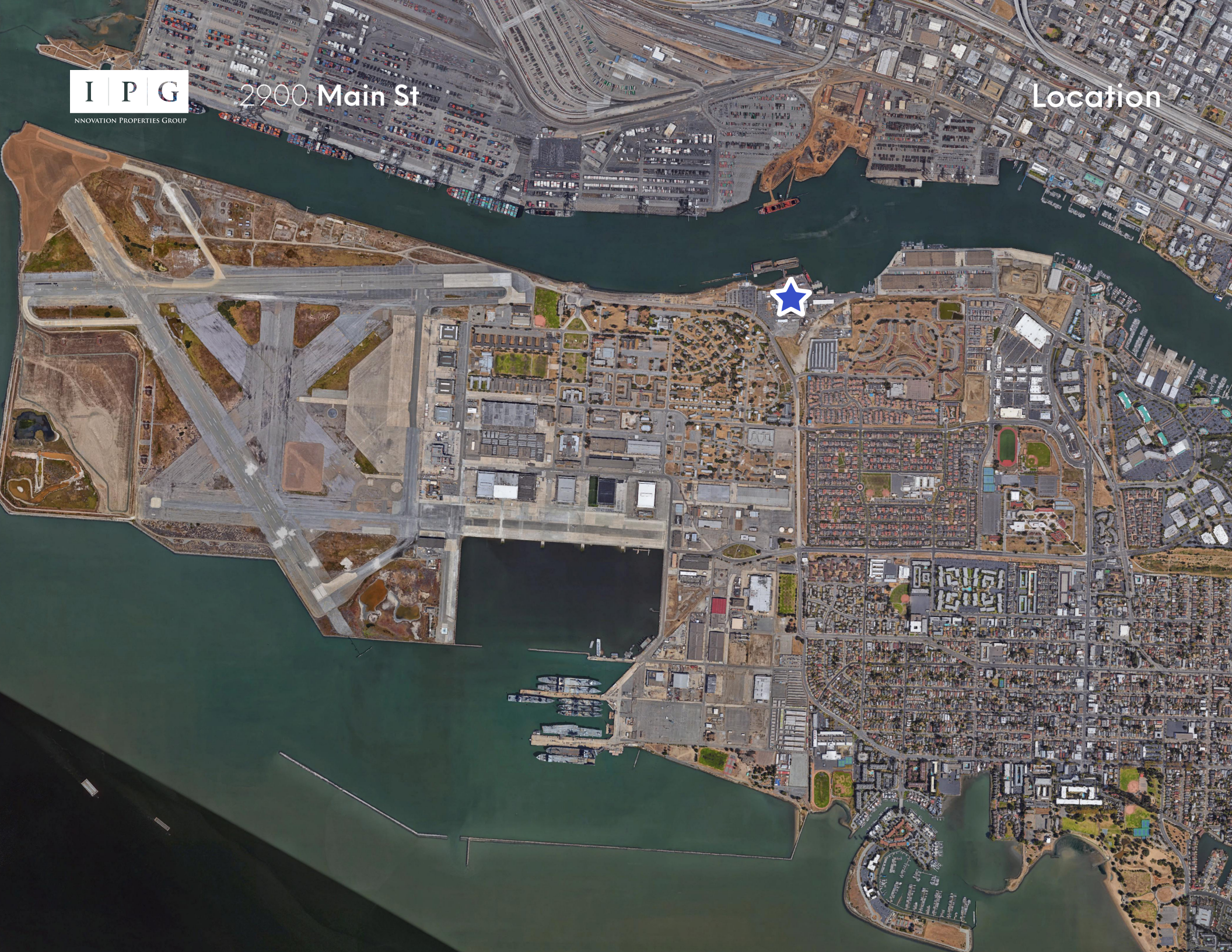




INNOVATION PROPERTIES GROUP

2900 Main St

Location





INNOVATION  
PROPERTIES  
GROUP

# 2900 Main St

Alameda, CA

**For leasing information**

**Innovation Properties Group**  
181 2nd Street, San Francisco, CA  
[ipgsf.com](http://ipgsf.com) | CL 02031924

**Taylor Stein** | Senior Vice President  
(415) 518-8550 | [taylor@ipgsf.com](mailto:taylor@ipgsf.com)  
DRE 02059122

This document has been prepared by IPG for advertising and general information only. IPG makes no guarantees, representations or warranties of any kind, expressed or implied, regarding the information including, but not limited to, warranties of content, accuracy and reliability. Any interested party should undertake their own inquiries as to the accuracy of the information. IPG excludes unequivocally all inferred or implied terms, conditions and warranties arising out of this document and excludes all liability for loss and damages arising there from. This publication is the copyrighted property of IPG and/or its licensor(s). ©2024. All rights reserved