

FOR LEASE

Professional Office Space
433 Airport Boulevard, Burlingame



Bayside Realty Partners
1761 Laurel Street
San Carlos, CA 94070
www.baysiderp.com
CA Broker# 00868528

Trask Leonard
(650) 949-0700
tleonard@baysiderp.com
DRE# 01152101



Most expansive Bay view space in Burlingame on top floor

Approximately 7,868 sf with world-class views, ceiling height, natural light

High-end furnishings including full kitchen

11 expansive private offices with skylight in common space

Close to SFO, US-101, new Facebook campus, downtown Burlingame and numerous restaurants and hotels within steps

Caltrain/BART shuttle stop directly across street



FOR LEASE

Professional Office Space
433 Airport Boulevard, Burlingame



Bayside Realty Partners
1761 Laurel Street
San Carlos, CA 94070
www.baysiderp.com
CA Broker# 00868528

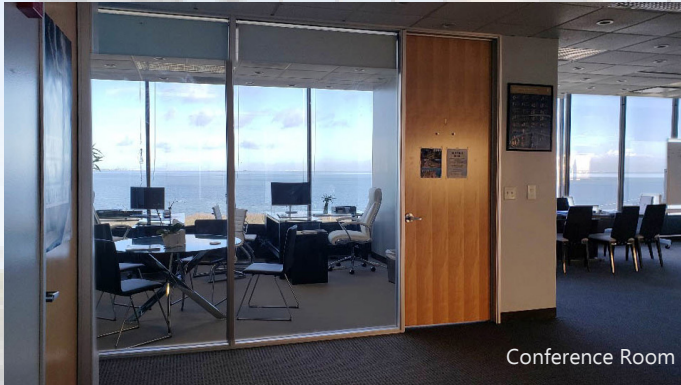
Trask Leonard
(650) 949-0700
tleonard@baysiderp.com
DRE# 01152101



Bay View



Open Space



Conference Room



Window Line

FOR LEASE

Professional Office Space
433 Airport Boulevard, Burlingame



Bayside Realty Partners
1761 Laurel Street
San Carlos, CA 94070
www.baysiderp.com
CA Broker# 00868528

Trask Leonard
(650) 949-0700
tleonard@baysiderp.com
DRE# 01152101



8 minute drive to downtown Burlingame
World-class restaurants and shopping



FOR LEASE

Professional Office Space
433 Airport Boulevard, Burlingame



Bayside Realty Partners
1761 Laurel Street
San Carlos, CA 94070
www.baysiderp.com
CA Broker# 00868528

Trask Leonard
(650) 949-0700
tleonard@baysiderp.com
DRE# 01152101

Recently modernized side-walks, street lighting

Strategically positioned with an extensive shoreline on San Francisco Bay, an accessible network of three highways and an array of public transportation options, including major Caltrain station



FOR LEASE

Professional Office Space
433 Airport Boulevard, Burlingame



Bayside Realty Partners
1761 Laurel Street
San Carlos, CA 94070
www.baysiderp.com
CA Broker# 00868528

Trask Leonard
(650) 949-0700
tleonard@baysiderp.com
DRE# 01152101

Strategically
located close to
many hotels,
SFO and new
significant
Facebook campus
within steps



FOR LEASE

Professional Office Space
433 Airport Boulevard, Burlingame



Bayside Realty Partners
1761 Laurel Street
San Carlos, CA 94070
www.baysiderp.com
CA Broker# 00868528

Trask Leonard
(650) 949-0700
tleonard@baysiderp.com
DRE# 01152101



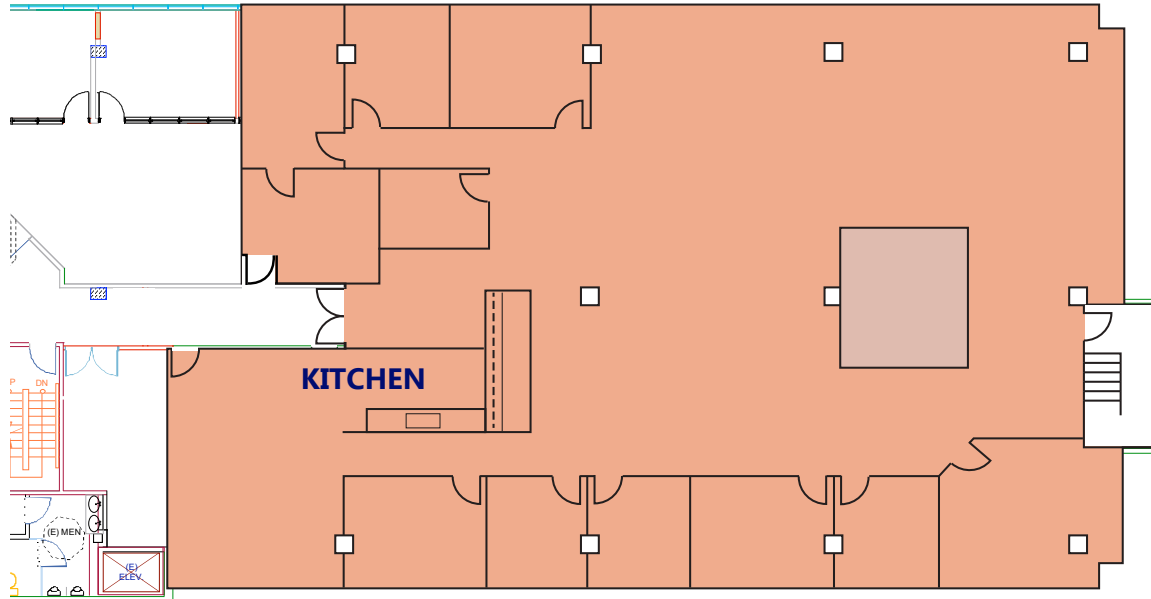
FOR LEASE

Professional Office Space
433 Airport Boulevard, Burlingame



Bayside Realty Partners
1761 Laurel Street
San Carlos, CA 94070
www.baysiderp.com
CA Broker# 00868528

Trask Leonard
(650) 949-0700
tleonard@baysiderp.com
DRE# 01152101



5th Floor — Suite 550