



## NEARBY RETAILERS



## RETAIL OR PAD SITES FOR LEASE

- Visibility: Direct visibility on Hull St (47,000 vehicles per day)
- Access: Two signalized intersections
- Demographics: \$175,000 Average HH Income (3-Mile)
- Path of Growth: Located in fastest-growing county in Virginia (2024)

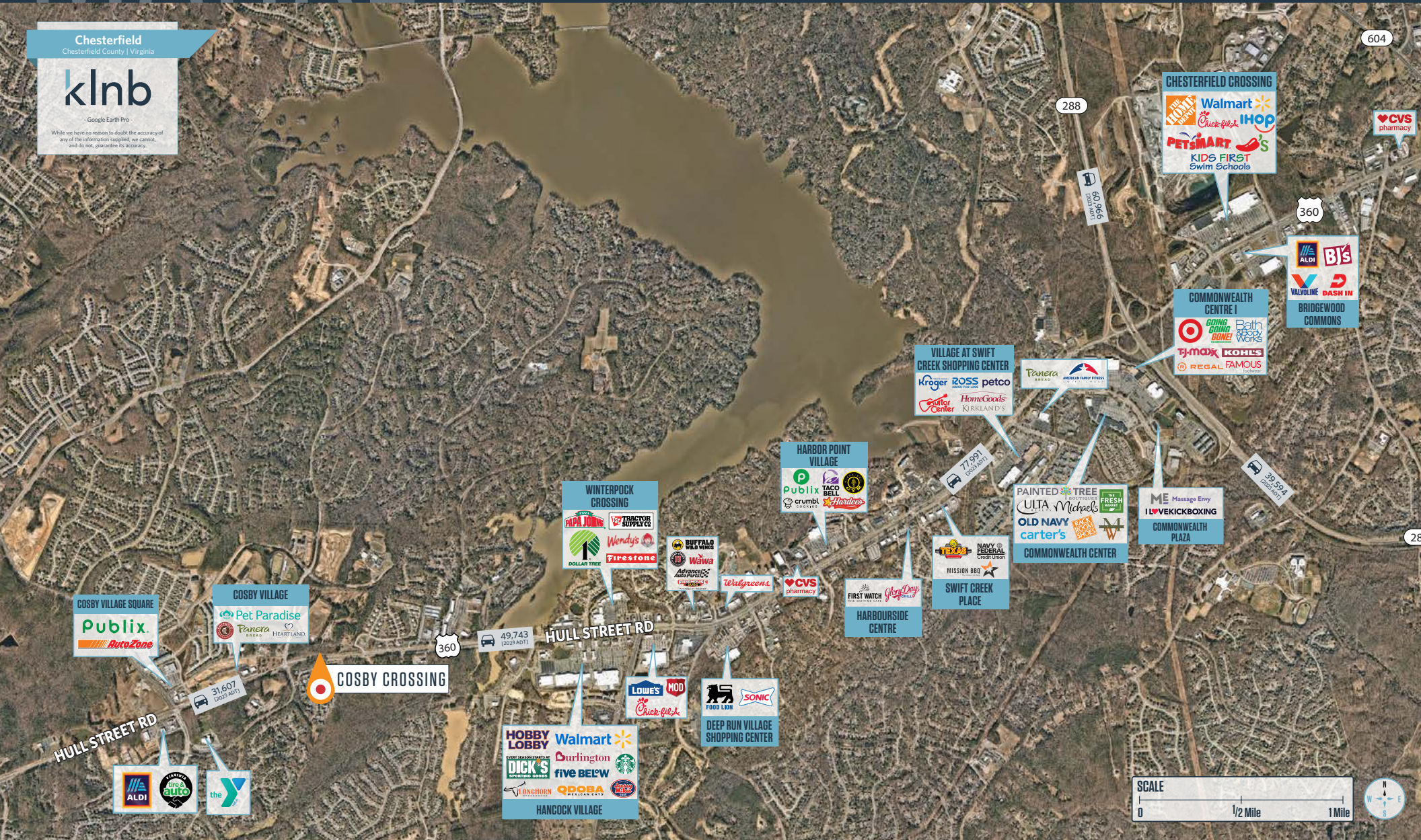
**BO GALLES**  
bgalles@klnb.com | 703-268-2712

**BOB BROWNING**  
bbrowning@klnb.com | 703-268-2717

Chesterfield  
Chesterfield County | Virginia

## klnb

- Google Earth Pro -  
While we have no reason to doubt the accuracy of any of the information supplied, we cannot, and do not, guarantee its accuracy.



**BO GALLES**  
bgalles@klnb.com | 703-268-2712

**BOB BROWNING**  
bbrowning@klnb.com | 703-268-2717

# HOUSING

# COSBY CROSSING


1516 & 15200 HULL STREET ROAD, CHESTERFIELD, VA 23832, CHESTERFIELD COUNTY


Chesterfield  
Chesterfield County | Virginia

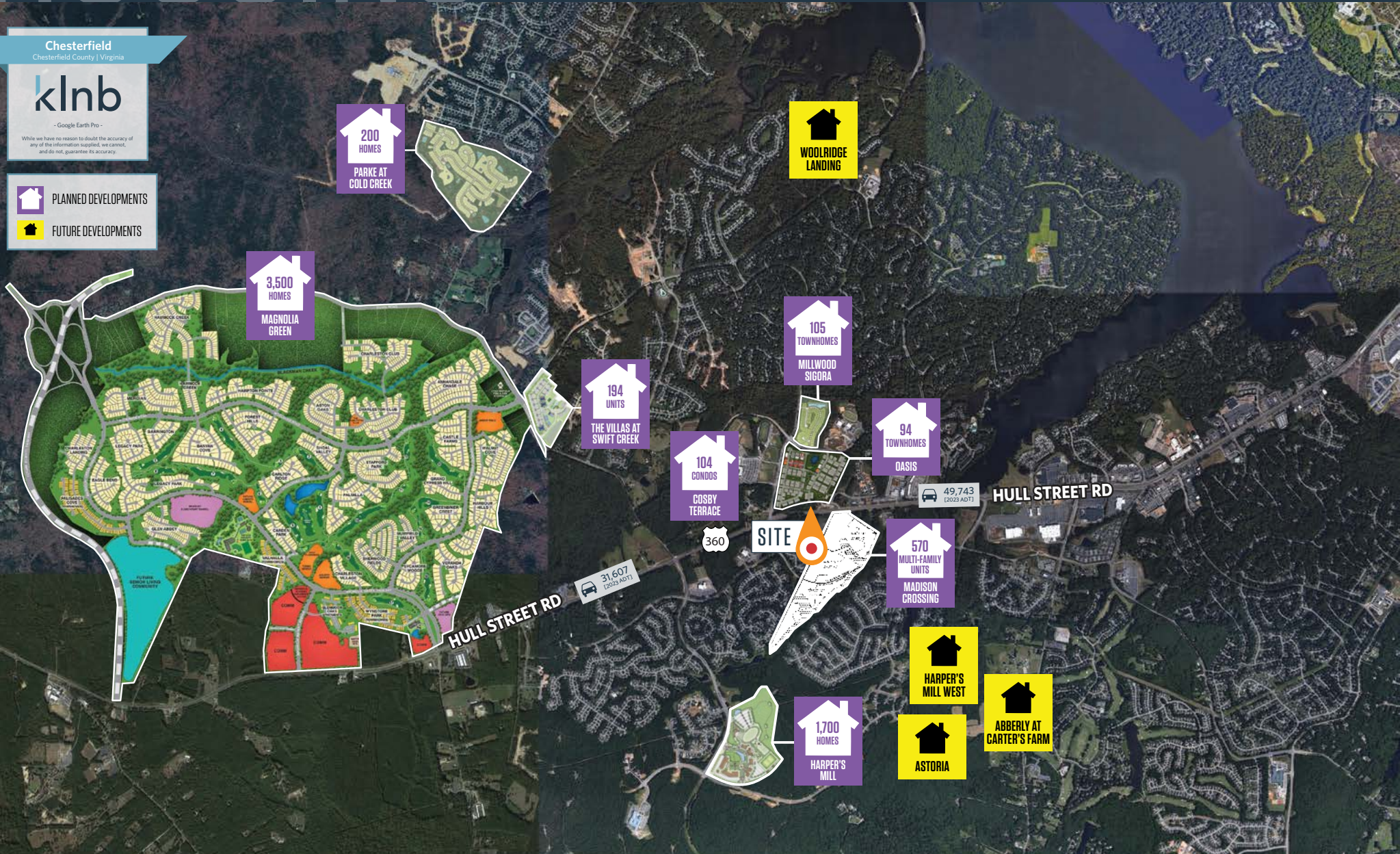
**klnb**

- Google Earth Pro -

While we have no reason to doubt the accuracy of any of the information supplied, we cannot, and do not, guarantee its accuracy.

 PLANNED DEVELOPMENTS

 FUTURE DEVELOPMENTS



**BO GALLES**

bgalles@klnb.com | 703-268-2712

**BOB BROWNING**

bbrowning@klnb.com | 703-268-2717

**klnb**

# COSBY CROSSING

1516 & 15200 HULL STREET ROAD, CHESTERFIELD, VA 23832, CHESTERFIELD COUNTY



**COSBY VILLAGE SQUARE**  
Publix  
AutoZone

**COSBY VILLAGE**  
Pet Paradise  
Panera BREAD  
HEARTLAND

94 TOWNHOMES  
OASIS

**COSBY CROSSING**

KinderCare  
LEARNING CENTERS

**WOODLAKE COMMONS SHOPPING CENTER**  
burn boot camp  
ABC  
Fest  
MR. PEFF

FUTURE SIGNALIZED INTERSECTION

ALDI  
virginia tire & auto

the Y

570 MULTI-FAMILY UNITS  
MADISON CROSSING

TRACT "A"  
27.96 AC.

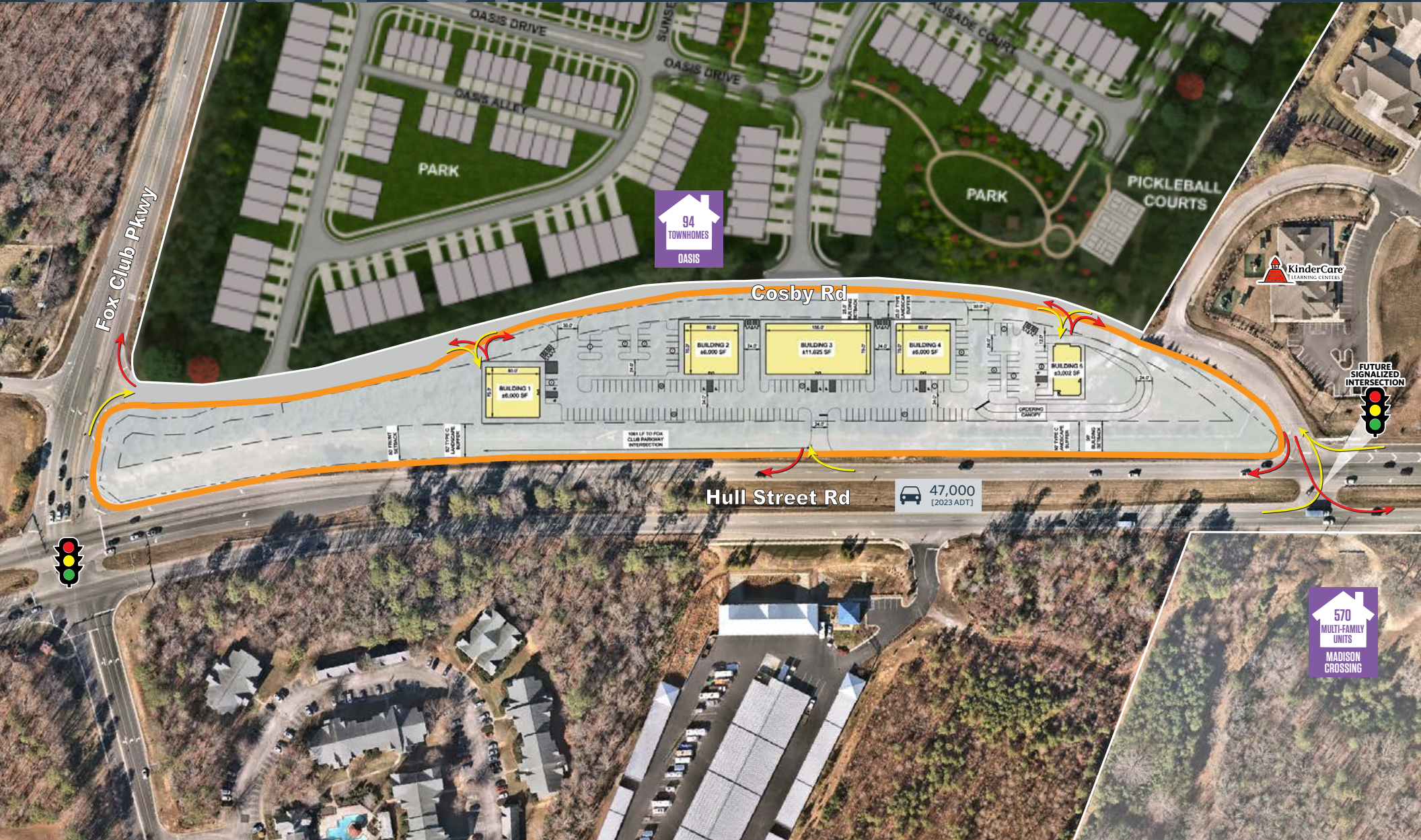
TRACT  
24.27 AC

C/A ASHBROOK PARKWAY  
APPROXIMATE ALIGNMENT

# CLOSEUP

# COSBY CROSSING

1516 & 15200 HULL STREET ROAD, CHESTERFIELD, VA 23832, CHESTERFIELD COUNTY



**BO GALLES**

bgalles@klnb.com | 703-268-2712

**BOB BROWNING**

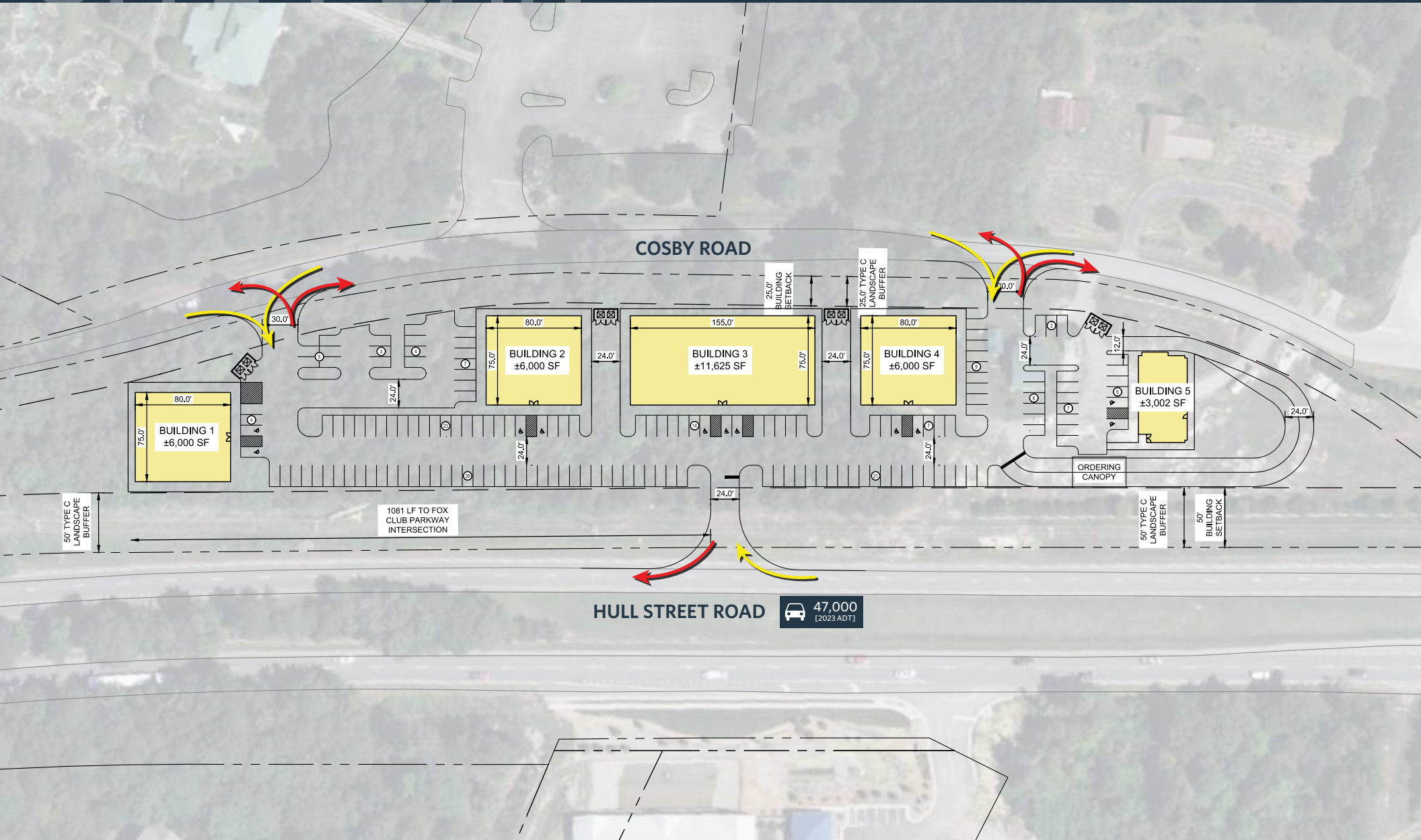
bbrowning@klnb.com | 703-268-2717



# SITE PLAN

# COSBY CROSSING

1516 & 15200 HULL STREET ROAD, CHESTERFIELD, VA 23832, CHESTERFIELD COUNTY



**BO GALLES**

bgalles@klnb.com | 703-268-2712

**BOB BROWNING**

bbrowning@klnb.com | 703-268-2717



# RENDERINGS | COSBY CROSSING

1516 & 15200 HULL STREET ROAD, CHESTERFIELD, VA 23832, CHESTERFIELD COUNTY



**BO GALLES**

[bgalles@klnb.com](mailto:bgalles@klnb.com) | 703-268-2712

**BOB BROWNING**

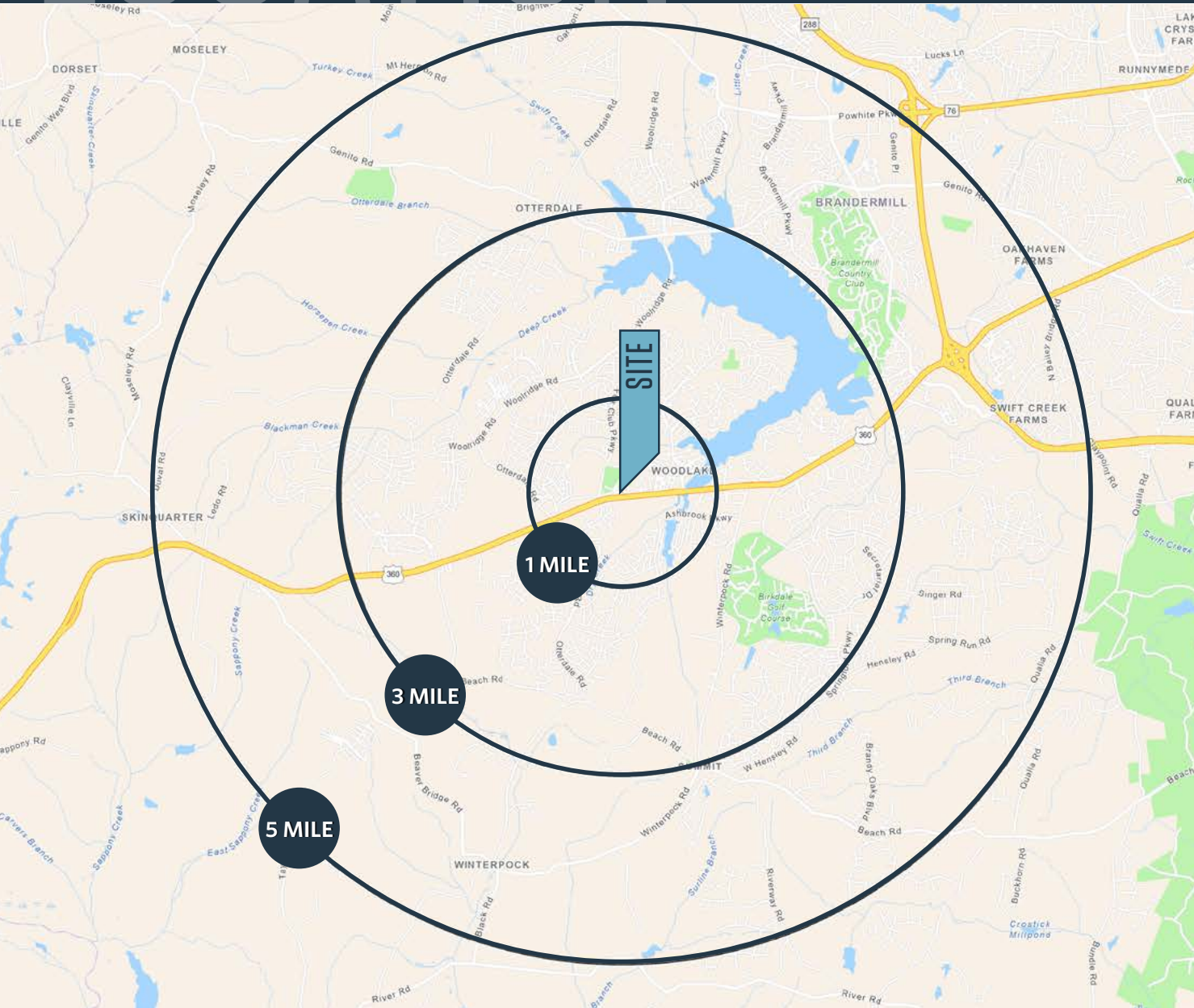
[bbrowning@klnb.com](mailto:bbrowning@klnb.com) | 703-268-2717

**klnb**

# LOCATION

# COSBY CROSSING

1516 & 15200 HULL STREET ROAD, CHESTERFIELD, VA 23832, CHESTERFIELD COUNTY



## DEMOGRAPHICS | 2024:

	1-MILE	3-MILE	5-MILE
Population	7,717	44,890	84,137
Daytime Population	2,022	11,018	24,536
Households	2,663	15,137	30,052
Average HH Income	\$155,741	\$175,575	\$164,722

[CLICK TO DOWNLOAD DEMOGRAPHIC REPORT](#)

## TRAFFIC COUNTS | 2023:

Hull Street Road	38,978 ADT
Fox Club Parkway	4,390 ADT

**BO GALLES**

bgalles@klnb.com | 703-268-2712

**BOB BROWNING**

bbrowning@klnb.com | 703-268-2717





# COSBY CROSSING

15516 & 15200 HULL STREET ROAD, CHESTERFIELD, VA 23832, CHESTERFIELD COUNTY

## FOR MORE INFORMATION, PLEASE CONTACT:

### **BO GALLES**

bgalles@klnb.com  
703-268-2712

### **BOB BROWNING**

bbrowning@klnb.com  
703-268-2717

8065 Leesburg Pike, Suite 700, Tysons, VA 22182

.....

## klnb.com



[instagram.com/klnbcre](https://www.instagram.com/klnbcre)



[linkedin.com/company/klnb](https://www.linkedin.com/company/klnb)



[facebook.com/KLNBCRE](https://www.facebook.com/KLNBCRE)

**CLICK TO VIEW PROPERTY WEBSITE**

While we have no reason to doubt the accuracy of any of the information supplied, we cannot, and do not, guarantee its accuracy. All information should be independently verified prior to a purchase or lease of the property. We are not responsible for errors, omissions, misuse, or misinterpretation of information contained herein and make no warranty of any kind, express or implied, with respect to the property or any other matters.