

Cheadle Place

BizSpace Cheadle

A fresh, flexible workspace equipped with modern amenities located in Greater Manchester.





Welcome to Cheadle Place

BizSpace Cheadle Place is a modern, recently refurbished business centre located in Greater Manchester, ideal for small, medium, and growing businesses. It offers a variety of office spaces to rent, from private offices to open-plan workspaces, along with meeting rooms and excellent amenities such as on-site parking and 24-hour access.

Conveniently situated near Cheadle town centre and just a short drive from Stockport and is easily accessible by car, rail, and bus, with Manchester Airport only a 10-minute drive away.

The location also boasts proximity to local amenities, including restaurants, cafés, shops, and banks, making it an ideal choice for businesses looking for a vibrant and well-connected workspace.



ESG

We have fully integrated our efforts to align with a wider ESG programme of our parent company, Sirius Real Estate. This has formalised our efforts to establish clear priorities and objectives. Together, we aim to meet our ambitious goals and demonstrate accountabilities for all our activities.



Our Products

Managed Offices

Size range: 108 - 2.900sqft



As a managed office space, the fee you pay covers your room, and you have access to all the facilities and amenities our business centre boasts.

Serviced Offices

Size range: 108 - 2.900sqft



A serviced office means one all-inclusive monthly bill covering everything you need, including Wi-Fi, utilities, cleaning, and reception staff.

Meeting Room

Number of people: 8



BizSpace Cheadle offers a medium-sized meeting room, suitable for up to 8 people, with complimentary Wi-Fi, interactive TV, and unlimited refreshments.

Virtual Office

Benefits: Secure mail handling



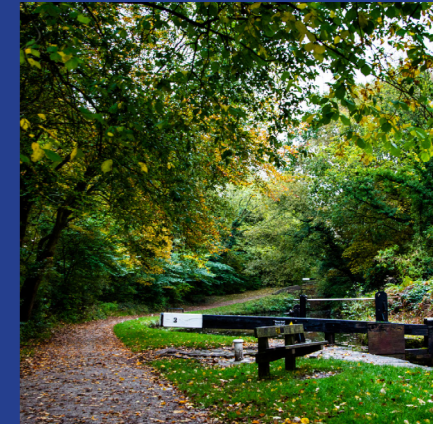
Including a dedicated business address, and secure mail handling, ideal for companies needing a professional presence without a physical office.

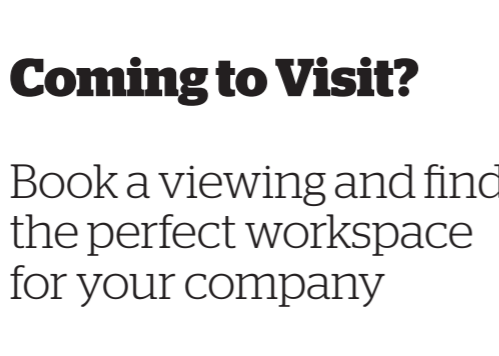
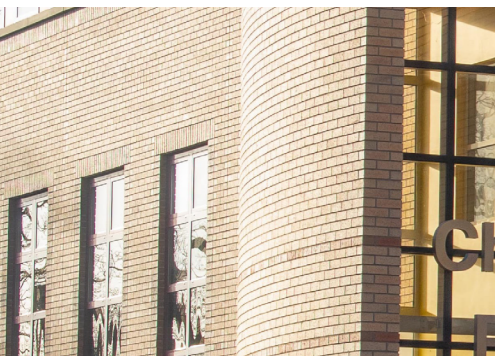
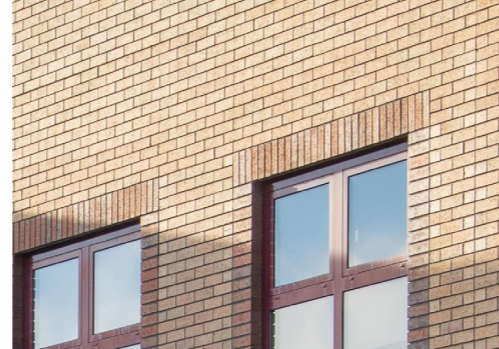


BizSpace Cheadle is situated immediately off Roscoe's Roundabout and Junction 2 of the M60, with direct access to the M56, ensuring excellent connectivity to the surrounding areas and Manchester Airport - which is only a 10-minute drive away.

The location also boasts proximity to local amenities, including restaurants, cafés, shops, and banks, providing a vibrant environment for businesses.

Additionally, the iconic 19th-century Abney Hall and wonderful wildlife and wetlands, is nearby, offering a perfect spot for a lunchtime walk or a run.





Where to find us?
 Cheadle Place, Stockport
 Road, Stockport, Cheshire,
SK8 2JX

Give us a call:
0800 9121580

Get in touch:
info@bizspace.co.uk



By car: We're immediately next to J2 of the M60, with direct access to the M56.



By rail: The closest stations are Gately, 1 mile away, and Stockport, 2 miles away.



By bus: The nearest bus stops are Boundary bridge or Councillor Lane, served by the number 11 bus.



By air: Manchester Airport is a 10-minute drive away, along the M56, 30-minutes on the train.



Key features

 Air Con + Heating

 DDA compliant

 Breakout area

 On-site parking

 24-hour access

 Communal kitchen

ve the smell
f optimism
the morning

Don't just take our word for it...

See what our customers have to say:

BizSpace is rated
Excellent

Based on 655 reviews



★ Trustpilot



Asad Raza

Nice and quiet place and lots of friendly faces



Edward Crawford

Great offices and great management. Everything has been very smooth since we moved in. Would definitely recommend!



Electric-Call

Great service , great decor , Biz space Cheadle.



My Medical Secretary

As a new business, Bizspace offered us affordable office space with parking, in a perfect location and the IT facilities that we required. In the time we have been here all the staff have been very helpful and if we have any problems the site Manager is always on hand to help.



Kyle

I love this workspace! It's clean, bright and really one of the best spaces to work I know.



**We hope to see
you soon!**

Cheadle Place, Stockport
Road, Stockport, Cheshire,
SK8 2JX