



Spaces Park Row, Leeds, 6-7 Park Row, Leeds, LS1 5HD

Serviced office spaces TO LET

- Major Transport Links
- Meeting Rooms
- Bicycle Storage
- [///patio.league.impact](http://patio.league.impact)
- City/Town Centre
- Wheelchair Accessible
- Fitness & Gym

Summary

Available Size	1 to 15,476 sq ft
Business Rates	Upon Enquiry
EPC Rating	B

Description

You're guaranteed to cultivate your next big idea across this suite of private offices, chic meeting rooms and inspiring communal spaces- perfect for networking with-minded professionals. This recently refurbished building boasts some serious kerb appeal with its impressive, contemporary glazed glass walling and chic double-height reception.

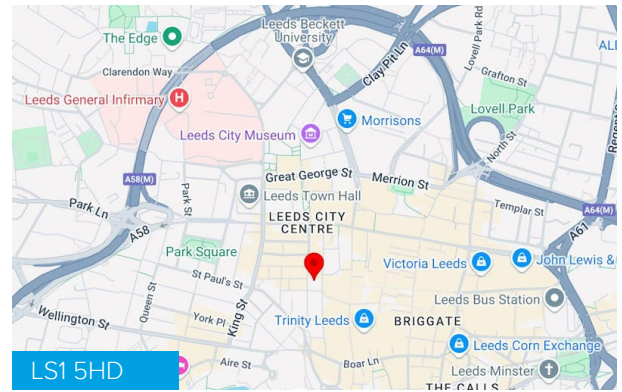
As well as natural light in abundance, you'll benefit from impressive city views, while high-speed WiFi and friendly support staff ensure your product stays at its peak. Commercial minds and contemporary styling meet flexible workspace at Park Row.

Location

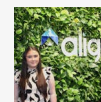
Spaces, Park Row is located in the City Centre of Leeds along Park Row just off The Headrow and Infirmary Street. Transport links are excellent with Headrow A bus stop (42 and x10) located along The Headrow. Access to Leeds Train Station is 0.9-miles away, providing access around the city and to larger cities. There are bars and restaurants within walking distance.

The A58(M) is to the west of the site, which connects to the M621 South and the M64 North which both provide access to the A1(M) North and South, offering wider linkages to large cities such as Newcastle, Manchester and London.

Leeds Bradford Airport is 8.4 miles North West of the city.



Viewing & Further Information



Caitlin Parker

01609 797 330

caitlin.parker@alignpropertypartners.co.uk

View Properties Here
www.alignpropertypartners.co.uk

