

# Water Street Plaza

2,176 SF Available

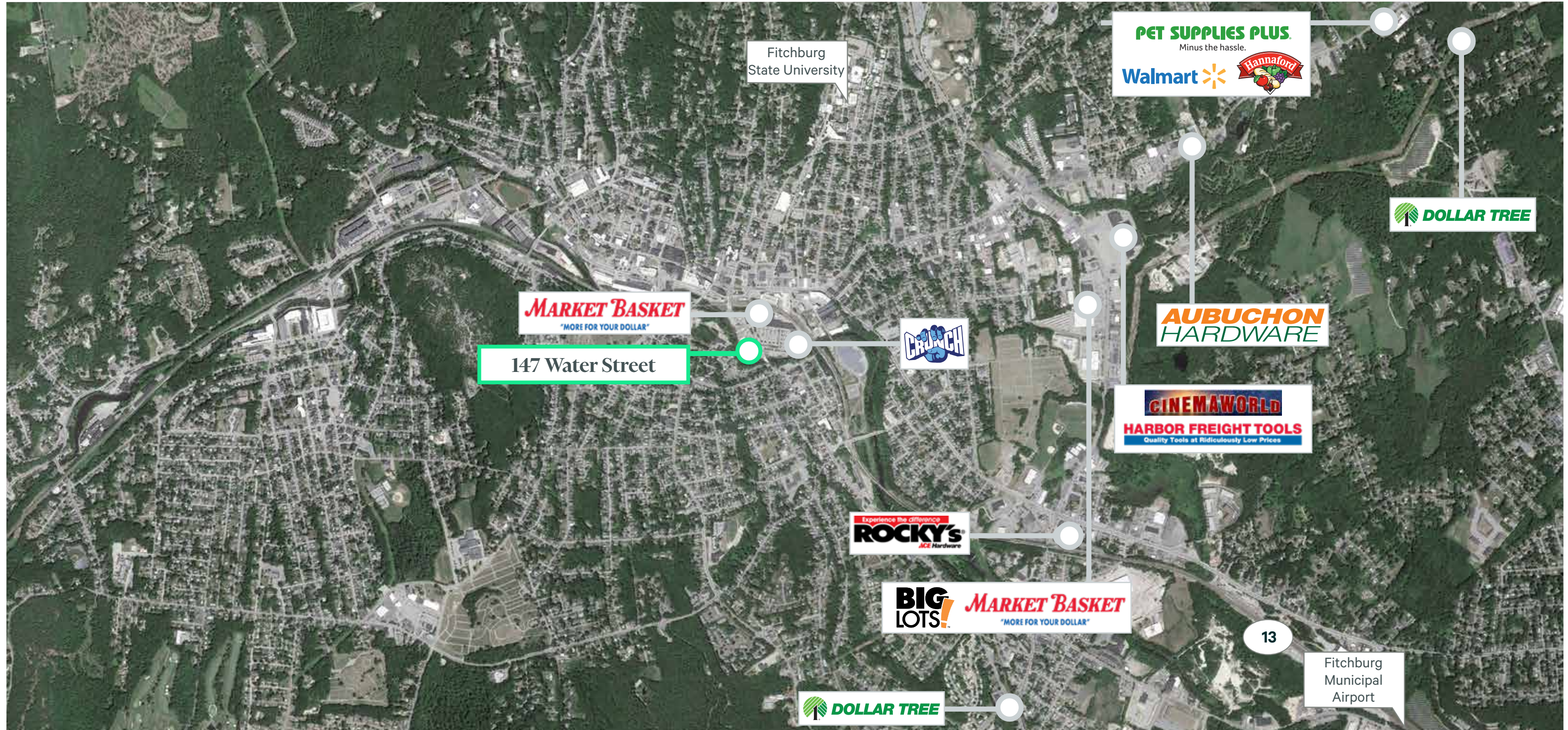
147 Water Street  
Fitchburg, Massachusetts



## Features

- + High visible endcap with drive through on Route 12 in Fitchburg, MA
- + Shadow anchor to Central Plaza, a Market Basket and Crunch Fitness shopping center
- + Join Family Dollar, Domino's and Green Leaf Dispensary
- + Prominent pylon sign
- + Ample parking field allows for easy customer access

Retail Market

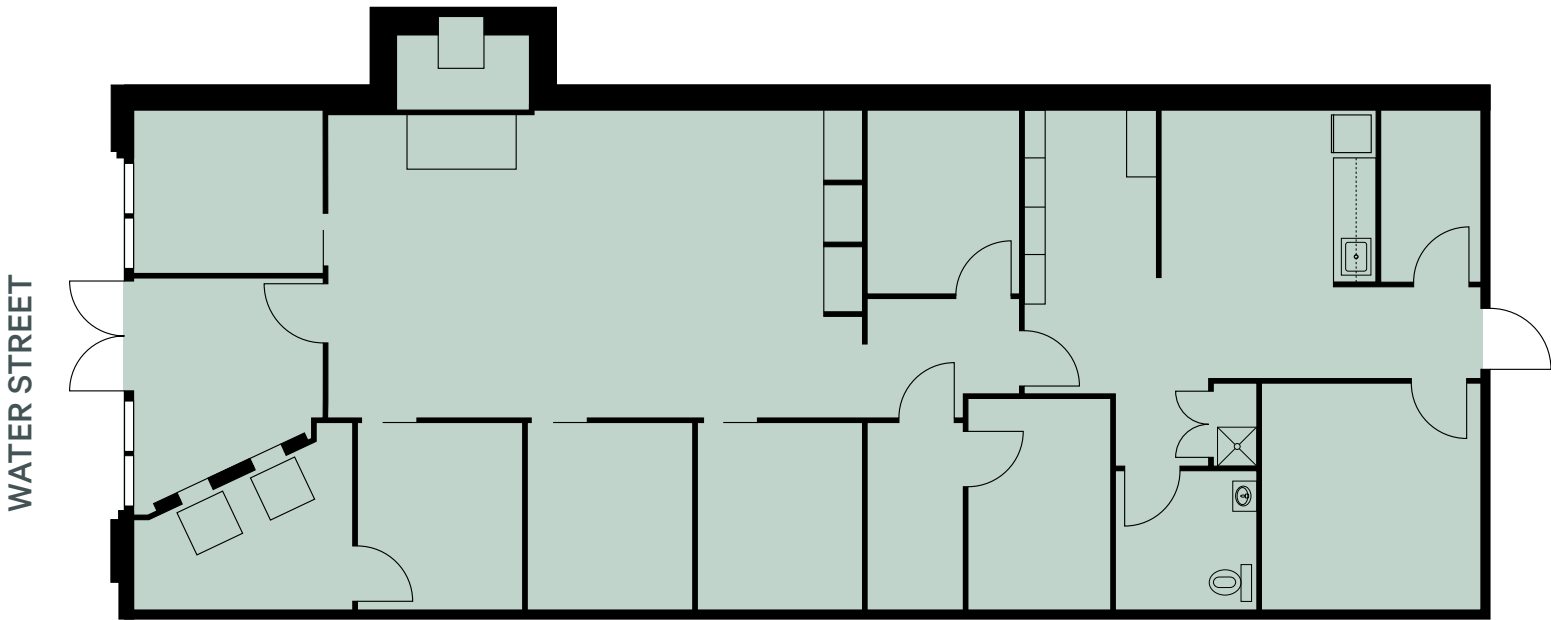


2023 Demographics	1 Mile	3 Miles	5 Miles	7 Miles
Estimated Population	20,122	38,321	53,207	68,004
Estimated Households	7,584	14,910	21,054	26,996
Estimated Average Household Income	\$69,404	\$78,567	\$88,155	\$94,498
Estimated Daytime Population	17,720	33,152	45,386	60,726

# Water Street Plaza

147 Water Street | Fitchburg, Massachusetts

# For Sublease



## Contact Us

### Rob Robledo

Senior Vice President  
+1 617 912 6869  
rob.robledo@cbre.com

### Roberto Cordero

Senior Associate  
+1 617 912 6818  
roberto.cordero@cbre.com

© 2023 CBRE, Inc. All rights reserved. This information has been obtained from sources believed reliable, but has not been verified for accuracy or completeness. You should conduct a careful, independent investigation of the property and verify all information. Any reliance on this information is solely at your own risk. CBRE and the CBRE logo are service marks of CBRE, Inc. All other marks displayed on this document are the property of their respective owners, and the use of such logos does not imply any affiliation with or endorsement of CBRE. Photos herein are the property of their respective owners. Use of these images without the express written consent of the owner is prohibited.