



11819 METRO PKWY, UNITS B & C | FORT MYERS, FL 33966

24,750 – 51,194 SF IN THE METRO INDUSTRIAL CORRIDOR

FOR LEASE

CONTACT

Justin Ankney, CCIM

239-933-5594

justin@mayhughcommercial.com

In Consultation With

Chase Mayhugh, SIOR, CCIM

Secure, Functional Warehouse Space in Metro Parkway Corridor

Available immediately, this 51,194± SF space offers a rare opportunity in Fort Myers' coveted Metro Industrial Corridor between Daniels Parkway and Colonial Blvd. Located within a 119,000 SF complex on 7.36 acres, the site is fully secured with a 6' chain-link fence and electric gate.

These units are optimized for efficiency with multiple truck wells, 14' x 14' overhead doors, drive-around access, 3-phase power, and an ESFR sprinkler system—ideal for distribution, logistics, or manufacturing operations. Don't miss your chance to establish or expand in one of the region's most strategic industrial locations.

PROPERTY DETAILS

LEASE RATE \$9.50 NNN + \$2.90 CAM/OPEX

AVAILABLE SF 24,750 – 51,194± SF

AVAILABLE Available immediately

POWER 3-Phase

CLEARANCE 18' – 26'

SPRINKLER ESFR

ZONING IL (LCO)



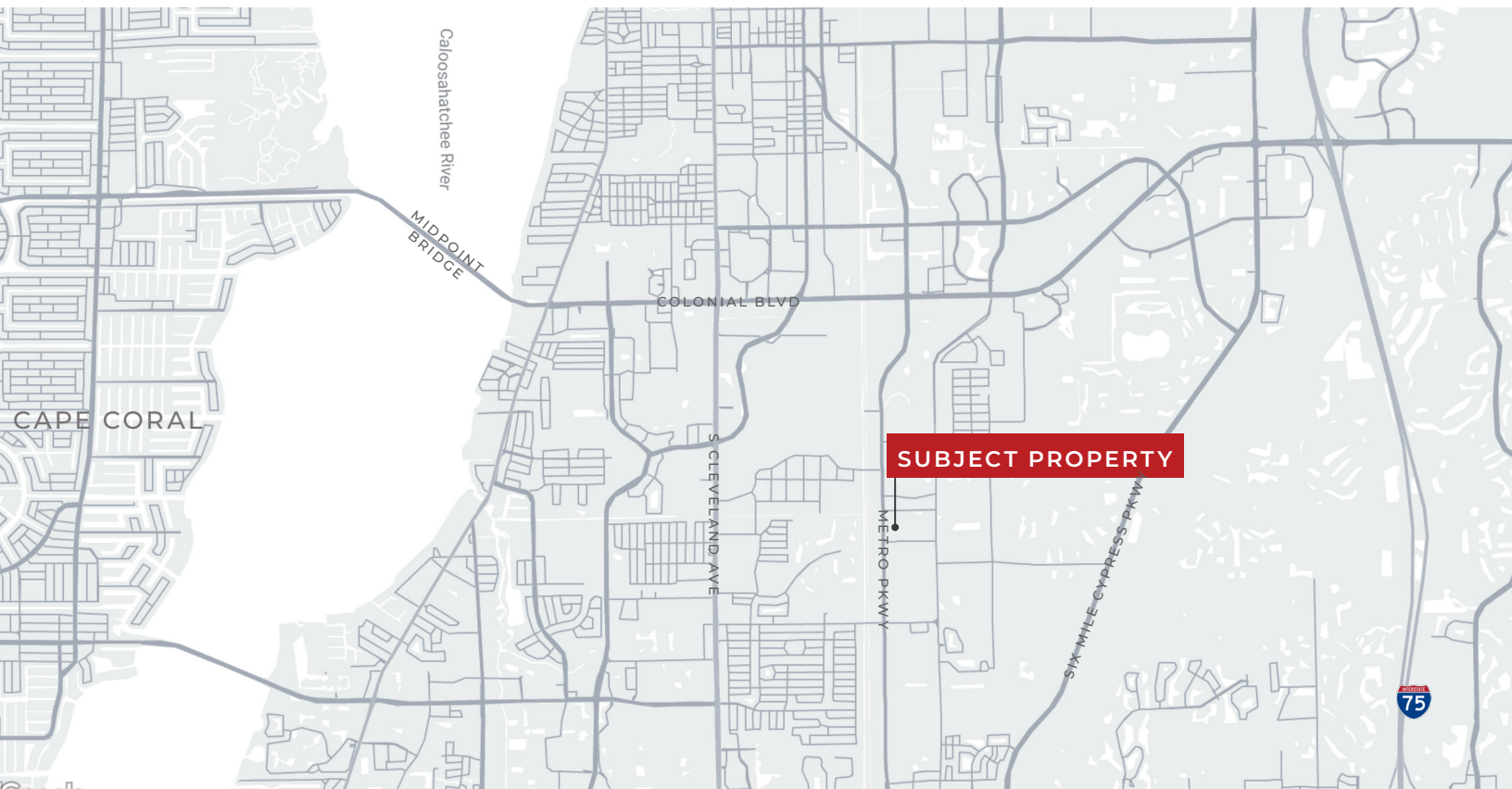
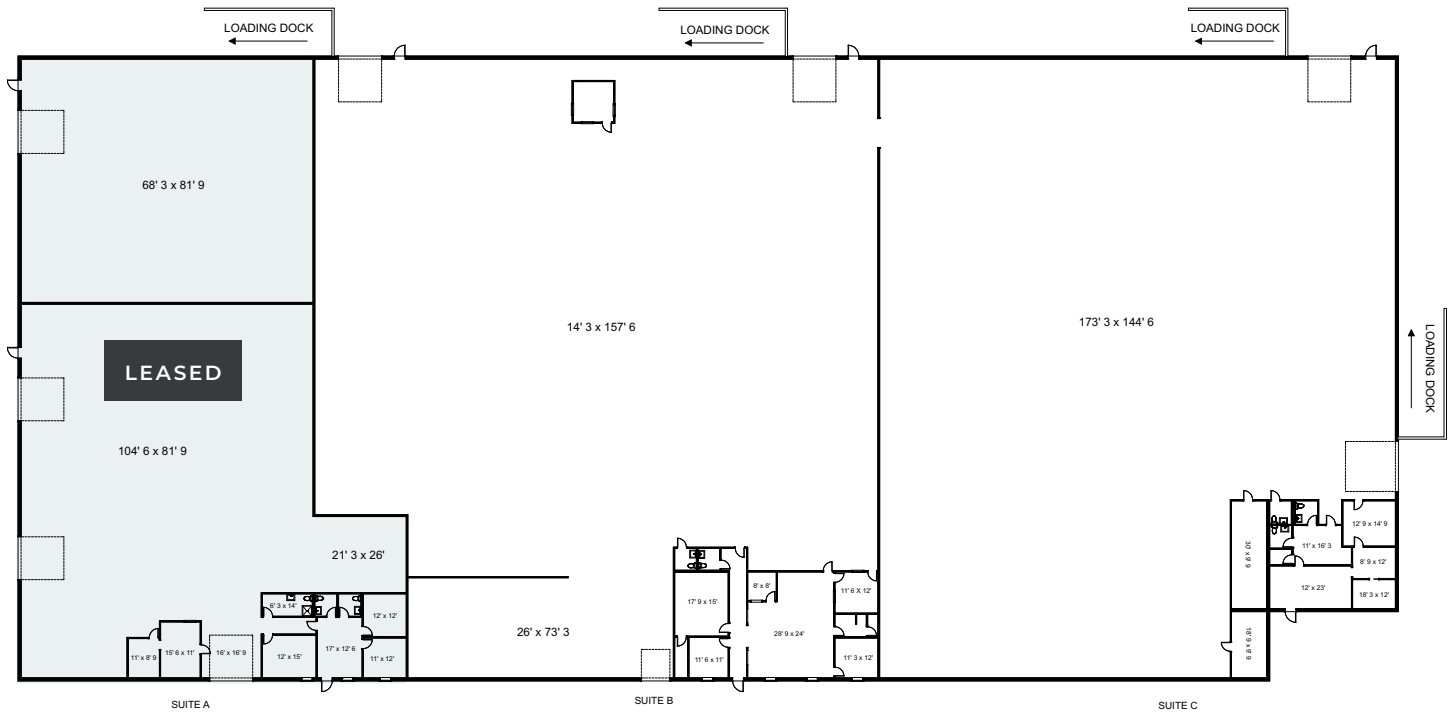
MAYHUGH
COMMERCIAL ADVISORS

13099 S. Cleveland Ave. Suite 410
Fort Myers, FL 33907

MAYHUGHCOMMERCIAL.COM



FLOORPLAN



This marketing brochure serves as a reference for informational purposes only and does not constitute an offer for sale or lease, nor does it serve as a solicitation for an offer to purchase or lease. While the information contained herein is believed to be reliable, its accuracy, completeness, or reliability cannot be guaranteed. Prospective buyers or lessees are encouraged to conduct their own investigations and due diligence to verify the information provided. All descriptions, dimensions, conditions, permissions for use, and other details are offered in good faith but are subject to verification. No express or implied warranty or representation is made regarding the accuracy of the information herein. The content is subject to errors, omissions, price changes, withdrawal without notice, and any special listing conditions imposed by our principals.