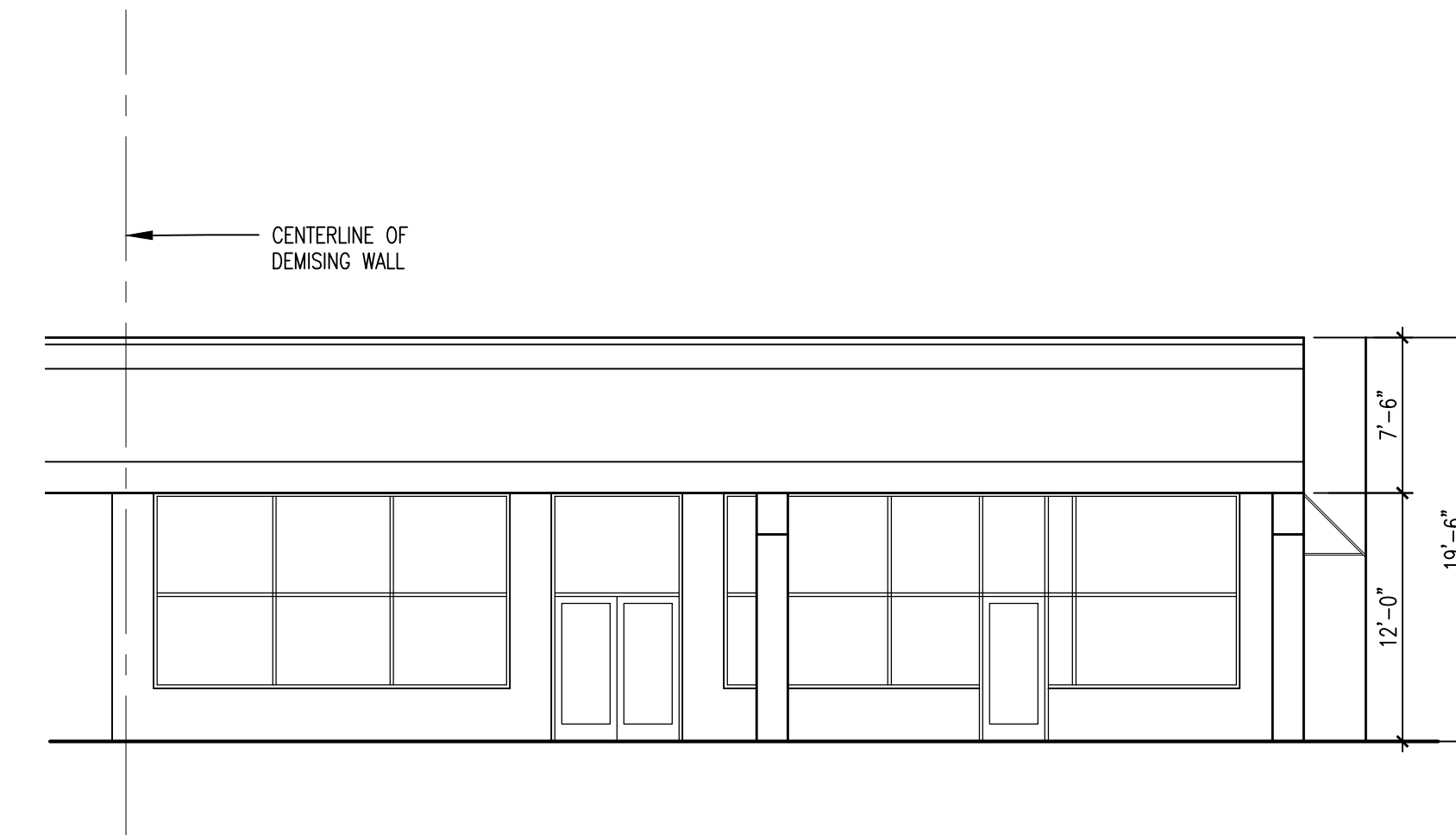
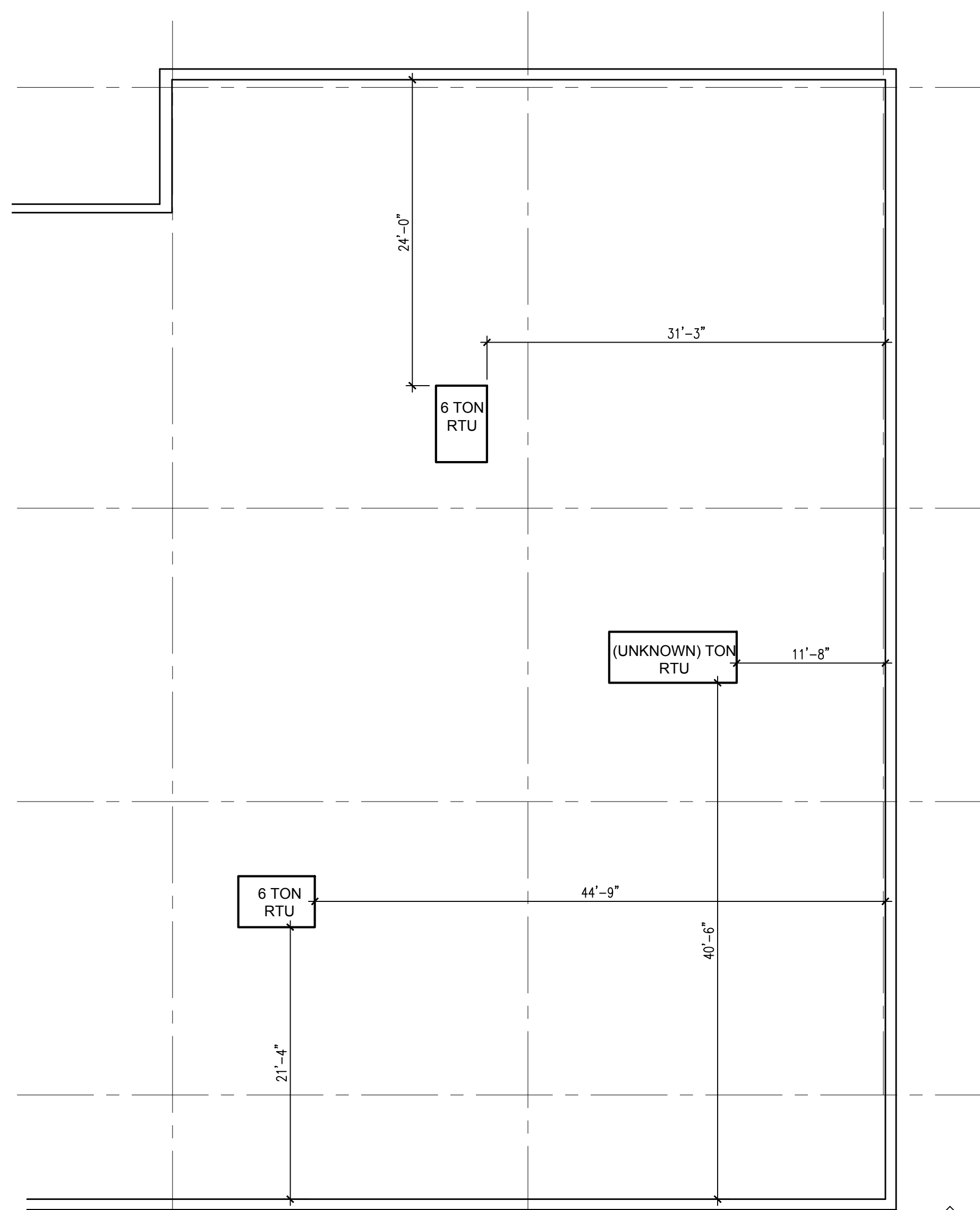




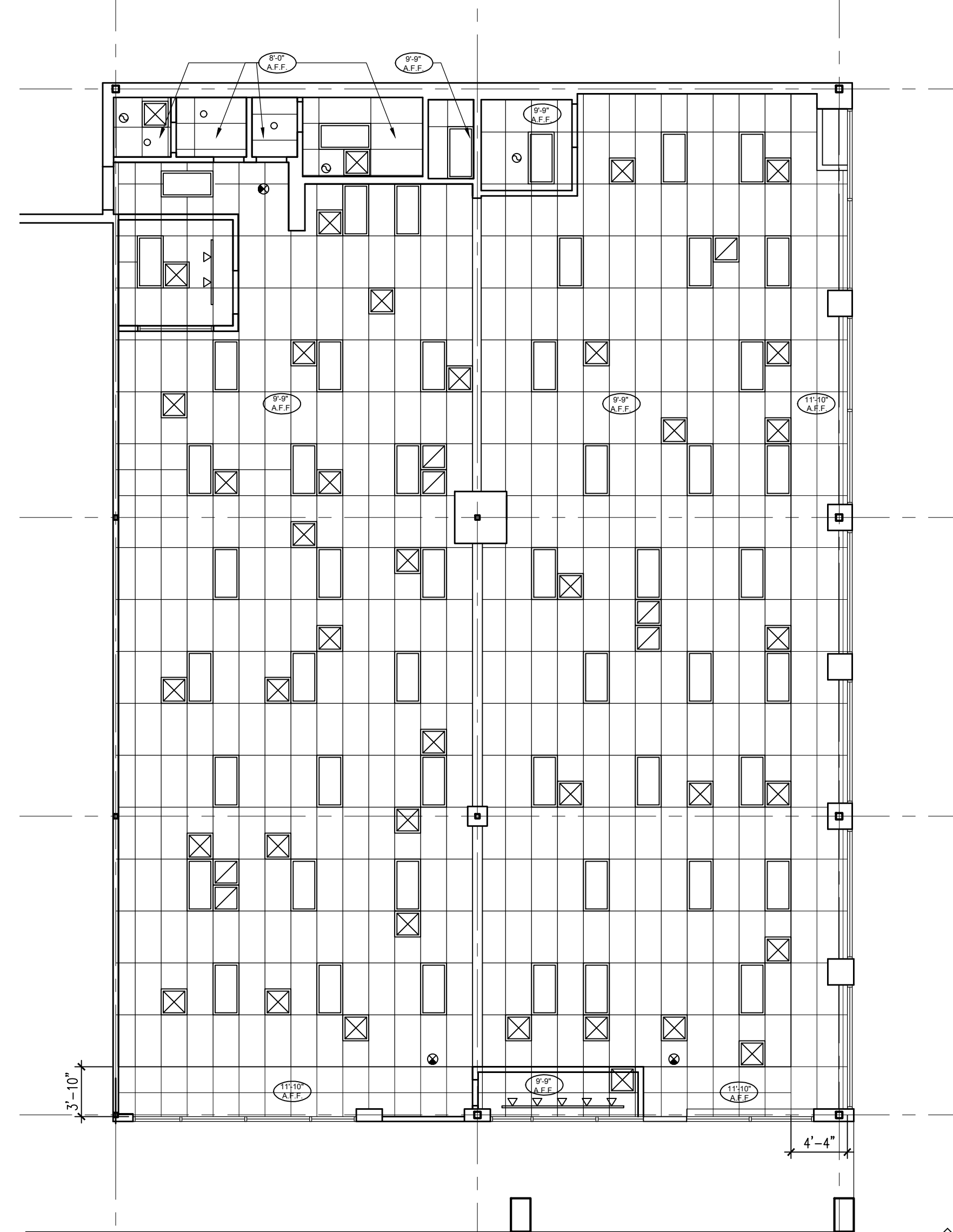
05 NORTH ELEVATION
1/8" = 1'-0"



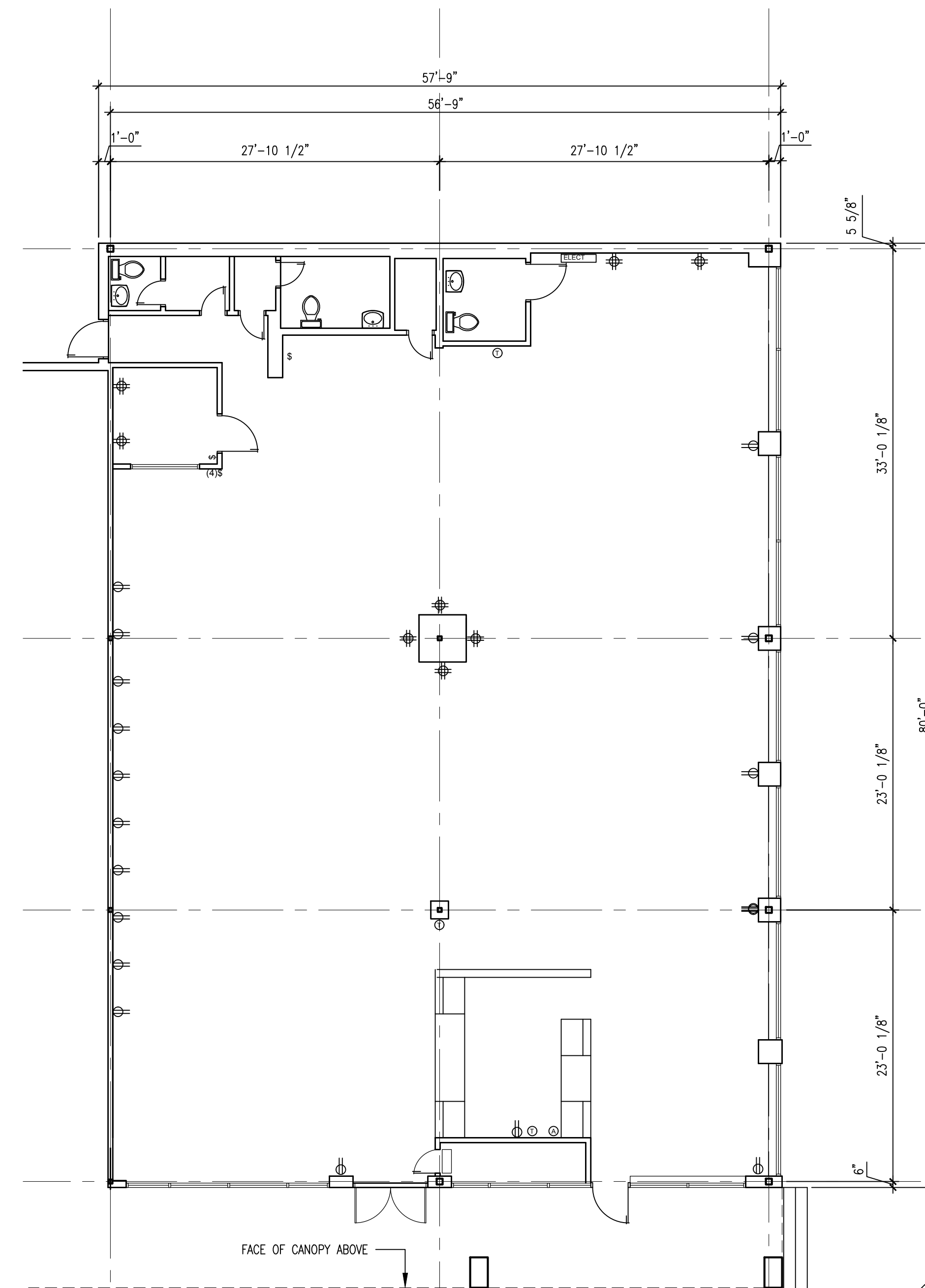
04 PARTIAL WEST ELEVATION
1/8" = 1'-0"



01 ROOF PLAN
1/8" = 1'-0"



02 REFLECTED CEILING PLAN
1/8" = 1'-0"



01 FLOOR PLAN
1/8" = 1'-0"

CEILING & POWER NOTES

- 2' x 4' CEILING GRID
- 2' x 4' RECESSED FLUORESCENT LIGHT
- AIR RETURN
- AIR SUPPLY
- TRACK LIGHT
- RECESSED DOWN LIGHT
- EXIT LIGHT
- EXHAUST FAN
- THERMOSTAT
- ALARM
- QUAD ELECTRICAL OUTLET
- DOUBLE ELECTRICAL OUTLET
- LIGHT SWITCH

OSBORN & VANE ARCHITECTS

2000 Bering Drive, Suite 410
Houston, Texas 77057
713 781 5282
Fax 713 781 5347
Members American Institute of Architects

AS BUILT PLANS

5911 WESTHEIMER ROAD AT FOUNTAIN VIEW
WEST END CAP OF 5901 WESTHEIMER RD
SHOPPING CENTER, HOUSTON, TEXAS 77057

Project No. 20011
Drawn ER
Checked BS

AS BUILT PLANS

Sheet No. A1.0