

For Lease | Medical Office Space

15211 Vanowen Street | Van Nuys | CA

On Valley Presbyterian Hospital Campus



Building Highlights

- On campus at Valley Presbyterian Hospital
- Newly renovated lobby & common areas
- On-site engineer & day porter to tend to maintenance needs
- Conveniently located near the 101 and 405 Freeways
- Additional retail amenities within walking distance
- Tenant Improvement allowance available

This document/email has been prepared by Colliers for advertising and general information only. Colliers makes no guarantees, representations or warranties of any kind, expressed or implied, regarding the information including, but not limited to, warranties of content, accuracy and reliability. Any interested party should undertake their own inquiries as to the accuracy of the information. Colliers excludes unequivocally all inferred or implied terms, conditions and warranties arising out of this document and excludes all liability for loss and damages arising there from. This publication is the copyrighted property of Colliers and /or its licensor(s). © 2025. All rights reserved. This communication is not intended to cause or induce breach of an existing listing agreement.

Contact us

Kevin Fenenbock

Senior Executive Vice President
Lic. 01165115
818.325.4118
kevin.fenenbock@colliers.com

Jacob Mumper

Senior Vice President
Lic. 01908862
818.325.4119
jacob.mumper@colliers.com



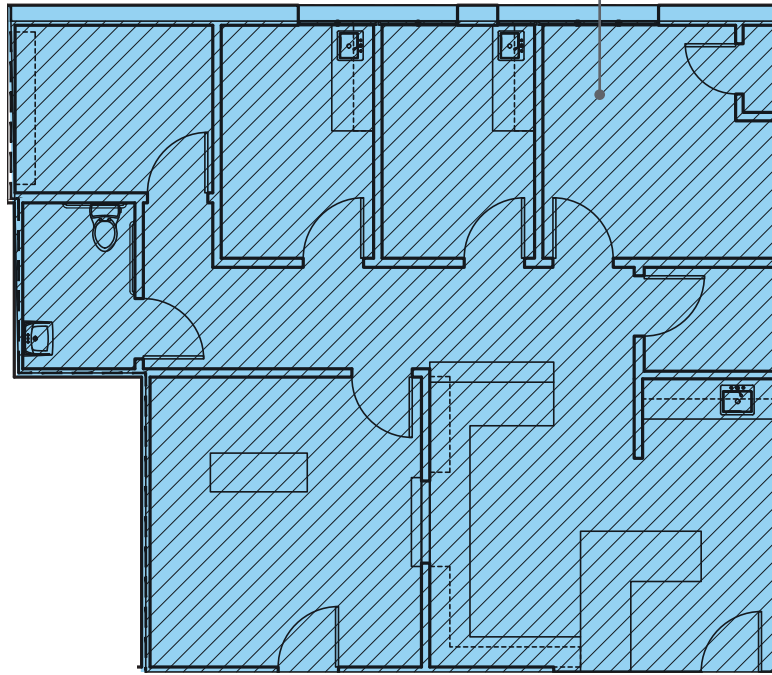
Colliers
6324 Canoga Ave., Suite 100
Woodland Hills, CA 91387
www.colliers.com

Availability Overview



Suite	Size	Availability
209	1,334 SF	Immediately
110	2,324 SF	Immediately

Suite 209 - 1,334 SF



Suite 110 - 2,324 SF

