



THE FIELDS



**CURATED EATS. ELEVATED WELLNESS. DAILY ESSENTIALS.**

**Featuring:** Trader Joe's, Starbucks, OrangeTheory, Laser Away, Perspire Sauna Studio, Patelco Credit Union, Slice House Pizza, Mokkoji Shabu Shabu, The Alley, and Pelicana Chicken!

LEASING BY

 **Lavery Chacón**  
Commercial Real Estate

# EAT. SHOP. PLAY. LIVE.

The Fields is Milpitas' premier lifestyle community with 791 of Silicon Valley's newest multifamily residences and 88,000 SF of retail space. Where luxury and convenience converge, The Fields is the place to be. Come represent the new heart of the second fastest growing city in California.

3

SIGNATURE BUILDINGS

791

LUXURY APARTMENTS

88,000 SF

OF RETAIL SPACE

A true lifestyle epicenter, The Fields is strategically located at Great Mall Parkway and McCandless Drive directly across from the Great Mall. Just two blocks from the Montague Expressway and the Berryessa Bart Station, the Fields is conveniently center between Highways 101 and 880, just South of Highway 237.

Welcome to the new  
Hub of Milpitas!

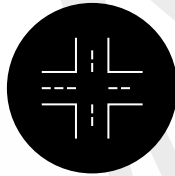
THE FIELDS



# COMMUNITY HIGHLIGHTS



3 signature buildings,  
791 luxury apartments,  
and an 88,000 SF shopping  
district



11-acre site located directly  
across from the Great Mall  
on McCandless Drive



Centrally located between  
Highways 101, 880, and 237, as  
well as Montague Expressway  
& Great Mall Parkway



10-aisle Trader Joe's  
with dedicated  
underground parking



BART's newest Silicon  
Valley hub, Berryessa  
Station, just blocks away



Walking distance to  
±5,000 apartment homes




 25,250 ADT

# GREAT MALL

A SIMON CENTER



791 UNITS

 48,047 ADT

308 UNITS  
303 UNITS  
381 UNITS

MONTAGUE EXPRESSWAY

BART  
**ba**

216 UNITS

S MAIN ST

203 UNITS

720 UNITS

E CAPITOL AVE

468 UNITS

241 UNITS

489 UNITS

580 UNITS

114 UNITS

4

 3,440 ADT

207 UNITS

134 UNITS

207 UNITS

The Fields is in the center of Silicon Valley's burgeoning culture, surrounded by several residential communities in the immediate area, totaling over ±5,362 units.



The Fields includes 791 residential units and 88,000 total SF of retail across four resort-style communities.



TRADER JOE'S

**TURING**

371

RESIDENTIAL UNITS

48,510

RETAIL SF

NOW

AVAILABLE

GREAT MALL PKWY



19,829 ADT

**ELION**

FUTURE

Phase 4

**GRAHAM**

207

RESIDENTIAL UNITS

5,352

RETAIL SF

NOW

AVAILABLE

MCCANDLESS DR



3,440 ADT

**GIDEON**

213

RESIDENTIAL UNITS

10,079

RETAIL SF

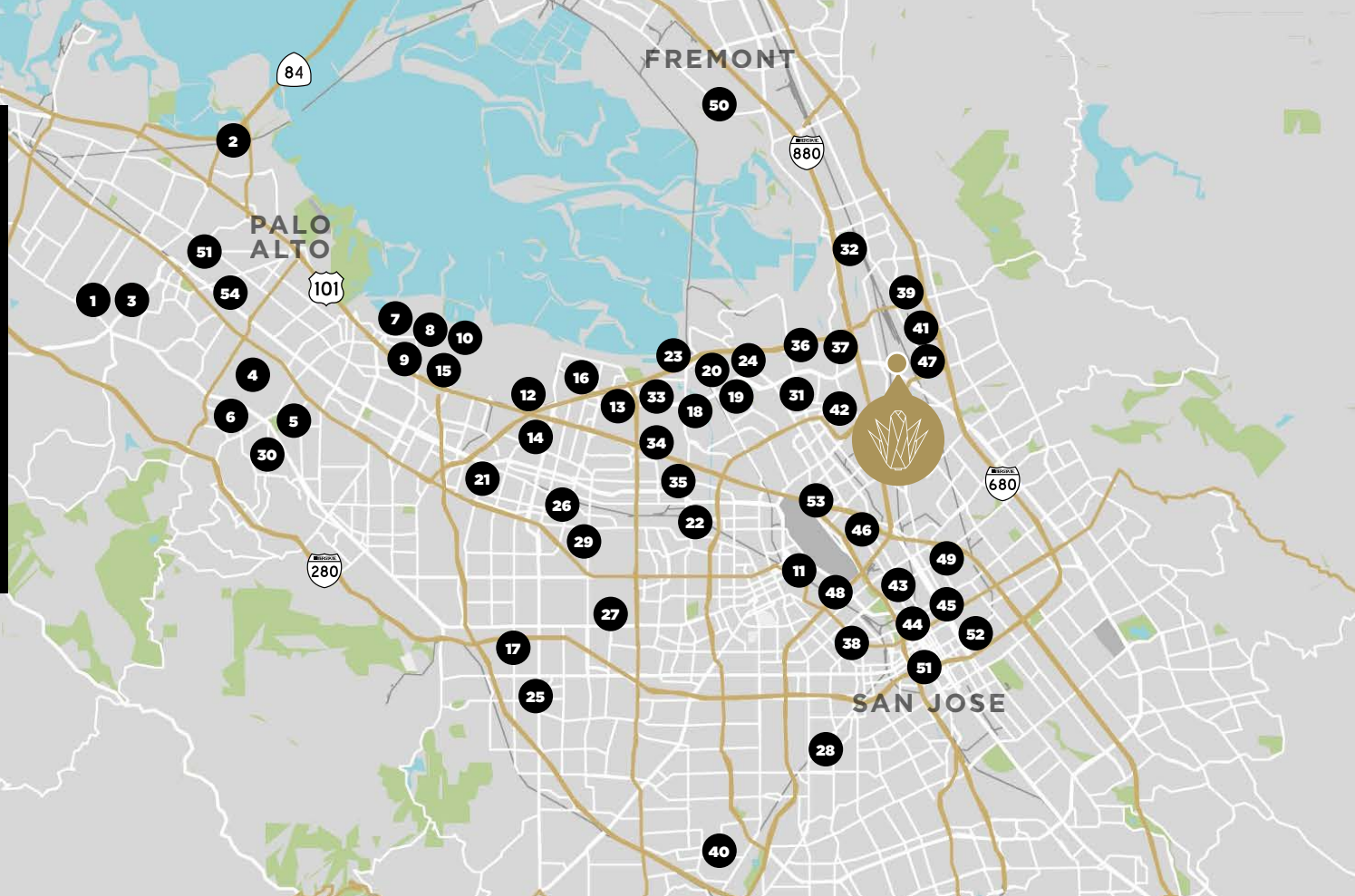
NOW

AVAILABLE



Silicon Valley is home to the world's largest technology corporations as well as thousands of tech start-ups.

As the leading hub of high-tech innovation and development, the region is the largest high-tech manufacturing center in the US.



- |                        |                        |                      |                     |                       |                        |
|------------------------|------------------------|----------------------|---------------------|-----------------------|------------------------|
| 1 Stanford Health Care | 10 LinkedIn            | 19 Levi's Stadium    | 28 eBay             | 37 Cisco              | 46 TDK                 |
| 2 Facebook             | 11 Yahoo               | 20 Marvell           | 29 Valley Medical   | 38 Santa Clara County | 47 LifeScan            |
| 3 Stanford University  | 12 Lockheed Martin     | 21 McAfee            | 30 Tesla            | 39 Achievo            | 48 Roku                |
| 4 Hewlett-Packard      | 13 Symantec            | 22 Applied Materials | 31 SunPower         | 40 Netflix            | 49 City of San Jose    |
| 5 VMware               | 14 Synopsys            | 23 Flex              | 32 Advantech        | 41 Magnum             | 50 Logitech            |
| 6 Palo Alto Medical    | 15 Juniper Networks    | 24 Brocade           | 33 Global Foundries | 42 Cadence            | 51 Ernst & Young       |
| 7 Intuit               | 16 NetApp              | 25 Seagate           | 34 Infineon         | 43 Zoom               | 52 San Jose University |
| 8 Google               | 17 Apple               | 26 Intel             | 35 Ericsson         | 44 Adobe              | 53 PayPal              |
| 9 Microsoft            | 18 Silicon Valley Bank | 27 Nvidia            | 36 SanDisk          | 45 Accenture          | 54 Houzz               |



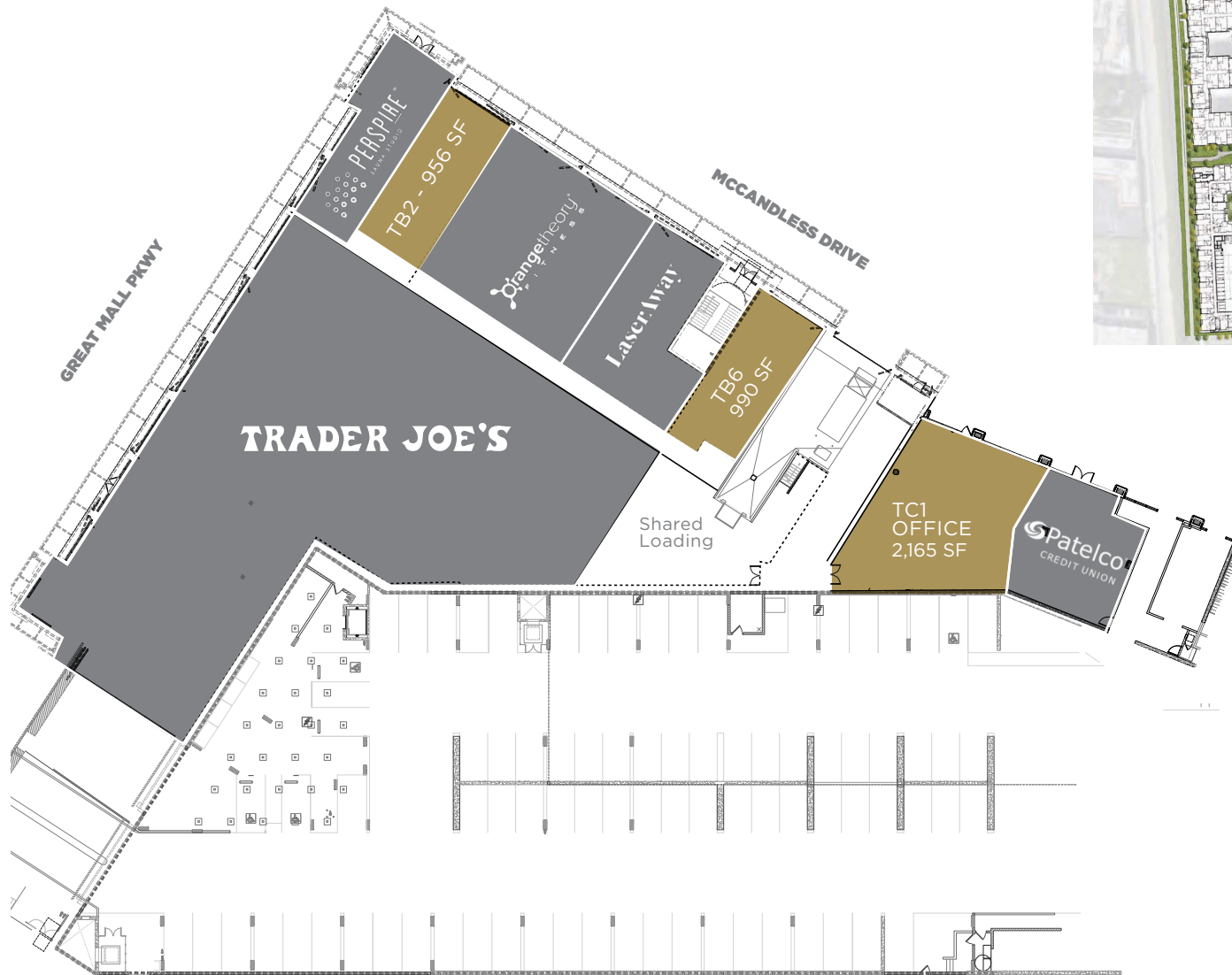
# PHASE 1

TURING ZONE A | 5,102 SF AVAILABLE



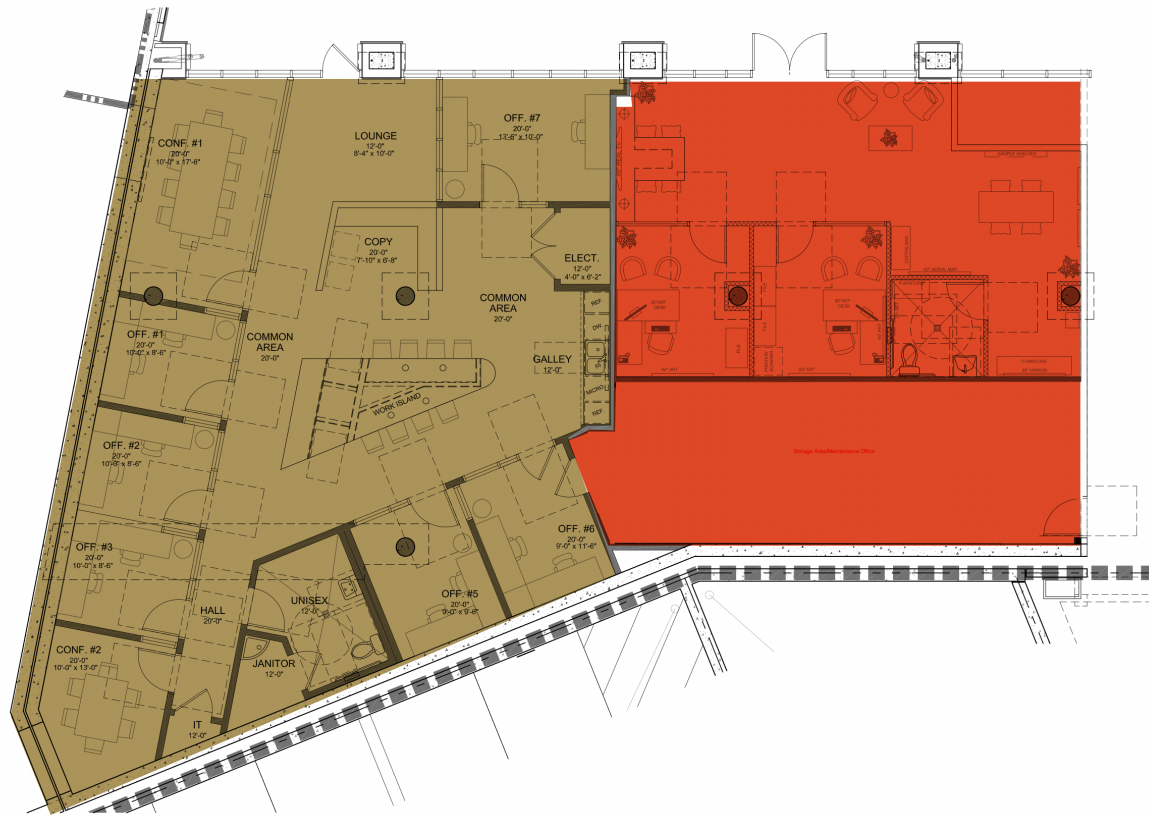
# PHASE 1

TURING ZONE B | 956 SF - 2,165 SF AVAILABLE



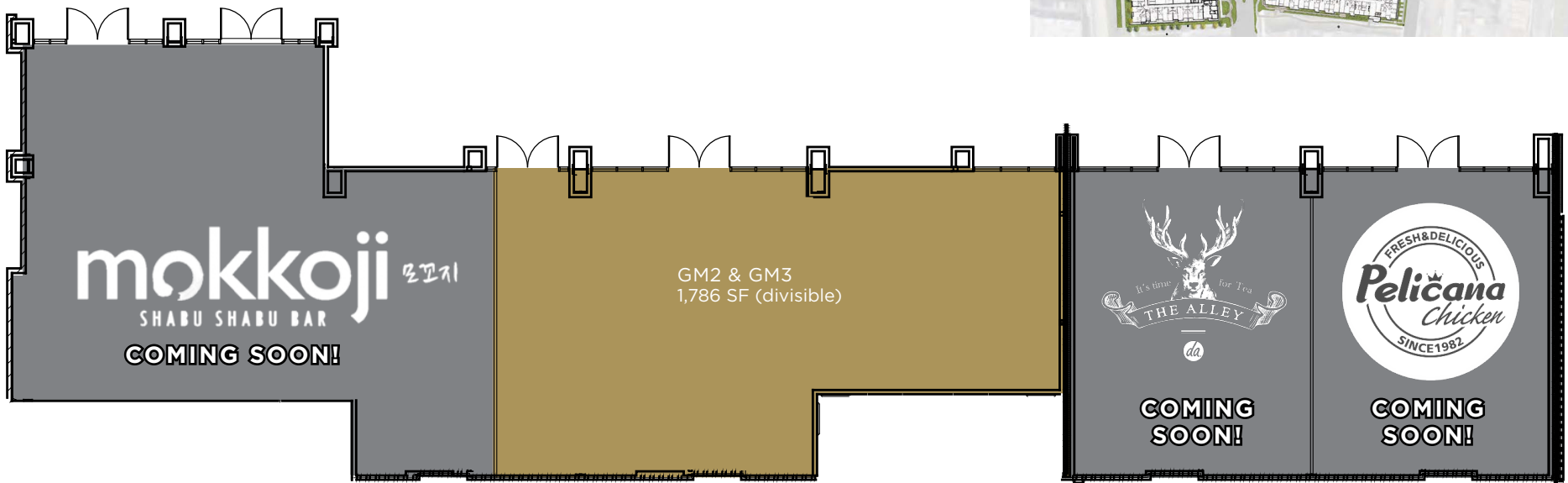
# PHASE 1

TC1 OFFICES | 2,581 SF AVAILABLE



# PHASE 2

GRAHAM | 1,786 SF AVAILABLE



# PHASE 3

GIDEON | 800 SF - 10,079 SF AVAILABLE



# AVAILABILITIES

## PHASE 1 - NOW OPEN

TURING ZONE A & B

**Space**      **SF**

TA1 - TA2    5,102 (divisible)

---

TB2            956

---

TB6            990

---

TC1            2,165

---

## PHASE 2 - NOW OPEN

GRAHAM

**Space**      **SF**

GM2-GM3    1,786 (divisible)

---

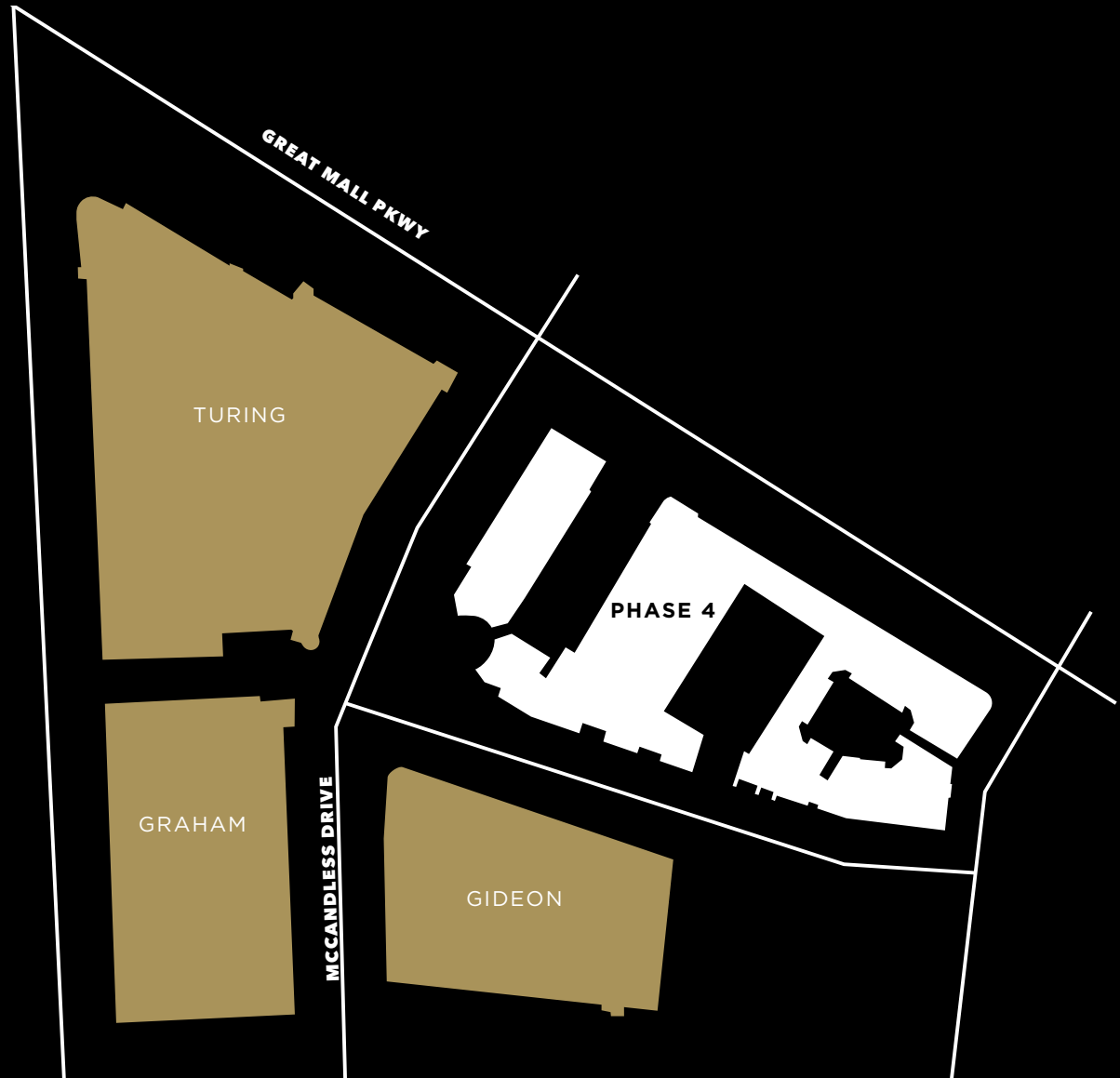
## PHASE 3 - NOW OPEN

GIDEON

**Space**      **SF**

GD1            10,079 (divisible)

---



# WHY MILPITAS?

With the addition of the new Milpitas BART Station and multiple new mixed-use development projects, Milpitas aims to be the center of the next generation of creative youth.

#1

FASTEST GROWING CITY IN SILICON VALLEY

#2

FASTEST GROWING CITY IN CA

#8

FASTEST GROWING CITY IN THE US

#29

BEST SMALL CITY TO LIVE IN THE US

±78K

TOTAL POPULATION

120K

DAYTIME POPULATION

37

MEDIAN AGE

16%

POPULATION GROWTH OVER 5 YRS

±41K

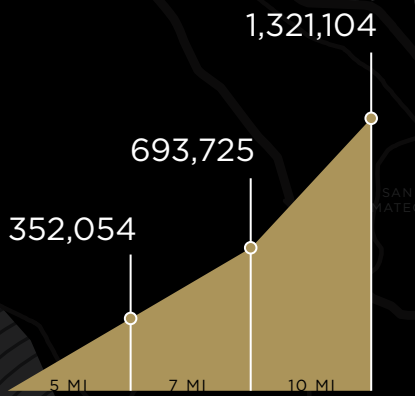
WORKING PROFESSIONALS

SOURCES: MILPITAS OFFICE OF ECONOMIC



# DEMOGRAPHICS

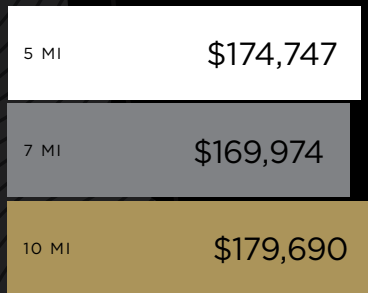
## POPULATION



## EMPLOYEES



## HOUSEHOLD INCOME



## DAYTIME POPULATION



## HOUSEHOLDS



DATA SOURCE: ESRI





# THE FIELDS

1315 MCCANDLESS DRIVE | MILPITAS, CA

**FOR LEASING INFORMATION, CONTACT**

TANNER LAVERTY  
Lavery Chacón  
408.622.4490  
tanner@lavertychacon.com  
CA DRE Officer #1436559



**Lavery Chacón**

Commercial Real Estate

This information supplied herein is from sources we deem reliable. It is provided without any representation, warranty, or guarantee, expressed or implied as to its accuracy. Prospective Buyer or Tenant should conduct an independent investigation and verification of all matters deemed to be material, including, but not limited to, statements of income and expenses. Consult your attorney, accountant, or other professional advisor.