

5 GRAND CENTRAL EAST

PARTIAL FLOOR 7 13,742 SF



BUILDING EXTERIOR



LOBBY

AVAILABILITY

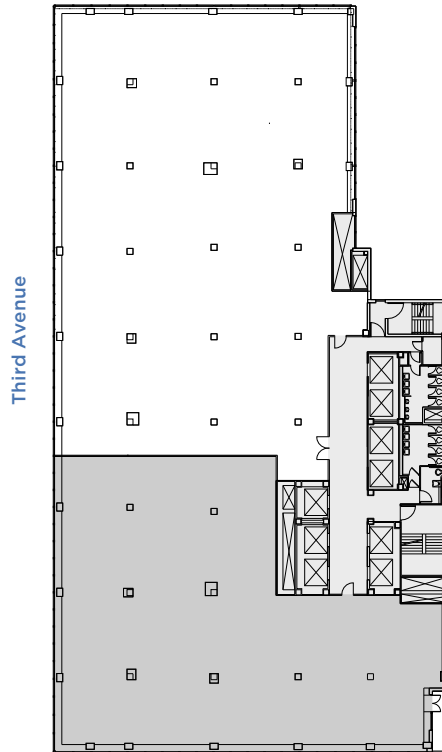
- Built Space
- Available Now

PROPERTY FEATURES

- One block from Grand Central Terminal
- Superb location at the southeast corner of 42nd Street and Third Avenue
- Bright interiors with large continuous windows
- Green roofs and exclusive outdoor terraces
- LEED Gold certification under LEED v4 Existing Buildings: Operations + Maintenance

CORE & SHELL PLAN

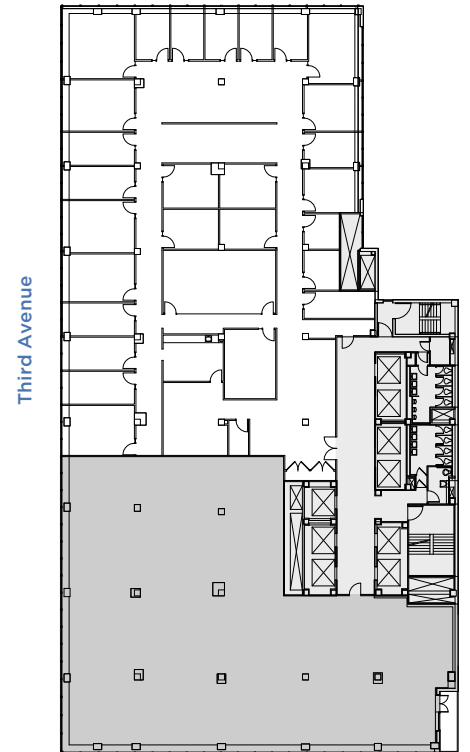
East 42nd Street



East 41st Street

AS-BUILT PLAN

East 42nd Street



East 41st Street



LEASING CONTACTS

Ashlea Aaron
212.257.6590
AAaron@durst.org

Bailey Caliban
212.257.6535
BCaliban@durst.org

Sayo Kamara
212.789.1761
SKamara@durst.org