

FOR LEASE

# EVERGLADES PROFESSIONAL OFFICES

3765 - 3785 AIRPORT-PULLING RD N, NAPLES, FL 34105



**John Paulich IV**  
Senior Advisor  
239.334.3040 x 212  
John.Paulich@TrinityCRE.com

**Doug Olson**  
Partner

**Matt Fredrickson**  
Partner

**Gianna Grigaliunas**  
Associate

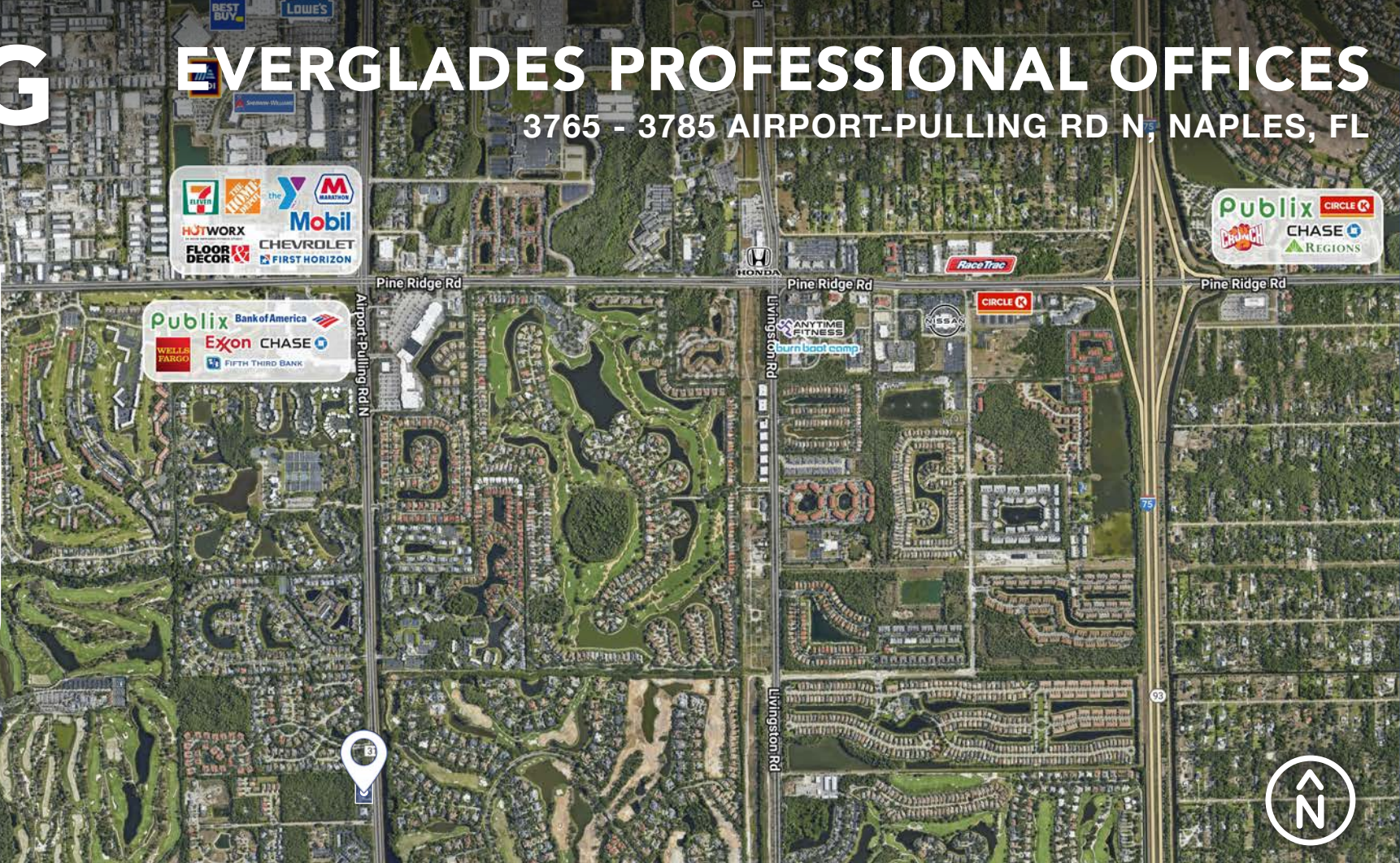
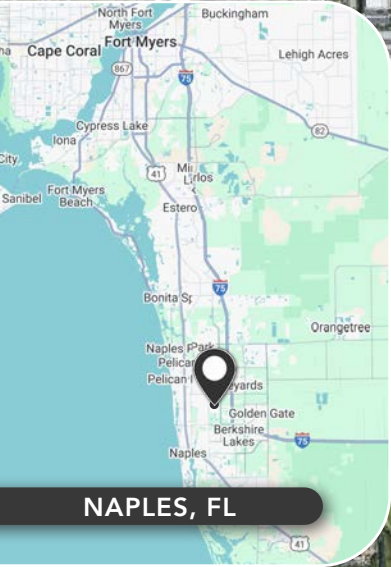


TrinityCRE.com



# EVERGLADES PROFESSIONAL OFFICES

3765 - 3785 AIRPORT-PULLING RD N, NAPLES, FL



## 2025 DEMOGRAPHICS

3765 AIRPORT-PULLING RD



**AVERAGE H.H INCOME**

1 MILE

\$203,451

3 MILE

\$206,895

5 MILE

\$175,995



**POPULATION**

4,594

50,839

147,606



**EMPLOYMENT DENSITY**

1,708

51,227

105,752

## PROPERTY DETAILS

**PRICE**

Call for Details

**AVAILABLE**

Unit C: 3,785± SF  
Unit 100: 3,765± SF

**ZONING**

Commercial

**LOCATION**

This subject site is located on the west side of Airport-Pulling Rd just north of Bailey Ln in Naples, FL



TrinityCRE.com

© Trinity Commercial Group

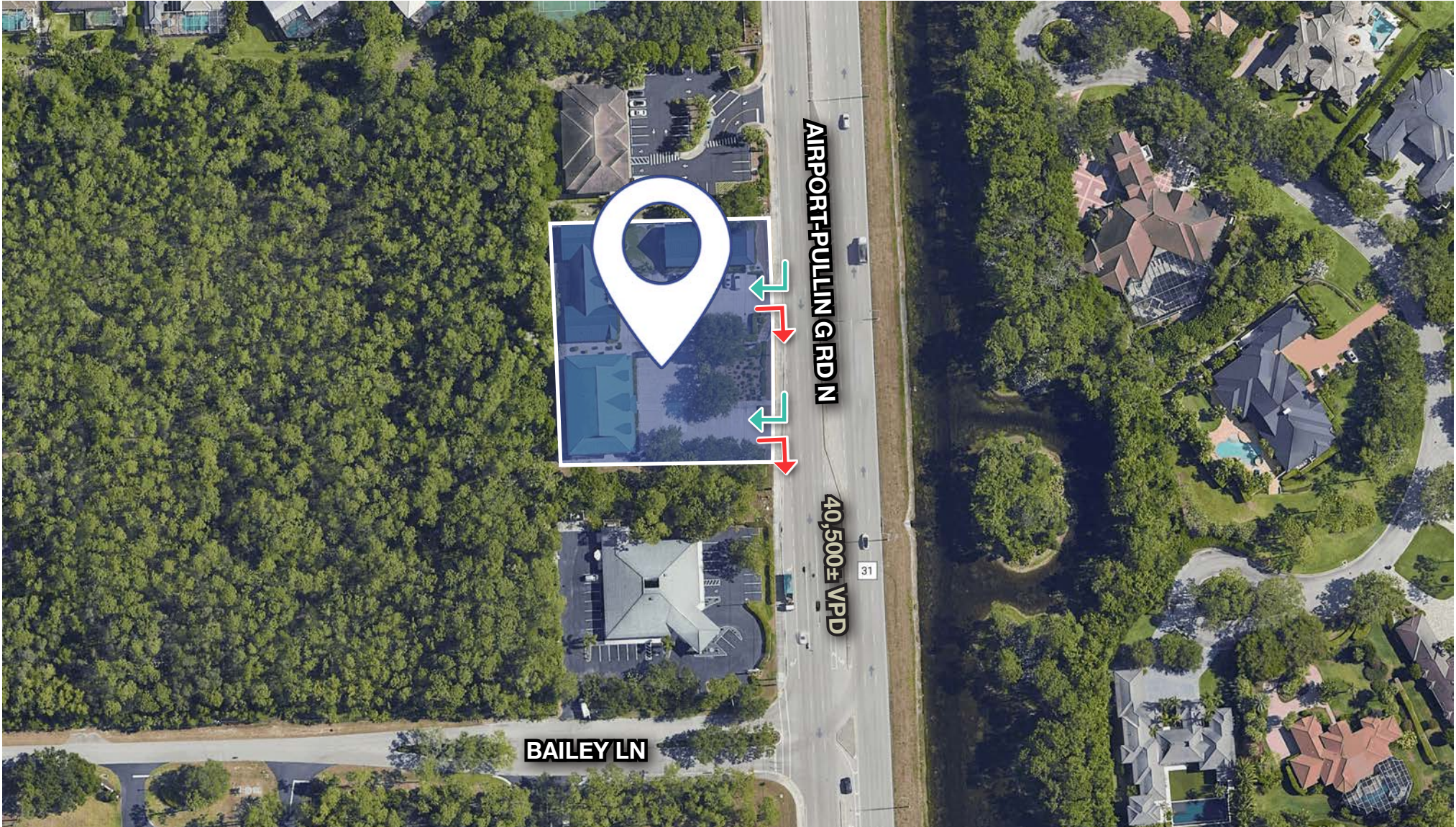
*This information is considered accurate, but not guaranteed.*

**Experts in the Market  
Partners in Your Success**



# EVERGLADES PROFESSIONAL OFFICES

3765 - 3785 AIRPORT-PULLING RD N, NAPLES, FL



**John Paulich IV**  
Senior Advisor  
239.334.3040 x 212  
John.Paulich@TrinityCRE.com

**Doug Olson**  
Partner

**Matt Fredrickson**  
Partner

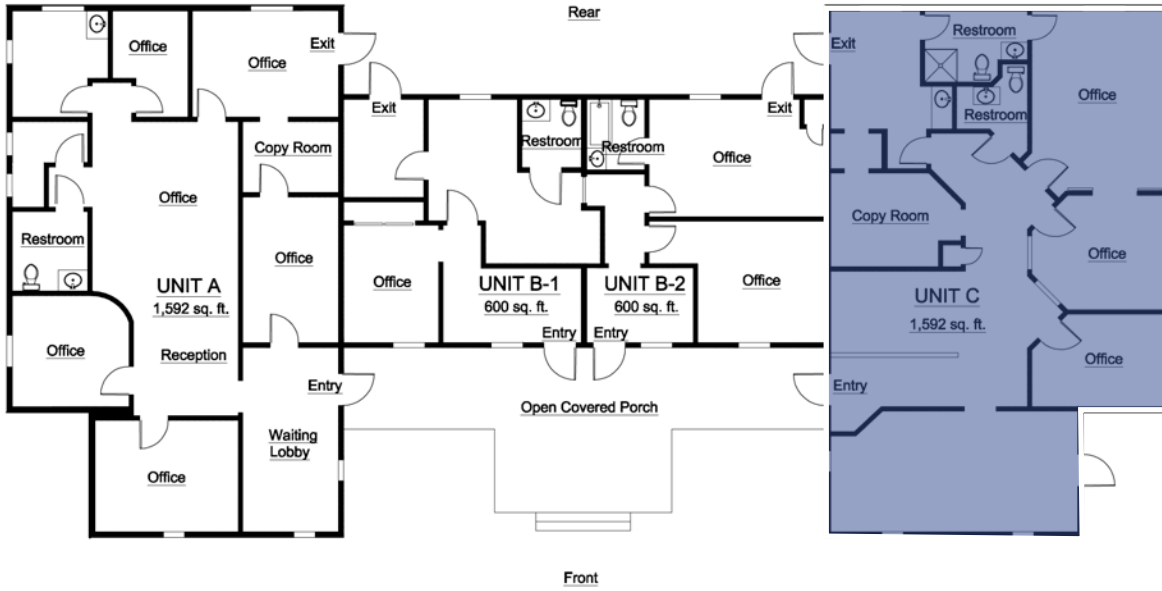
**Gianna Grigaliunas**  
Associate



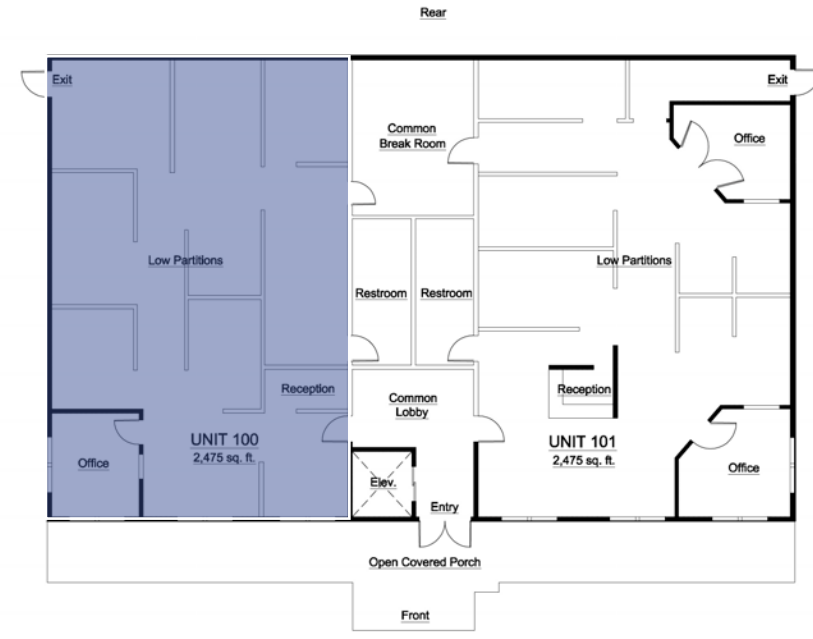
TrinityCRE.com

# EVERGLADES PROFESSIONAL OFFICES

3765 - 3785 AIRPORT-PULLING RD N, NAPLES, FL



**UNIT C**



**UNIT 100**



**John Paulich IV**  
Senior Advisor  
239.334.3040 x 212  
John.Paulich@TrinityCRE.com

**Doug Olson**  
Partner

**Matt Fredrickson**  
Partner

**Gianna Grigaliunas**  
Associate



TrinityCRE.com