

ONE DUPONT

1 Dupont Circle, NW
Washington, DC 20036

Office For Lease

1,567 - 21,016 SF



Leasing Information:
202.513.6700

Lincoln

Adam Biberaj
202.513.6736
abiberaj@lpc.com

Merrill Turnbull
202.513.6713
mturnbull@lpc.com

Tim Whitebread
202.513.6712
twhitebread@lpc.com

McKay Elliott
202.513.6724
melliott@lpc.com

Lincoln Property Company
101 Constitution Avenue, NW Suite 325 East
Washington, DC 20001

www.lpc.com

ONE DUPONT

Office For Lease

1 Dupont Circle, NW | Washington, DC 20036



Property Highlights

- Tax breaks incentives for educated and non-profit uses
- Four sides of glass
- 150 person conference center and training rooms
- On-site restaurant and fitness center
- Direct access to Dupont Metro station

Availabilities	SF	Lease Rate	Date Available
Lower Level	13,864 SF	Negotiable	10/2025
Suite 220	3,321 SF	Negotiable	Available Immediately
Suite 405	3,306 SF	\$46.00 FS	Available Immediately
Suite 415	1,567 SF	Negotiable	Coming Soon
5th Floor	4,000 - 21,016 SF	\$47.00 FS	Available Immediately
Suite 615	4,002 SF	\$46.00 FS	Available Immediately



Adam Biberaj

202.513.6736
abiberaj@lpc.com

Merrill Turnbull

202.513.6713
mturnbull@lpc.com

Tim Whitebread

202.513.6712
twhitebread@lpc.com

McKay Elliott

202.513.6724
melliott@lpc.com

Lincoln



Suite	Size	Lease Rate	Description
■ Suite 615	4,002 SF	\$46.00 FS	Hypothetical Layout Available Immediately

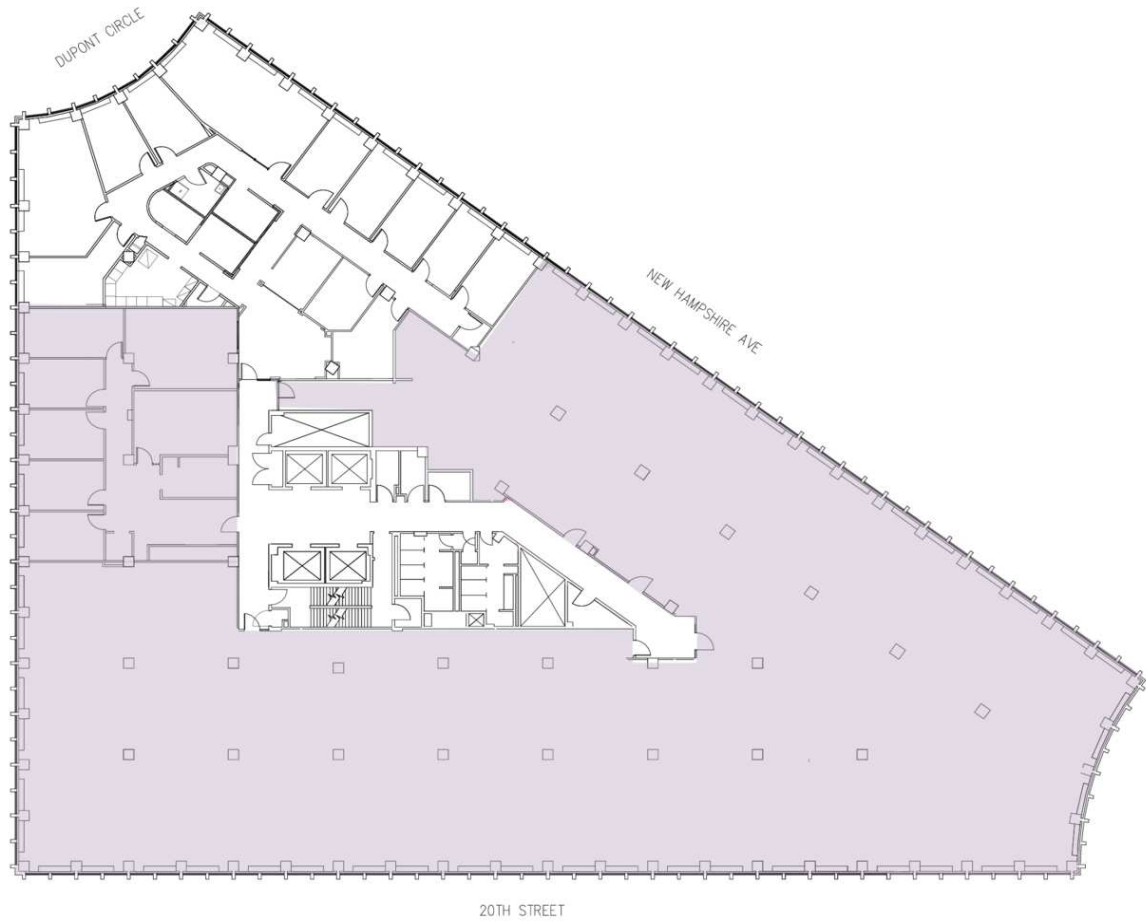
Adam Biberaj 202.513.6736 abiberaj@lpc.com	Merrill Turnbull 202.513.6713 mturnbull@lpc.com	Tim Whitebread 202.513.6712 twhitebread@lpc.com	McKay Elliott 202.513.6724 melliott@lpc.com
---	--	--	--

Lincoln

ONE DUPONT

5th Floor

1 Dupont Circle, NW | Washington, DC 20036



Suite	Size	Description
■ 5th Floor	4,000 - 21,016 SF	Available Immediately

Adam Biberaj
202.513.6736
abiberaj@lpc.com

Merrill Turnbull
202.513.6713
mturnbull@lpc.com

Tim Whitebread
202.513.6712
twhitebread@lpc.com

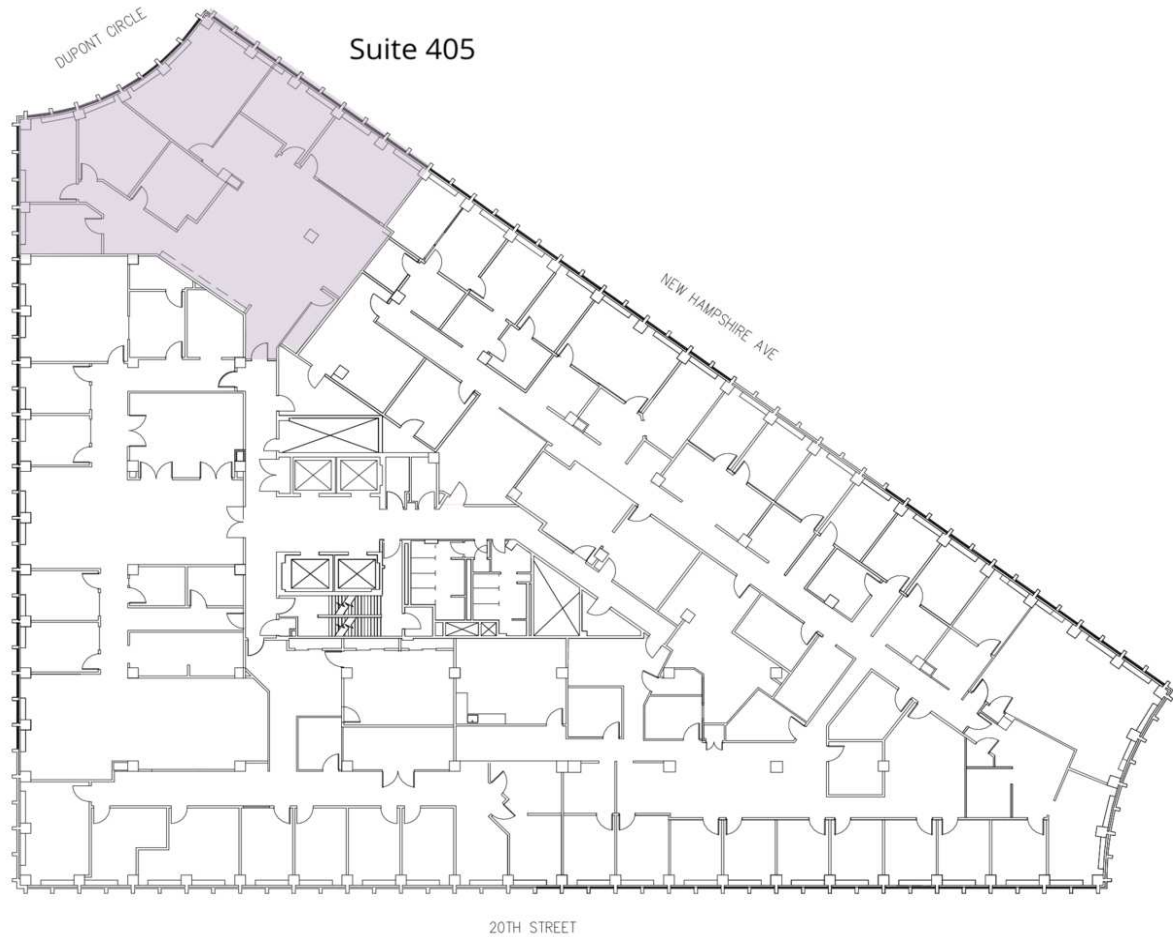
McKay Elliott
202.513.6724
melliott@lpc.com

Lincoln

ONE DUPONT

Suite 405

1 Dupont Circle, NW | Washington, DC 20036



Suite	Size	Description
■ Suite 405	3,306 SF	Available Immediately

Adam Biberaj
202.513.6736
abiberaj@lpc.com

Merrill Turnbull
202.513.6713
mturnbull@lpc.com

Tim Whitebread
202.513.6712
twhitebread@lpc.com

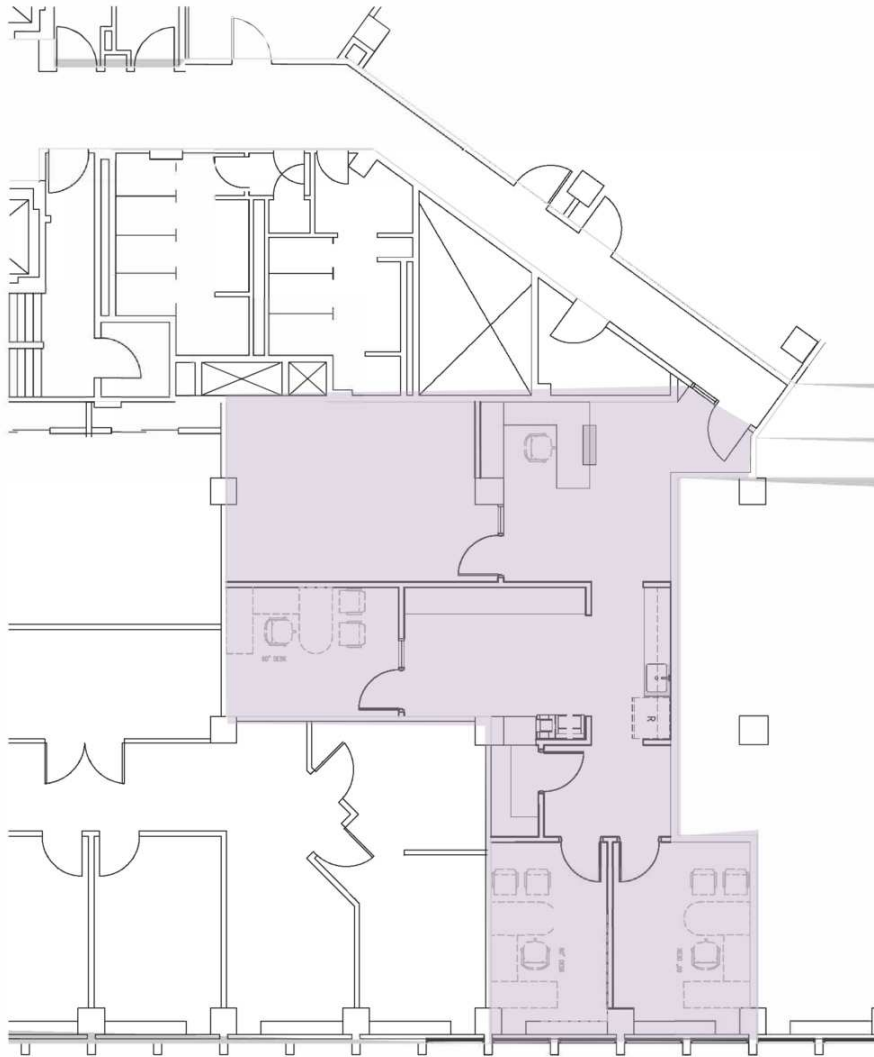
McKay Elliott
202.513.6724
melliott@lpc.com

Lincoln

ONE DUPONT

Suite 415

1 Dupont Circle, NW | Washington, DC 20036



20th Street

Suite	Size	Description
■ Suite 415	1,567 SF	Future Spec Suite

Adam Biberaj
202.513.6736
abiberaj@lpc.com

Merrill Turnbull
202.513.6713
mturnbull@lpc.com

Tim Whitebread
202.513.6712
twhitebread@lpc.com

McKay Elliott
202.513.6724
melliott@lpc.com

Lincoln

ONE DUPONT

Suite 220

1 Dupont Circle, NW | Washington, DC 20036



Suite	Size	Lease Rate	Description
■ Suite 220	3,321 SF	Negotiable	Available Immediately

Adam Biberaj
202.513.6736
abiberaj@lpc.com

Merrill Turnbull
202.513.6713
mturnbull@lpc.com

Tim Whitebread
202.513.6712
twhitebread@lpc.com

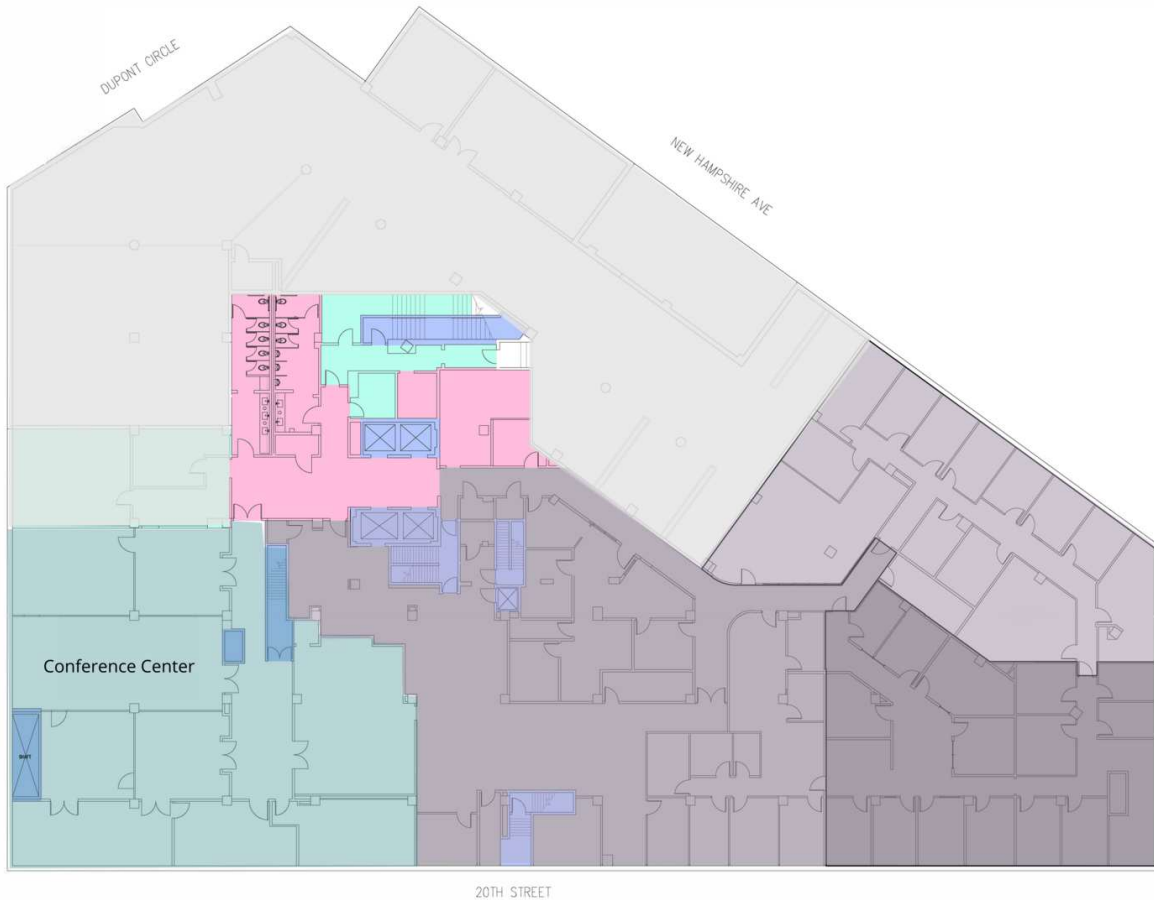
McKay Elliott
202.513.6724
melliott@lpc.com

Lincoln

ONE DUPONT

Lower Level

1 Dupont Circle, NW | Washington, DC 20036



Suite	Size	Lease Rate	Description
■ Lower Level	13,864 SF	Negotiable	Available 10/1/2025

Adam Biberaj
202.513.6736
abiberaj@lpc.com

Merrill Turnbull
202.513.6713
mturnbull@lpc.com

Tim Whitebread
202.513.6712
twhitebread@lpc.com

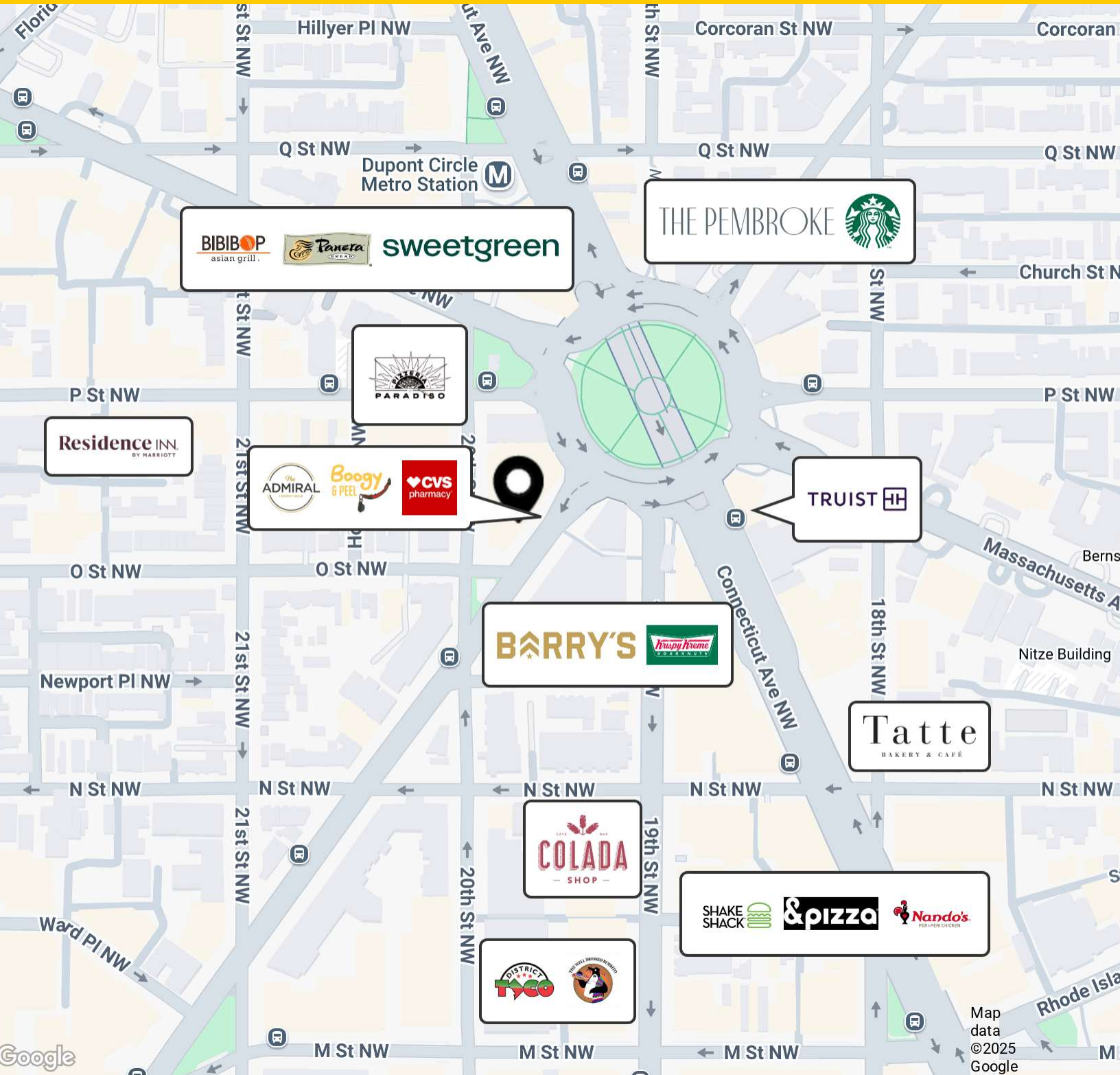
McKay Elliott
202.513.6724
melliott@lpc.com

Lincoln

ONE DUPONT

Dupont Amenities

1 Dupont Circle, NW | Washington, DC 20036



Adam Biberaj
202.513.6736
abiberaj@lpc.com

Merrill Turnbull
202.513.6713
mturnbull@lpc.com

Tim Whitebread
202.513.6712
twhitebread@lpc.com

McKay Elliott
202.513.6724
melliott@lpc.com

Lincoln

ONE DUPONT

Additional Photos

1 Dupont Circle, NW | Washington, DC 20036



Adam Biberaj
202.513.6736
abiberaj@lpc.com

Merrill Turnbull
202.513.6713
mturnbull@lpc.com

Tim Whitebread
202.513.6712
twhitebread@lpc.com

McKay Elliott
202.513.6724
melliott@lpc.com

Lincoln



ONE DUPONT

1 Dupont Circle, NW
Washington, DC 20036

Leasing Information:
202.513.6700

Adam Biberaj
202.513.6736
abiberaj@lpc.com

Merrill Turnbull
202.513.6713
mturnbull@lpc.com

Tim Whitebread
202.513.6712
twhitebread@lpc.com

McKay Elliott
202.513.6724
melliott@lpc.com

Lincoln

Lincoln Property Company
101 Constitution Avenue, NW Suite 325 East
Washington, DC 20001

www.lpc.com