

Radley House, Richardshaw Road, Pudsey, LS28 6LE

Serviced office spaces TO LET

- Common Areas
- Major Transport Links
- City/Town Centre
- Meeting Rooms

Summary

Available Size	54 to 108 sq ft
Rent	£30.89 per sq ft
Business Rates	Upon Enquiry
EPC Rating	C

Description

Impress your clients with a warm welcome from our friendly, professional reception team. Take a permanent space or enjoy the flexibility of whatever space you need, whenever you need it. Collaborate with like-minded business people in comfortable, modern coworking spaces. Pitch your ideas with state-of-the-art presentation equipment in a choice of fully equipped meeting rooms. Share them with remote guests using the latest video conferencing technology. Recharge your batteries with a barista-brewed coffee from our well stocked kitchens.

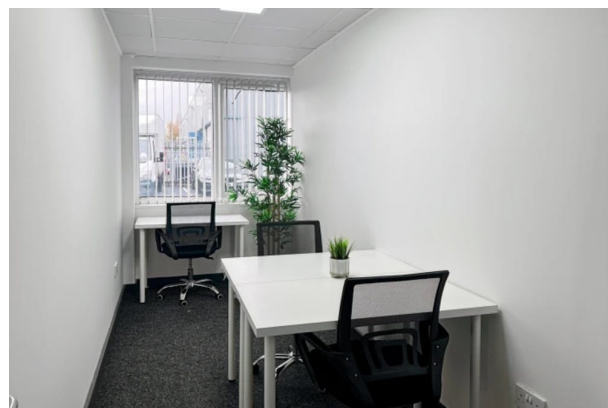
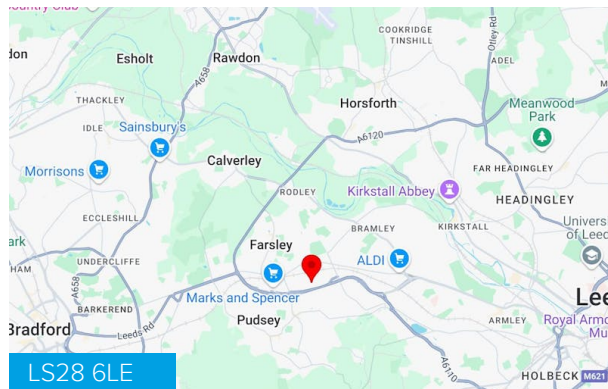
Finish the day with a stroll across Stanningley Park, a round at Goffs Park Golf Club, or a night out in Leeds's vibrant city centre.

Location

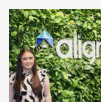
Radley House is located just off the A647 which offers access into the City Centre of Leeds. Transport links are excellent with Richardshaw Road bus stop (9C, 16, 16A and 91) just 0.2 miles away along Richardshaw Lane. Access to New Pudsey Train Station is 1.4-miles away, providing access in and around the city with bars and restaurants within walking distance.

The M621 is 3.5 miles away which connects to the M1 North and South which provides wider linkages to larger cities such as Newcastle, Manchester and London.

Leeds Bradford Airport is 7.6 miles North of the city.



Viewing & Further Information



Caitlin Parker

01609 797 330

caitlin.parker@alignpropertypartners.co.uk

View Properties Here
www.alignpropertypartners.co.uk

