

**READY FOR OCCUPANCY**



**6965**

Market Place Dr

Orlando, Florida 32822

Owner/developer

**DRG**  
DISTRIBUTION  
REALTY GROUP

Leasing agent

**JLL**

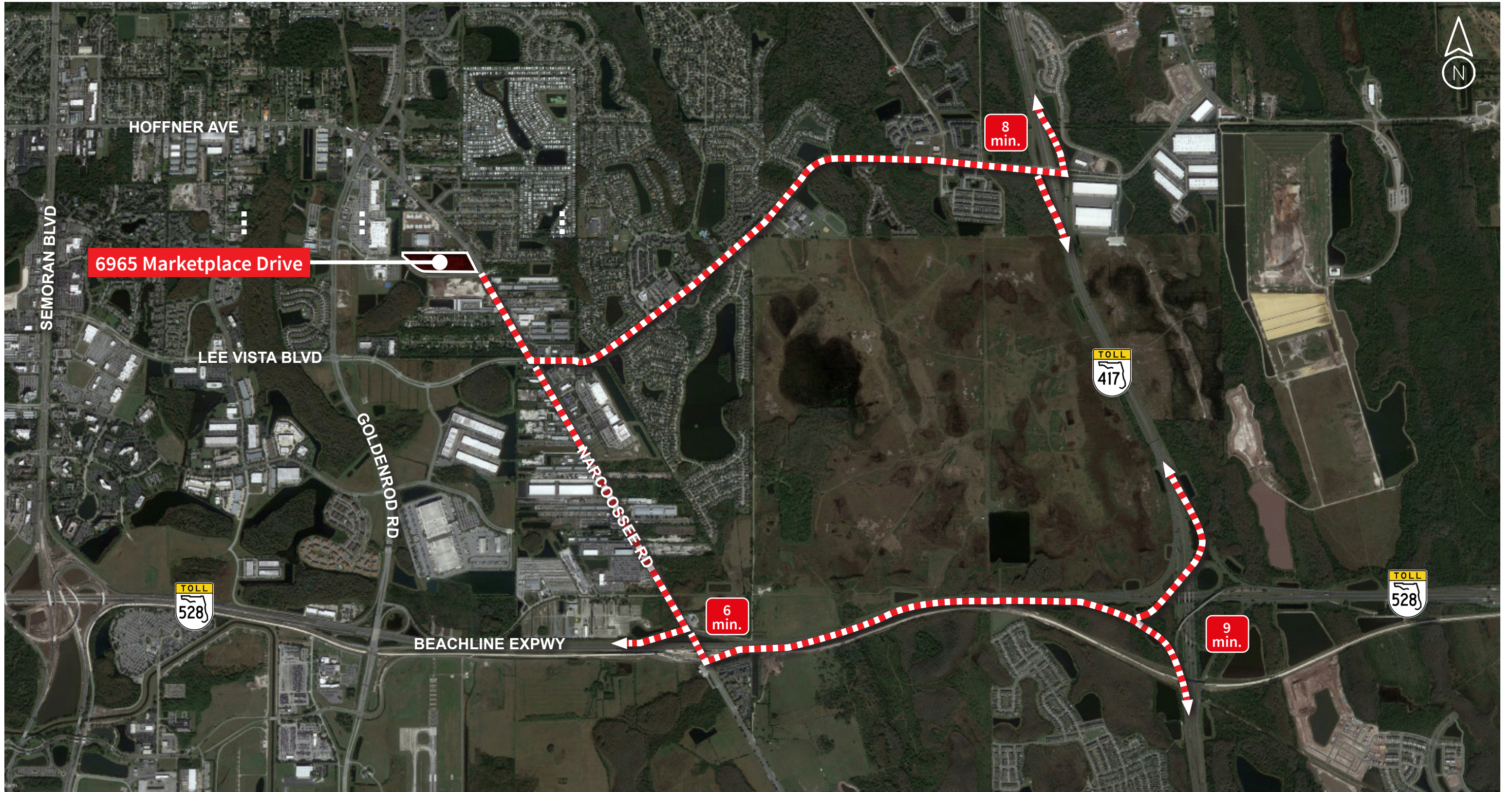
**136,052 RSF available**



Project photos



528 and 417 access

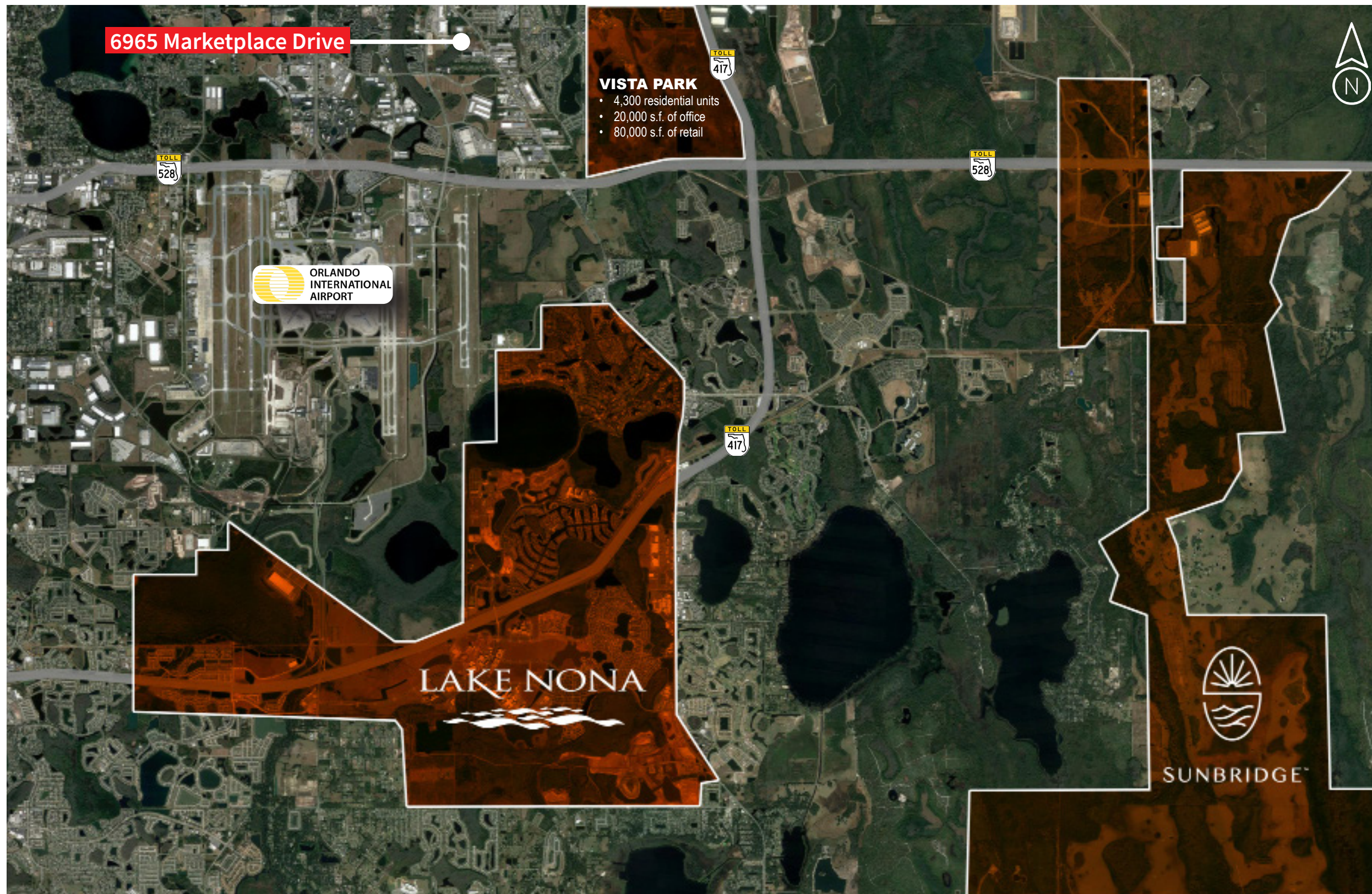


Area amenities



 Hotel (3,900± rooms)

# Lake Nona



## Residential growth

### Lake Nona ([link to website](#))

Lake Nona is the fastest growing community in Orlando with eleven neighborhoods, which includes single family homes, townhomes and multi-family apartments. It is also home to Nemours Children's Hospital, UF Research and Academic Center, UCF College of Medicine, and the Orlando VA Medical Center. It is the first and only community in the United States to be designated a Cisco Iconic Smart + Connected Community.

### Sunbridge ([link to website](#))

Coming to life on ~27,000 acres in Central Florida between metro Orlando and the Space Coast, Sunbridge is a regional-scale, multi-decade initiative in the early stages of planning and development. Upon completion, the project will be comprised of:

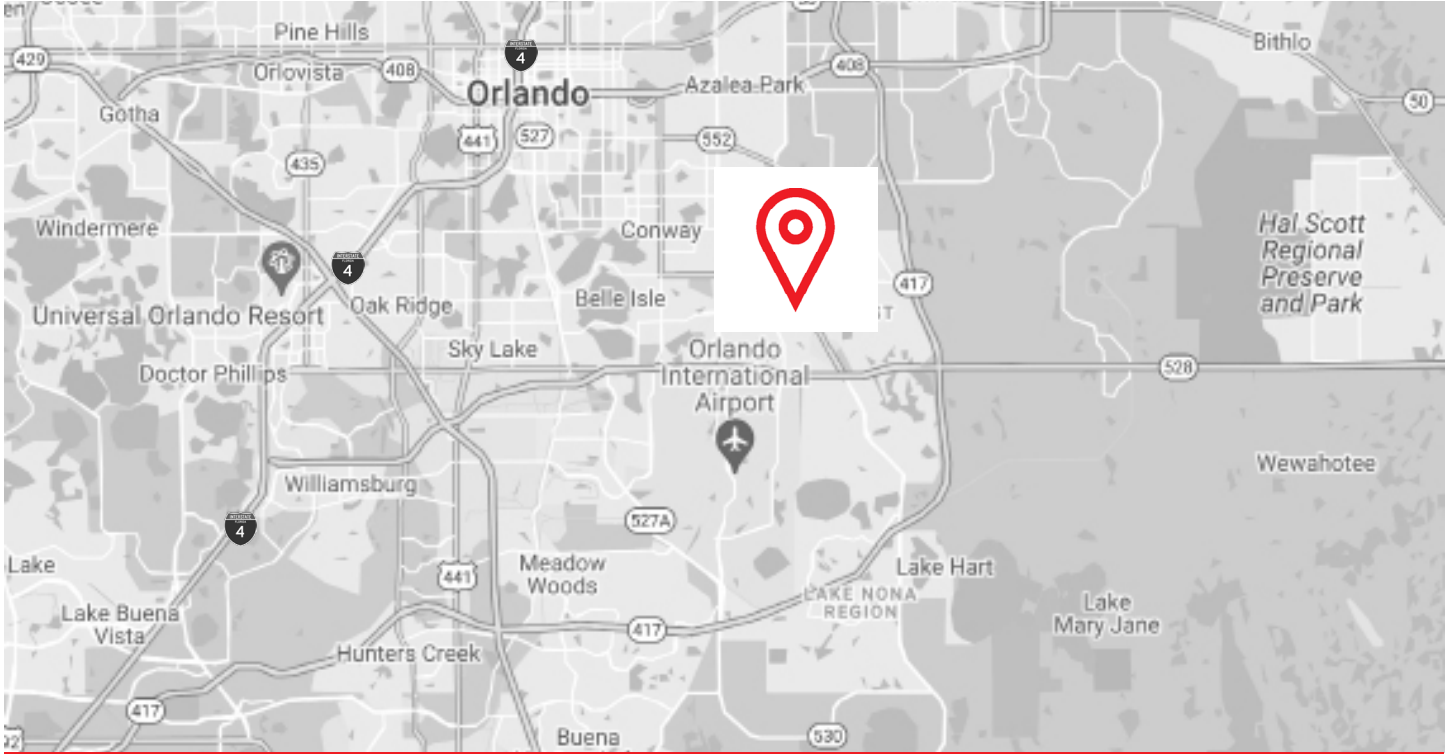
#### Orange County

- 5,720 single-family homes
- 1,650 multi-family units
- 490 hotel rooms
- 5,470,000 s.f. of office
- 2,900,000 s.f. of industrial
- 880,000 s.f. of retail

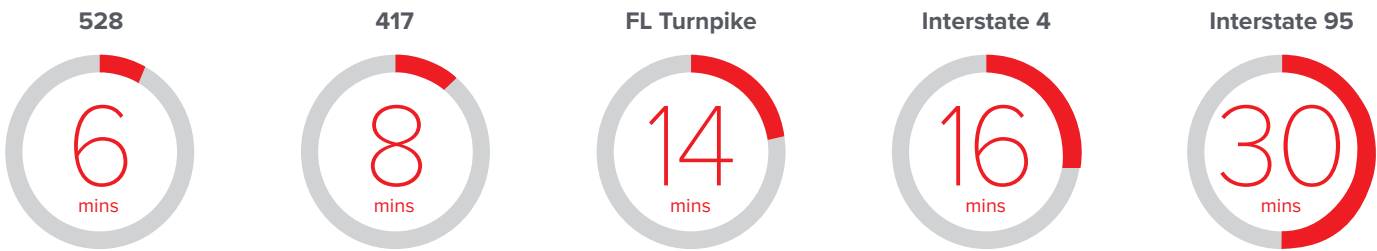
#### Osceola County

- 16,980 single-family homes
- 12,340 multi-family homes
- 5,000 hotel rooms
- 5,720,000 s.f. of office
- 1,820,000 s.f. of commercial
- 1,000,000 s.f. of industrial






Source: Tavistock Development Co.



## Traffic scores



## Demographics

					
Drive Time	Total Pop	Households	Avg HH Income	Businesses	Employees
60 minutes	3,575,012	1,341,801	\$111,438	138,851	1,419,755
120 minutes	9,408,727	3,753,175	\$104,588	351,671	3,570,435
240 minutes	21,631,446	8,702,265	\$111,125	941,804	8,687,851

For more information, please contact:

**Bobby Isola, SIOR, CCIM**

Executive Managing Director  
 +1 407 930 1804  
[bobby.isola@jll.com](mailto:bobby.isola@jll.com)

**Cameron Montgomery**

Executive Vice President  
 +1 407 982 8650  
[cameron.montgomery@jll.com](mailto:cameron.montgomery@jll.com)

Jones Lang LaSalle Brokerage, Inc., a licensed real estate broker across the US | 250 South Orange Avenue, Suite 700P, Orlando, Florida 32801

Although information has been obtained from sources deemed reliable, JLL does not make any guarantees, warranties or representations, express or implied, as to the completeness or accuracy as to the information contained herein. Any projections, opinions, assumptions or estimates used are for example only. There may be differences between projected and actual results, and those differences may be material. JLL does not accept any liability for any loss or damage suffered by any party resulting from reliance on this information. If the recipient of this information has signed a confidentiality agreement with JLL regarding this matter, this information is subject to the terms of that agreement. ©2025. Jones Lang LaSalle Brokerage, Inc. All rights reserved.